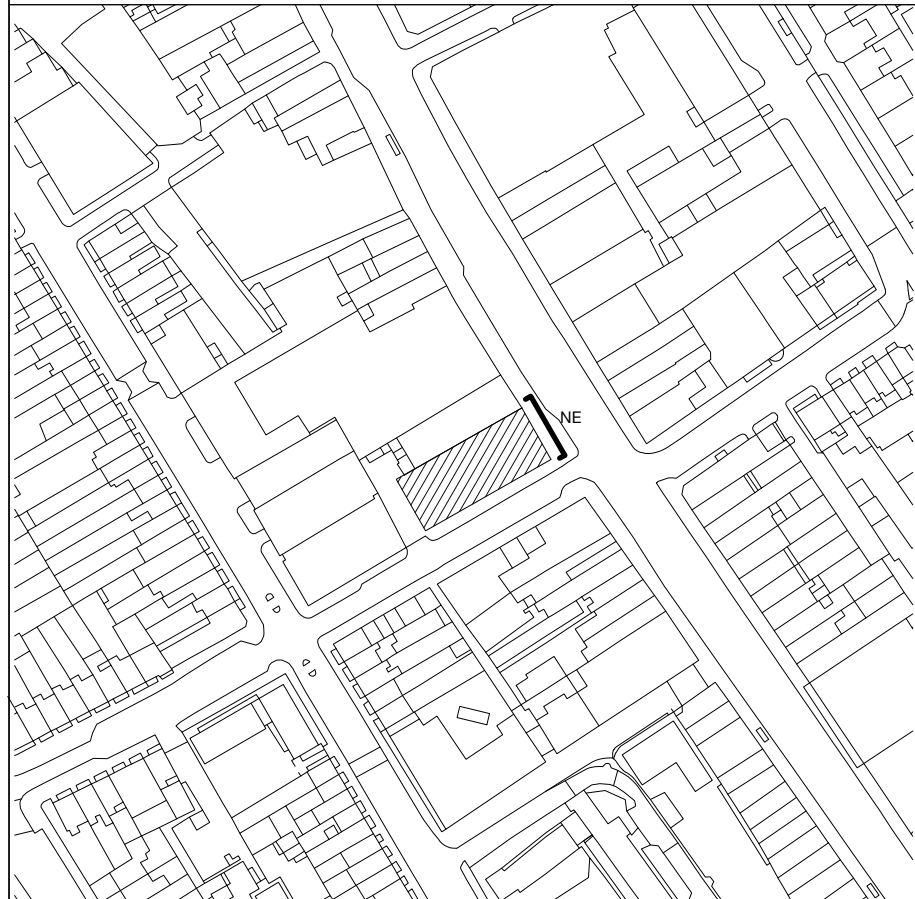
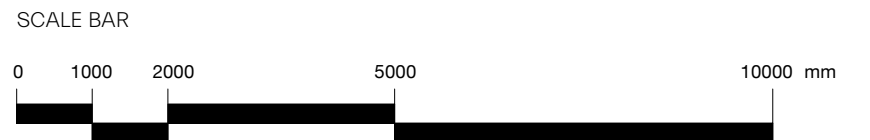




- KEY LEGEND
- 1 Stretcher bond Brickwork
 - 2 Brick Window Sill
 - 3 Fixed PPC aluminium windows
 - 4 Operable PPC aluminium windows with transom and fixed bottom panel
 - 5 Spandrel panel with perforated aluminium 'zig-zag' shaped corrugated panel coordinated with brick dimensions.
* Intake / exhaust for MVHR carried through it.
 - 6 Louvered doors with perforated aluminium 'zig-zag' shaped corrugated perforated panel
 - 7 Chamfered brick reveal with stepped brick detailing
 - 8 Chamfered brick reveal
 - 9 Stepped brick detail in setbacks
 - 10 Coloured reconstituted stone parapet detail, colour matched to brick
 - 11 Coloured reconstituted stone cladding with protruding concrete coping detail, colour matched to brick
 - 12 Coloured reconstituted stone cladding with ribbed texture, colour matched to brick
 - 13 Metal balustrade to residential balconies
 - 14 Roof plant
 - 15 New gate to Sign Makers Yard
 - 16 Signage area
 - 17 Boiler flue

revision	date	amendment
-	07.06.2019	PLANNING ISSUE



MORRIS+COMPANY

Unit 7, 16-24 Underwood Street, London N1 7JQ
Tel: +44 (0)20 7566 7440 Fax: +44 (0)20 7014 3119
www.morrisandcompany.com

- Do not scale from this drawing
- All dimensions to be checked on site by the Contractor
- And such dimensions to be their responsibility
- Report all drawing errors and omissions to the Architect
- All dimensions in millimeters unless noted otherwise
- If in doubt ask Contract Administrator

Job title

115-119 Camden High Street

drawing title / location

Proposed East Elevation

status	Planning						
date	07/06/19						
scale	1:100 @ A1				1:200 @ A3		
project	originator	zone	level	type	role	number	status - revision
A277	MCO	XX	ZZ	DR	A	01210	P01