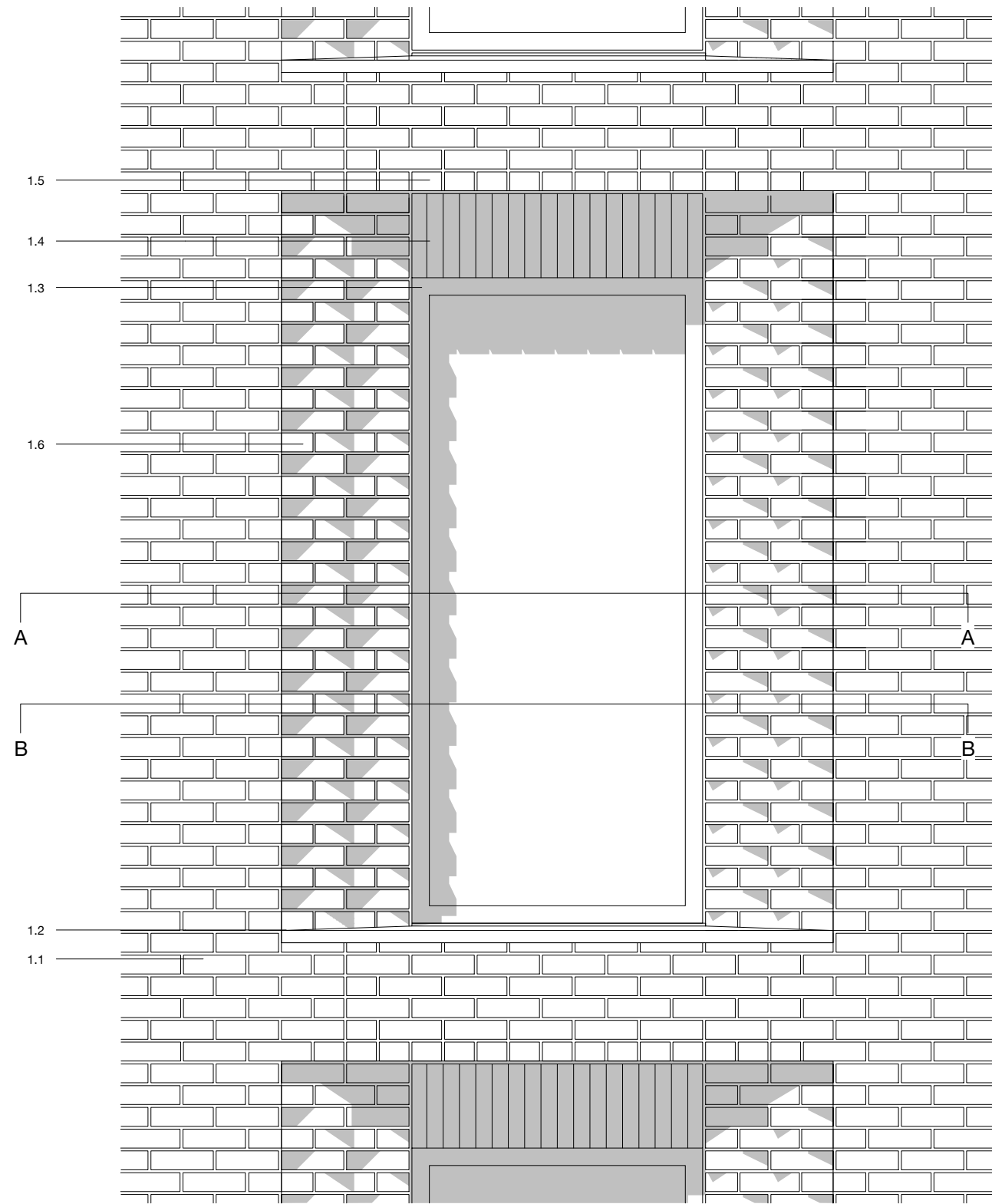
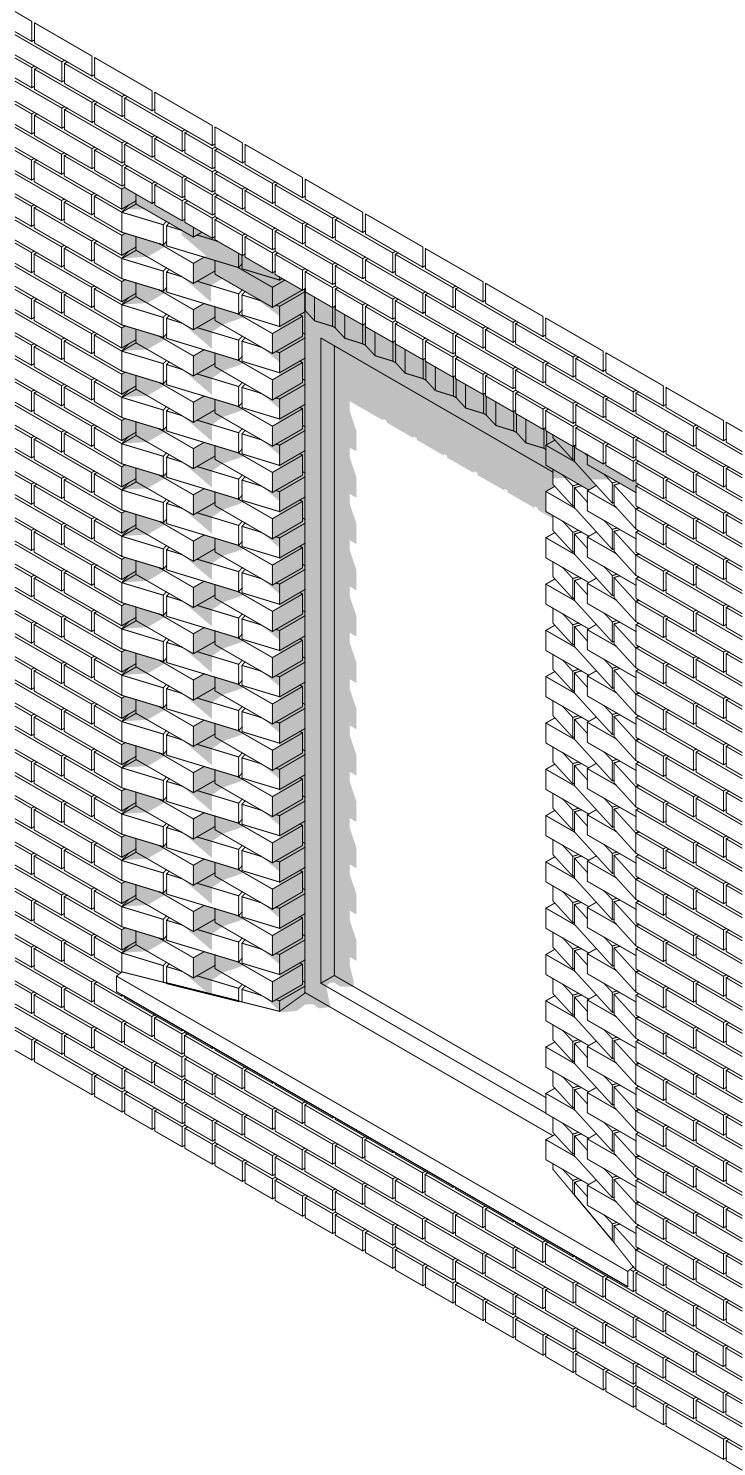


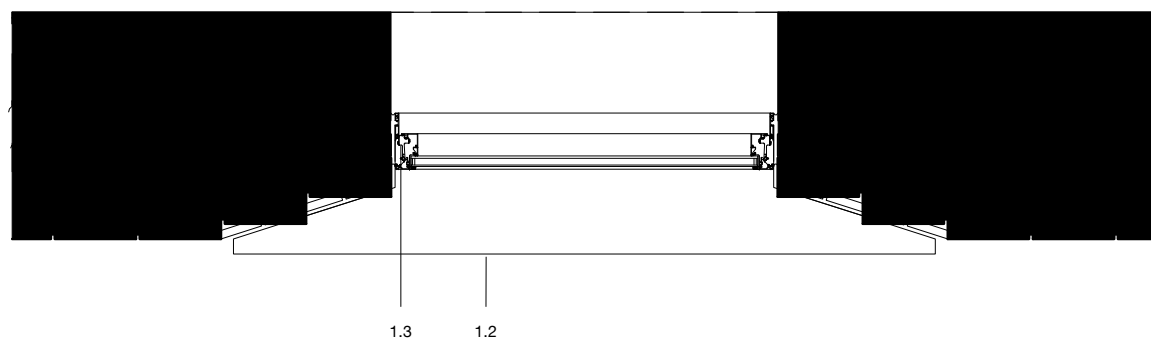
1 SECTION THROUGH WINDOW
31101 1:20



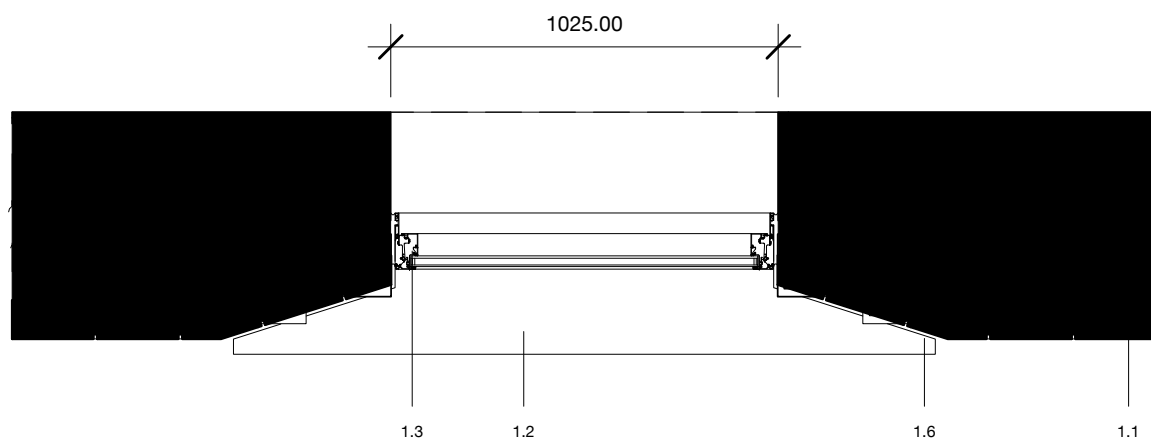
2 WINDOW ELEVATION
31101 1:20



3 WINDOW AXONOMETRIC VIEW
31101 1:20



4 CUT A THROUGH WINDOW
31101 1:20



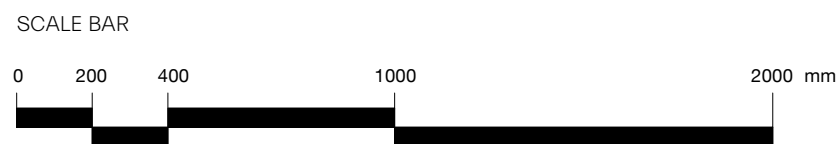
5 CUT B THROUGH WINDOW
31101 1:20



6 DELANCEY STREET DETAIL ELEVATION
31101

- KEY LEGEND
- 1.1 Stretcher bond brickwork
 - 1.2 Brick window sill
 - 1.3 PPC aluminium windows with fixed panel
 - 1.4 Spandrel panel with perforated aluminium corrugated panel coordinated with brick dimensions. Intake / exhaust for MVHR carried through it.
 - 1.5 Brick Faced Lintel
 - 1.6 Special brick to match chamfer's geometry

revision	date	amendment
-	07.06.2019	PLANNING ISSUE



MORRIS+COMPANY

Unit 7, 16-24 Underwood Street, London N1 7JQ
Tel: +44 (0)20 7566 7440 Fax: +44 (0)20 7014 3119
www.morrisandcompany

- Do not scale from this drawing
- All dimensions to be checked on site by the Contractor
- And such dimensions to be their responsibility
- Report all drawing errors and omissions to the Architect
- All dimensions in millimeters unless noted otherwise
- If in doubt ask Contract Administrator

job title

115-119 Camden High Street

drawing title / location

Typical Window - Type 1

status	Planning							
date	07/06/19							
scale	1:20 @ A1				1:20 @ A3			
project	originator	zone	level	type	role	number	status - revision	
A277	MCO	XX	XX	DR	A	31101	P01	