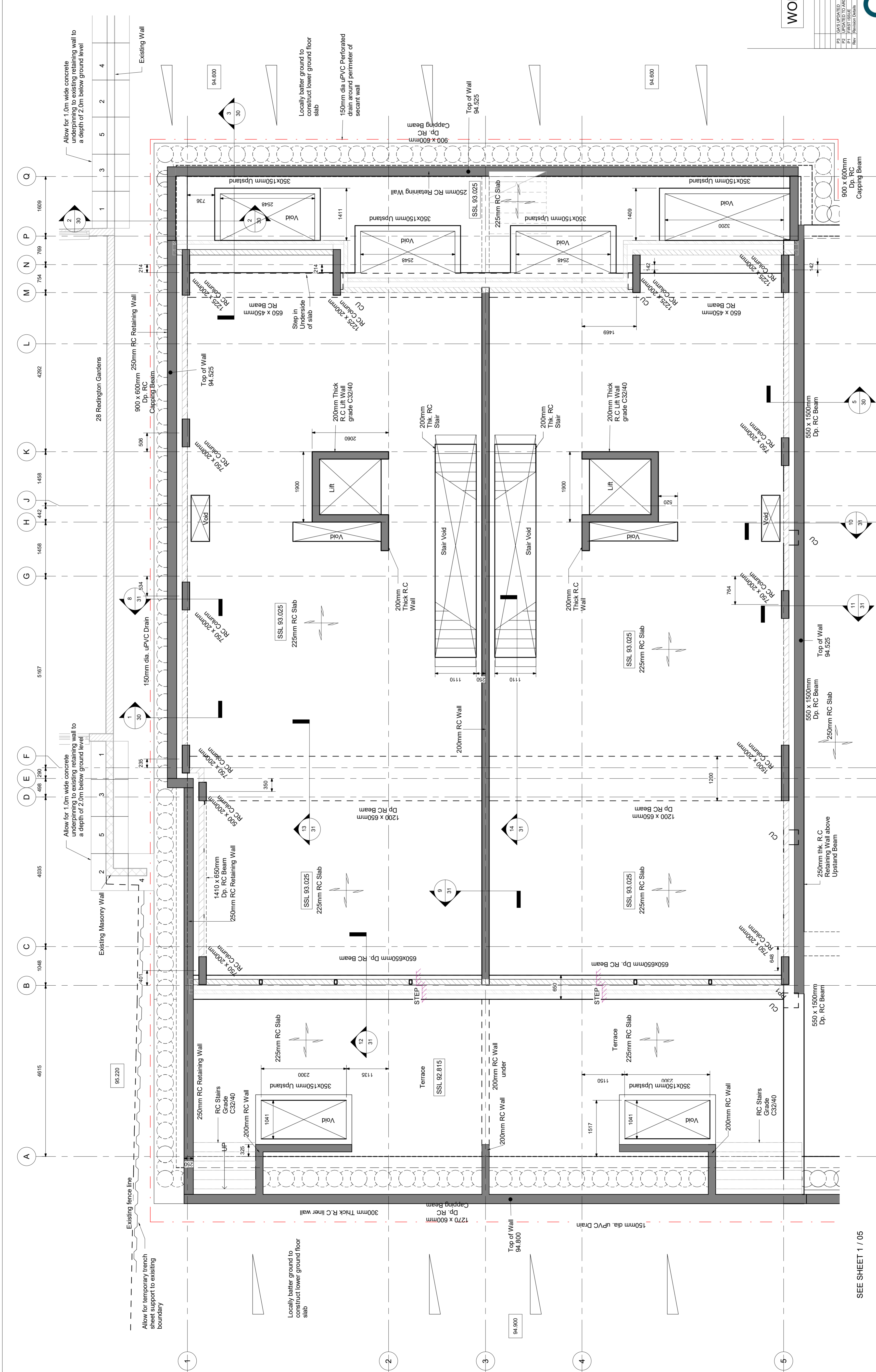


## Appendix A

### Proposed Structural Drawings and Sequence of Construction







**WORK IN PROGRESS**

Client	MY CONSTRUCTION
Architect	MY CONSTRUCTION
Project	25-26 REDINGTON GARDENS LONDON
Drawn By	AW/S
Checked By	KSC
Rev	Revision Details
P1	ISSUE
P2	ISSUE
P3	ISSUE
P4	ISSUE
P5	ISSUE
P6	ISSUE
P7	ISSUE
P8	ISSUE
P9	ISSUE
P10	ISSUE
P11	ISSUE
P12	ISSUE
P13	ISSUE
P14	ISSUE
P15	ISSUE
P16	ISSUE
P17	ISSUE
P18	ISSUE
P19	ISSUE
P20	ISSUE
P21	ISSUE
P22	ISSUE
P23	ISSUE
P24	ISSUE
P25	ISSUE
P26	ISSUE
P27	ISSUE
P28	ISSUE
P29	ISSUE
P30	ISSUE
P31	ISSUE
P32	ISSUE
P33	ISSUE
P34	ISSUE
P35	ISSUE
P36	ISSUE
P37	ISSUE
P38	ISSUE
P39	ISSUE
P40	ISSUE
P41	ISSUE
P42	ISSUE
P43	ISSUE
P44	ISSUE
P45	ISSUE
P46	ISSUE
P47	ISSUE
P48	ISSUE
P49	ISSUE
P50	ISSUE
P51	ISSUE
P52	ISSUE
P53	ISSUE
P54	ISSUE
P55	ISSUE
P56	ISSUE
P57	ISSUE
P58	ISSUE
P59	ISSUE
P60	ISSUE
P61	ISSUE
P62	ISSUE
P63	ISSUE
P64	ISSUE
P65	ISSUE
P66	ISSUE
P67	ISSUE
P68	ISSUE
P69	ISSUE
P70	ISSUE
P71	ISSUE
P72	ISSUE
P73	ISSUE
P74	ISSUE
P75	ISSUE
P76	ISSUE
P77	ISSUE
P78	ISSUE
P79	ISSUE
P80	ISSUE
P81	ISSUE
P82	ISSUE
P83	ISSUE
P84	ISSUE
P85	ISSUE
P86	ISSUE
P87	ISSUE
P88	ISSUE
P89	ISSUE
P90	ISSUE
P91	ISSUE
P92	ISSUE
P93	ISSUE
P94	ISSUE
P95	ISSUE
P96	ISSUE
P97	ISSUE
P98	ISSUE
P99	ISSUE
P100	ISSUE

MATERIAL SCHEDULE	
Material	Grade
Mass Concrete	C20/Gen 3
Reinforced Concrete	RC32/40
Structural Steel	S355
Common Brickwork	20.5N/mm <sup>2</sup>
(water absorption between 7% and 20%)	
Engineering Brick	50N/mm <sup>2</sup>
Timber	C24

LINTEL SCHEDULE		
Internal openings	Clear span length	Size
	900-2500	Wayner R3 concrete Linel
External Openings	900-1800	Cainic Ang -167
	1800-3000	Cainic Ang - 215

SEE SHEET 11 / 05  
Lower Ground Floor - SSL  
1:50

Date	09/20/18	Rev	P3
Drawing Scale	As indicated	Drawing Number	180709-GA- 04
Drawn By	AW/S	Checked By	KSC
Title	No. 25-26 PROPOSED LOWER GROUND LAYOUT		

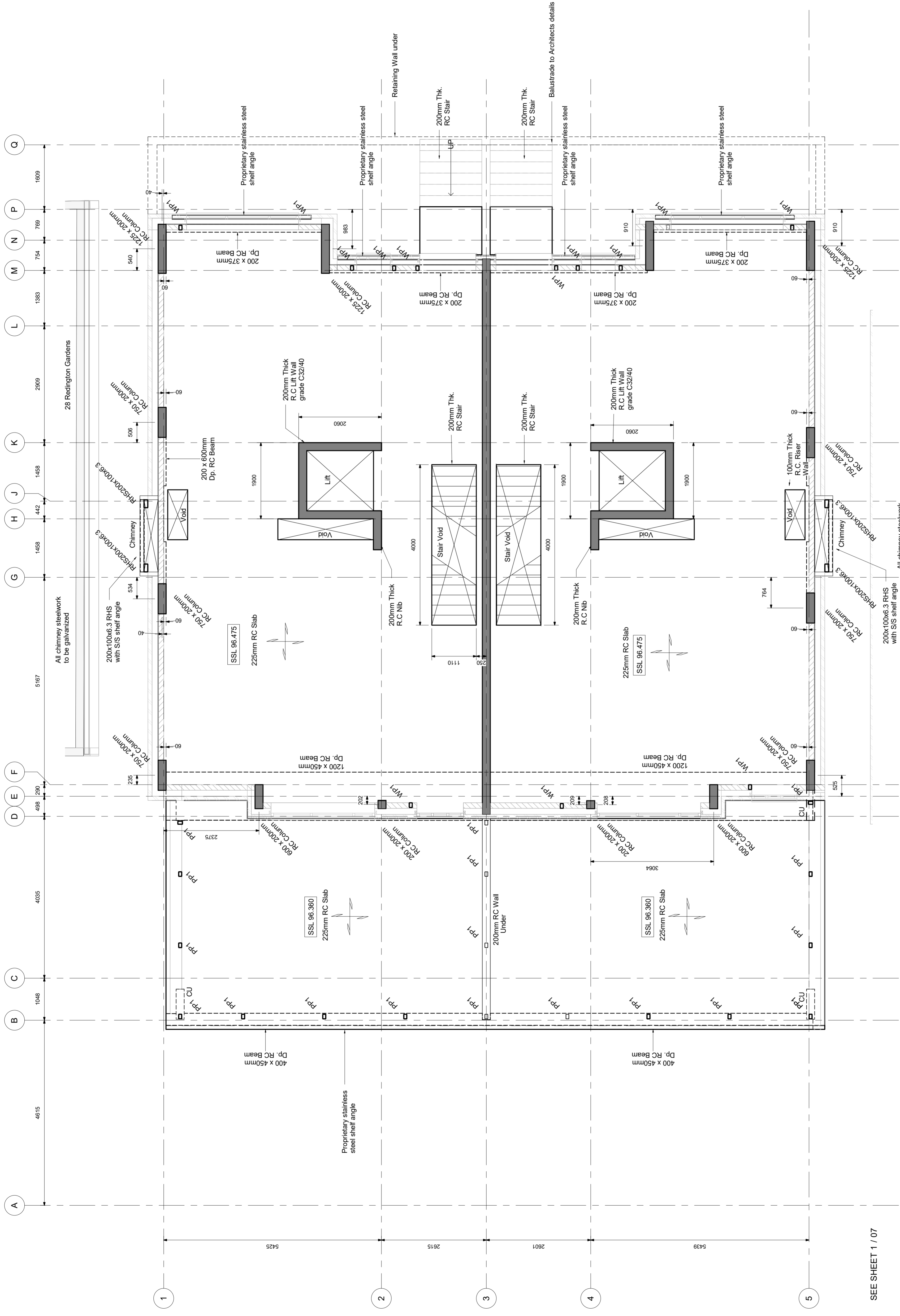


cranston consulting  
Structural & Civil Engineers

Client: MY CONSTRUCTION  
Architect: MY CONSTRUCTION  
Project: 25-26 REDINGTON GARDENS LONDON

Structural & Civil Engineers  
1, 02018 9381 5900  
E: engineering@cranston.com

Wind/Parapet Post Schedule	
Ref	Size
WP1	RHS120x80x6.3
PP1	



SEE SHEET 1 / 07

Upper Ground Layout - SSL  
1-50

LINTEL SCHEDULE	
Internal openings	Clear span length
	900-2500
External Openings	900-1800
	1800-3000

MATERIAL SCHEDULE	
Material	Grade
Mass Concrete	C20/Gen 3
Reinforced Concrete	RC32/40
Structural Steel	S355
Common Brickwork	20.5N/mm <sup>2</sup>
(water absorption between 7% and 20%)	
Engineering Brick	50N/mm <sup>2</sup>
Timber	C24

WORK IN PROGRESS

Rev	Revision Details	Drawn By	Chk. By
P3	ISSUED FOR TENDER		
P2	ISSUED FOR TENDER		
P1	ISSUED FOR TENDER		



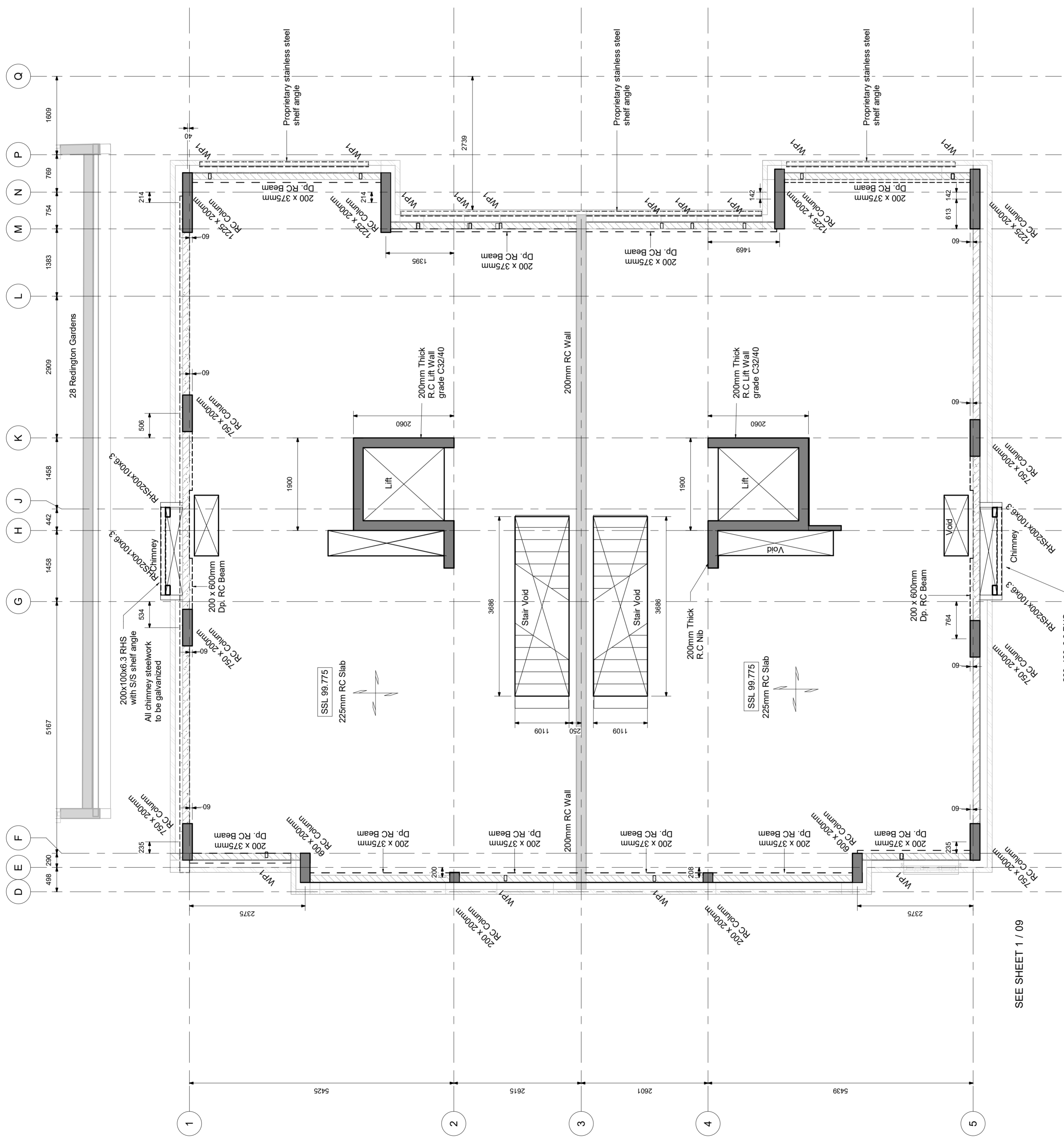
Structural & Civil Engineers

Client	MY CONSTRUCTION
Architect	MY CONSTRUCTION
Project	25-26 REDINGTON GARDENS LONDON

Date	09/20/18	Drawing Scale	As indicated	Rev	P3
Drawn By	AW/S	Checked By	KSC	Drawing Number	180709-GA-06

Title  
No.25-26 PROPOSED UPPER  
GROUND LAYOUT

Wind/Parapet Post Schedule	
Ref	Size
WP1	RHS120x80x6.3
PP1	



SEE SHEET 1 / 08

First Floor Layout - SSL  
1:50

LINTEL SCHEDULE	
Internal openings	Clear span length
	900-2500
External Openings	900-1800
	1800-3000

MATERIAL SCHEDULE	
Material	Grade
Mass Concrete	C20/Gen 3
Reinforced Concrete	RC32/40
Structural Steel	S355
Common Brickwork	20.5N/mm <sup>2</sup>
(water absorption between 7% and 20%)	
Engineering Brick	50N/mm <sup>2</sup>
Timber	C24

WORK IN PROGRESS

DATE: 09/20/18	BY: AWS	CHK: BY: AWS
REV: 01	DESCRIPTION: FIRST ISSUE	DATE: 20/11/2018
REV: 02	DESCRIPTION: REVISED	DATE: 20/11/2018
REV: 03	DESCRIPTION: REVISED	DATE: 20/11/2018



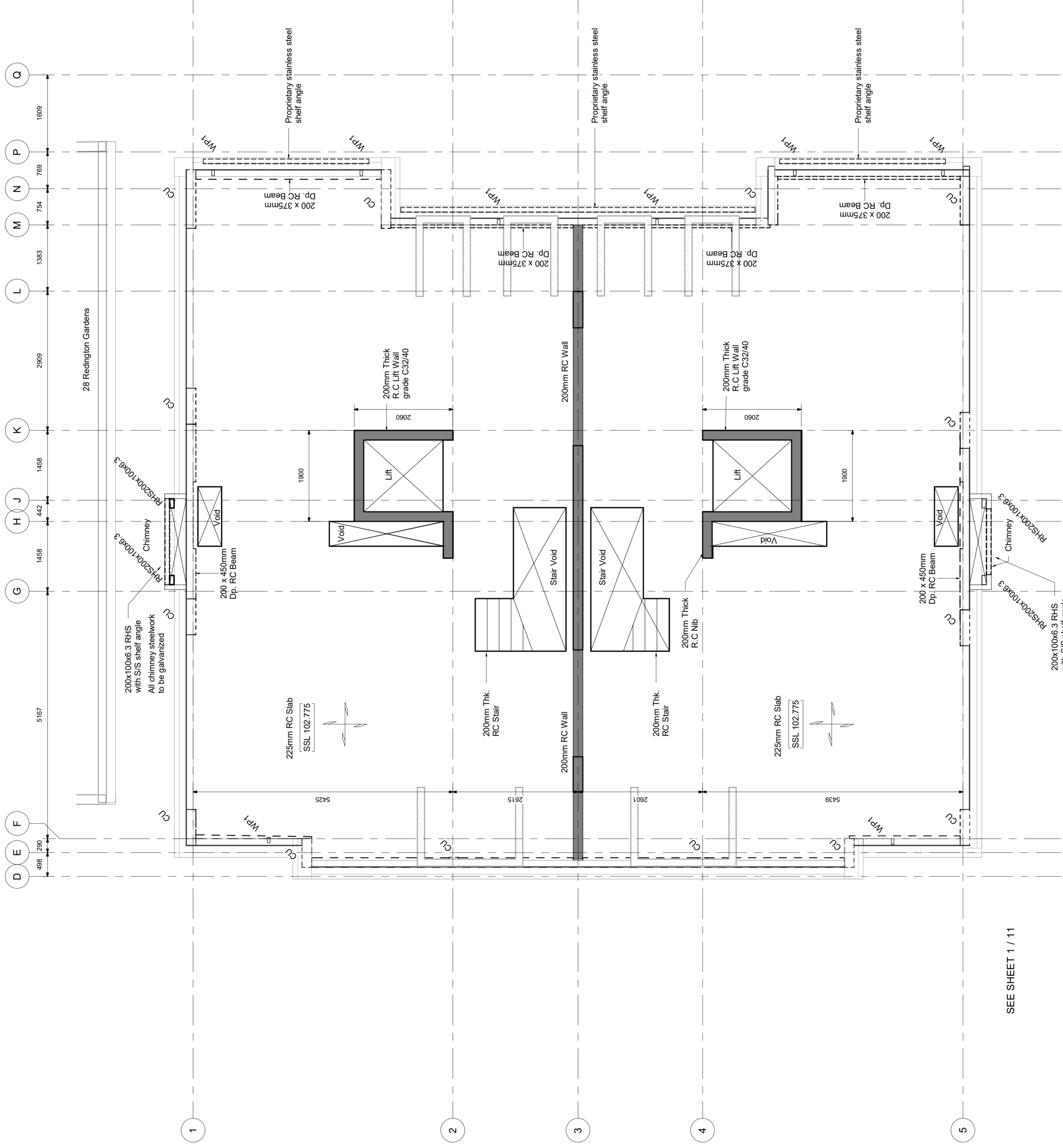
Structural & Civil Engineers

Client: MY CONSTRUCTION  
 Architect: MY CONSTRUCTION  
 Project: 25-26 REDINGTON GARDENS LONDON

Title: No.25-26 PROPOSED FIRST FLOOR LAYOUT

Date	Drawing Scale	Drawing Number	Rev
09/20/18	As indicated	180709-GA-08	P2
Drawn By	Checked By		
AWS	KSC		

Wind/Parapet Post Schedule	
Ref	Size
WP1	RHS120x80x6.3
PP1	



SEE SHEET 1 / 11

Second Floor Layout - SSI  
1:50

LINTEL SCHEDULE	
Clear span length	Size
900-2500	Wayner R3 concrete Linel
900-1800	Caltic Ang - 167
1800-3000	Caltic Ang - 215

MATERIAL SCHEDULE	
Material	Grade
Mass Concrete	C20/Gen 3
Reinforced Concrete	RC32/40
Structural Steel	S355
Common Brickwork	20.5N/mm <sup>2</sup>
(water absorption between 7% and 20%)	
Engineering Brick	50N/mm <sup>2</sup>
Timber	C24

WORK IN PROGRESS

Rev	Revision Details	Drawn By	Check By
01	ISSUED FOR TENDER	AWG	2017/08/02
02	REVISED	AWG	2017/08/02
03	REVISED	AWG	2017/08/02
04	REVISED	AWG	2017/08/02
05	REVISED	AWG	2017/08/02



Structural & Civil Engineers

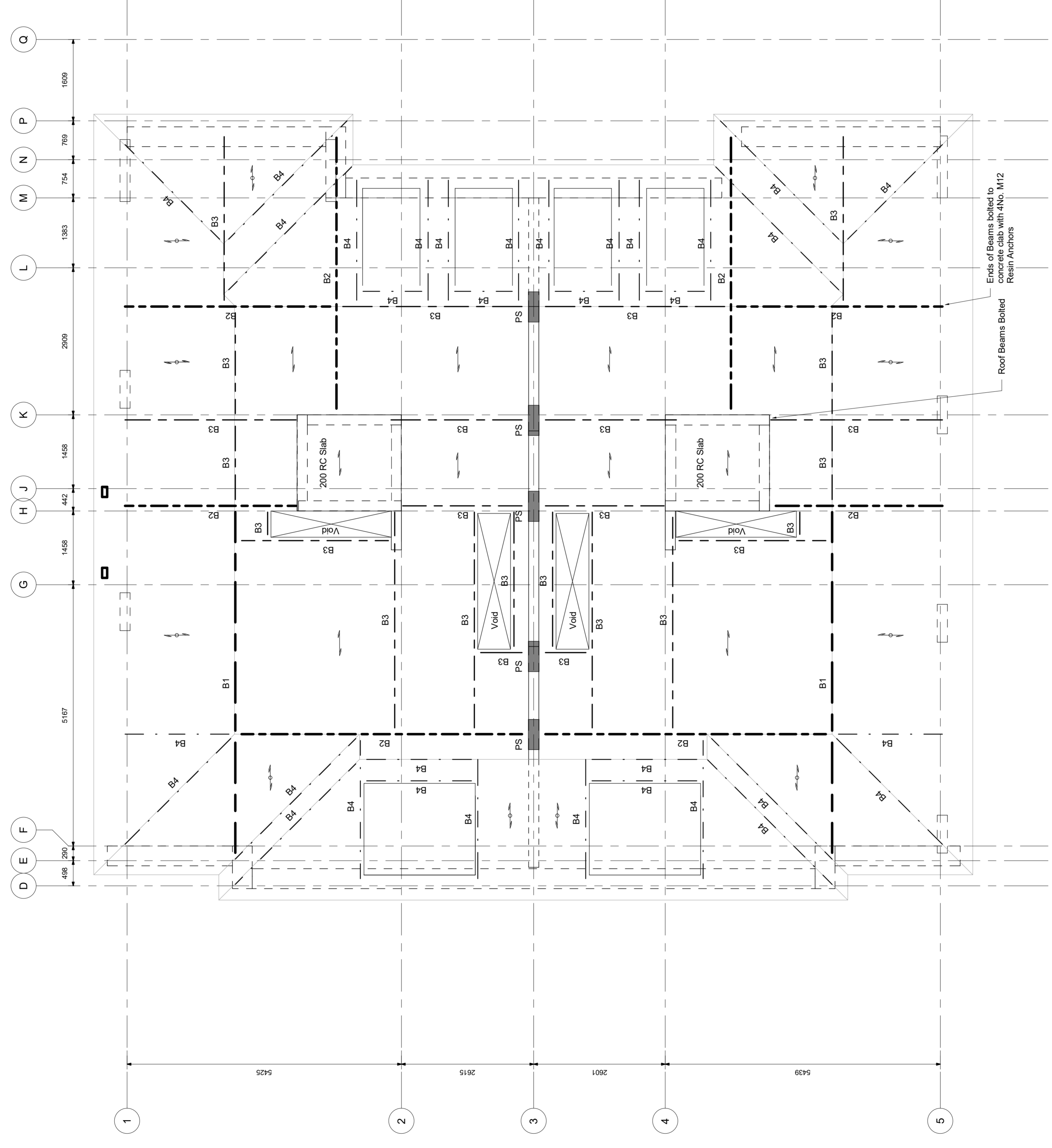
Client: MY CONSTRUCTION  
 Architect: MY CONSTRUCTION  
 Project: 25-26 REDINGTON GARDENS LONDON

Title: No. 25-26 PROPOSED SECOND FLOOR LAYOUT

Date	Drawing Scale	Rev
09/21/18 <td>As indicated <td>P2</td> </td>	As indicated <td>P2</td>	P2
Drawn By: AWS <td>Checked By: KSC <td>Drawing Number: 180709-GA-10</td> </td>	Checked By: KSC <td>Drawing Number: 180709-GA-10</td>	Drawing Number: 180709-GA-10

Roof Steel Schedule	
Ref	Size
B1	UC203x203x71
B2	UC203x203x60
B3	UB203x133x25
B4	UB178x102x19

Denotes: 200x50mm C24 Joists @ 400mm c/c  
 Denotes: 150x50mm C24 Rafter @ 400mm c/c  
 PS  
 Denotes: 215x215x600mm long Padstone strapped to wall with 4No. 30x5 ms Galv. Straps 1.5m long



14 - Roof FFL  
1:50

WORK IN PROGRESS

Rev	Revision Details	Drawn By	Check By
P1	QAS3 UPDATED	AWG	ZH12/28/KSC: ZH12/28



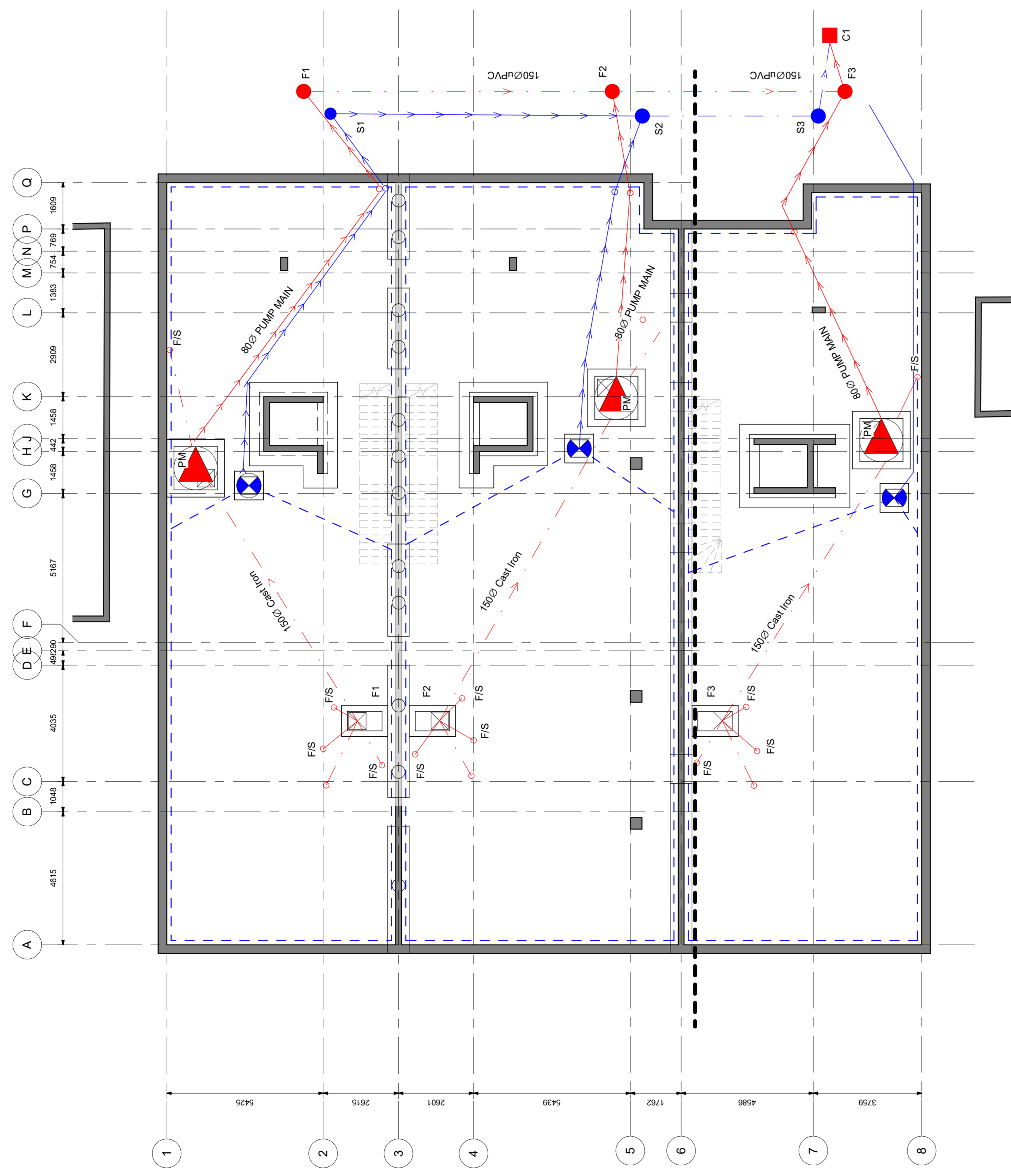
Structural & Civil Engineers  
 Cranston Consulting  
 1, 0208 938 1590  
 E: engineering@cranston.com

Client: MY CONSTRUCTION  
 Architect: MY CONSTRUCTION  
 Project: 25-26 REDINGTON GARDENS LONDON

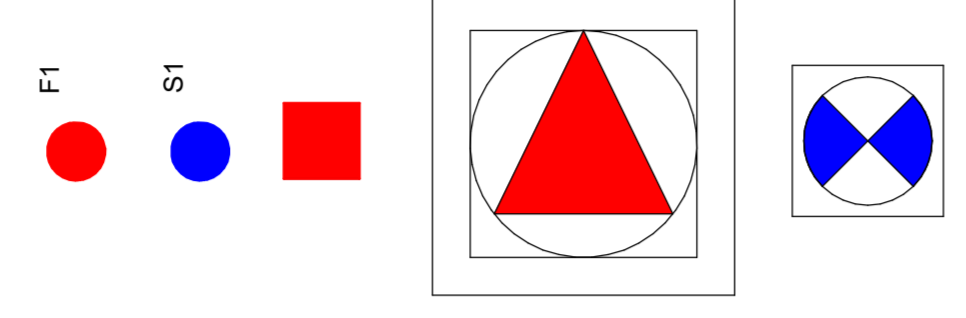
Title: No. 25-26 PROPOSED ROOF STEELWORK LAYOUT

Date	Drawing Scale	Drawing Number	Rev
09/29/18 <td>As indicated <td>180709-GA-12 <td>P1</td> </td></td>	As indicated <td>180709-GA-12 <td>P1</td> </td>	180709-GA-12 <td>P1</td>	P1
Drawn By: AWS	Checked By: KSC		





- 1000 Cast iron flow socket WC/2 1000 Cast Iron branch
- 1500 Cast iron Foul @ min 1:40 fall
- 800 MDPE Pump
- 1000 Cast iron Storm @ min 1:80 fall
- 500 Pump Main
- Newton Cavity drainage channel



Manhole Schedule - Foul Sewers					
Ref	Cover Level (m)	Invert Level (m)	Depth (m)	Manhole Dia (mm)	Manhole Cover Size
F1	94.6	92.00	2.6m	1200	600x600
F2	94.6	91.725	2.875	1200	600x600
F3	94.6	91.525	3.075	1200	600x600
C1	94.8	91.375	3.425	1200	600x600

Manhole Schedule - Storm Drainage					
Ref	Cover Level (m)	Invert Level (m)	Depth (m)	Manhole Dia (mm)	Manhole Cover Size
S1	94.6	92.0	2.6	1200	600x600
S2	94.6	91.86	2.94	1200	600x600
S3	94.6	91.76	2.84	1200	600x600

Basement Layout - SSL  
1:100

DESIGNED	DATE	BY
CHECKED	DATE	BY
APPROVED	DATE	BY

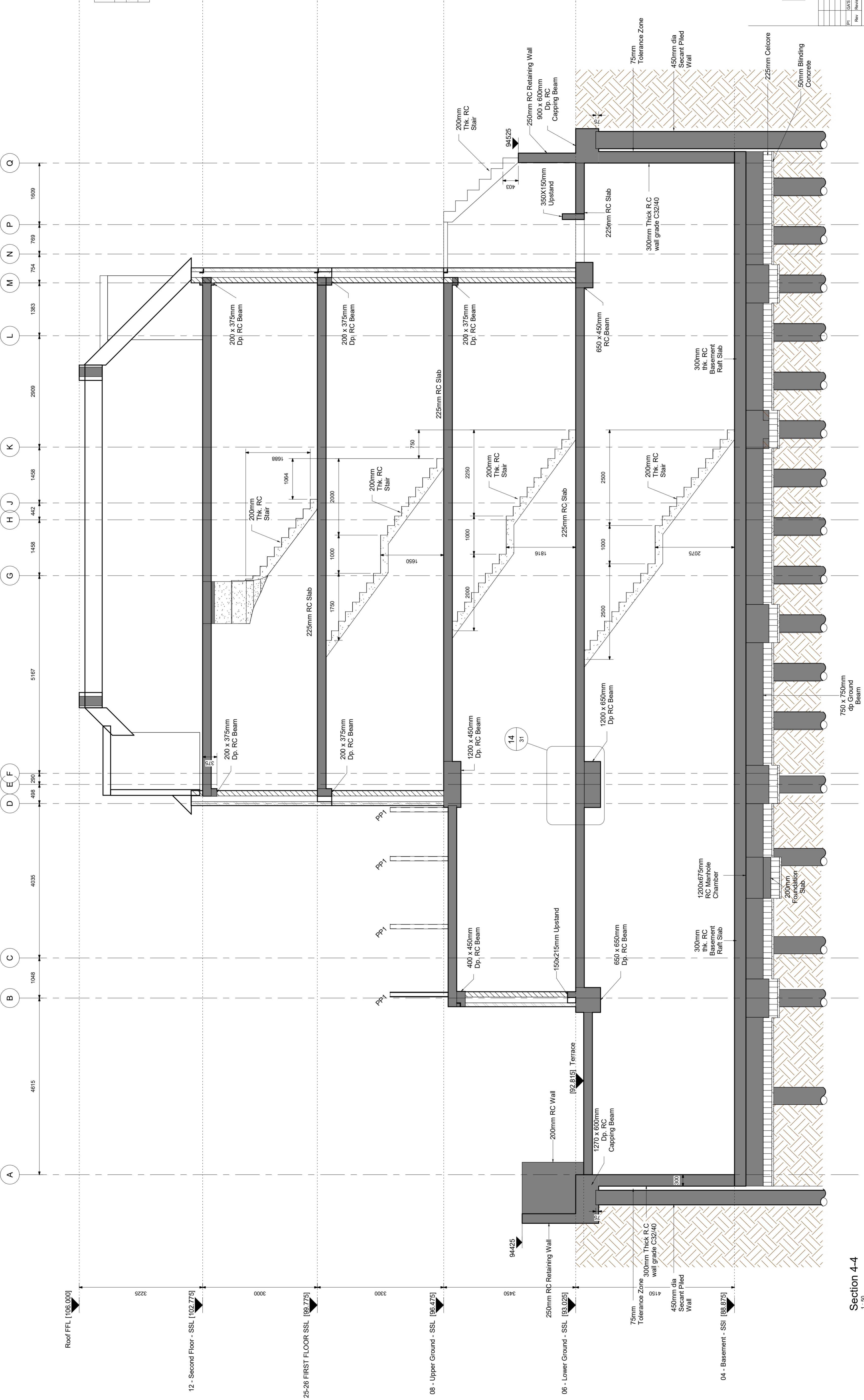
**cranston consulting**  
 Structural & Civil Engineers  
 1, 0208 9181 5900  
 1, 0208 9181 5900  
 E: info@cranstonconsulting.com

Client: **MY CONSTRUCTION**  
 Architect: **MY CONSTRUCTION**  
 Project: **25-26 REDINGTON GARDENS LONDON**

Title: **PROPOSED DRAINAGE LAYOUT**

Date	12/19/18	Drawing Scale	As indicated	Drawing Number	180709-GA-15	Rev	P1
Drawn By	AWS	Checked By	KSC	Drawn By	KSC		

Wind/Parapet Post Schedule	
Ref	Size
WP1	
PP1	RHS120x80x6.3



WORK IN PROGRESS

Section 4-4  
1:50

Rev	Description	Date
1	ISSUED FOR TENDER	09/29/18
2	REVISED	09/29/18
3	REVISED	09/29/18
4	REVISED	09/29/18
5	REVISED	09/29/18
6	REVISED	09/29/18
7	REVISED	09/29/18
8	REVISED	09/29/18
9	REVISED	09/29/18
10	REVISED	09/29/18

**cranston**  
consulting  
Structural & Civil Engineers  
1, 0298 9181 5900  
Newbury Road,  
Basingstoke,  
Hampshire,  
RG24 0BA,  
UK

Client: **MY CONSTRUCTION**  
Architect: **MY CONSTRUCTION**  
Project: **25-26 REDINGTON GARDENS LONDON**

Title: **No. 25-26 PROPOSED BUILDING SECTIONS SHEET 1**

Date	Drawing Scale	Rev
09/29/18 <td>As indicated <td>P1</td> </td>	As indicated <td>P1</td>	P1
Drawn By: AWS <td>Checked By: KSC <td>Drawing Number: 180709-SE-22</td> </td>	Checked By: KSC <td>Drawing Number: 180709-SE-22</td>	Drawing Number: 180709-SE-22

MATERIAL SCHEDULE	
Material	Grade
Mass Concrete	C20/Gen 3
Reinforced Concrete	RC32/40
Structural Steel	S355
Common Brickwork	20.5N/mm <sup>2</sup>
(water absorption between 7% and 20%)	
Engineering Brick	50N/mm <sup>2</sup>
Timber	C24

LINTEL SCHEDULE	
Internal openings	Clear span length
900-2500	Wayner R3 concrete Lintel
External Openings	900-1800
	1800-3000
	Catic Aug - 167
	Catic Aug - 215

LINTEL SCHEDULE		
Internal openings	Clear span length	Size
	900-2500	Wayner R3 concrete Lintel
External Openings	900-1800	Cainic Ang - 187
	1800-3000	Cainic Ang - 215

MATERIAL SCHEDULE		
Material	Grade	
Mass Concrete	C20/Gen 3	
Reinforced Concrete	RC32/40	
Structural Steel	S355	
Common Brickwork	20.5N/mm <sup>2</sup>	
(water absorption between 7% and 20%)		
Engineering Brick	50N/mm <sup>2</sup>	
Timber	C24	

WORK IN PROGRESS

Rev	Reason/Details	Date	Drawn By	Check By	Date
01	ISSUED				

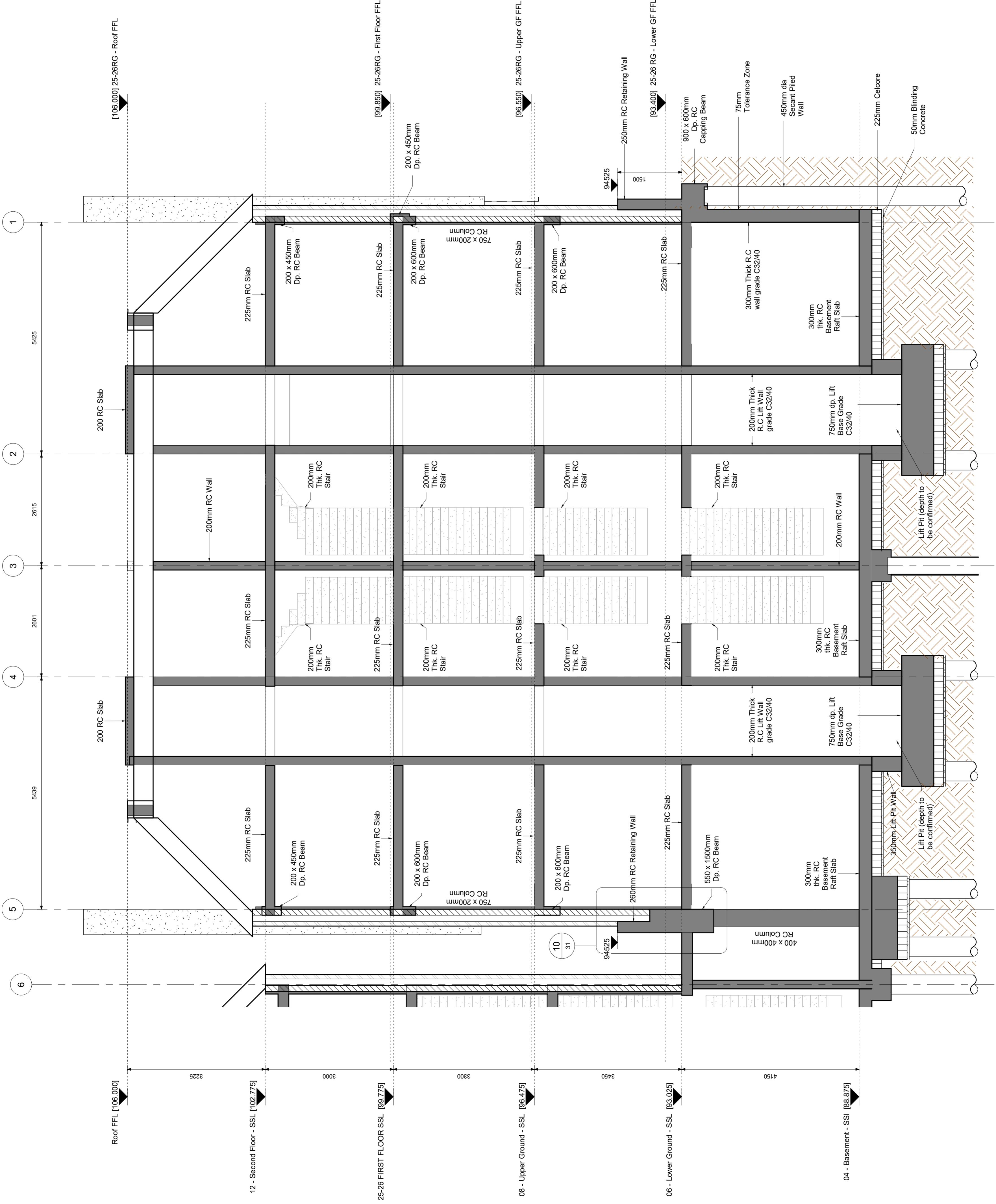
**cranston consulting**  
Structural & Civil Engineers

0203 291 1000  
1, 2028 1918 1900  
Newbury Road, Newbury, Berkshire, RG13 2AA, UK  
E: info@cranston.com

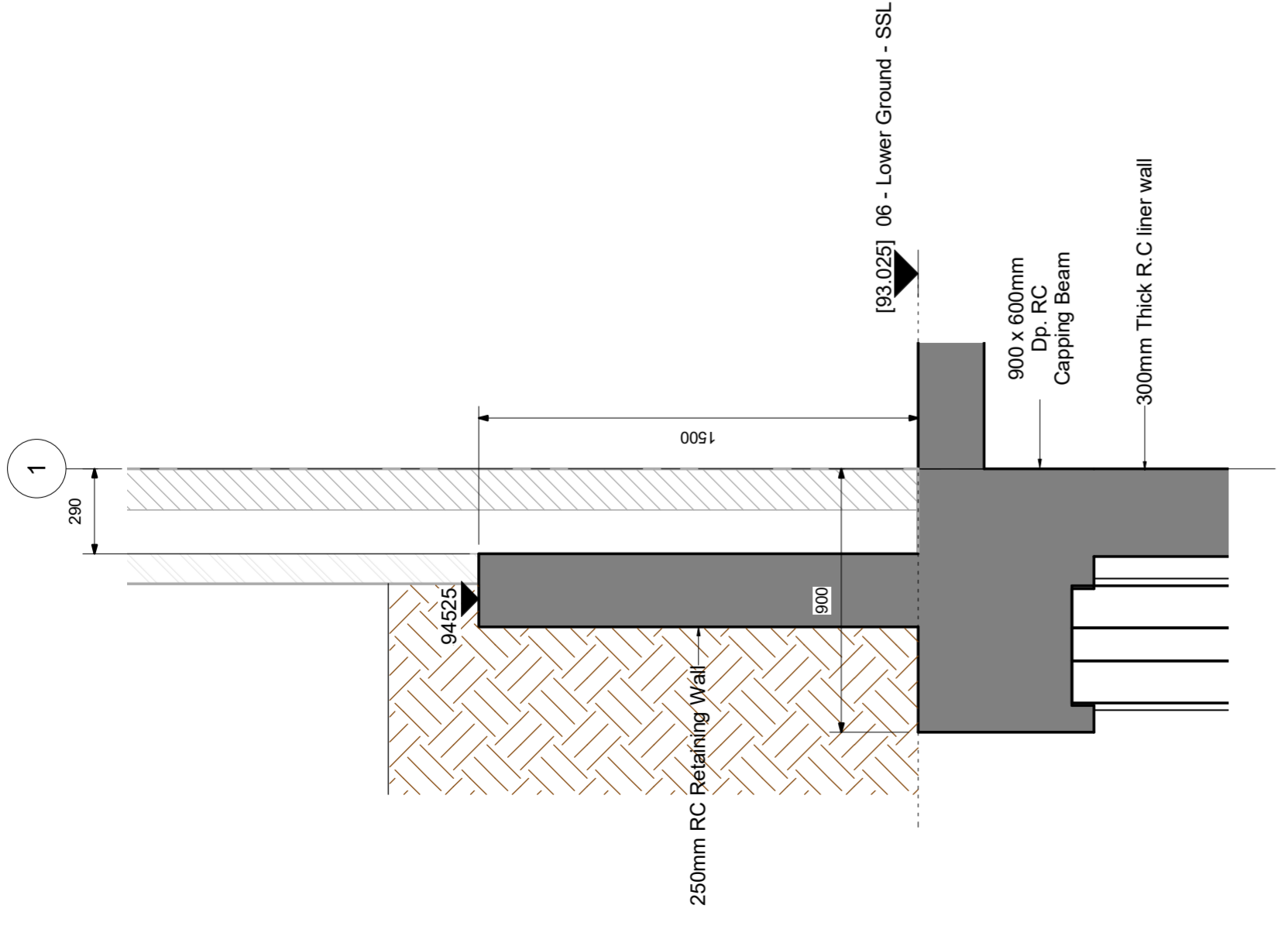
Client: **MY CONSTRUCTION**  
Architect: **MY CONSTRUCTION**  
Project: **25-26 REDINGTON GARDENS LONDON**

Title: **No. 25-26 PROPOSED BUILDING SECTIONS SHEET 2**

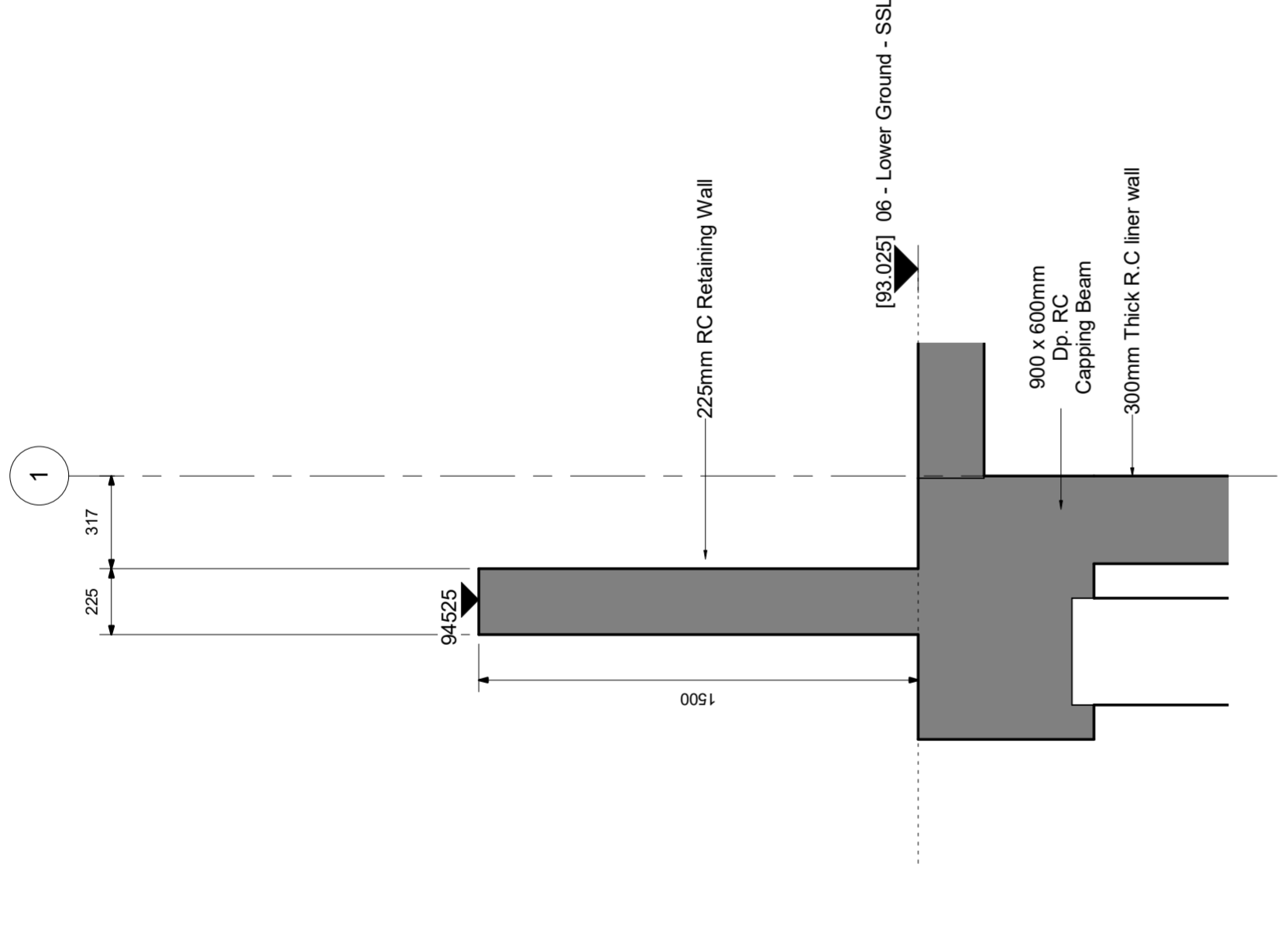
Date	09/28/18	Drawing Scale	As indicated	Rev	P1
Drawn By	AWS	Checked By	KSC	Drawing Number	180709-SE- 23



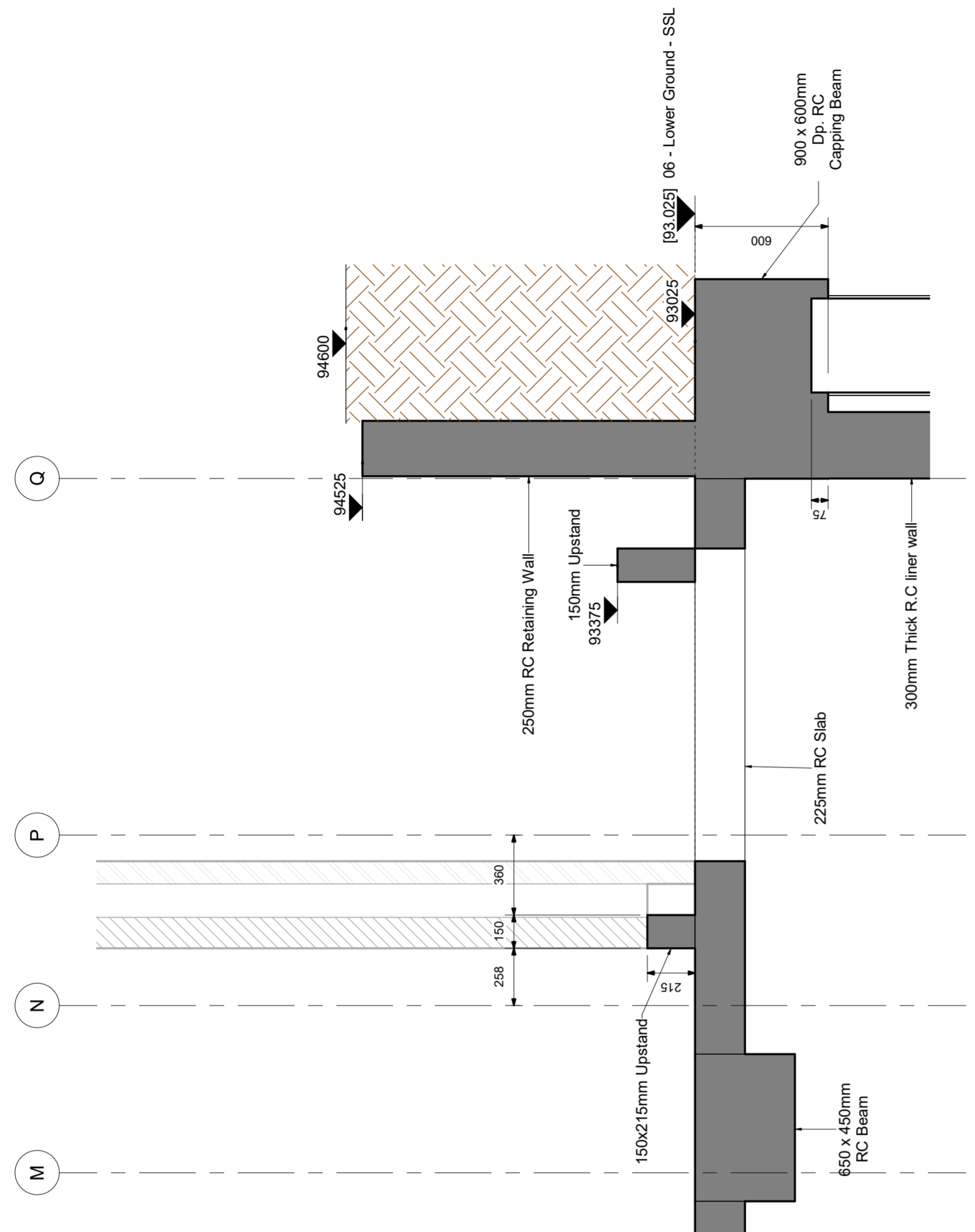
Section E-E  
1:50



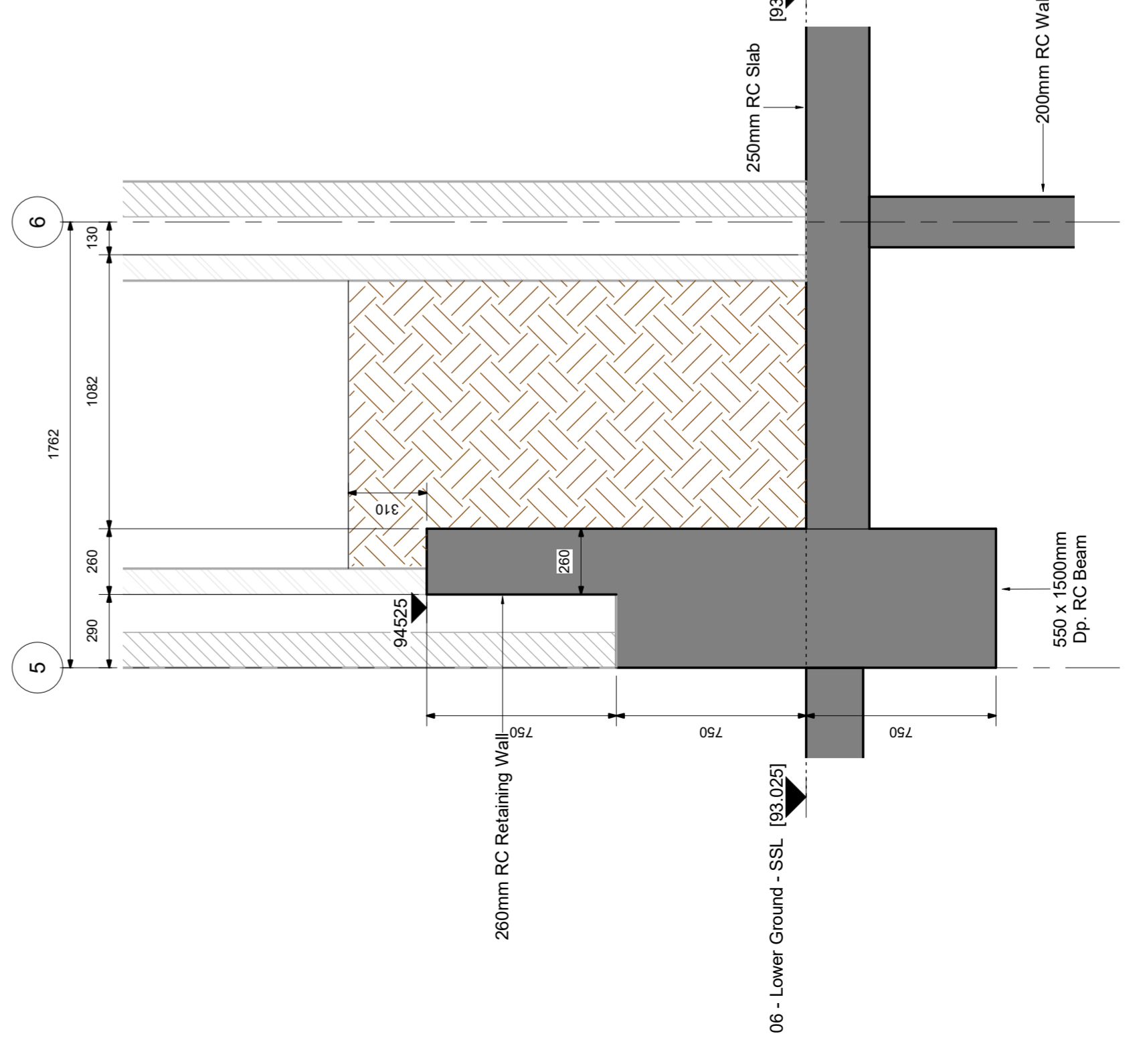
SECTION 1  
1:20



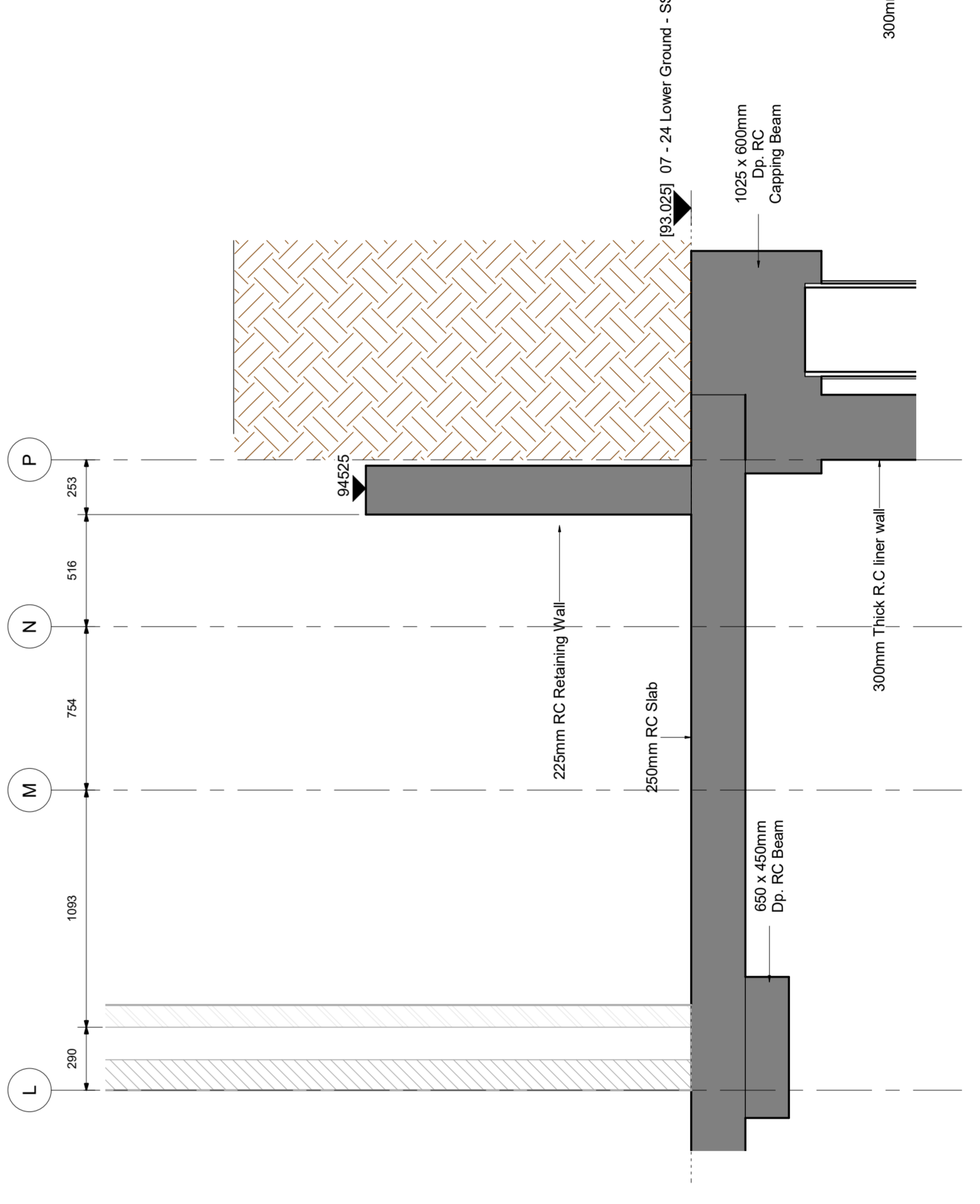
SECTION 2  
1:20



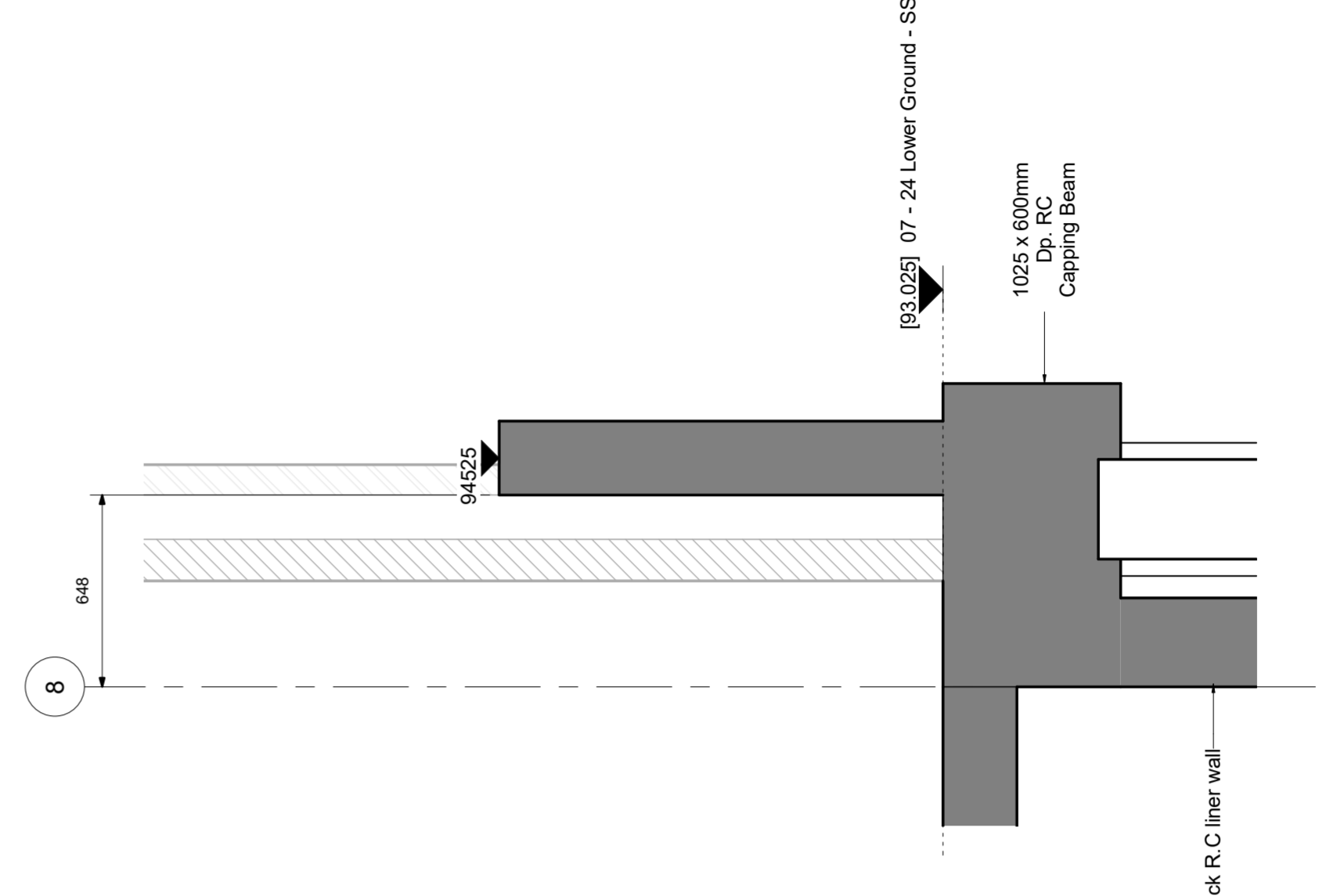
SECTION 3  
1:20



SECTION 5  
1:20



SECTION 6  
1:20

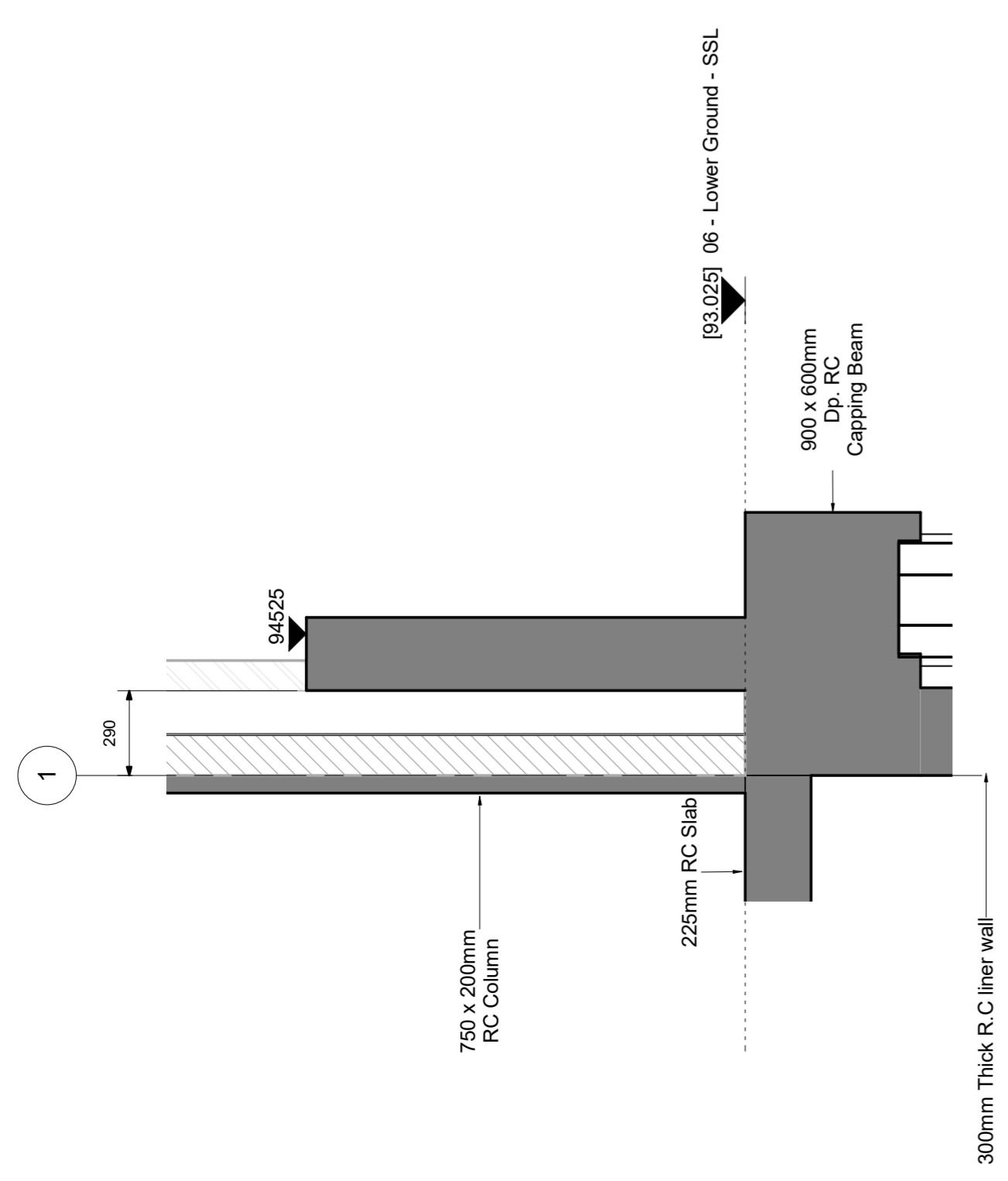


SECTION 7  
1:20

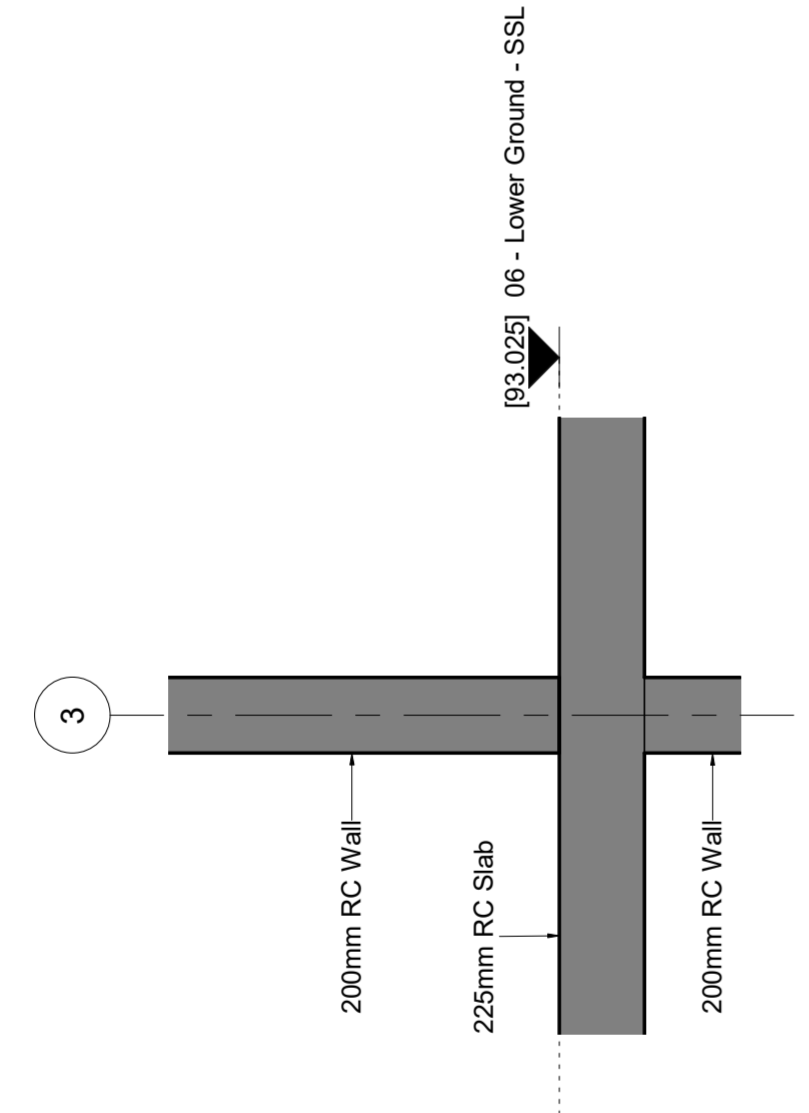
Rev	Revision Details	Drawn By	Checked By	Drawing Number	Rev
P3	GAIS UPDATED	AWS		180709-SE-30	P3
P2	UPDATED TO ARCHITECTS PLANS AND SECTIONS	AWS			
P1	FIRST ISSUE	AWS			
		Drawn By	Checked By	Drawing Number	Rev
		AWS	KSC	180709-SE-30	P3

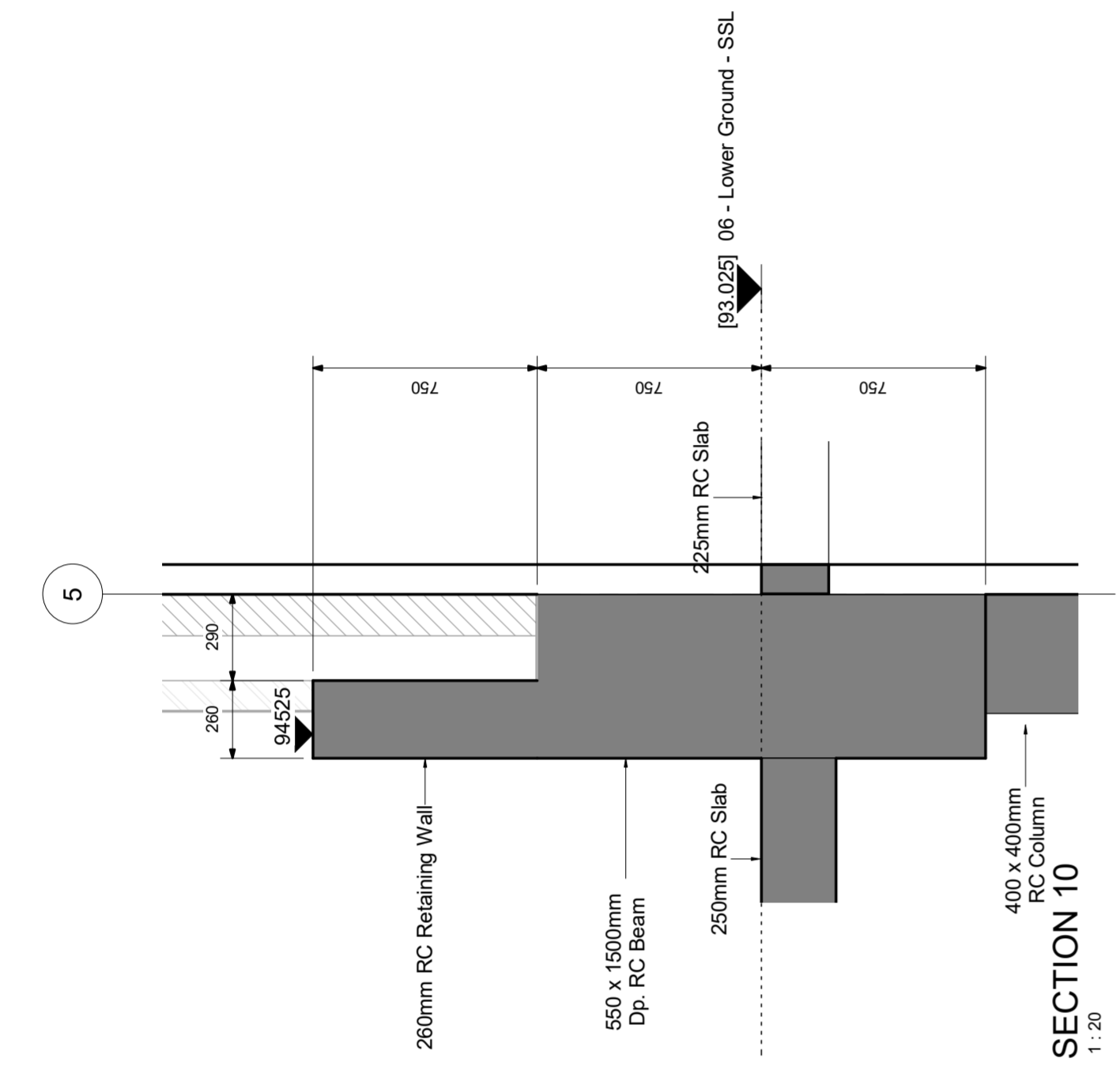
 <b>cranston consulting</b> Structural & Civil Engineers 1, 0228 1918 1900 1, 0228 1918 1900 E: info@cranston.com.au	
Client	MY CONSTRUCTION
Architect	MY CONSTRUCTION
Project	25-26 REDINGTON GARDENS LONDON
Title	PERIMETER RETAINING WALL SECTIONS



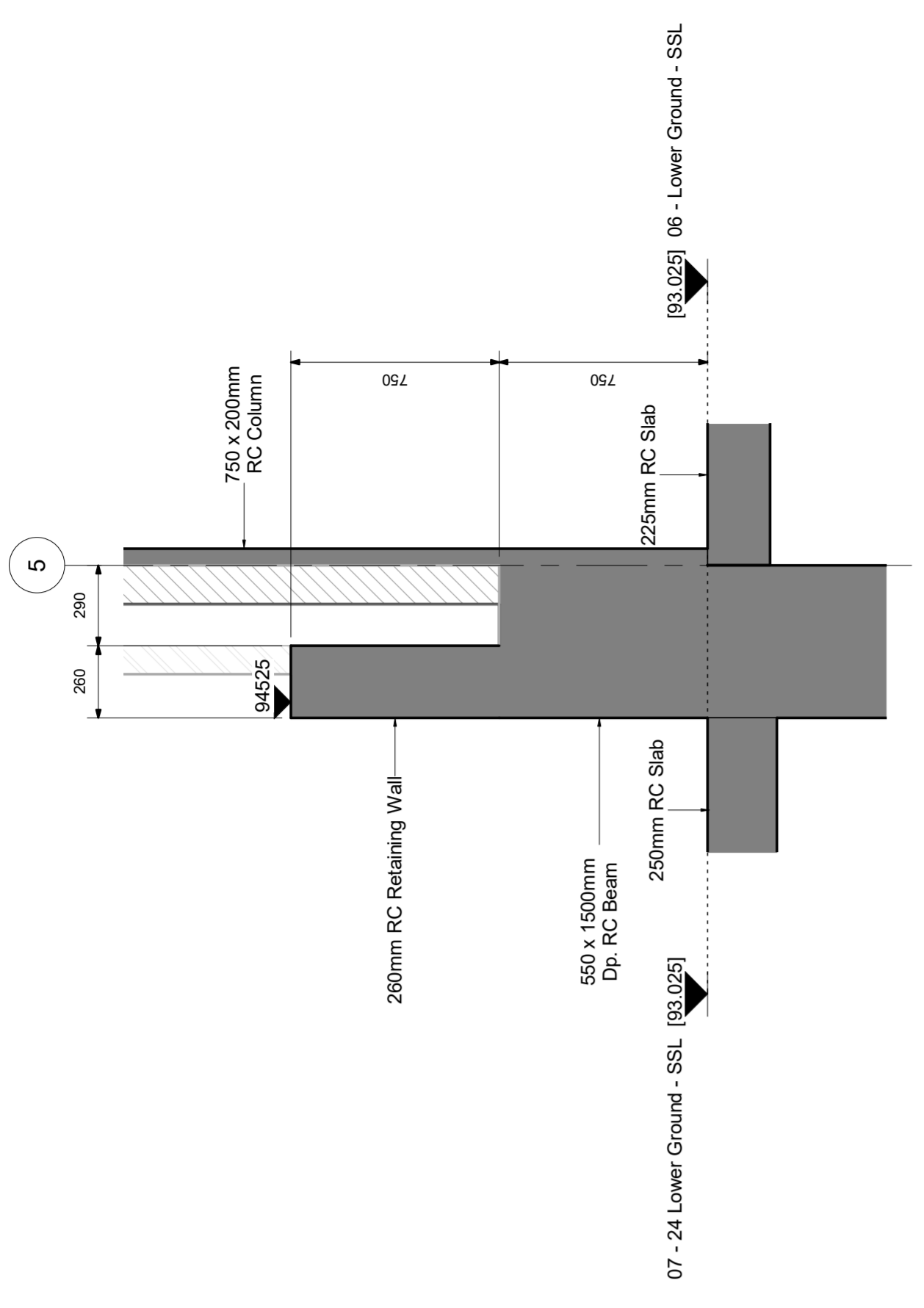
SECTION 8  
1:20



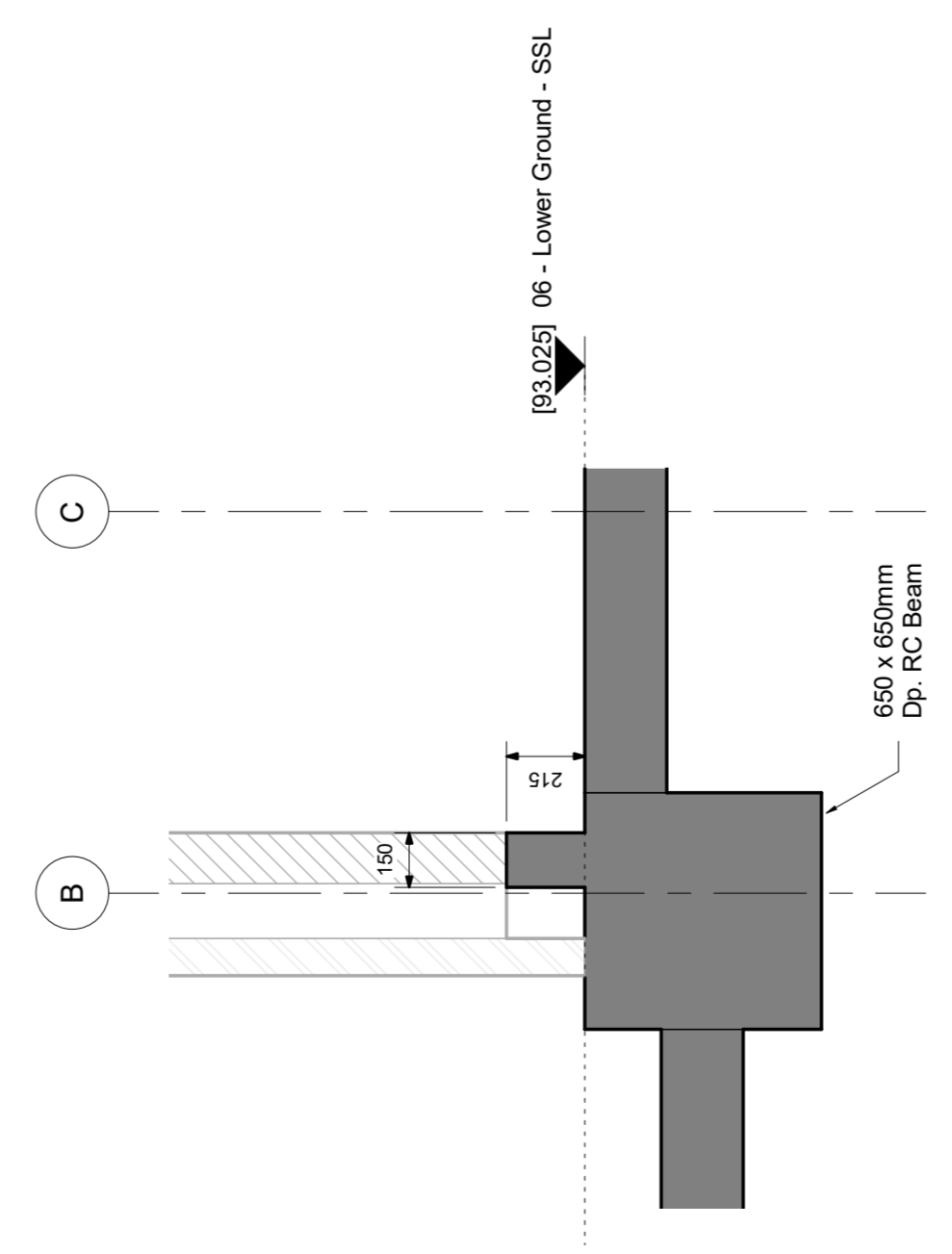
SECTION 9  
1:20



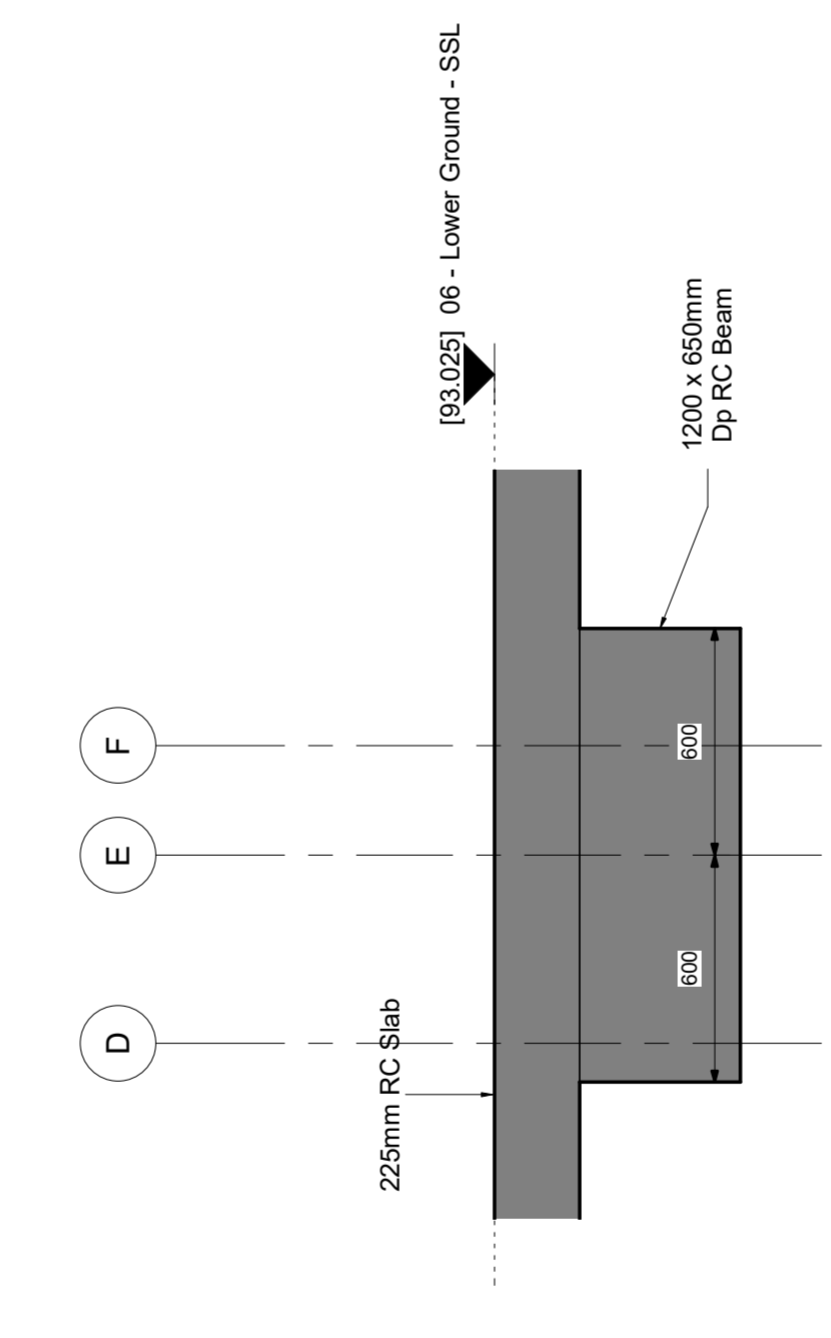
SECTION 10  
1:20



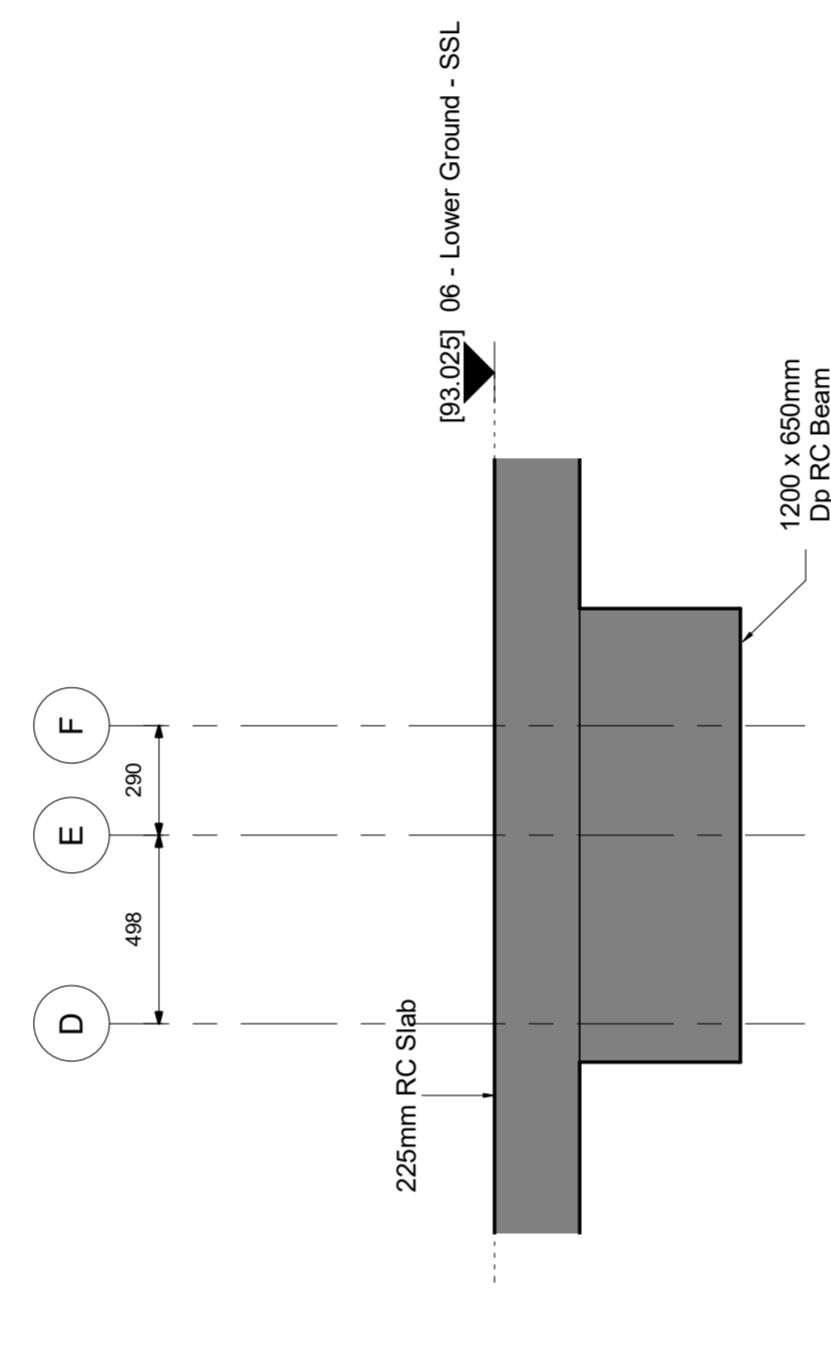
SECTION 11  
1:20



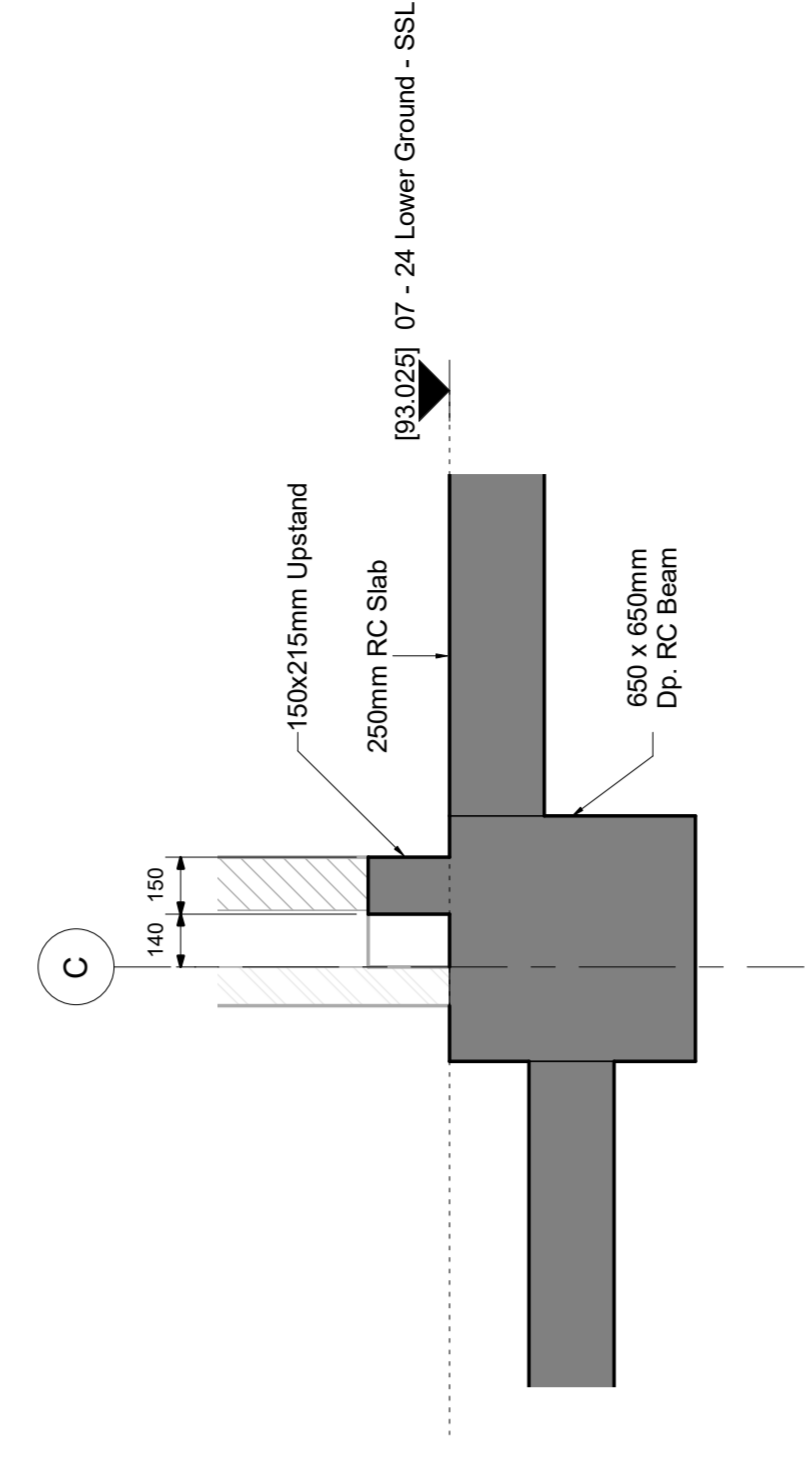
SECTION 12  
1:20



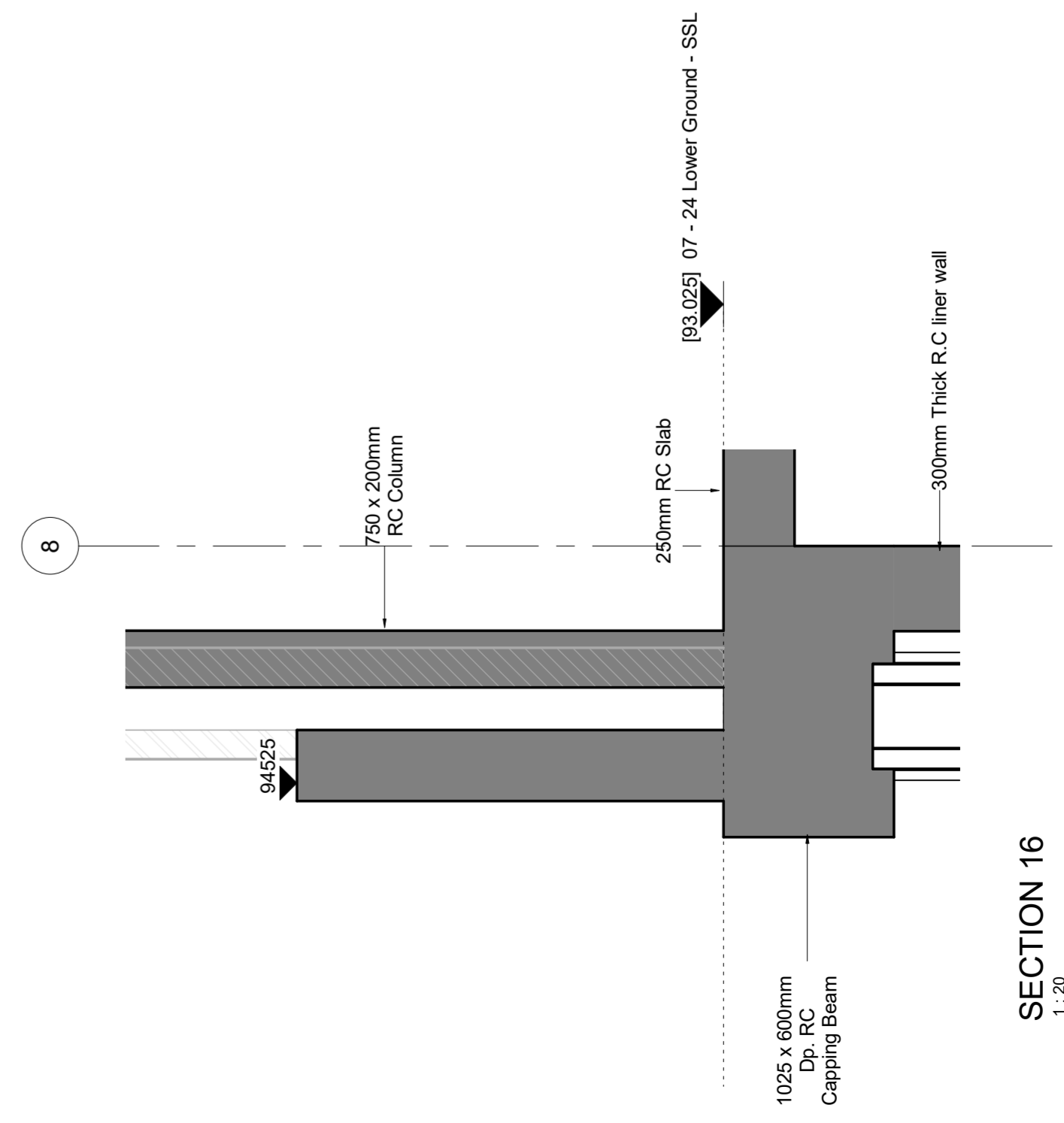
SECTION 13  
1:20



SECTION 14  
1:20



SECTION 15  
1:20



SECTION 16  
1:20

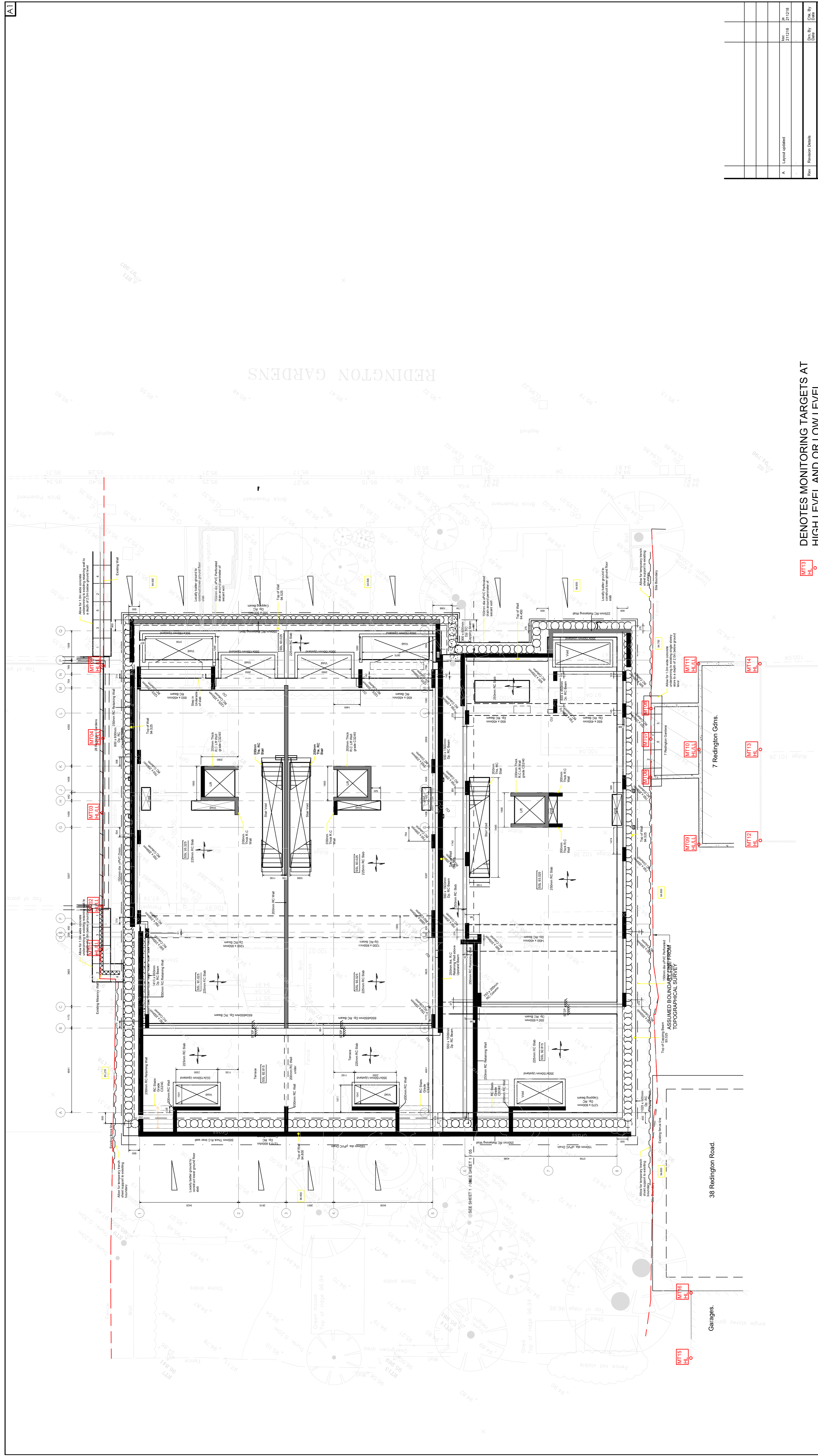
Rev	Number	Date
P3	GAIS UPDATED	21/12/18
P2	UPDATED TO ARCHITECTS PLANS AND SECTIONS	14/12/18
P1	FIRST ISSUE	14/12/18
Rev	Number	Date

**cranstons**  
 consulting  
 Structural & Civil Engineers  
 1, 4228/1918, 5/90  
 NEWTON ROAD,  
 BUCKLEFIELD,  
 SOUTHAM,  
 RG2 1JH


Client: **MY CONSTRUCTION**  
 Architect: **MY CONSTRUCTION**  
 Project: **25-26 REDINGTON GARDENS LONDON**

Title: **LOWER GND FLOOR SECTION DETAILS - SHEET 1**

Date	Drawing Scale	Rev
09/21/18	1:20	P3
Drawn By	Checked By	Drawing Number
AWIS	KSC	180709-SE-31




**MT13 HL** DENOTES MONITORING TARGETS AT HIGH LEVEL AND OR LOW LEVEL

 <b>cranston consulting</b> Structural & Civil Engineers <small>SEARCH HOUSE          24-25 REDINGTON GARDENS          LONDON W8 4AZ          T: 0208 9181 9900          E: INFO@CRANSTON.CO.UK</small>	
Client	MY Construction
Architect	MY Construction
Project	24-25 Redington Gardens London
Drawing	Monitoring Points
Date	Oct. 18
Scale	A1 @ 1:100
Drawn by	Checked by
Rev	AT
DWG No.	180709-TW-53
Rev.	A

MAX 1.2 HIGH IF REMAINING WALL

4 STOREY BUILDING PILED FOUNDATIONS

EXT WALL

EXT FENCE

SINGLE STOREY GARAGE

2 STOREY HOUSE

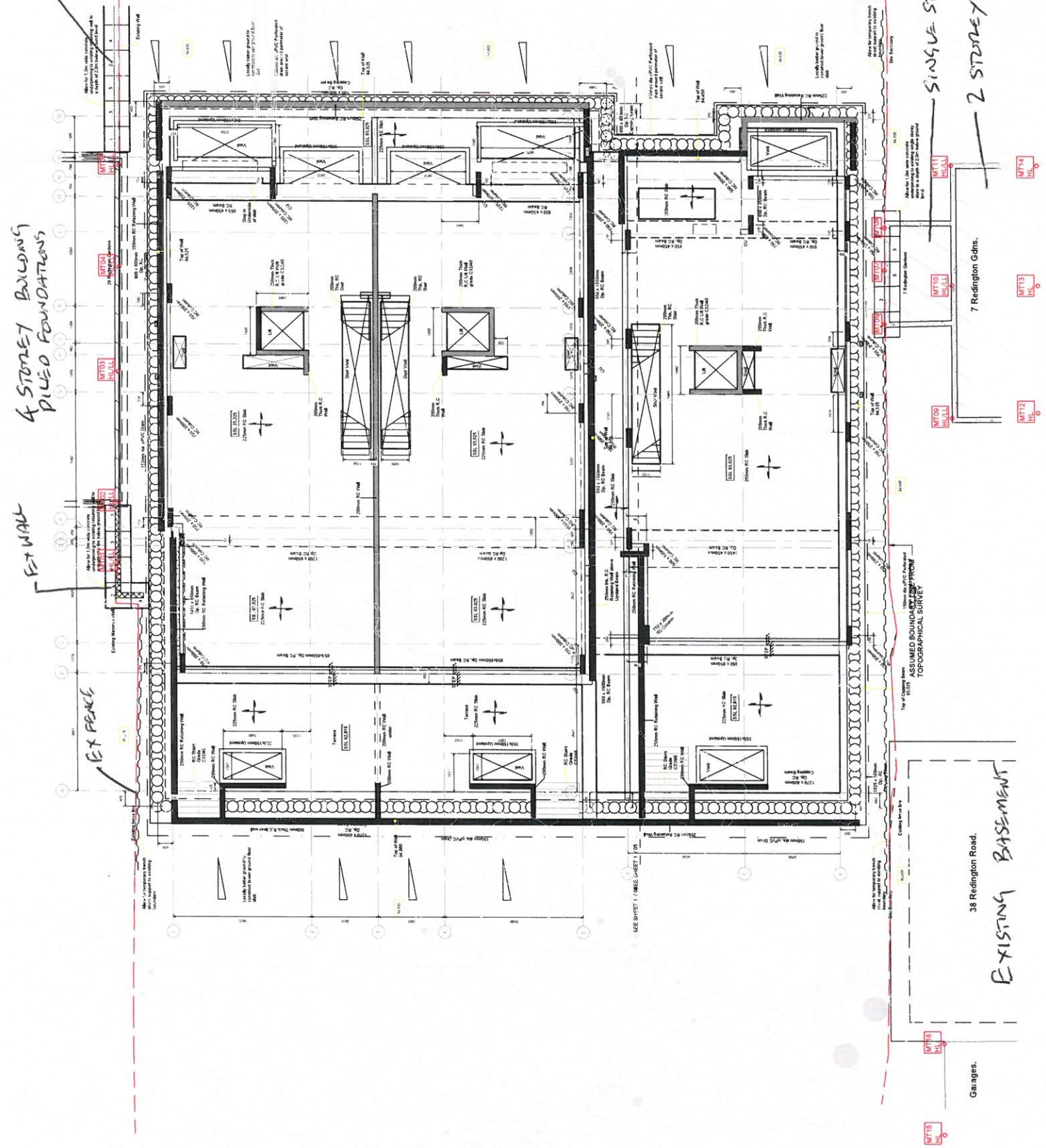
7 Redington Gdns.

38 Redington Road.

EXISTING BASEMENT

Garages.

MT13 DENOTES MONITORING TARGETS AT HIGH LEVEL AND/OR LOW LEVEL



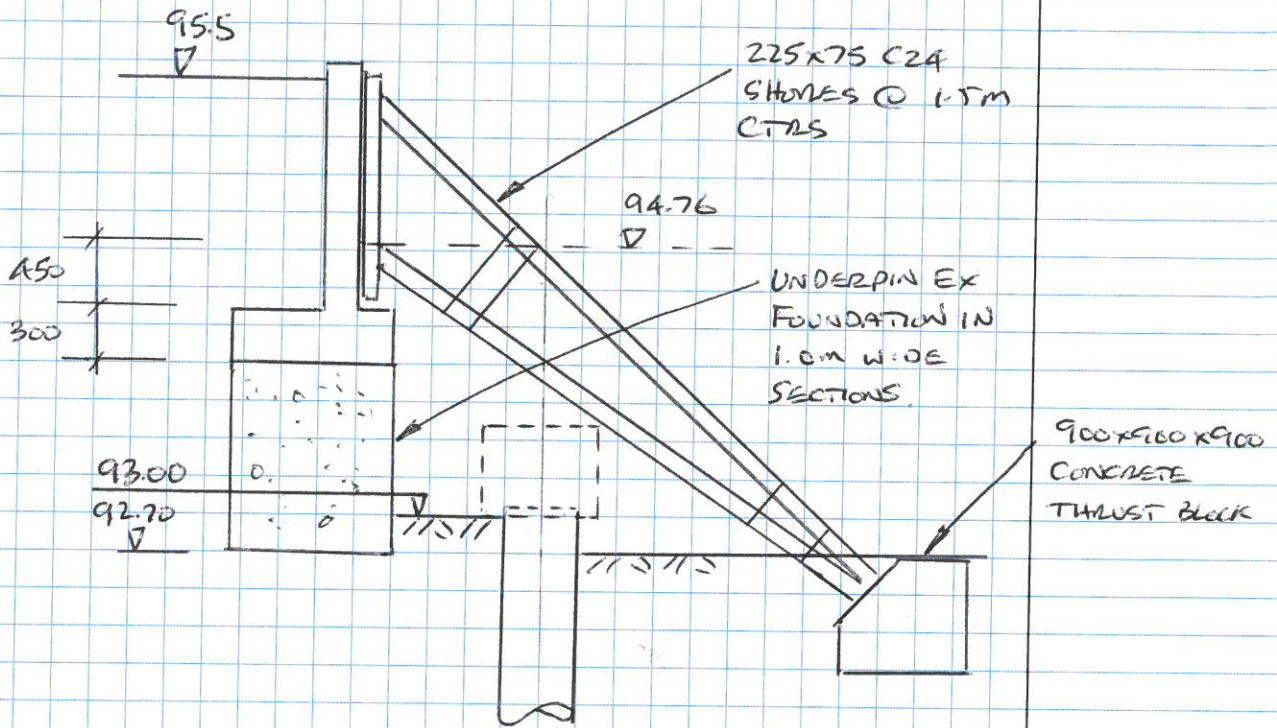
Client	MY Construction
Contract	MY Construction
Project	24-25 Redington Gardens London
Drawing	Monitoring Points
Scale	A1 @ 1:100
Checked by	AT
Drawing No.	180709-TW-53 A
Rev.	



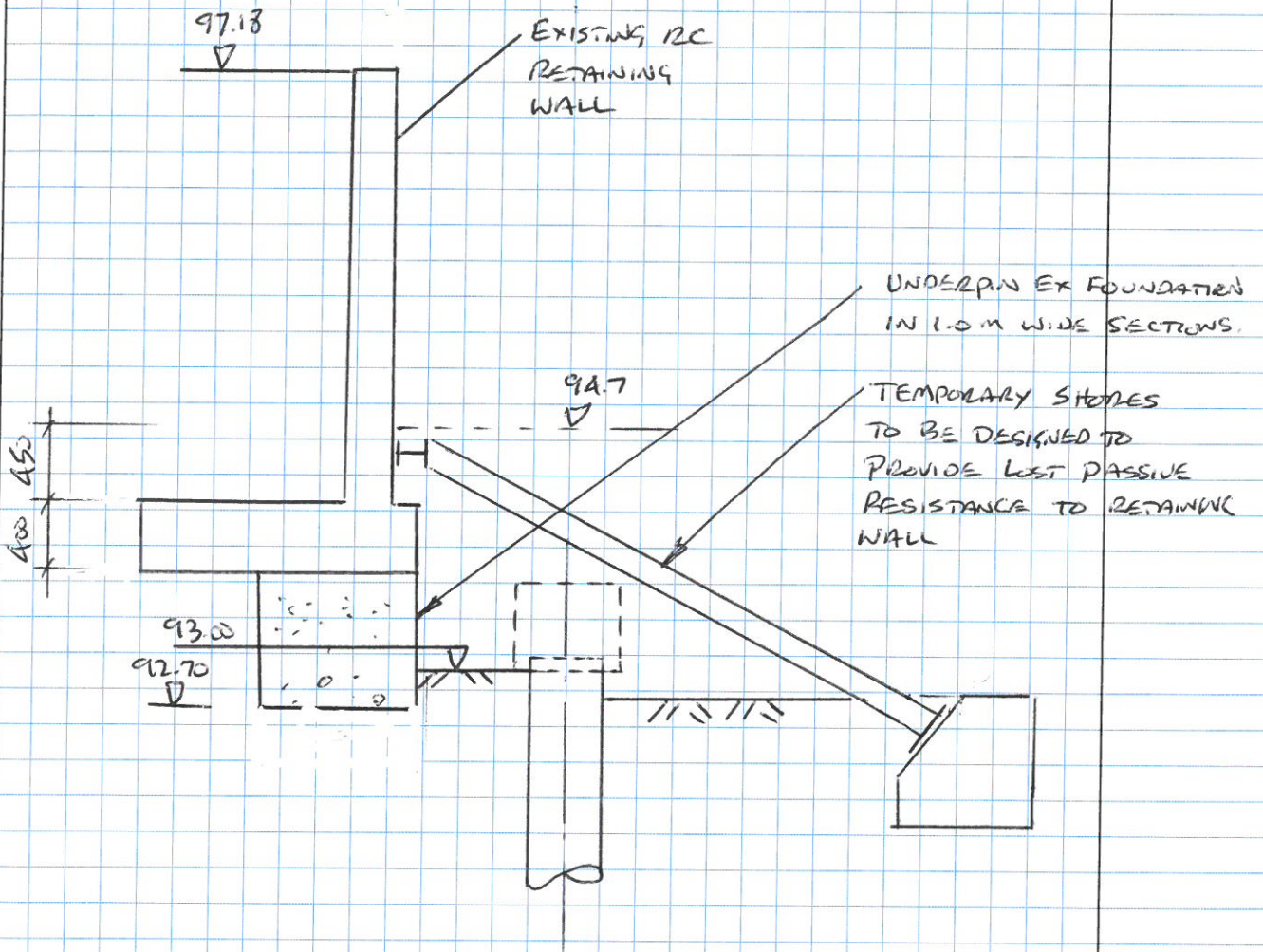
Rev.	1	Issue	Issue
Rev.	2	Issue	Issue
Rev.	3	Issue	Issue
Rev.	4	Issue	Issue
Rev.	5	Issue	Issue
Rev.	6	Issue	Issue
Rev.	7	Issue	Issue
Rev.	8	Issue	Issue
Rev.	9	Issue	Issue
Rev.	10	Issue	Issue



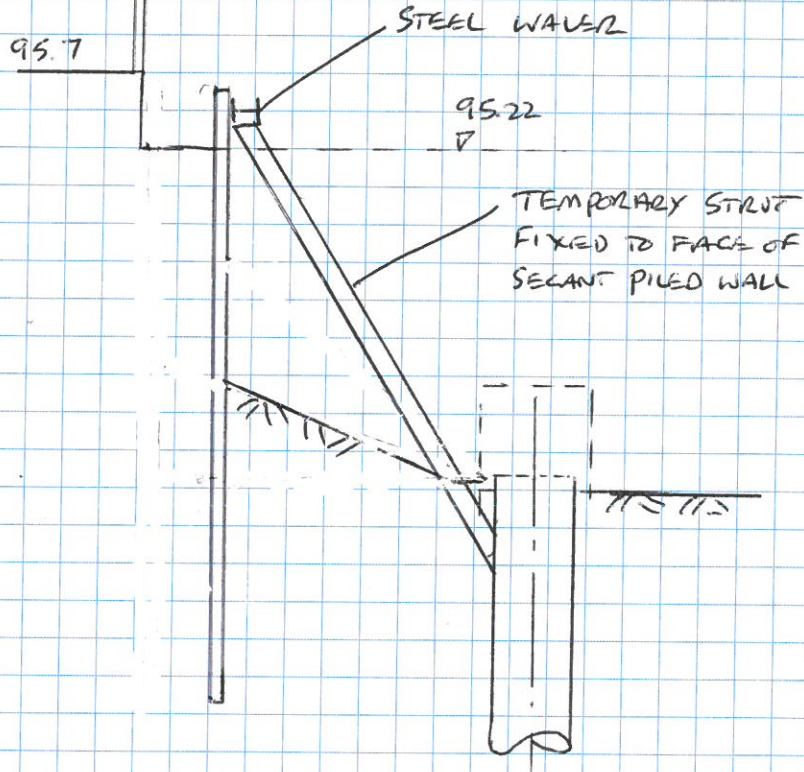




UNDERPINNING TO FRONT RETAINING WALL



UNDERPINNING TO REAR RETAINING WALL



SHORING TO REAR GARDEN