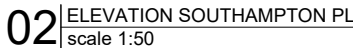
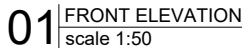
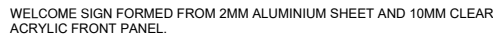


LH

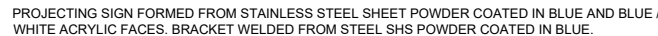
**LEWIS  
HICKEY**  
1 St. Bernard's Row  
Edinburgh  
EH4 1HW  
Tel: 0131 343 6222  
Fax: 0131 332 7332  
Email: [ed@lewis-hickey.com](mailto:ed@lewis-hickey.com)



- FASCIA FIXING METHOD - TO BE FIXED FLUSH BACK TO THE BUILDING FACADE USING SUITABLE FIXINGS FOR SITE CONDITIONS / REQUIREMENTS.
- JFACE AND HALO ILLUMINATED LETTERS MOUNTED ON TO FASCIA PANEL.
- LETTER RETURNS FROM 1.2MM MACHINE FORMED ALUMINIUM COIL TO A DEPTH OF 50MM, FINISHED TO MATCH BLUE PANTONE 281 C SATIN.
- LETTER FACES FROM 5MM FRET CUT OPAL 050 ACRYLIC SHEET WITH ROUTER CUT 1.5X2.5MM TOP-HAT PROFILE. FACES GLUED INTO LETTER RETURNS USING SUITABLE GLUE ADHESIVE.
- LETTER BACKS FROM 10MM OPAL 030 ACRYLIC SHEET. BACKS TO SIT INTERNALLY, FLUSH WITH REAR EDGE OF LETTER RETURN. BACKS SECURED THROUGH RETURNS USING SUITABLE LOW PROFILE SCREW FIXINGS WITH BLUE PAINTED OUT HEADS TO MATCH RETURNS. BACKS TO HOLD LED MODULES AND WIRING.
- ILLUMINATION VIA WHITE XO LED'S TO FACE AND HALO ILLUMINATE LETTERS ONLY. LED'S TO BE MOUNTED ON BOTH SIDES OF A 3MM CLEAR ACRYLIC CARRIER PANEL SCREWED BACK TO LETTER BACK.
- LETTERS FIXING METHOD TO FASCIA BY MEANS OF SUITABLE STAND-OFF LOCATOR FIXINGS TO STAND OFF BY 20MM.



- FACE TO CONSIST OF 10MM CLEAR ACRYLIC PANEL WITH CHAMFERED AND BUFFED EDGES. REVERSE APPLIED DIGITALLY PRINTED GRAPHIC (TO REAR OF FACE PANEL) CONSISTING OF REVERSE PRINTED DETAIL ON TO 3M CLEAR VIEW GRAPHIC LAM IJ 8150. BACKED WITH WHITE VINYL, BACKED WITH MATT BLACK VINYL TO REAR. APERTURE STENCIL CUT OUT TO LEAVE VIEWING WINDOW FOR INSERT.
- INSERT FROM 1MM THICK POLYCARBONATE WITH FACE APPLIED DIGITALLY PRINTED DETAIL (MID SECTION). CORNERS TO BE ROUNDED TO PREVENT DAMAGE/BINDING
- 20MM DEEP COATED BACKRAY FROM 2MM THICK ALUMINIUM. ALL POWDER COATED BLUE TO MATCH PANTONE 281 C SATIN BACKRAY. TO INCLUDE REINFORCE XING TO MOUNT INSERT TRACK. SECURITY BOLT TO TOP TURN TO PREVENT EASY REMOVAL OF INSERT TRACK AND SECURITY CLIP TO BOTTOM RETURN TO SECURE INSERT.



- BRACKET FROM 38X38X3MM STEEL SHS, MITRED, WELDED AND FINISHED TO MATCH BLUE PANTONE 281C SATIN.
- SUSPENSION FRAME FROM Ø25MM ALUMINIUM HANGING ARMS AND CONNECTORS, ALL FINISHED TO MATCH BLUE PANTONE 281 C SATIN.
- PROJECTOR RETURNS FROM 0.9MM FORMED DESCALED STAINLESS STEEL TO A DEPTH OF 120MM, ALL FINISHED TO MATCH BLUE PANTONE 281 C SATIN.
- FACES FROM 5MM FRET CUT DAY / NIGHT (BLUE / WHITE) ACRYLIC SHEET. FACES RETAINED USING SMALL FACE TRIM FINISHED BLUE.
- ILLUMINATION VIA WHITE LED'S TO FACE ILLUMINATE ONLY.
- DAY / NIGHT ACRYLIC ILLUMINATES BLUE IN DAYLIGHT AND WHITE AT NIGHT.

**TENURE:** SHORT LEASEHOLD  
**LISTED BUILDING:** YES, GRADE II  
**BUILDING REGS APP:** TBC

rev	description	date
B	RBS Mark up	14.05.19
A	Heather trip added	09.05.19



project

RBS LONDON HOLBORN  
127-128 HIGH HOLBORN  
LONDON, WC1V 6PQ

title  
ELEVATION 2&3  
PROPOSED  
T3 E&W

scale	1:50@A1, 1:100@A3
-------	-------------------

drn	MD	chk	RH	app
date	06.03.19	date	06.03.19	date

consultants' drawing number

E6558-GA-E2-E

brand

rbs drawing number

rev.

B