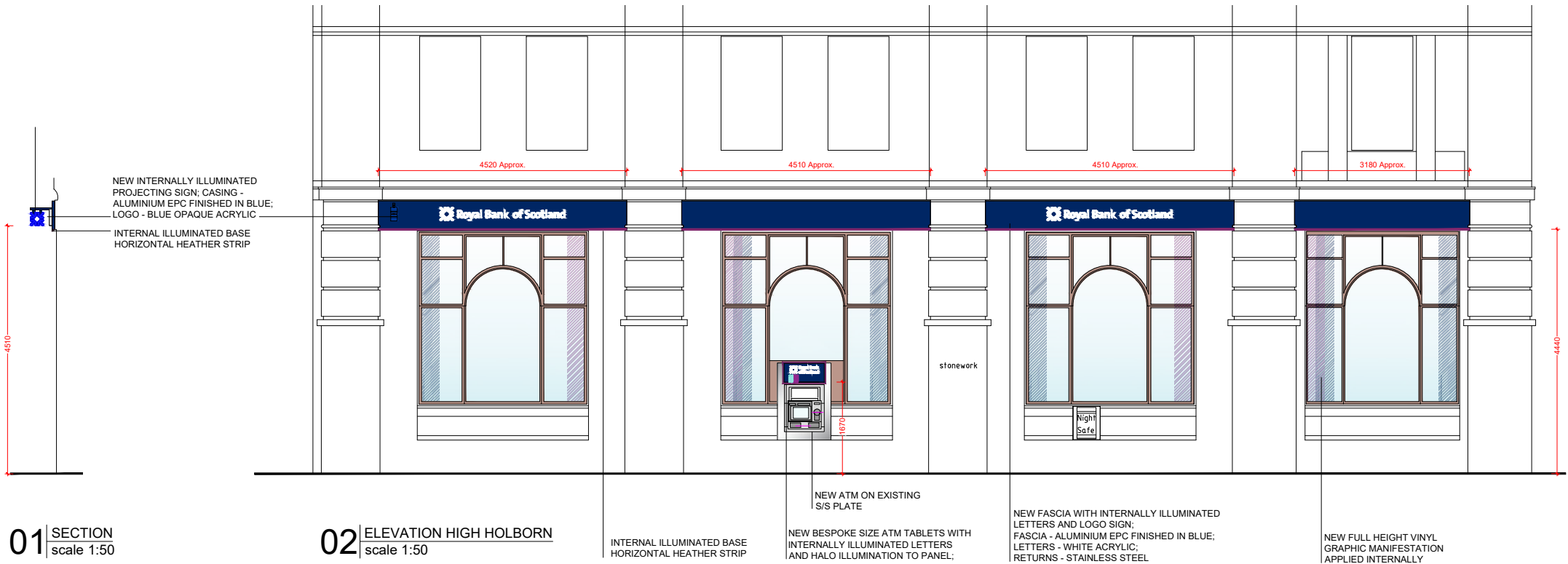


Notes:
This drawing is the copyright and property of RBSG.
It must not be copied or published without written consent.
Only scale from this drawing for planning purposes.



LEWIS AND HICKEY
1 St. Bernard's Row
Edinburgh
EH4 1HW
Tel: 0131 343 6222
Fax: 0131 332 7332
Email: info@lewisandhickey.com



01 SECTION
scale 1:50

02 ELEVATION HIGH HOLBORN
scale 1:50



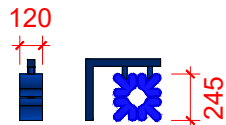
FASCIA PANEL FORMED FROM 3MM FOLDED ALUMINIUM TO A DEPTH OF 60MM, COMPLETE WITH FULL ALUMINIUM BACK TRAY, ALL FINISHED TO MATCH BLUE PANTONE 281 C SATIN. FACE PANELS SECURED TO BACK TRAY THROUGH RETURNS USING MS DOME HEAD SCREW FIXINGS AND MS RIVNUTS. ALL FIXINGS TO HAVE PAINTED OUT HEADS TO MATCH PANEL. INCLUDES INTERNAL ILLUMINATED BASE HORIZONTAL HEATHER STRIP.

- FASCIA FIXING METHOD - TO BE FIXED FLUSH BACK TO THE BUILDING FACADE USING SUITABLE FIXINGS FOR SITE CONDITIONS / REQUIREMENTS.
- FACE AND HALO ILLUMINATED LETTERS MOUNTED ON TO FASCIA PANEL.
- LETTER RETURNS FROM 1.2MM MACHINE FORMED ALUMINIUM COIL TO A DEPTH OF 50MM, FINISHED TO MATCH BLUE PANTONE 281 C SATIN.
- LETTER FACES FROM 5MM FRET CUT OPAL 050 ACRYLIC SHEET WITH ROUTER CUT 1.5X2.5MM TOP-HAT PROFILE. FACES GLUED INTO LETTER RETURNS USING SUITABLE GLUE ADHESIVE.
- LETTER BACKS FROM 10MM OPAL 030 ACRYLIC SHEET. BACKS TO SIT INTERNALLY, FLUSH WITH REAR EDGE OF LETTER RETURN. BACKS SECURED THROUGH RETURNS USING SUITABLE LOW PROFILE SCREW FIXINGS WITH BLUE PAINTED OUT HEADS TO MATCH RETURNS. BACKS TO HOLD LED MODULES AND WIRING.
- ILLUMINATION VIA WHITE XO LED'S TO FACE AND HALO ILLUMINATE LETTERS ONLY. LED'S TO BE MOUNTED ON BOTH SIDES OF A 3MM CLEAR ACRYLIC CARRIER PANEL SCREWED BACK TO LETTER BACK.
- LETTERS FIXING METHOD TO FASCIA BY MEANS OF SUITABLE STAND-OFF LOCATOR FIXINGS TO STAND OFF BY 20MM.



EXTERNAL ATM SURROUND FORMED FROM 3MM ALUMINIUM SHEET AND 2 X 5MM CLEAR ACRYLIC FRONT PANELS.

- FACE TO CONSIST OF 2NO. PANELS FROM 5MM FRET CUT CLEAR ACRYLIC SHEET. OUTER PANEL TO HAVE 2X2MM BEVELLED EDGES TO ALL SIDES AND BUFF POLISHED FINISH. FACE PANEL TO THEN BE REVERSE SCREEN PRINTED WITH OPAQUE BLUE PANTONE 281C BACKGROUND, VERTICAL TWILL DESIGN AND TRANSLUCENT WHITE LOGO DETAIL. REAR PANEL TO HAVE BUFF POLISHED FINISH AND COME COMPLETE WITH DRILLED HOLES TO TAKE CSK FIXINGS. PANELS TO BE BONDED TOGETHER WITH CSK FIXINGS IN PLACE. BONDED ACRYLIC PANELS TO BE MOUNTED TO FACE OF ALUMINIUM LID WITH DOUBLE SIDED VHB TAPE AND PROTRUDING CSK FIXINGS USING WASHERS AND NUTS FROM REAR OF LID.
- LID FROM 3MM FOLDED ALUMINIUM TO A DEPTH OF 25MM, ALL FINISHED TO MATCH PANTONE 281 C SATIN. FACE FRET CUT OUT FOR ATM APERTURE AND LOGOTYPE.
- BACKTRAY FROM 3MM FOLDED ALUMINIUM TO A DEPTH OF 30MM, ALL FINISHED TO MATCH PANTONE 281 C SATIN. ILLUMINATION VIA WHITE XO LED'S TO FACE ILLUMINATE LOGOTYPE WITH HEATHER HALO ILLUMINATION.
- FIXING METHOD TO BE WALL MOUNTED THROUGH BACK TRAY USING SUITABLE FIXINGS FOR SITE CONDITIONS/REQUIREMENTS.
- HEATHER HALO ILLUMINATION TO ATM SURROUND




PROJECTING SIGN FORMED FROM STAINLESS STEEL SHEET POWDER COATED IN BLUE AND BLUE / WHITE ACRYLIC FACES. BRACKET WELDED FROM STEEL SHS POWDER COATED IN BLUE.

- BRACKET FROM 38X38X3MM STEEL SHS, MITRED, WELDED AND FINISHED TO MATCH BLUE PANTONE 281C SATIN.
- SUSPENSION FRAME FROM Ø25MM ALUMINIUM HANGING ARMS AND CONNECTORS, ALL FINISHED TO MATCH BLUE PANTONE 281 C SATIN.
- PROJECTOR RETURNS FROM 0.9MM FORMED DESCALED STAINLESS STEEL TO A DEPTH OF 120MM, ALL FINISHED TO MATCH BLUE PANTONE 281 C SATIN.
- FACES FROM 5MM FRET CUT DAY / NIGHT (BLUE / WHITE) ACRYLIC SHEET. FACES RETAINED USING SMALL FACE TRIM FINISHED BLUE.
- ILLUMINATION VIA WHITE LED'S TO FACE ILLUMINATE ONLY.
- DAY / NIGHT ACRYLIC ILLUMINATES BLUE IN DAYLIGHT AND WHITE AT NIGHT.

TENURE: SHORT LEASEHOLD
LISTED BUILDING: YES, GRADE II
BUILDING REGS APP: TBC

rev	description	date
B	RBS Mark up	14.05.19
A	Heather strip added	09.05.19



project				RBS LONDON HOLBORN 127-128 HIGH HOLBORN LONDON, WC1V 6PQ							
title								ELEVATION 1 PROPOSED T3 E&W			
scale								1:50@A1, 1:100@A3			
dm		MD		chk		RH		app			
date		06.03.19		date		06.03.19		date			
consultants' drawing number								brand			
E6558-GA-E1											
rbs drawing number								rev.		B	