



Project

St Giles Circus

Title

Planning Condition Discharge - Facing Brickwork

Client

Consolidated Developments

Date

6th June 2018



Project name	Orms project number	Project team code	File
ST GILES CIRCUS	1793	SGC	1793 SGC Planning Condition Discharge

Revision	Date	Description	Status	Created	Checked
PL01	06.06.19	Planning Conditions Discharge - Materials	PL - PLANNING	RV	AMc
PL02	07.06.19	Planning Conditions Discharge - Materials	PL - PLANNING	RV	AMc

Consent 2012 / 6858 / P Condition No 13

Property: 17 - 21 Denmark Place





Brickwork

Consent 2012 / 6858 / P

Condition No 13

Brickwork





17 - 21 Denmark Place North - Elevation Mark-up

-  **Brick Type A1, BRK - A1**
White Glazed // English Bond
-  **Brick Type C1, BRK-C1**
Red // English Bond
-  **Brick Type D2, BRK-D2**
Black // Flemish Bond
-  **Brick Type G2, BRK-G2**
Black Glazed// Flemish Bond



Brickwork

17 - 21 Denmark Place South - Elevation Mark-up

-  **Brick Type A1, BRK - A1**
White Glazed // English Bond
-  **Brick Type C1, BRK-C1**
Red // English Bond
-  **Brick Type D2, BRK-D2**
Black // Flemish Bond
-  **Brick Type G2, BRK-G2**
Black Glazed// Flemish Bond



Brick Type A1

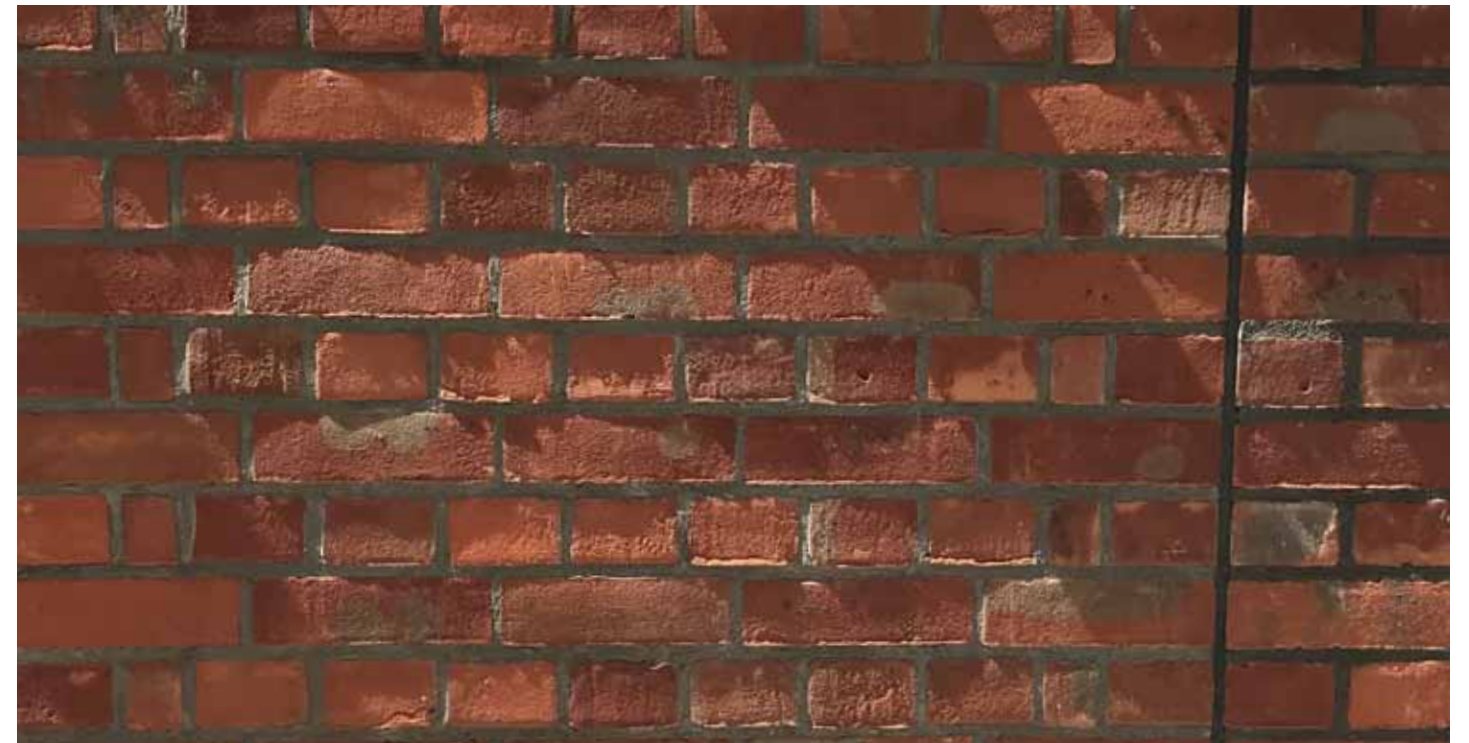
White Glazed // English Bond



Brick sample panel

Brick Type C1

Red Brick // English Bond



Brick sample panel

Brick Type D2

Black Brick // Flemish Bond



Brick sample panel

Brick Type G2

Black Glazed // Flemish Bond



Brick sample panel








Consent 2012 / 6858 / P

Condition No 14

Property: York & Clifton Mansions

Brickwork

York & Clifton Mansions - Elevation Mark-up

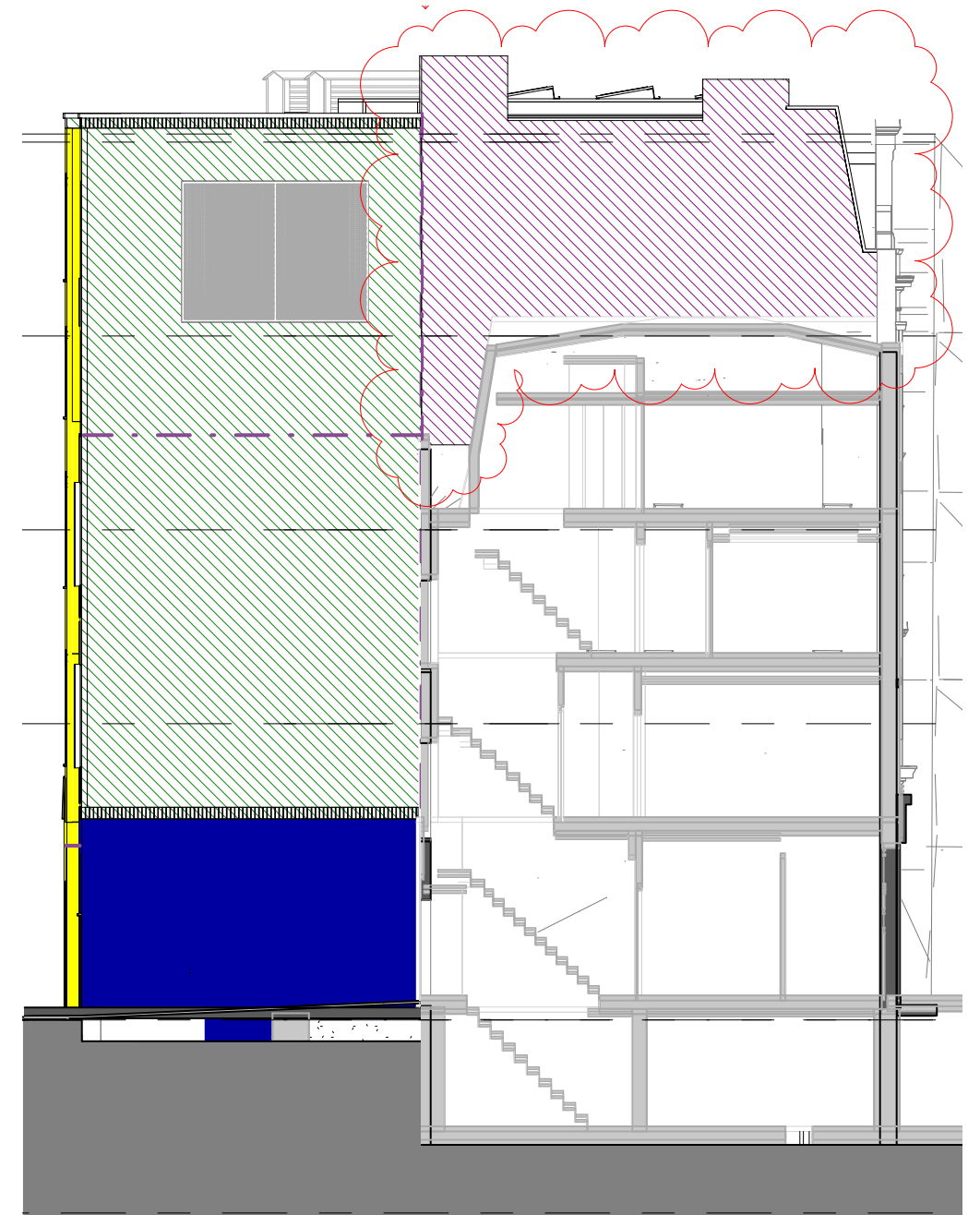
-  **Brick Type A2, BRK-A2**
White Glazed // Flemish Bond
-  **Brick Type B2, BRK-B2**
London Stock // Flemish Bond
-  **Brick Type B3, BRK-B3**
London Stock // Open Jointed Flemish Bond
-  **Brick Type B4, BRK-B4**
London Stock // Projecting Headers Flemish Bond
-  **Brick Type B5, BRK-B5**
London Stock // Recessed Header Flemish Bond
-  **Brick Type D2, BRK-D2**
Black Brick // Flemish Bond
-  **Brick Type D3, BRK-D3**
Black Brick // Open Jointed Flemish Bond



Brickwork

York & Clifton Mansions - Elevation Mark-up

- Brick Type A2, BRK-A2**
White Glazed // Flemish Bond
- Brick Type B2, BRK-B2**
London Stock // Flemish Bond
- Brick Type B3, BRK-B3**
London Stock // Open Jointed Flemish Bond
- Brick Type B4, BRK-B4**
London Stock // Projecting Headers Flemish Bond
- Brick Type B5, BRK-B5**
London Stock // Recessed Header Flemish Bond
- Brick Type D2, BRK-D2**
Black Brick // Flemish Bond
- Brick Type D3, BRK-D3**
Black Brick // Open Jointed Flemish Bond



Brick Type A2

White Glazed // Flemish Bond



Brick sample panel

Brick Type B2

London Stock // Flemish Bond



Brick sample panel

Brick Type B3

London Stock // Open Jointed Flemish Bond



Brick sample panel

Brick Type B4

London Stock // Projecting Header Flemish Bond



Brick sample panel

Brick Type B5

London Stock // Recessed Header Flemish Bond



Brick sample panel

Brick Type D2

Black Brick // Flemish Bond



Brick sample panel

Brick Type D3

Black Brick // Open Jointed Flemish Bond



Brick sample panel

Appendices

Technical Data Sheets

Brick Types A1 & A2



PRODUCT TECHNICAL INFORMATION SHEET

PRODUCT NAME : GLAZED – WHITE
REF. CODE : 11029110 (PANNINGEN)
DESCRIPTION : GLAZED
MANUFACTURE : EXTRUSION
APPEARANCE : SMOOTH
CONFIGURATION : PERFORATED – 20 HOLES VERTICAL

WORK SIZE* : 215 x 102 x 65mm

GUARANTEED PROPERTIES EN771-1 : 2003

COMPRESSIVE STRENGTH : MIN. 50N/mm²
WATER ABSORPTION : MAX. 2%
DURABILITY DESIGNATION : F2
ACTIVE SOLUBLE SALTS : S2
SIZE TOLERANCE * (/ RANGE) : T2 – R2
GROSS DENSITY (Tolerance) : 1700Kg/m³ (D1)
NET DENSITY (Tolerance) : 1800Kg/m³ (D1)
THERMAL CONDUCTIVITY ($\lambda_{10,dry}$) : P=90% 0.55 W/m.K
INITIAL RATE OF WATER ABS. : 0.1/m².minute
BOND STRENGTH (General Mortar) : 0.15 N/mm² (fixed value)
REACTION TO FIRE : Class A1
WATER VAPOUR PERMEABILITY (μ) : 5/10 (tabulated)
PACK QUANTITY : 384 no
PACK SIZE (APPROX. mm) : 860 x 845 x 820 H
TYPICAL PACK WEIGHT : 931 Kg

ISSUE : JANUARY 2012



Brick Type B2, B3, B4 & B5



Bronsgroen

Cream Soft Mud Creased Multi Brick



[Request sample](#)

[Add to my favourites](#)

Technical information

Collection Point / Location	Hull & Purfleet
Size tolerances, mean and range	T2 / R1
Durability EN 771-1	F2
Active soluble salts EN 771-1	S2
Compressive strength (N/mm ²) EN 771-1	>=25
Water Absorption (%) EN 771-1	<=12
Pack quantity	552
Configuration	Frogged
Dimensions	215 x 102.5 x 65

Brick Type C1

Heritage Red Blend



Product Information

Ibstock Code:	4986
Type:	Stock
Facing Description:	Sandfaced
Dry Brick Weight (kg):	2.2kg
Pack Quantity:	500
Packaging (standard):	Banded (plastic) & Shrinkwrapped
Factory:	Ellistown

Technical Specification (to BS EN 771-1)

Brick Dimensions (L x W x H mm):	215x102x65
Size Tolerances Mean & Range:	T2 R1
Configuration:	Single Frog
Voids (%):	8-13
Compressive Strength (N/mm ²):	20
Active Soluble Salts:	S2
Water Absorption (% weight):	19
Durability:	F2
Gross Dry Density (Sound Insulation) (Kg/m ³):	1530
Equivalent Thermal Conductivity "K" value 5% Exposed:	Refer to Ibstock
Initial Rate of Absorption (Suction Rate) (Kg/m ² /min):	Refer to Ibstock
EAN:	5036335035245

09/05/2019

Brick Types D2 & D3

Himley Ebony Black



Product Information

Ibstock Code:	0354
Type:	Wirecut
Facing Description:	Dragfaced
Dry Brick Weight (kg):	2.3kg
Pack Quantity:	316
Packaging (standard):	Banded (plastic)
Factory:	Aldridge

Technical Specification (to BS EN 771-1)

Brick Dimensions (L x W x H mm):	215x102x65
Size Tolerances Mean & Range:	T2 R1
Configuration:	Vertically Perforated
Voids (%):	23-28
Compressive Strength (N/mm ²):	40
Active Soluble Salts:	S2
Water Absorption (% weight):	12
Durability:	F2
Gross Dry Density (Sound Insulation) (Kg/m ³):	1500
Equivalent Thermal Conductivity "K" value 5% Exposed:	Refer to Ibstock
Initial Rate of Absorption (Suction Rate) (Kg/m ² /min):	Refer to Ibstock
EAN:	5036335030400

09/05/2019

Brick Type G2



PRODUCT TECHNICAL INFORMATION SHEET

PRODUCT NAME : GLAZED – BLACK
REF. CODE : 11029610 (PANNINGEN)
DESCRIPTION : GLAZED
MANUFACTURE : EXTRUSION
APPEARANCE : SMOOTH
CONFIGURATION : PERFORATED – 20 HOLES VERTICAL

WORK SIZE* : 215 x 102 x 65mm

GUARANTEED PROPERTIES EN771-1 : 2003

COMPRESSIVE STRENGTH : MIN. 50N/mm²
WATER ABSORPTION : MAX. 2%
DURABILITY DESIGNATION : F2
ACTIVE SOLUBLE SALTS : S2
SIZE TOLERANCE * (/ RANGE) : T2 – R2
GROSS DENSITY (Tolerance) : 1700Kg/m³ (D1)
NET DENSITY (Tolerance) : 1800Kg/m³ (D1)
THERMAL CONDUCTIVITY ($\lambda_{10,dry}$) : P=90% 0.55 W/m.K
INITIAL RATE OF WATER ABS. : 0.1/m².minute
BOND STRENGTH (General Mortar) : 0.15 N/mm² (fixed value)
REACTION TO FIRE : Class A1
WATER VAPOUR PERMEABILITY (μ) : 5/10 (tabulated)
PACK QUANTITY : 384 no
PACK SIZE (APPROX. mm) : 860 x 845 x 820 H
TYPICAL PACK WEIGHT : 931 Kg

ISSUE : JANUARY 2012



