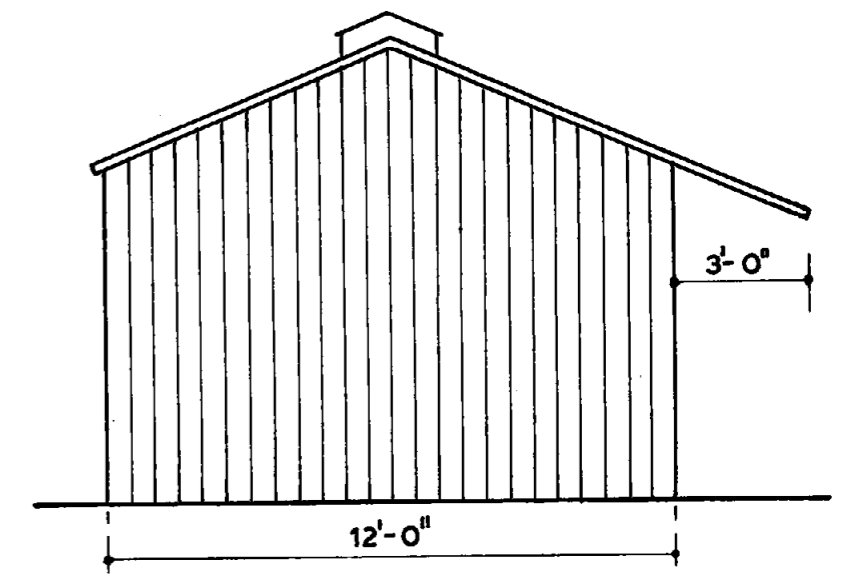
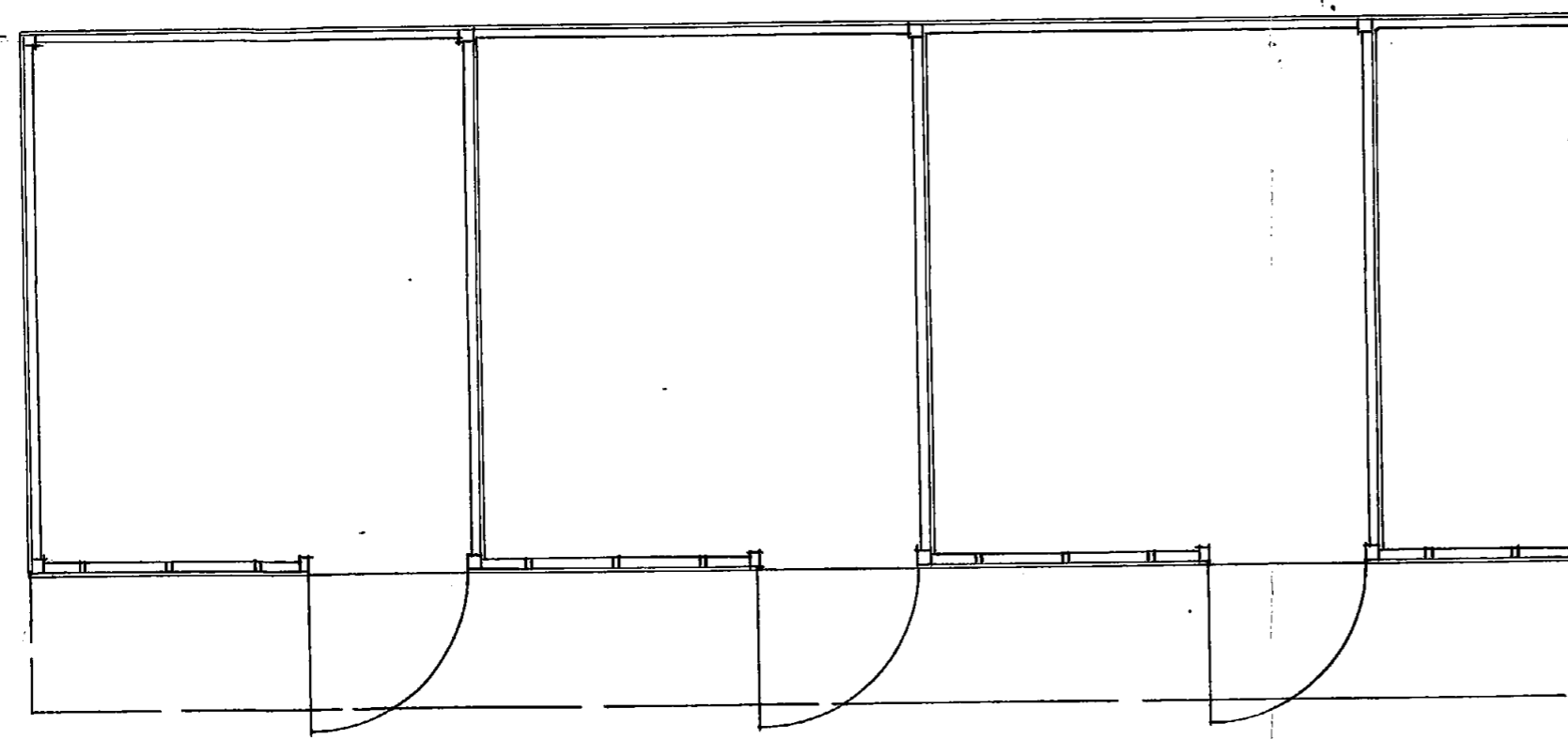


FRONT ELEVATION



END ELEVATION



PLAN

NOTES

- LENGTH** - in multiples of 10'-0" & 12'-0"
- WIDTH** - 12'-0"
- HEIGHT** - to eaves excluding foundations 7'-0"
- CLADDING** - 7/8" softwood or 1" western red clear cedar.
- ROOF** - 3/4" p.t.g. boards covered with 2 ply felt.
- DOORS** - Stable type fitted with crooks and band hinges plus galvanised pad bolts.
- WINDOWS** - 4'-0" x 2'-6" transom type, glazed and painted white fitted with iron bars inside.
- CANOPY** - extended on front of roof 3'-0"

LONDON BOROUGH OF CAMDEN
 PLANS APPROVED
 25 APR 1973
 ON BEHALF OF THE COUNCIL

Scale: 1/4" to 1'

B
W.
FE
BA

Main Distributor for the South of England

R. H. Sales Agency

DENBARN FARMHOUSE
 CUDHAM LANE NORTH, GREEN STREET GREEN
 ORPINGTON, KENT

Tel: FARNBOROUGH (Kent) 51240

58 / 4 / B / 16021

S
IE,