

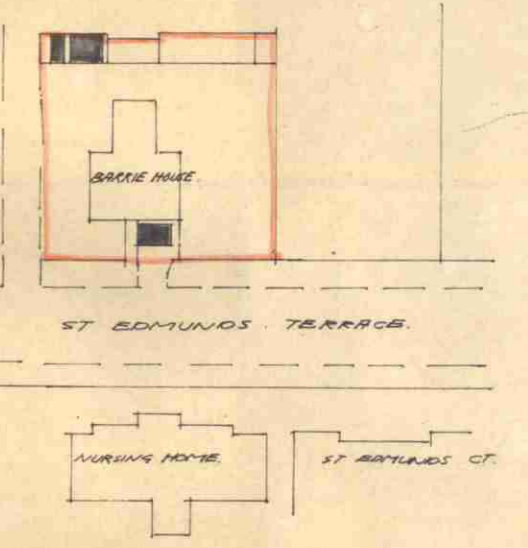
GROUND FLOOR PLAN

ST EDMUNDS TERRACE

PROPOSED NEW EXTERNAL ALTERATIONS AT "BARRIE HOUSE" ST EDMUNDS TERRACE ST JOHN'S WOOD
 Drawn M. Herman 4, Riverside Col Redbridge Essex • Tel 590-8145 • Scale 1/8" = 1'0" • Date March 75 • Revision 11 • Drawing Number 429

FILE COPY
 REF:

LONDON BOROUGH OF CAMDEN
 PLANS
 - 3 JUN 1975
 ON BEHALF OF THE COUNCIL



SITE PLAN 1:1250

CTP/55/4/B/180469