

Design

- 7.1 Good design is essential to creating places, buildings, or spaces that work well for everyone, look good, last well and will adapt to the needs of future generations. The National Planning Policy Framework establishes that planning should always seek to secure high quality design and that good design is indivisible from good planning.

Policy D1 Design

The Council will seek to secure high quality design in development. The Council will require that development:

- a. respects local context and character;
- b. preserves or enhances the historic environment and heritage assets in accordance with “Policy D2 Heritage”;
- c. is sustainable in design and construction, incorporating best practice in resource management and climate change mitigation and adaptation;
- d. is of sustainable and durable construction and adaptable to different activities and land uses;
- e. comprises details and materials that are of high quality and complement the local character;
- f. integrates well with the surrounding streets and open spaces, improving movement through the site and wider area with direct, accessible and easily recognisable routes and contributes positively to the street frontage;
- g. is inclusive and accessible for all;
- h. promotes health;
- i. is secure and designed to minimise crime and antisocial behaviour;
- j. responds to natural features and preserves gardens and other open space;
- k. incorporates high quality landscape design (including public art, where appropriate) and maximises opportunities for greening for example through planting of trees and other soft landscaping,
- l. incorporates outdoor amenity space;
- m. preserves strategic and local views;
- n. for housing, provides a high standard of accommodation; and
- o. carefully integrates building services equipment.

The Council will resist development of poor design that fails to take the opportunities available for improving the character and quality of an area and the way it functions.

Tall buildings

All of Camden is considered sensitive to the development of tall buildings. Tall buildings in Camden will be assessed against the design criteria set out above and we will also give particular attention to:

- p. how the building relates to its surroundings, both in terms of how the base of the building fits in with the streetscape and how the top of a tall building affects the skyline;
- q. the historic context of the building's surroundings;
- r. the relationship between the building and hills and views;
- s. the degree to which the building overshadows public spaces, especially open spaces and watercourses; and
- t. the contribution a building makes to pedestrian permeability and improved public accessibility.

In addition to these design considerations tall buildings will be assessed against a range of other relevant policies concerning amenity, mixed use and sustainability.

Public art

The Council will only permit development for artworks, statues or memorials where they protect and enhance the local character and historic environment and contribute to a harmonious and balanced landscape design.

Excellence in design

The Council expects excellence in architecture and design. We will seek to ensure that the significant growth planned for under "Policy G1 Delivery and location of growth" will be provided through high quality contextual design.

Local context and character

- 7.2 The Council will require all developments, including alterations and extensions to existing buildings, to be of the highest standard of design and will expect developments to consider:
- character, setting, context and the form and scale of neighbouring buildings;
 - the character and proportions of the existing building, where alterations and extensions are proposed;
 - the prevailing pattern, density and scale of surrounding development;
 - the impact on existing rhythms, symmetries and uniformities in the townscape;
 - the composition of elevations;
 - the suitability of the proposed design to its intended use;
 - inclusive design and accessibility;
 - its contribution to public realm and its impact on views and vistas; and
 - the wider historic environment and buildings, spaces and features of local historic value.
- 7.3 The Council will welcome high quality contemporary design which responds to its context, however there are some places of homogenous architectural style (for example Georgian Squares) where it is important to retain it.
- 7.4 Good design takes account of its surroundings and preserves what is distinctive and valued about the local area. Careful consideration of the characteristics of a site, features of local distinctiveness and the wider context is needed in order to achieve high quality development which integrates into its surroundings. Character is about people and communities as well as the physical components.

How places have evolved historically and the functions they support are key to understanding character. It is important to understand how places are perceived, experienced and valued by all sections of the community. People may value places for different reasons, often reflecting the services or benefits they provide for them. In addition, memory and association are also a component of how people understand a place. All of these values and experiences are part of understanding the character of a place. Planning applications should include a Design and Access Statement which assesses how the development has been informed by and responds to local context and character.

- 7.5 Design should respond creatively to its site and its context including the pattern of built form and urban grain, open spaces, gardens and streets in the surrounding area. Where townscape is particularly uniform attention should be paid to responding closely to the prevailing scale, form and proportions and materials.
- 7.6 The Council has two sets of documents which describe the character and appearance of areas and set out how we will preserve or enhance them. Each conservation area has a Conservation Area Statement or Appraisal and Management Strategy. These detailed documents have been developed with the relevant Conservation Area Advisory Committee and are adopted supplementary planning documents. For areas outside of conservation areas the Council commissioned the Camden Character Study to identify and record their character. This is not a formal supplementary planning document. These documents can help developers to inform their understanding of the specific character of the area in which their proposals are located. "Policy D2 Heritage" provides further guidance on the preservation and enhancement of the historic environment. When assessing design, we will also take into account guidance contained within supplementary planning document Camden Planning Guidance on design. For areas where Neighbourhood Plans are being prepared, these documents will form a valuable source of information on the character of the local area.

Sustainable design and durability

- 7.7 The Council expects development to be sustainable in design and construction. Development should be consistent with the policies set out in section 8 of this plan on sustainability and also consistent with Camden Planning Guidance on sustainability.
- 7.8 Design should be durable in construction and where appropriate should be flexible and adaptable for a range of uses over time, a quality known as robustness. Robustness is influenced by factors including the size and shape of rooms, points of access and the depth of floorplates. The overall quality of a building is also a consideration as buildings with character and charm are more likely to be retained and adapted.

Details and materials

- 7.9 Architectural detailing should be carefully integrated into a building. In new development, detailing should be carefully considered so that it conveys quality of design and creates an attractive and interesting building. Architectural features on existing buildings should be retained wherever possible, as their

loss can harm the appearance of a building by eroding its detailing. The insensitive replacement of windows and doors can spoil the appearance of buildings and can be particularly damaging if the building forms part of a uniform group.

- 7.10 Schemes should incorporate materials of a high quality. The durability and visual attractiveness of materials will be carefully considered along with their texture, colour, tone and compatibility with existing materials. Alterations and extensions should be carried out in materials that match the original or neighbouring buildings, or, where appropriate, in materials that complement or enhance a building or area.

Street frontages and legibility

- 7.11 Building facades should be designed to provide active frontages and respond positively to the street. Active frontages are building facades that allow people on the street to see inside the building. A more active type of frontage is one where the use opens out to the street, like a shop with a window display and entrance, or a use like a café or restaurant with outdoor dining. Active frontages add interest and vitality to public spaces. Views into buildings provide interest to passers-by and views out of buildings provide safety through passive surveillance or 'eyes on the street'. Positive factors for frontages are entrances, shop fronts and windows. Negative factors include long blank facades, high boundary walls, solid roller shutters and service entrances and yards.
- 7.12 Buildings and spaces should also allow people to easily navigate their way around an area – a quality known as legibility. Designs should provide recognisable routes and be easy to understand. Buildings and spaces should be permeable by providing clear and direct routes between places. Routes should be direct, safe and attractive for walking and cycling.
- 7.13 Ground floors in new developments should have a storey height appropriate to their use. In mixed use schemes where a commercial use is provided on the ground floor this should typically have a more generous storey height (of approximately 4.5m). Further information on the design of retail spaces is in "Policy TC2 Camden's centres and other shopping areas".

Access

- 7.14 Good access benefits everyone. The Council requires new buildings and spaces to be inclusive and accessible to all. As accessibility is influenced by perceptions as well as physical factors, buildings should also be designed to appear, as well as be, fully accessible. The Council will require Design and Access Statements for developments to show how the principles of inclusive design, ensuring access for all, have been integrated into the proposed development and how inclusion will be maintained and managed.
- 7.15 Making roads and pavements and the spaces between buildings fully accessible is as important as making the buildings themselves accessible. The Council will seek improvements for all pedestrians to ensure good quality access and circulation arrangements, including improvements to existing routes and footways. The Camden Streetscape Design Manual and our supplementary planning documents Camden Planning Guidance on design and Camden Planning Guidance on amenity provide more detailed information on this issue.

- 7.16 Any adaptation of existing buildings must respond to access needs whilst ensuring that alterations are sympathetic to the building's character and appearance. Please refer to "Policy C6 Access for all" for the Council's policies on access and to "Policy D2 Heritage" for the policy on providing access to listed buildings.

Health

- 7.17 The way an area is designed and managed can have a significant impact on people's quality of life, health and wellbeing. Planning has a key role in promoting good physical and mental health by creating streets, spaces and buildings which allow and encourage healthy lifestyles. Architecture and urban design can affect human health through the quality and design of buildings and spaces, access to open space and nature, air quality, noise, opportunities for active transport such as walking and cycling, crime reduction and social cohesion. The Council will require applicants to consider how development will contribute to improving health. Please see "Policy C1 Health and wellbeing" and Sport England's Active Design Guidance for further information on the principles of Active Design.

Secure design and crime prevention through urban design

- 7.18 Design should create safe and attractive places and be designed to prevent crime and antisocial behaviour. The impacts of proposals on crime and community safety should be considered and addressed from an early stage in the design process to prevent the need for reactive security measures. Access and movement routes, the layout of buildings, overlooking and active frontages, lighting, the clear delineation of spaces and ownership and the creation of activity all play a role in designing out crime. The Council will seek to maintain good accessibility in urban areas to foster flows of movement which produce vitality and natural surveillance and in doing so increase safety. Gating as a solution to crime and antisocial behaviour problems will be resisted unless there are exceptional circumstances. Further details are set out in supplementary planning document Camden Planning Guidance on design and in the document Safer Places – The Planning System and Crime Prevention (ODPM April 2004). Please refer to "Policy C5 Safety and security" for further information.

Responding to natural features and preserving gardens and open space

- 7.19 New developments should respond to the natural assets of a site and its surroundings, such as slopes and height differences, trees and other vegetation. Extensions and new developments should not harm existing natural habitats, including in private gardens. "Policy A3 Biodiversity" sets out the Council's policy on nature conservation, protecting trees and biodiversity.
- 7.20 Development within rear gardens and other undeveloped areas can often have a significant impact upon the amenity and character of an area. The Council will resist development that occupies an excessive part of a garden and where there is a loss of garden space which contributes to the character of the townscape.
- 7.21 The Council will resist development which fails to preserve or is likely to damage trees on a site which make a significant contribution to the character and amenity of an area. Where appropriate the Council will seek to ensure that

developments make adequate provision for the planting and growth to maturity of large trees.

Landscape design and greening

- 7.22 The Council will expect development schemes to provide a high standard of landscape design and encourages the development of green and brown roofs and walls. The design of new hard and soft landscaping should be contextual and consider access requirements. Where appropriate, the Council will expect planting plans to be accompanied by a maintenance schedule. Detail on our approach to green infrastructure and landscape design is set out in Camden Planning Guidance on design and Camden Planning Guidance on sustainability supplementary planning documents.

Amenity space

- 7.23 Private outdoor amenity space including gardens, balconies and roof terraces, can add significantly to resident's quality of life and applicants are therefore encouraged to explore all options for the provision of new private outdoor space. Please refer to "Policy A2 Open space" for the Council's approach to ensuring that new open space is provided in development. The Council also requires that the residential amenity of neighbours be considered in accordance with "Policy A1 Managing the impact of development".

Public art

- 7.24 The Council encourages provision of high quality public art in development where appropriate. Public art can help to create a distinctive character to places and spaces. As well as adding visual interest it can influence the use of a space, encouraging or discouraging particular uses, or it can act as a focal point to provide directions. Public art can take many forms and occupy sites and spaces that span a range of scales and of varying character. It may take the more traditional form of a sculpture or other artwork in a public space but could also be conceived as a garden, the façade of a building or a lighting installation. Public art should be designed to be an integral part of a new development.
- 7.25 In assessing applications for artworks, statues and memorials the Council will also take into consideration the matters set out in the supplementary planning

document Camden Planning Guidance on design, including:

- the number of artworks, statues, or memorials already in the area;
- whether the proposal has contextual and historic connections to the site; and
- whether the proposal meets the Council's corporate guidance on artworks, statues and memorials.

Views

- 7.26 A number of London's most famous and valued views originate in, or extend into, Camden. These are:
- views of St Paul's Cathedral from Kenwood, Parliament Hill and Primrose Hill;
 - views of the Palace of Westminster from Primrose and Parliament Hills; and
 - background views of St Paul's from Greenwich and Blackheath.
- 7.27 The Council will protect these views in accordance with London-wide policy and will resist proposals that would harm them. Where existing buildings that affect a view are redeveloped it is expected that any replacement building will be of a height that does not harm the view. The current framework for protecting these views is set by the London Plan (policies 7.11 and 7.12) and the Mayor's London View Management Framework supplementary planning guidance.
- 7.28 The Council will also consider the impact of a scheme, in terms of the townscape, landscape and skyline, on the whole extent of a view ('panorama'), not just the area in the view corridor. Developments should not detract from the panorama as a whole and should fit in with the prevailing pattern of buildings and spaces. They should seek to avoid buildings that tightly define the edges of the viewing corridors and not create a crowding effect around the landmark.
- 7.29 The Council will also seek to protect locally important views that contribute to the interest and character of the borough. These include:
- views of and from large public parks and open spaces, such as Hampstead Heath, Kenwood Estate, Primrose Hill and Regent's Park, including panoramic views, as well as views of London Squares and historic parks and gardens;
 - views relating to Regent's Canal;
 - views into and from conservation areas; and
 - views of listed and landmark buildings, monuments and statues (for example, Centrepoint, St Stephen's, Rosslyn Hill and St George's, Bloomsbury).
- 7.30 The Council will seek to ensure that development is compatible with such views in terms of setting, scale and massing and will resist proposals that we consider would cause harm to them. Development will not generally be acceptable if it obstructs important views or skylines, appears too close or too high in relation to a landmark or impairs outlines that form part of the view. Further guidance on important local views is set out in our supplementary planning documents, for example in individual conservation area statements, appraisals and management strategies.
- 7.31 The Council recognises that neighbouring boroughs have identified views for protection in supplementary planning documents and that development on some sites within Camden could affect these views. The Council will take into consideration these protected views of neighbouring authorities when deciding

planning applications.

Design of housing

7.32 All residential developments are required to be designed and built to create high quality homes. The Council will seek to ensure that residential development, both new build and change of use:

- is self-contained and has its own secure private entrance;
- has good ceiling heights and room sizes;
- is dual aspect except in exceptional circumstances;
- has good natural light and ventilation;
- has good insulation from noise and vibration;
- has a permanent partition between eating and sleeping areas (studio flats are acceptable where they provide adequate space to separate activities);
- incorporates adequate storage space;
- incorporates outdoor amenity space including balconies or terraces; and
- is accessible and adaptable for a range of occupiers.

7.33 New dwellings and conversions to residential use will be expected to meet the government's nationally described space standard as set out in London Plan Table 3.3. The Council will also require development to adhere to the Mayor's Housing Supplementary Planning Guidance.

Building services equipment

7.34 Building services equipment, such as air cooling, heating, ventilation and extraction systems, lift and mechanical equipment, as well as fire escapes, ancillary plant and ducting should be contained within the envelope of a building or be located in a visually inconspicuous position.

Tall buildings

7.35 For this policy tall buildings are considered to be those which are substantially taller than their neighbours or which significantly change the skyline. While tall buildings offer the opportunity for intensive use, their siting and design should be carefully considered in order not to detract from the nature of surrounding places and the quality of life for living and working around them. Applications for tall buildings will be considered against Local Plan policies on design and heritage, along with the full range of policies, including those on mixed use, sustainability, amenity and microclimate. The effect on views and provision of communal and private amenity space will also be important considerations. In assessing applications for tall buildings the Council will have regard to the London Plan Policy 7.7 on the location of tall and large buildings and the Historic England Advice Note 4 on Tall Buildings.

7.36 Due to the dense nature of Camden with extensive range and coverage of heritage assets, such as conservation areas, numerous listed buildings and five strategic views and two background views crossing the borough, the Council do not consider that it is practical to identify broad areas either suitable, or not suitable, for tall buildings. In the borough, a site may be suitable for a tall building while adjacent sites are not, due to impact on either views, conservations areas or listed buildings. Indeed, in some cases, suitability for a tall building differs across a single site. Given Camden's environmental

characteristics, the entire borough is considered as being within the 'sensitive' category, as defined by the English Heritage / CABE Guidance on Tall Buildings. Tall building proposals in Camden will therefore merit detailed design assessments.

7.37 Further relevant guidance to the Council's approach to tall buildings is set out in:

- Area Action Plans including the Euston Area Plan and the Fitzrovia Area Action Plan;
- Site Allocations;
- Conservation area appraisals and management strategies;
- The Camden Character Study; and
- Neighbourhood Plans.

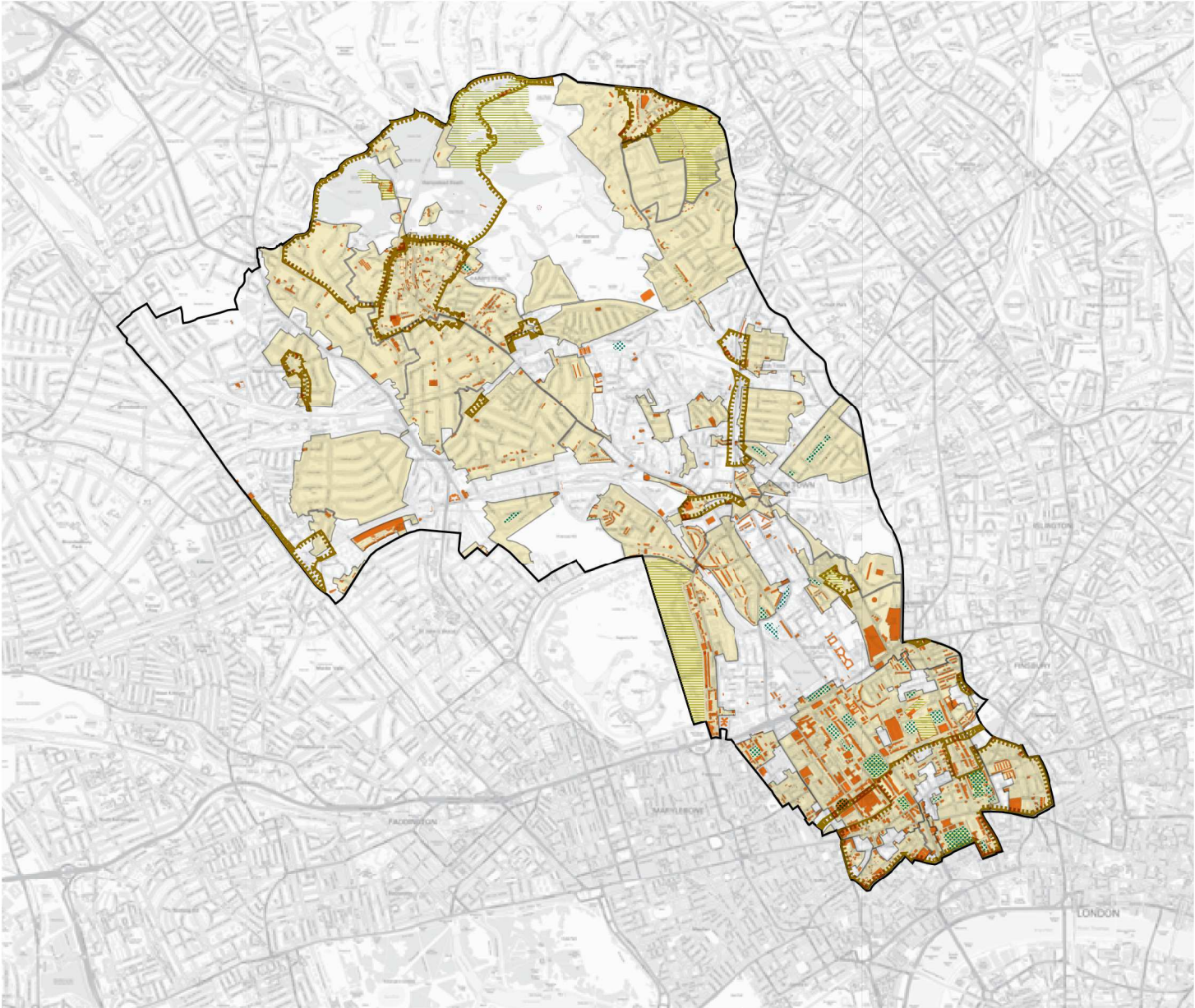
7.38 The Council will take these documents into account where relevant in assessing applications for tall buildings.

Heritage

Camden's heritage

- 7.39 Camden has a rich architectural heritage with many special places and buildings from throughout Camden's history (see "Map 4: Heritage and Archaeological Sites" on page 210). 39 areas, covering much of the borough, are designated as conservation areas, recognising their special architectural or historic interest and their character and appearance. We have prepared conservation area statements, appraisals and management strategies that provide further guidance on the character of these areas. We will take these documents into account as material considerations when we assess applications for planning permission in these areas.
- 7.40 Over 5,600 buildings and structures in Camden are nationally listed for their special historical or architectural interest and 53 of the borough's squares are protected by the London Squares Preservation Act 1931. In addition, 14 open spaces in Camden are on Historic England's Register of Parks and Gardens. The Council also maintains a local list of over 400 non-designated heritage assets. Camden also has a generally well-preserved archaeological heritage, with 13 identified archaeological priority areas, although this can be vulnerable to development and changes in land use.
- 7.41 The Council places great importance on preserving the historic environment. Under the Planning (Listed Buildings and Conservation Areas) Act the Council has a responsibility to have special regard to preserving listed buildings and must pay special attention to preserving or enhancing the character or appearance of conservation areas. The National Planning Policy Framework states that in decision making local authorities should give great weight to conservation of designated heritage assets in a manner appropriate to their significance. The Council expects that development not only conserves, but also takes opportunities to enhance, or better reveal the significance of heritage assets and their settings.

Map 4: Heritage and Archaeological Sites



- Conservation area
- Listed building
- Archaeological priority area
- London Squares
- Gardens and Squares of Historic Interest
- Borough boundary

Policy D2 Heritage

The Council will preserve and, where appropriate, enhance Camden's rich and diverse heritage assets and their settings, including conservation areas, listed buildings, archaeological remains, scheduled ancient monuments and historic parks and gardens and locally listed heritage assets.

Designated heritage assets

Designated heritage assets include conservation areas and listed buildings. The Council will not permit the loss of or substantial harm to a designated heritage asset, including conservation areas and Listed Buildings, unless it can be demonstrated that the substantial harm or loss is necessary to achieve substantial public benefits that outweigh that harm or loss, or all of the following apply:

- a. the nature of the heritage asset prevents all reasonable uses of the site;
- b. no viable use of the heritage asset itself can be found in the medium term through appropriate marketing that will enable its conservation;
- c. conservation by grant-funding or some form of charitable or public ownership is demonstrably not possible; and
- d. the harm or loss is outweighed by the benefit of bringing the site back into use.

The Council will not permit development that results in harm that is less than substantial to the significance of a designated heritage asset unless the public benefits of the proposal convincingly outweigh that harm.

Conservation areas

Conservation areas are designated heritage assets and this section should be read in conjunction with the section above headed 'designated heritage assets'. In order to maintain the character of Camden's conservation areas, the Council will take account of conservation area statements, appraisals and management strategies when assessing applications within conservation areas.

The Council will:

- e. require that development within conservation areas preserves or, where possible, enhances the character or appearance of the area;
- f. resist the total or substantial demolition of an unlisted building that makes a positive contribution to the character or appearance of a conservation area;
- g. resist development outside of a conservation area that causes harm to the character or appearance of that conservation area; and
- h. preserve trees and garden spaces which contribute to the character and appearance of a conservation area or which provide a setting for Camden's architectural heritage.

Listed Buildings

Listed buildings are designated heritage assets and this section should be read in conjunction with the section above headed 'designated heritage assets'. To preserve or enhance the borough's listed buildings, the Council will:

- i. resist the total or substantial demolition of a listed building;
- j. resist proposals for a change of use or alterations and extensions to a listed building where this would cause harm to the special architectural and historic interest of the building; and
- k. resist development that would cause harm to significance of a listed building through an effect on its setting.

Archaeology

The Council will protect remains of archaeological importance by ensuring acceptable measures are taken proportionate to the significance of the heritage asset to preserve them and their setting, including physical preservation, where appropriate.

Other heritage assets and non-designated heritage assets

The Council will seek to protect other heritage assets including non-designated heritage assets (including those on and off the local list), Registered Parks and Gardens and London Squares.

The effect of a proposal on the significance of a non-designated heritage asset will be weighed against the public benefits of the proposal, balancing the scale of any harm or loss and the significance of the heritage asset.

Enhancing the historic environment

7.42

The Council has a proactive approach to conserving heritage assets. In addition to the application of Local Plan policies the Council protects the historic environment through the following areas of work:

- Conservation Area Management Strategies: The Council works with the Conservation Area Advisory Committees to update and support the implementation of the strategies.
- Heritage at Risk: The Council identifies buildings and structures at risk and proactively seeks to conserve and where required put them back into viable use, including identifying sources of funding.
- Local list of undesignated heritage assets: The Council introduced the local list in 2015 and it will be updated annually.
- Guidance: The Council has adopted detailed guidance for the preservation of heritage assets in the supplementary planning document Camden Planning Guidance on design, and Retrofitting Planning Guidance (for sustainability measures in historic buildings). The Council updates planning guidance as required.
- Area based work: Conservation and enhancement of the historic environment is a key objective of area action plans and the Site Allocations.

The Fitzrovia Area Action Plan for example sets principles for developing key sites which retain and enhance the setting of listed buildings.

- 7.43 The Council recognises that development can make a positive contribution to, or better reveal the significance of, heritage assets and will encourage this where appropriate. Responding appropriately to the significance of heritage assets and its setting can greatly enhance development schemes (for example, King's Cross Central).

Designated heritage assets

- 7.44 Designated heritage assets include listed buildings and structures, registered parks and gardens and conservation areas. The Council will apply the policies above and will not permit harm to a designated heritage asset unless the public benefits of the proposal outweigh the harm. Further guidance on public benefits is set out in National Planning Practice Guidance (Paragraph: 020 Reference ID: 18a-020-20140306). Any harm to or loss of a designated heritage asset will require clear and convincing justification which must be provided by the applicant to the Council. In decision making the Council will take into consideration the scale of the harm and the significance of the asset.
- 7.45 In accordance with the National Planning Policy Framework the Council will only permit development resulting in substantial harm to or loss to a grade II listed building, park or garden in exceptional circumstances and will only permit development resulting in substantial harm to or loss to a grade I and II* listed building, grade I and II* registered park or garden in wholly exceptional circumstances.

Conservation areas

- 7.46 In order to preserve or enhance important elements of local character, we need to recognise and understand the factors that create that character. The Council has prepared a series of conservation area statements, appraisals and management plans that assess and analyse the character and appearance of each of our conservation areas and set out how we consider they can be preserved or enhanced. We will take these into account when assessing planning applications for development in conservation areas. We will seek to manage change in a way that retains the distinctive characters of our conservation areas and will expect new development to contribute positively to this. The Council will therefore only grant planning permission for development in Camden's conservation areas that preserves or enhances the special character or appearance of the area.
- 7.47 The character of conservation areas derive from the combination of a number of factors, including scale, density, pattern of development, landscape, topography, open space, materials, architectural detailing and uses. These elements should be identified and responded to in the design of new development. Design and Access Statements should include an assessment of local context and character and set out how the development has been informed by it and responds to it.
- 7.48 Due to the largely dense urban nature of Camden, the character or appearance of our conservation areas can also be affected by development which is outside of conservation areas, but visible from within them. This includes high or bulky

buildings, which can have an impact on areas some distance away, as well as adjacent premises. The Council will therefore not permit development in locations outside conservation areas that it considers would cause harm to the character, appearance or setting of such an area.

Demolition in conservation areas

- 7.49 The Council has a general presumption in favour of retaining buildings that make a positive contribution to the character or appearance of a conservation area, whether they are listed or not, so as to preserve this character and appearance. The Council will resist the total or substantial demolition of buildings which make a positive contribution to a conservation area unless circumstances are shown that outweigh the case for retention. Applicants will be required to justify the demolition of a building that makes a positive contribution to a conservation area, having regard to the National Planning Policy Framework, Camden's conservation area statements, appraisals and management strategies and any other relevant supplementary guidance produced by the Council.
- 7.50 When considering applications for demolition, the Council will take account of group value, context and the setting of buildings, as well as their quality as individual structures and any contribution to the setting of listed buildings. Applications must clearly show which buildings or parts of buildings are to be demolished.
- 7.51 Applications for total or substantial demolition in conservation areas must demonstrate to the Council's satisfaction that effective measures will be taken during demolition and building works to ensure structural stability of retained parts and adjoining structures. Before planning permission for demolition is granted, the Council must be satisfied that there are acceptable detailed plans for the redevelopment.
- 7.52 In addition proposals for demolition and reconstruction should be justified in terms of the optimisation of resources and energy use in comparison with the existing building. Further details on this are in "Policy CC1 Climate change mitigation".

Use

- 7.53 Changes in patterns of use can also erode the character of an area. It is therefore important that, whenever possible, uses which contribute to the character of a conservation area are not displaced by redevelopment. Two uses of particular importance to the character of conservation areas are pubs and local shops, especially when they are in located in historic buildings. The Council will protect these uses as set out in "Policy C4 Public houses" and "Section 9 Town centres and shops".

Details

- 7.54 The character and appearance of a conservation area can be eroded through the loss of traditional architectural details such as historic windows and doors, characteristic rooftops, garden settings and boundary treatments. Where alterations are proposed they should be undertaken in a material of a similar appearance to the original. Traditional features should be retained or reinstated

where they have been lost, using examples on neighbouring houses and streets to inform the restoration. The Council will consider the introduction of Article 4 Directions to remove permitted development rights for the removal or alterations of traditional details where the character and appearance of a conservation area is considered to be under threat.

Landscape

- 7.55 The value of existing gardens, trees and landscape to the character of the borough is described in “Policy A2 Open space” and they make a particular contribution to conservation areas. Development will not be permitted which causes the loss of trees or garden space where this is important to the character and appearance of a conservation area.

Sustainable design and retrofitting

- 7.56 Historic buildings including those in conservation areas can be sensitively adapted to meet the needs of climate change and energy saving while preserving their special interest and ensuring their long-term survival. In assessing applications for retrofitting sustainability measures to historic buildings the Council will take into consideration the public benefits gained from the improved energy efficiency of these buildings, including reduction of fuel poverty. These considerations will be weighed up against the degree to which proposals will change the appearance of the building, taking into consideration the scale of harm to appearance and the significance of the building. Applicants are encouraged to follow the detailed advice in Camden’s Retrofitting Planning Guidance, the energy efficiency planning guidance for conservation areas and the Historic England website.

Listed buildings

- 7.57 Camden’s listed buildings and structures provide a rich and unique historic and architectural legacy. They make an important and valued contribution to the appearance of the borough and provide places to live and work in, well known visitor attractions and cherished local landmarks. We have a duty to preserve and maintain these for present and future generations.
- 7.58 The Council has a general presumption in favour of the preservation of listed buildings. Total demolition, substantial demolition and rebuilding behind the façade of a listed building will not normally be considered acceptable. The matters which will be taken into consideration in an application for the total or substantial demolition of a listed building are those set out in the National Planning Policy Framework.
- 7.59 In order to protect listed buildings, the Council will control external and internal works that affect their special architectural or historic interest. Consent is required for any alterations, including some repairs, which would affect the special interest of a listed building.
- 7.60 The setting of a listed building is of great importance and should not be harmed by unsympathetic neighbouring development. While the setting of a listed building may be limited to its immediate surroundings, it can often extend some distance from it. The value of a listed building can be greatly diminished if

unsympathetic development elsewhere harms its appearance or its harmonious relationship with its surroundings. Applicants will be expected to provide sufficient information about the proposed development and its relationship with its immediate setting, in the form of a design statement.

Access in listed buildings

- 7.61 Where listed buildings and their approaches are being altered, disabled access should be considered and incorporated. The Council will balance the requirement for access with the interests of conservation and preservation to achieve an accessible solution. We will expect design approaches to be fully informed by an audit of conservation constraints and access needs and to have considered all available options. The listed nature of a building does not preclude the development of inclusive design solutions and the Council expects sensitivity and creativity to be employed in achieving solutions that meet the needs of accessibility and conservation.

Sustainability measures in listed buildings

- 7.62 Proposals that reduce the energy consumption of listed buildings will be welcomed provided that they do not cause harm to the special architectural and historic interest of the building or group. Energy use can be reduced by means that do not harm the fabric or appearance of the building, for instance roof insulation, draught proofing, secondary glazing, more efficient boilers and heating and lighting systems and use of green energy sources. Depending on the form of the building, renewable energy technologies may also be installed, for instance solar water heating and photovoltaics.

Archaeology

- 7.63 Camden has a rich archaeological heritage which comprises of both above and below ground remains, in the form of individual finds, evidence of former settlements and standing structures. These remains are vulnerable to modern development and land use. There are currently 13 archaeological priority areas in the borough (see “Map 4: Heritage and Archaeological Sites”) although these are scheduled for review in 2017.
- 7.64 The archaeological priority areas provide a general guide to areas of archaeological remains, but do not indicate every find site in the borough. These are based on current knowledge and may be refined or altered as a result of future archaeological research or discoveries.
- 7.65 It is likely that archaeological remains will be found throughout the borough, both within and outside the archaeological priority areas. Many archaeological remains have yet to be discovered, so their extent and significance is not known. When researching the development potential of a site, developers should, in all cases, assess whether the site is known or is likely to contain archaeological remains. Where there is good reason to believe that there are remains of archaeological importance on a site, the Council will consider directing applicants to supply further details of proposed developments, including the results of archaeological desk-based assessment and field evaluation. Scheduled monument consent must be obtained before any alterations are made to scheduled ancient monuments. Camden has only one

scheduled ancient monument: Boadicea's Grave in Hampstead Heath.

- 7.66 If important archaeological remains are found, the Council will seek to resist development which adversely affects remains and to minimise the impact of development schemes by requiring either in situ preservation or a programme of excavation, recording, publication and archiving of remains. There will usually be a presumption in favour of in situ preservation of remains and, if important archaeological remains are found, measures should be adopted to allow the remains to be permanently preserved in situ. Where in situ preservation is not feasible, no development shall take place until satisfactory excavation and recording of the remains has been carried out on site and subsequent analysis, publication and archiving undertaken by an archaeological organisation approved by the Council.
- 7.67 The Council will consult with, and be guided by, Historic England and the Greater London Archaeology Advisory Service (GLAAS) on the archaeological implications of development proposals. The Greater London Historic Environment Record, maintained by Historic England, contains further information on archaeological sites in Camden. When considering schemes involving archaeological remains, the Council will also have regard to the National Planning Policy Framework.

Other heritage assets

- 7.68 In addition to conservation areas, listed buildings and archaeological remains, Camden contains 14 registered parks and gardens, as identified by Historic England. There are also 53 London squares in the borough protected by the London Squares Preservation Act 1931. The Council will encourage the management of registered parks and gardens and London squares to maintain, and where appropriate, enhance their value and protect their setting. The Council will consult with Historic England over proposals affecting these parks and gardens. We also encourage the restoration and management of registered parks and gardens and London squares to enhance their value.

Non designated heritage assets

- 7.69 The borough also has many attractive, historic, locally significant buildings and features which contribute to the distinctiveness of local areas, but which are not formally designated. The National Planning Policy Framework identifies these features as non-designated heritage assets. Non-designated heritage assets may either be identified as part of the planning process or on Camden's Local List. Camden's Local List identifies historic buildings and features that are valued by the local community and that help give Camden its distinctive identity but are not already designated in another way (for example a listed building). When planning permission is required for any proposal that directly or indirectly affects the significance of a non-designated heritage asset (either on the Local List or not) then the Council will treat the significance of that asset as a material consideration when determining the application. The Local List is available at www.camden.gov.uk/locallist.

Shopfronts

- 7.70 Shopfronts contribute greatly to the character of centres and their distinctiveness. Most of Camden's town and neighbourhood centres date back to the 19th Century and earlier, having developed from commercial activities that first took place within dwellings, although there are some significant 20th Century shopping parades.
- 7.71 Please refer to "Policy TC2 Camden's centres and other shopping areas" for policy on the design of new retail spaces.

Policy D3 Shopfronts

The Council will expect a high standard of design in new and altered shopfronts, canopies, blinds, security measures and other features.

When determining proposals for shopfront development the Council will consider:

- a. the design of the shopfront or feature, including its details and materials;
- b. the existing character, architectural and historic merit and design of the building and its shopfront;
- c. the relationship between the shopfront and the upper floors of the building and surrounding properties, including the relationship between the shopfront and any forecourt or lightwell;
- d. the general characteristics of shopfronts in the area;
- e. community safety and the contribution made by shopfronts to natural surveillance; and
- f. the degree of accessibility.

The Council will resist the removal of shop windows without a suitable replacement and will ensure that where shop, service, food, drink and entertainment uses are lost, a shop window and visual display is maintained.

Where an original shopfront of architectural or historic value survives, in whole or in substantial part, there will be a presumption in favour of its retention. Where a new shopfront forms part of a group where original shop fronts survive, its design should complement their quality and character.

Protecting existing shopfronts

- 7.72 Shopfronts form an essential part of the character and attractiveness of many areas in Camden, in particular its centres, and contribute to the creation of vibrant streets and public spaces. We will seek to protect existing shopfronts that make a significant contribution to the appearance and character of an area, for example through their architectural and historic merit. We will consider the need to keep the appearance of the shopfront, taking into account the quality of its design, its historic importance and its location. Good examples of shopfronts should be retained wherever possible.

Advertisements

- 7.81 This policy applies to all advertisements requiring advertisement consent under the Town and Country Planning (Control of Advertisements) (England) Regulations 2007. Certain types of advertisements do not require advertisement consent and are regarded as having ‘deemed consent’ as they meet the specifications set out in the regulations. Information on what types of advertisements require consent is set out in Outdoor advertisements and signs: a guide for advertisers (Communities and Local Government, June 2007). Advertisements are only controlled in respect to their effect on amenity and public safety. Further guidance on Camden’s approach to advertisements is available in the supplementary planning document Camden Planning Guidance on design.

Policy D4 Advertisements

The Council will require advertisements to preserve or enhance the character of their setting and host building. Advertisements must respect the form, fabric, design and scale of their setting and host building and be of the highest standard of design, material and detail.

We will support advertisements that:

- a. preserve the character and amenity of the area; and
- b. preserve or enhance heritage assets and conservation areas.

We will resist advertisements that:

- c. contribute to an unsightly proliferation of signage in the area;
- d. contribute to street clutter in the public realm;
- e. cause light pollution to nearby residential properties or wildlife habitats;
- f. have flashing illuminated elements; or
- g. impact upon public safety.

The Council will resist advertisements on shopfronts that are above fascia level or ground floor level, except in exceptional circumstances.

Shroud advertisements, banners, hoardings / billboards / large outdoor signboards are subject to further criteria as set out in supplementary planning document Camden Planning Guidance on design .

Character and amenity

- 7.82 Advertisements and signs should be designed to be complementary to and preserve the character of the host building and local area. The size, location, materials, details and illumination of signs must be carefully considered. Interesting and unique styles of advertisements and signs will be considered acceptable where they are compatible with the host buildings and surrounding environment. The Council will resist advertisements where they contribute to or constitute clutter or an unsightly proliferation of signage in the area.

Heritage and conservation areas

- 7.83 Advertisements in conservation areas and on or near listed buildings require particularly detailed consideration given the sensitivity and historic nature of these areas or buildings. Any advertisements on or near a listed building or in a conservation area must not harm their character and appearance and must not obscure or damage specific architectural features of buildings.

Street furniture and the public realm

- 7.84 Street furniture includes objects placed on the street including traffic signs and signals, benches, street names, CCTV cameras, lighting, cycle parking, guardrails, bollards and bus shelters. The Council aims to reduce visual street clutter, reducing the number of objects on the street, rationalising their location and limiting the palette of materials. Free standing signs and signs on street furniture will not normally be accepted where they contribute to visual and physical clutter and create a hindrance to movement along the pavement or pedestrian footway.

Illumination and light pollution

- 7.85 Advertisements should not become unduly dominant in the street scene, cause light pollution that disturbs residents at night, cause light pollution to wildlife habitats, or cause safety hazards to drivers. To achieve these aims, consideration should be given to the intensity of illumination, surface area to be illuminated and the positioning and colours of advertisements. The type and appearance of illuminated signs should be sympathetic to the design of the building on which it is located. The method of illumination (internal, external, lettering, neon, etc.) should be determined by the design of the building. Illuminated signs, both internal and external, should not be flashing or intermittent.

Impact on safety

- 7.86 Advertisements will not be considered acceptable where they impact upon public safety, including when they:
- obstruct or impair sight lines to road users at junctions and corners;
 - reduce the effectiveness of a traffic sign or signal;
 - result in glare and dazzle or distract road users;
 - distract road users because of their unusual nature;
 - disrupt the free flow of pedestrian movement; or
 - endanger pedestrians forcing them to step on to the road.

Placement of advertisements on shopfronts

- 7.87 Generally shopfront advertisements will only be acceptable at the ground floor level, at fascia level or below. Fascia in this context refers to the signboard on the upper part of a shopfront showing the name of the shop. Advertisements above fascia level can appear visually obtrusive and unattractive and, where illuminated, they can cause light pollution to neighbouring residential properties.

Discontinuance

- 7.88 The Council takes a proactive approach to preserving or enhancing the townscape and public realm. Where existing advertisements with deemed consent are considered to harm the character and amenity of a building or local area the Council will, where appropriate seek removal of these advertisements, which may include serving of discontinuance notices.

Estate agent boards

- 7.89 A certain number and size of estate agent boards can be erected on properties without the benefit of advertisement consent. Areas may be exempted from this deemed consent under Regulation 7 of the 1992 Regulations. In these areas no boards will be granted advertisement consent by the Council because of their effect on visual amenity, except in exceptional circumstances. Please refer to the Camden website for the list of exempted areas.

