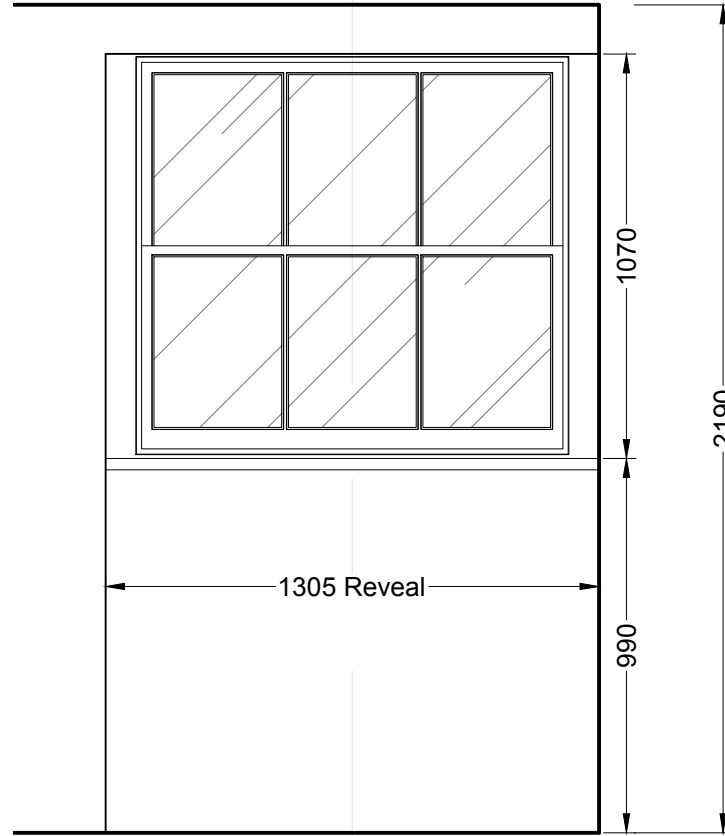
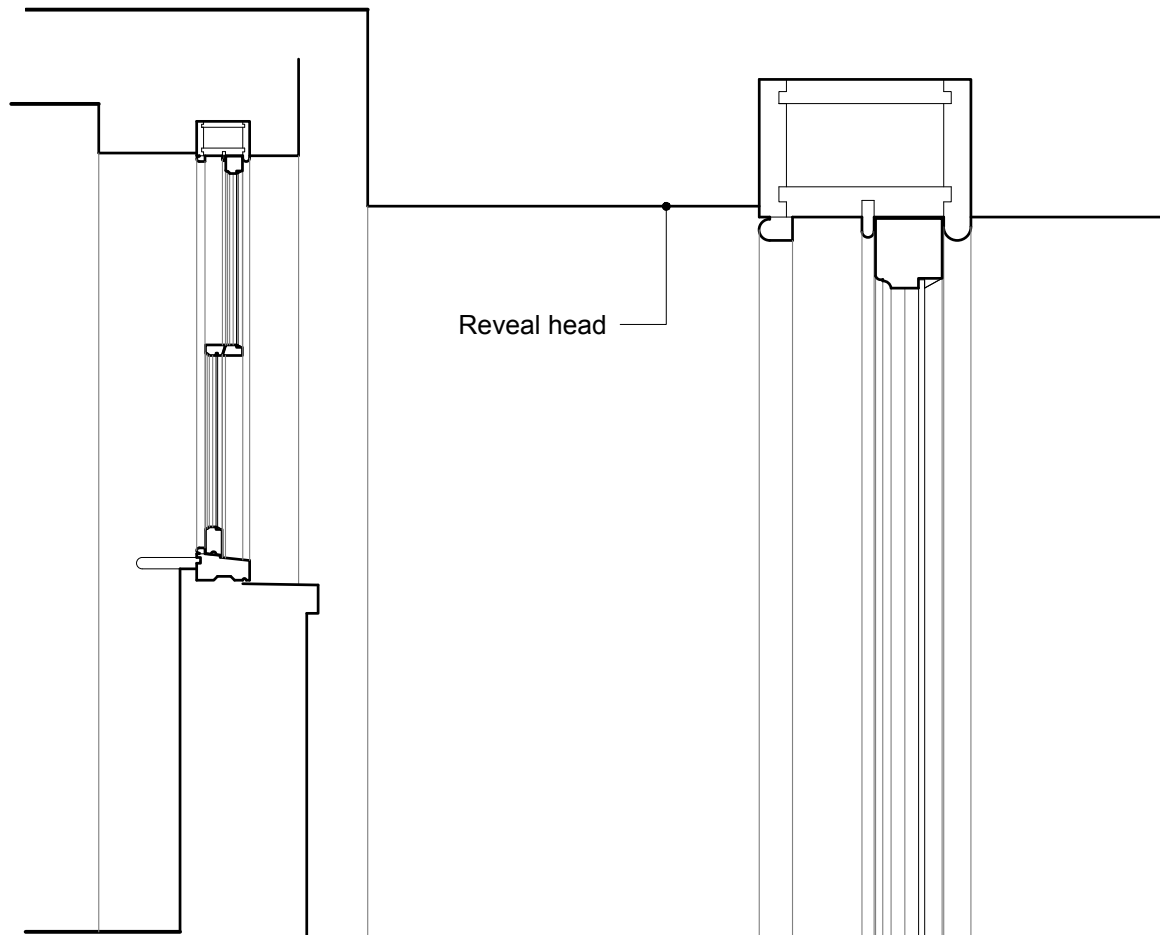


External Elevation
1:20



Internal Elevation
1:20

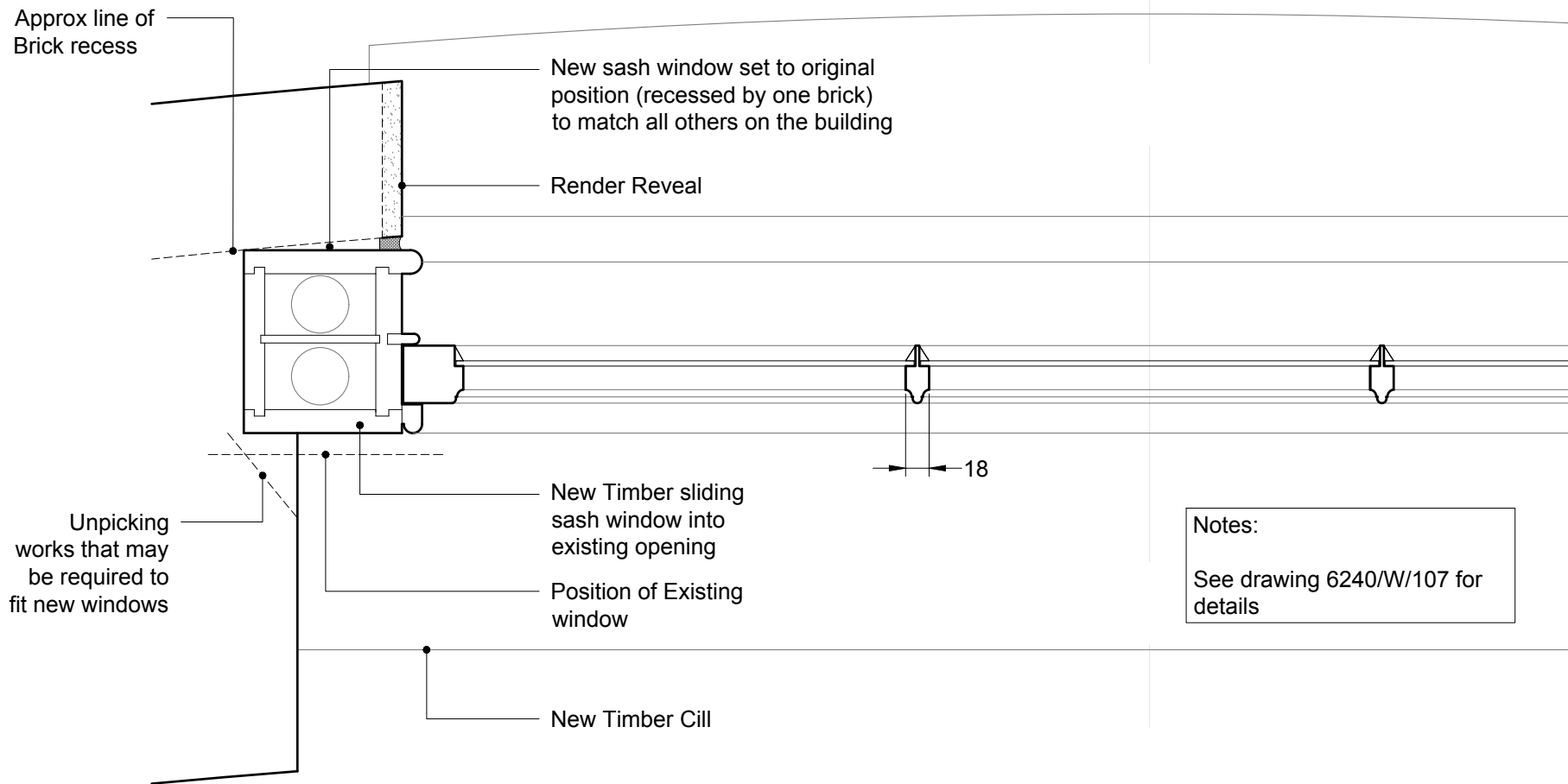
Section A-A
1:20



Reveal head

New sliding sash window set to the brick reveal to match all other sash windows on the building

28



Jamb Detail
1:5

Notes:
See drawing 6240/W/107 for details

Existing Stone Cill

New Timber Sliding Sash window

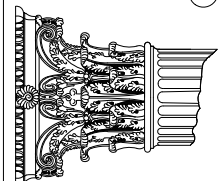
Timber window board

190

215

Detail Section A-A
1:5

RUSSELL TAYLOR ARCHITECTS



www.rtarcs.co.uk
TEL: 020 7261 1984
TEL: 01503 273 092

mail@rtarcs.co.uk
LONDON
CORNWALL

© Russell Taylor Architects own the copyright to this drawing and design

Rev. --
No. 6240/W/106
Date June 2019
Scale 1:20 & 1:5 @ A3 Size
Drawn REJ

No. 6 Fitzroy Square
EXISTING - Third Floor Windows