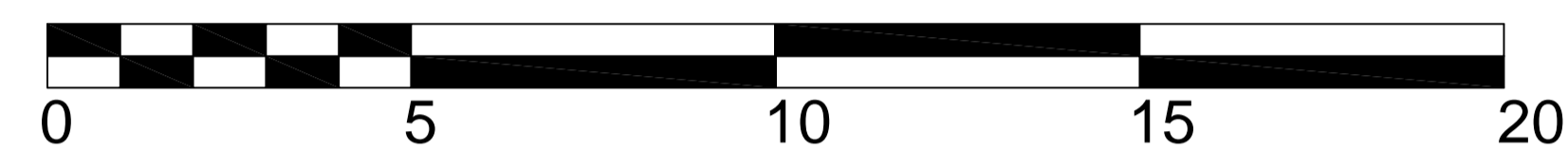
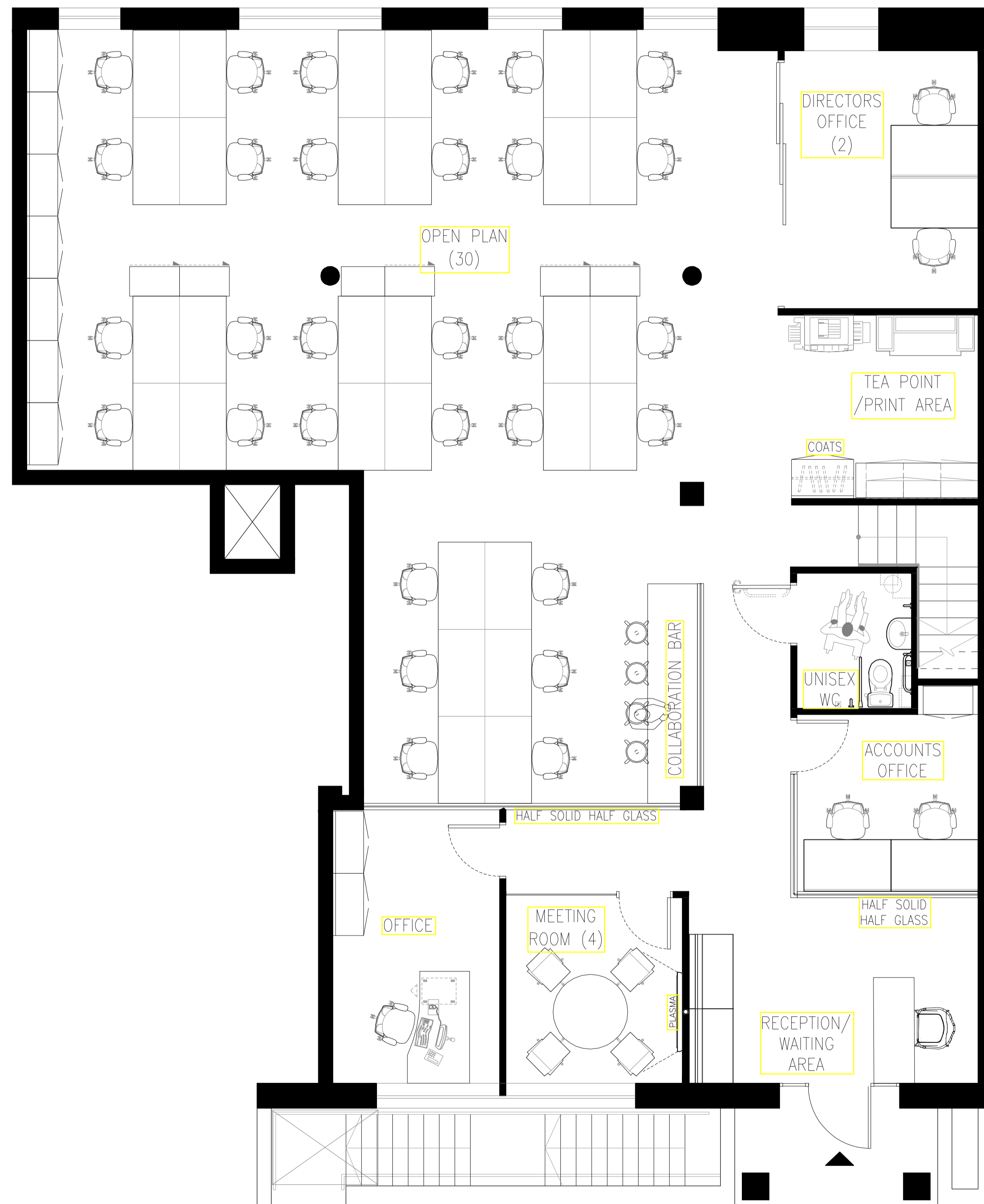
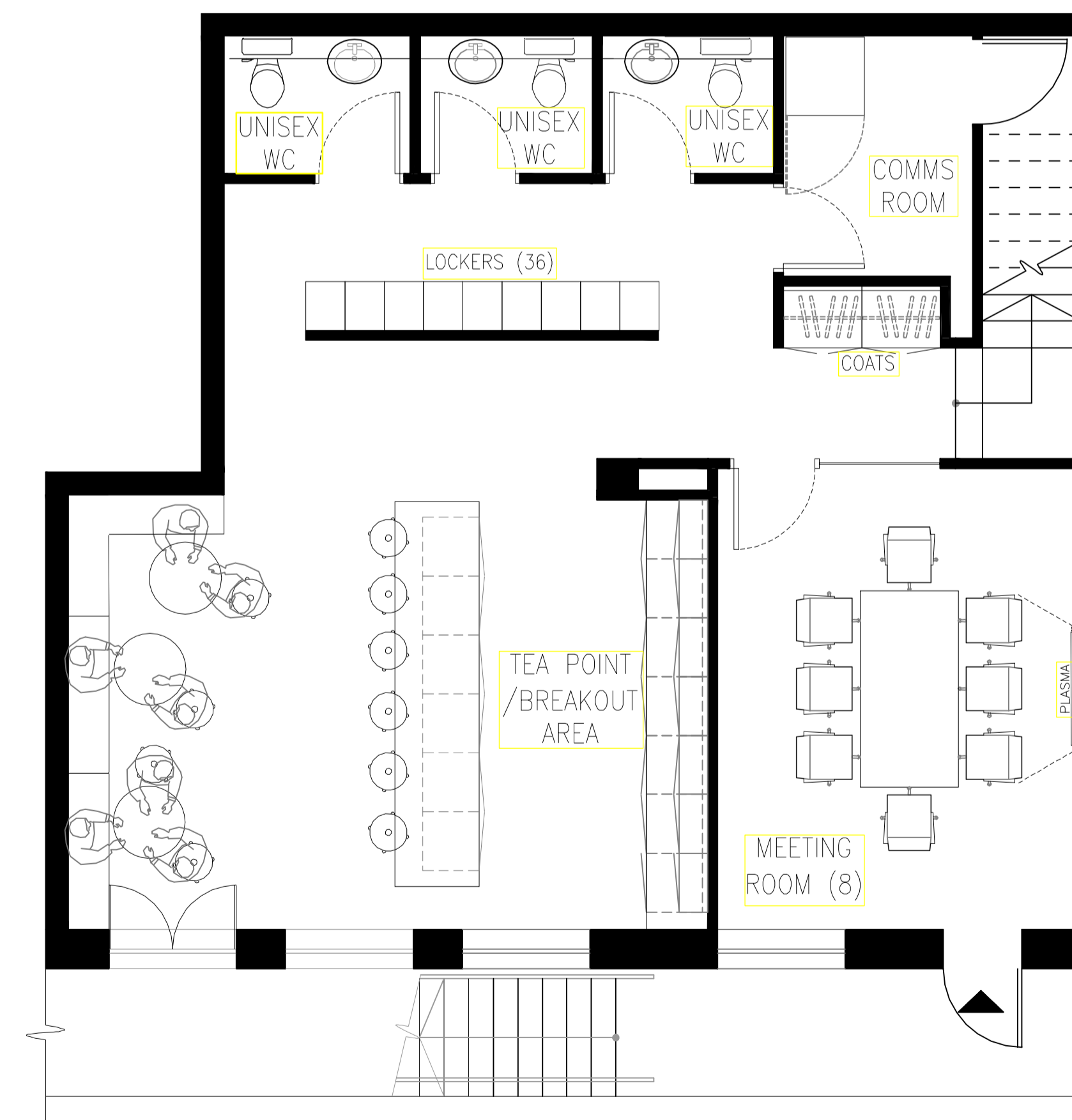


**Accommodation Schedule**

1	Reception Area
1	Meeting Room (4)
1	Meeting Room (8)
1	Directors Office (2)
1	Office (1)
1	Accounts Office (2)
1	Drinks Point
1	Copy Point
1	Tea Point / Breakout Area
1	Comms Room
1	Collaboration Area
1	Assessable WC
3	Unisex Wc's
30	Open Plan Area(30)
<b>35</b>	<b>Total Working Positions</b>
<b>3070 sqft</b>	<b>Total Area</b>



SCALE BAR 1:100




A	Drawing updated	GS/GFS	28/05/2019
-	Drawing first produced	SG/GFS	24/05/2019

REV	DESCRIPTION	BY	DATE

**DRAWING STATUS**  
**PRE CONSTRUCTION**

**Swiftline**

Address  
28 Theobalds Road  
Holborn, London  
WC1X 8NX

Project Number: 00000  
Ref: 00  
Floor: ALL  
Detail: GA

Drawing Title  
Ground & Lower Ground Floor  
General Arrangements Option 1

Produced by: SG/GFS  
Scale: 1:100@A1  
Amended date: 28/05/2019  
Rev: A

MARIS INTERIORS LLP  
The Holborn Building  
65 Southmark Street  
London SE1 0HR  
T: 020 7902 1750  
E: hello@maris-interiors.co.uk  
W: maris-interiors.co.uk