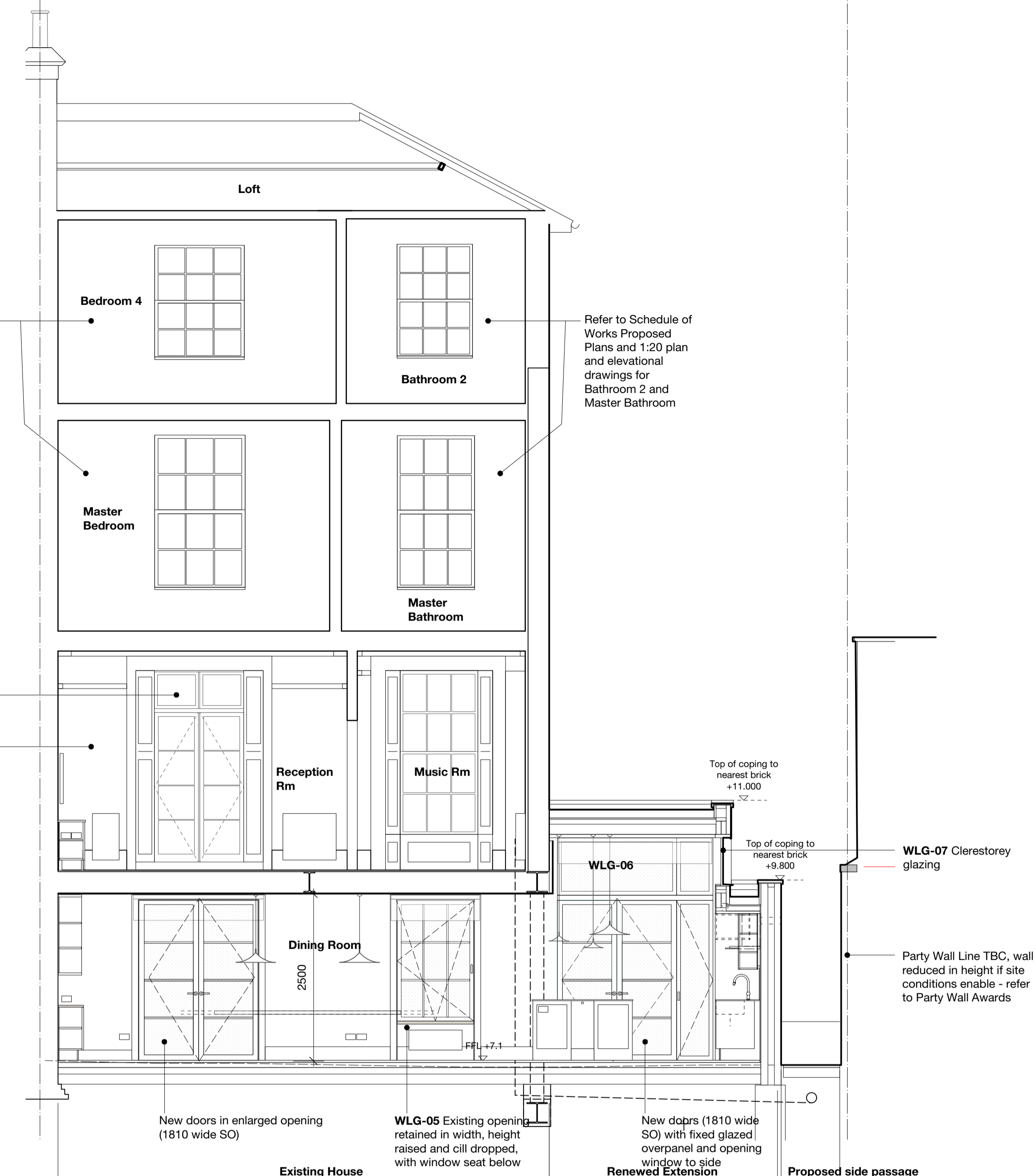
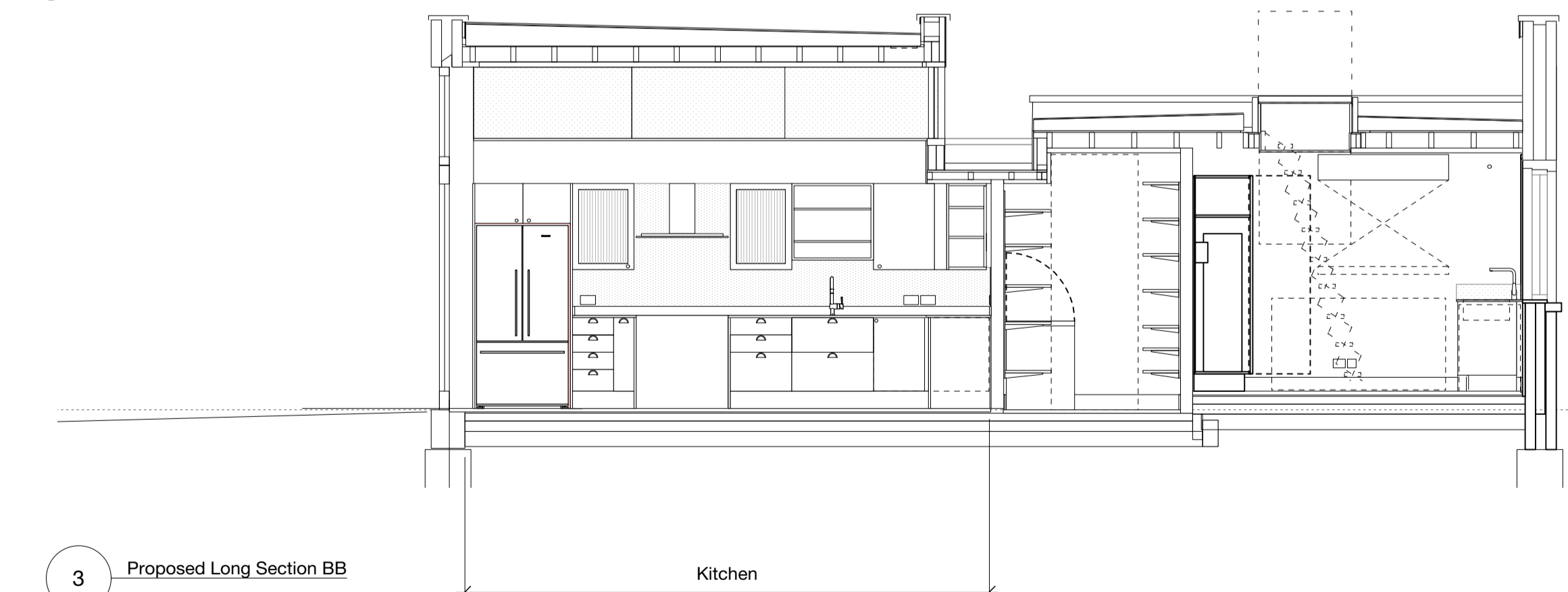


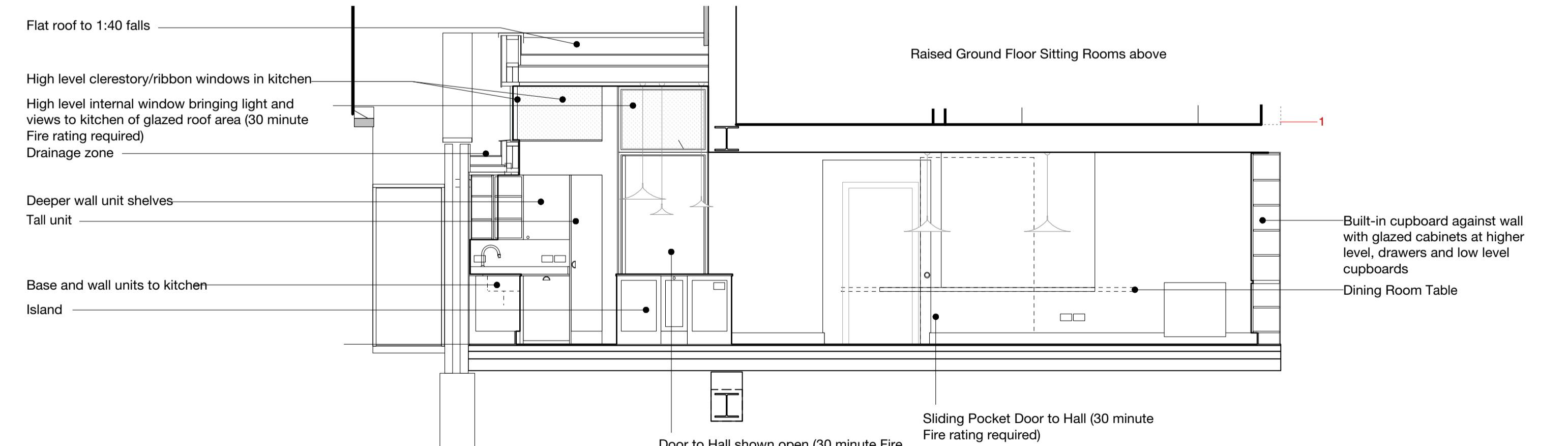
1 Proposed Long Section AA



2 Proposed Short Section CC



3 Proposed Long Section BB



4 Proposed Short Section DD

- Rev H 12/06/2019 Revised for Planning - rear elevation doors and dining room window altered
- Rev G 26/05/2019 Stage 4 Sign-off
- Rev F 25/05/2019 Revised for planning - parapet levels of clerestory reduced and parapet at front elevation raised
- Rev E 27/04/2019 Stage 4 / Design development
- Rev D 05/04/2019 Stage 3 / Planning Issue
- Rev C 02/04/2019 Preliminary Stage 3 / Planning Issue
- Rev B 25/02/2019 Stage 2 Issue
- Rev A 22/01/2019 Preliminary Stage 2 Issue, kitchen roof light added, roof concept developed with above ground drainage strategy, front access altered, sliding doors to dining and hobby room/office

Do not scale  
 PRELIMINARY ISSUE - NOT FOR CONSTRUCTION