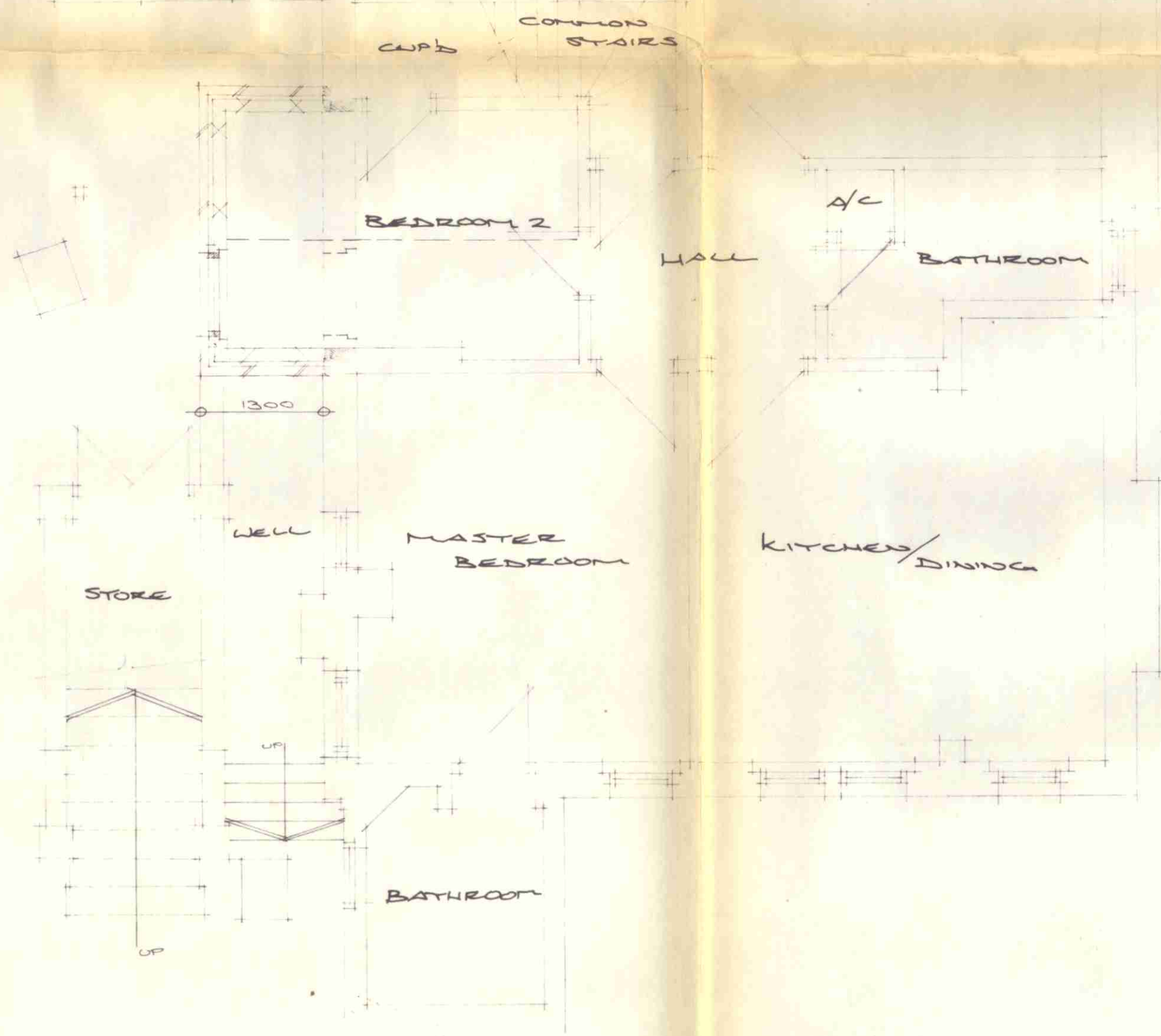
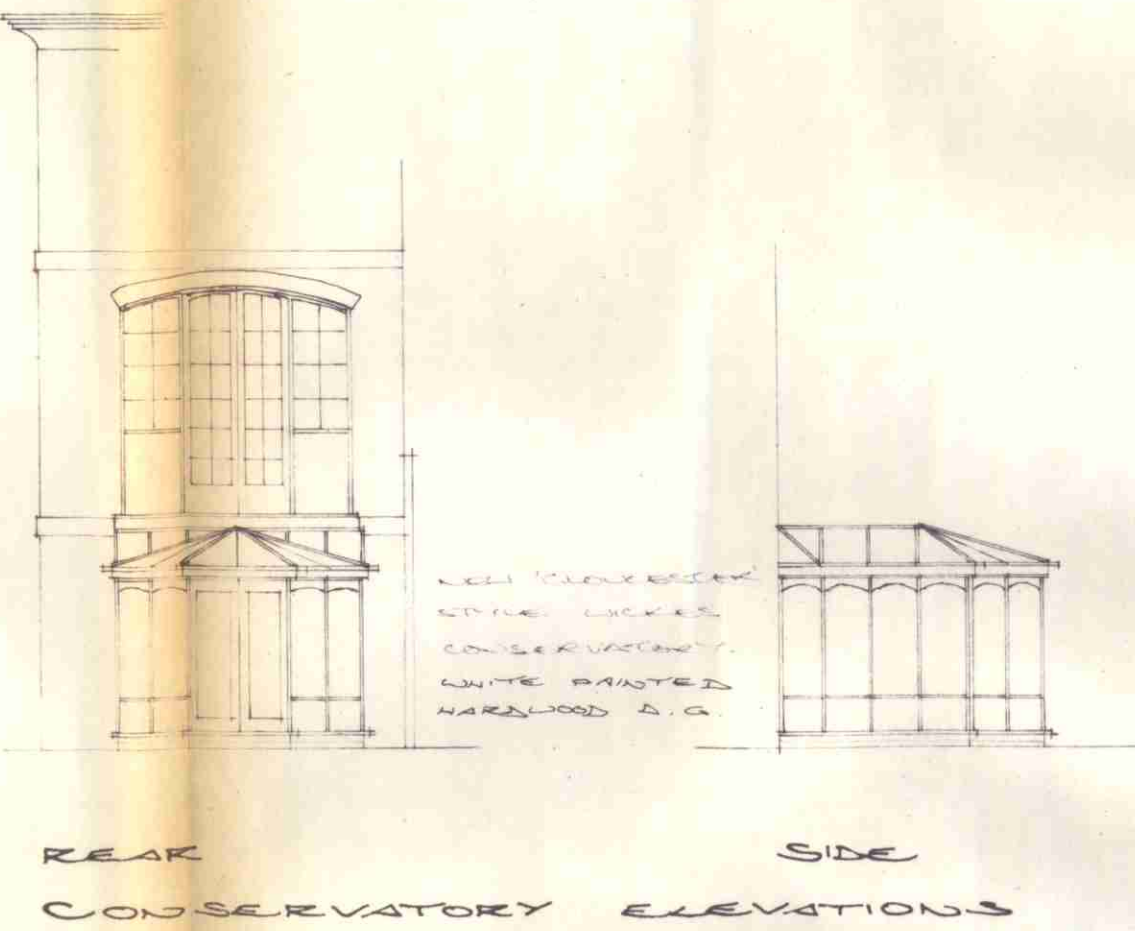
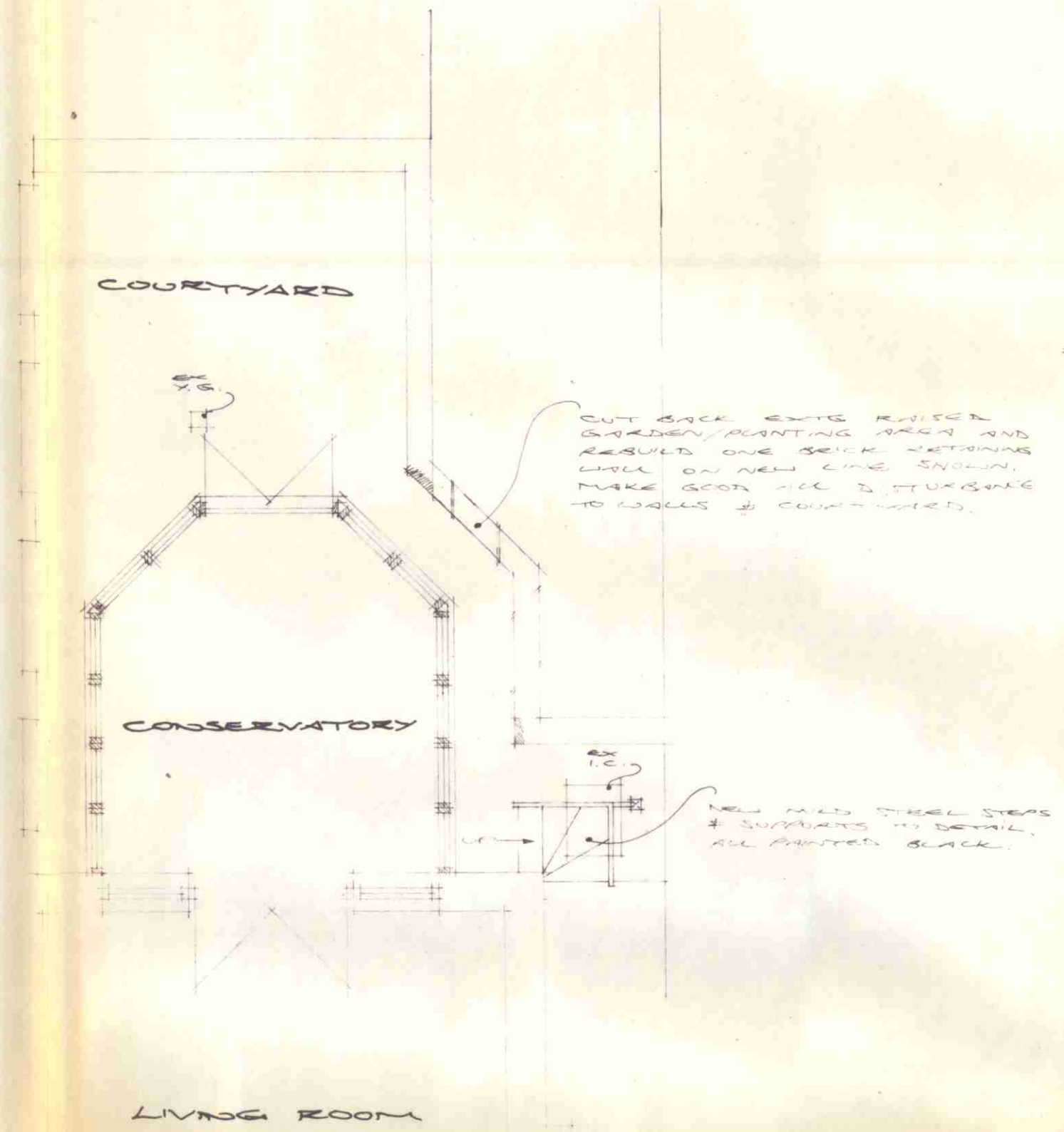
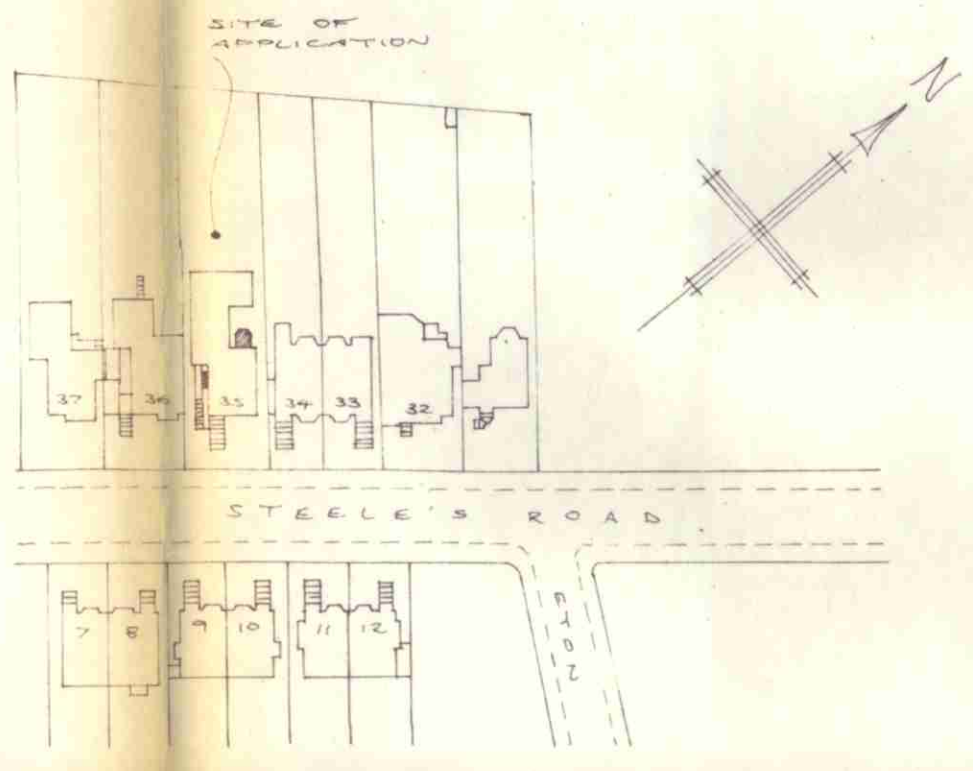
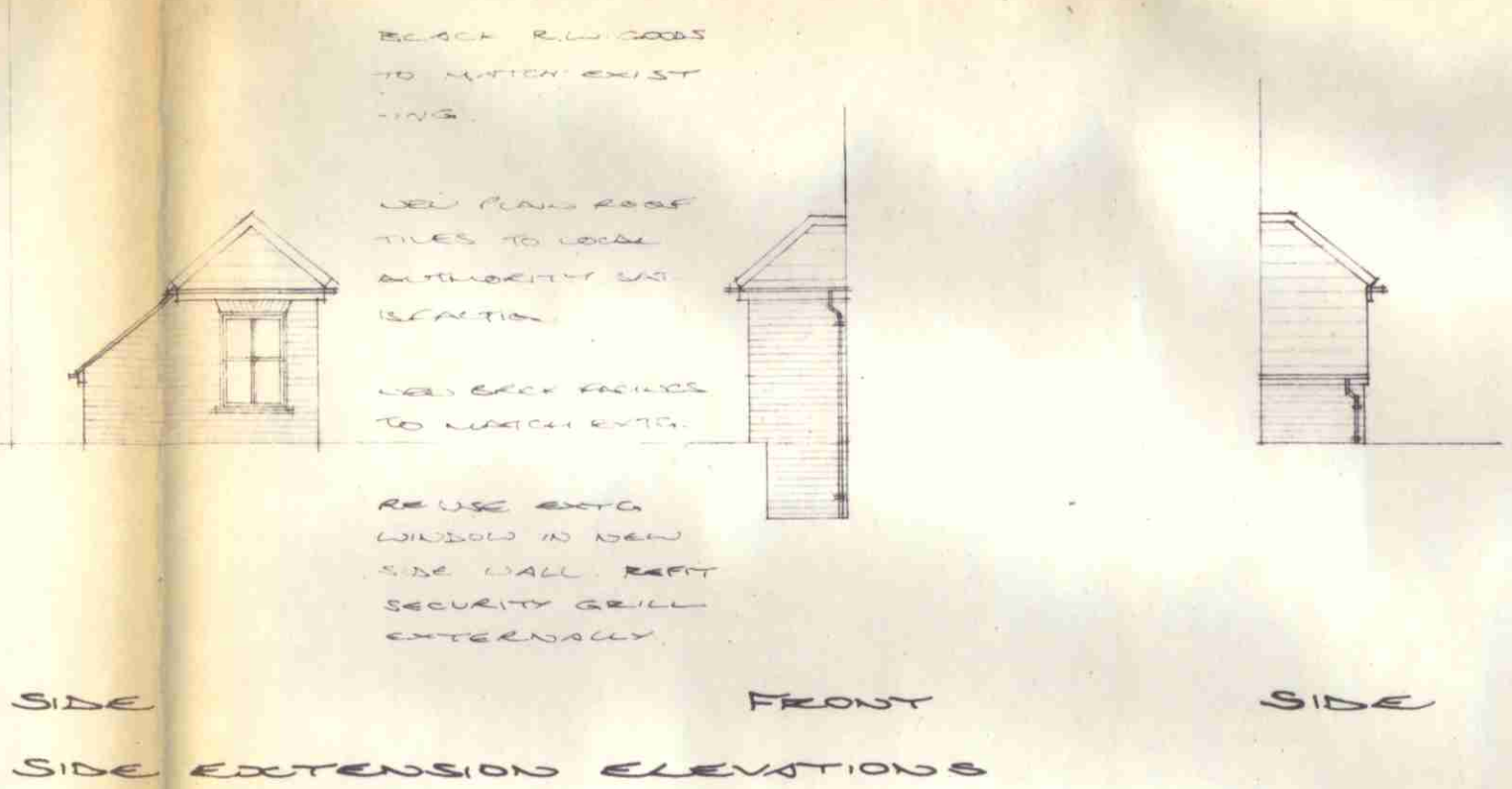


RECEIVED  
6 FEB 1989  
DEPARTMENT  
PLANNING AND TRANSPORT  
LONDON BOROUGH OF CAMDEN

RECEIVED  
3 MAY 1989  
DEPARTMENT  
PLANNING AND TRANSPORT  
LONDON BOROUGH OF CAMDEN



LOWER GROUND FLOOR PLAN



LOCATION PLAN - 1:1250

17 8905105

REVISIONS

AUTHOR: R. COVEY SURVEYOR  
KINGSLWOOD  
16 BURLWOOD AVENUE  
EASTCOTE PINNER HAS 222  
TELEPHONE: 01-346 3369

PROPOSED SINGLE STOREY  
SIDE EXTENSION AND  
REAR CONSERVATORY

35, STEELE'S ROAD,  
LONDON N.W.3.

RECEIVED  
3 MAY 1989  
DEPARTMENT  
PLANNING AND TRANSPORT  
LONDON BOROUGH OF CAMDEN

INTEGRATED CITY INTERIORS LIMITED

SCALE: 1:50 & 1:100 DATE: JANUARY 1989

890102/1