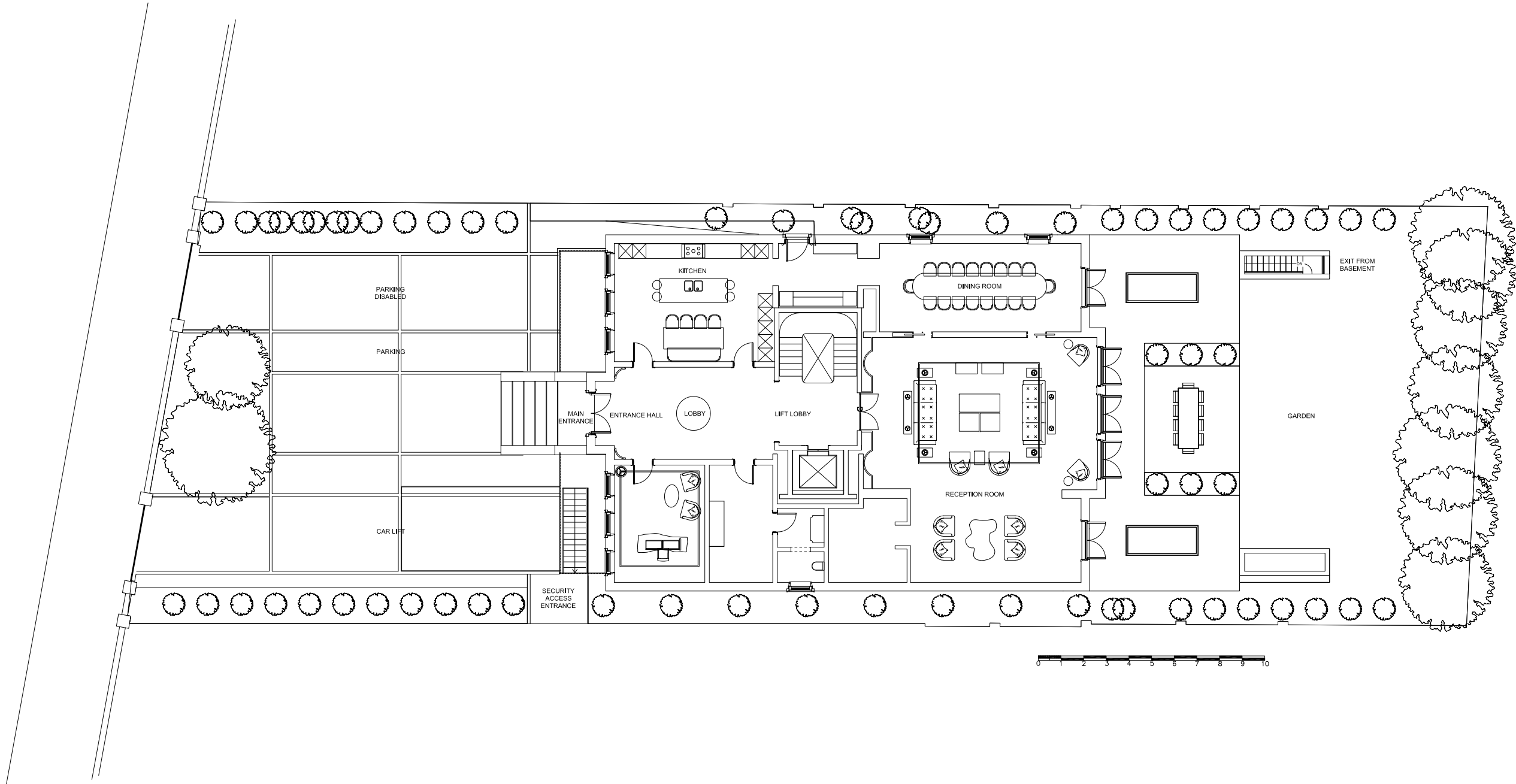


General notes:
 This drawing is copyright of KSR architects. This drawing must be read in conjunction with the Designer's Risk Assessment, specification and all other relevant documentation and drawings. KSR architects accept no liability for any expense, loss or damage of whatsoever nature and however arising from any variation made to this drawing or in the execution of the work to which it relates which has not been referred to them and their approval obtained.
 Do not scale from this drawing or the digital data, only figured dimensions are to be used. For Planning refer to linear scale.
 Check all dimensions on site prior to carrying out any works – advise any discrepancy



B	MMA APPLICATION	17.05.19	By	CHK
A	CAR PARKING	24.10.16	By	ST
Rev	Notes	dd.mm.yy	By	CHK

© KSR architects

KSRARCHITECTS
 KSR Architects LLP
 14 Grosvenor Street
 London W1V 0ND
 mail@ksrarchitects.com
 t +44 (0)20 7882 8000
 www.ksrarchitects.com

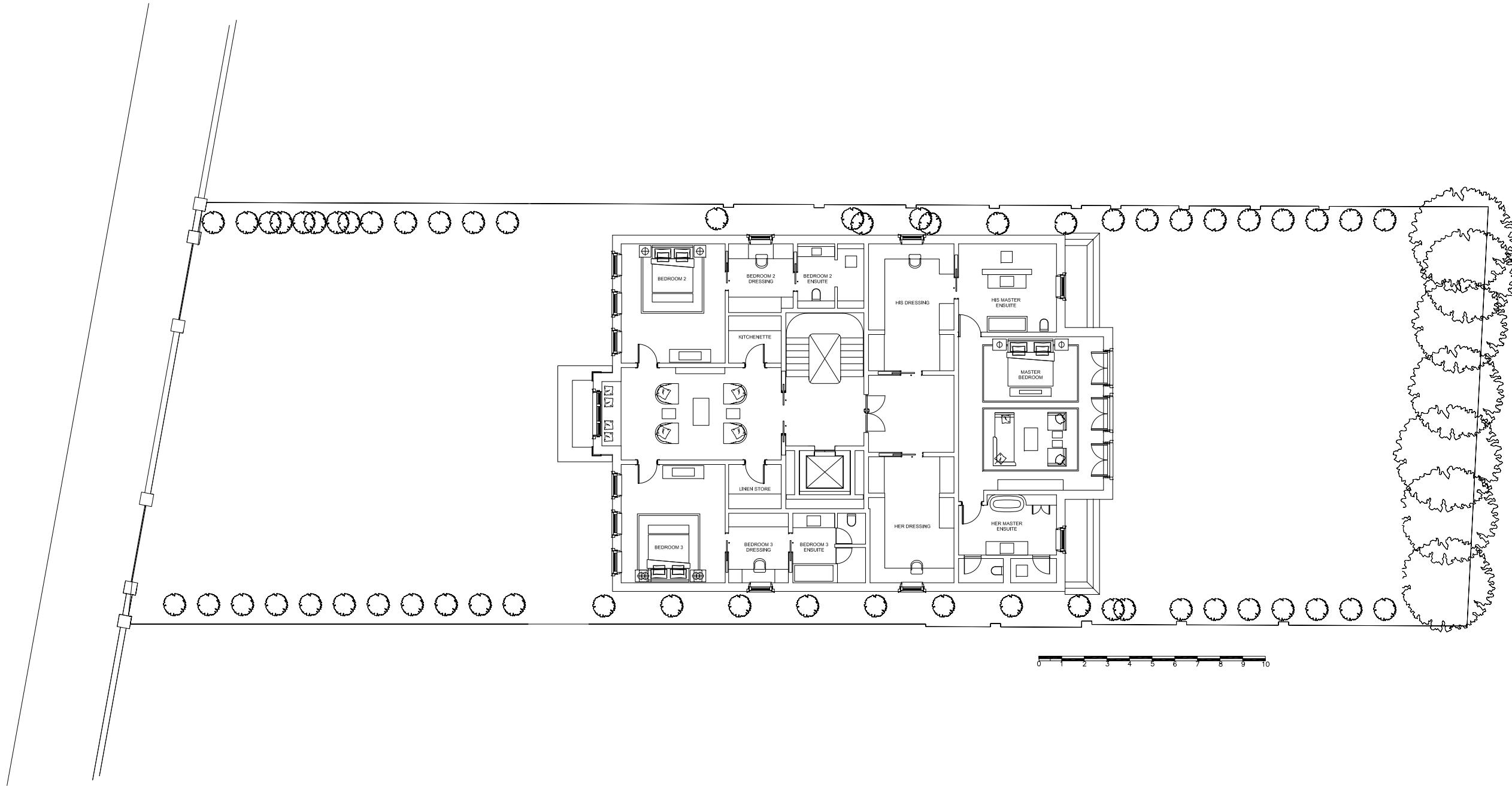
Project:
 62 Avenue Road
 NW8 6HT

Title:
 Ground Floor Plan-
 As Proposed

Date:	Drawn By:	Checked:
-------	-----------	----------

Scale: 1:100 @ A1 - 1:200 @ A3

Project Ref:	Drawing No:	Revision:
19021	EZR-034	B



General notes:
 This drawing is copyright of KSR architects. This drawing must be read in conjunction with the Designer's Risk Assessment, specification and all other relevant documentation and drawings. KSR architects accept no liability for any expense, loss or damage of whatsoever nature and however arising from any variation made to this drawing or in the execution of the work to which it relates which has not been referred to them and their approval obtained.
 Do not scale from this drawing or the digital data, only figured dimensions are to be used. For Planning refer to linear scale.
 Check all dimensions on site prior to carrying out any works – advise any discrepancy

A	MMA APPLICATION	17.05.19	By	Chkd
Rev	Notes	05.06.19	By	Chkd

© KSR architects

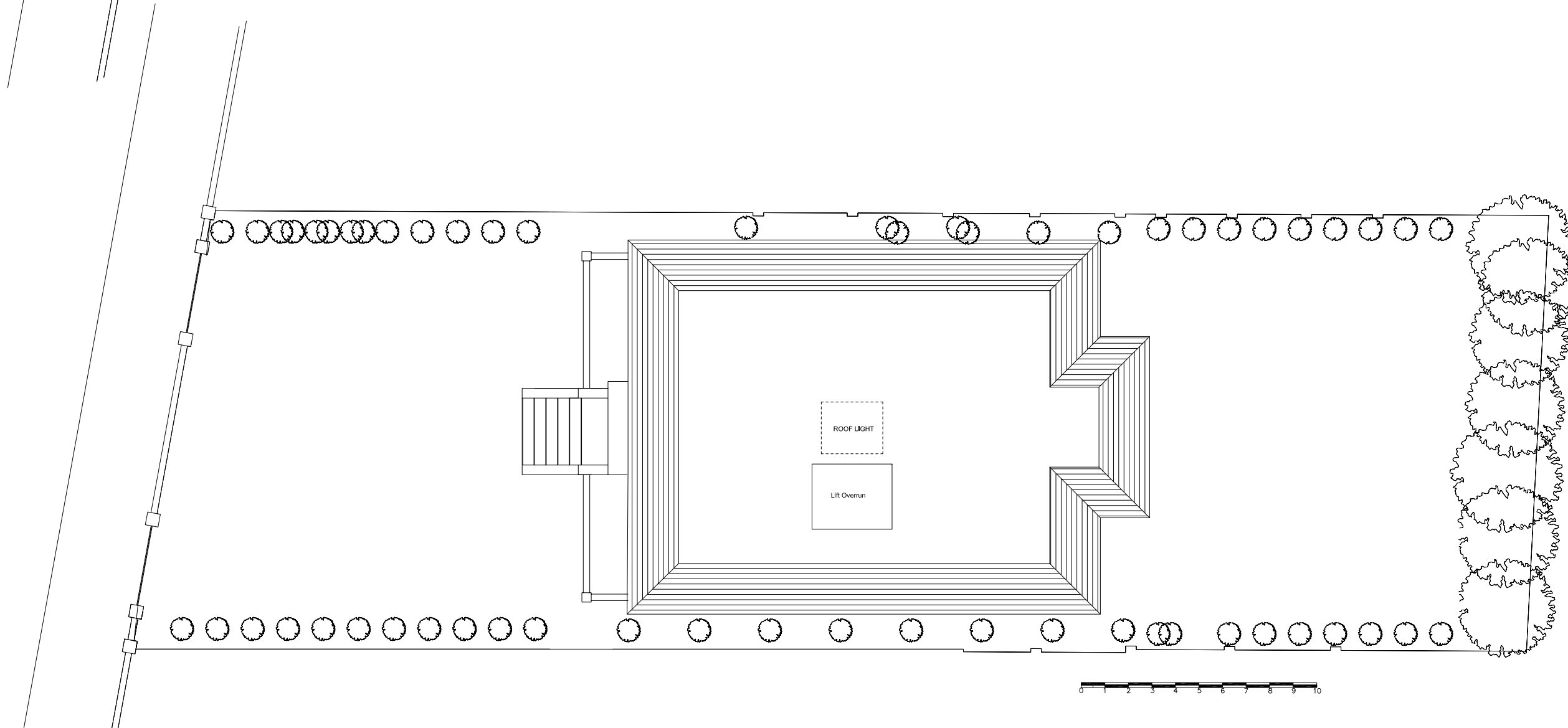
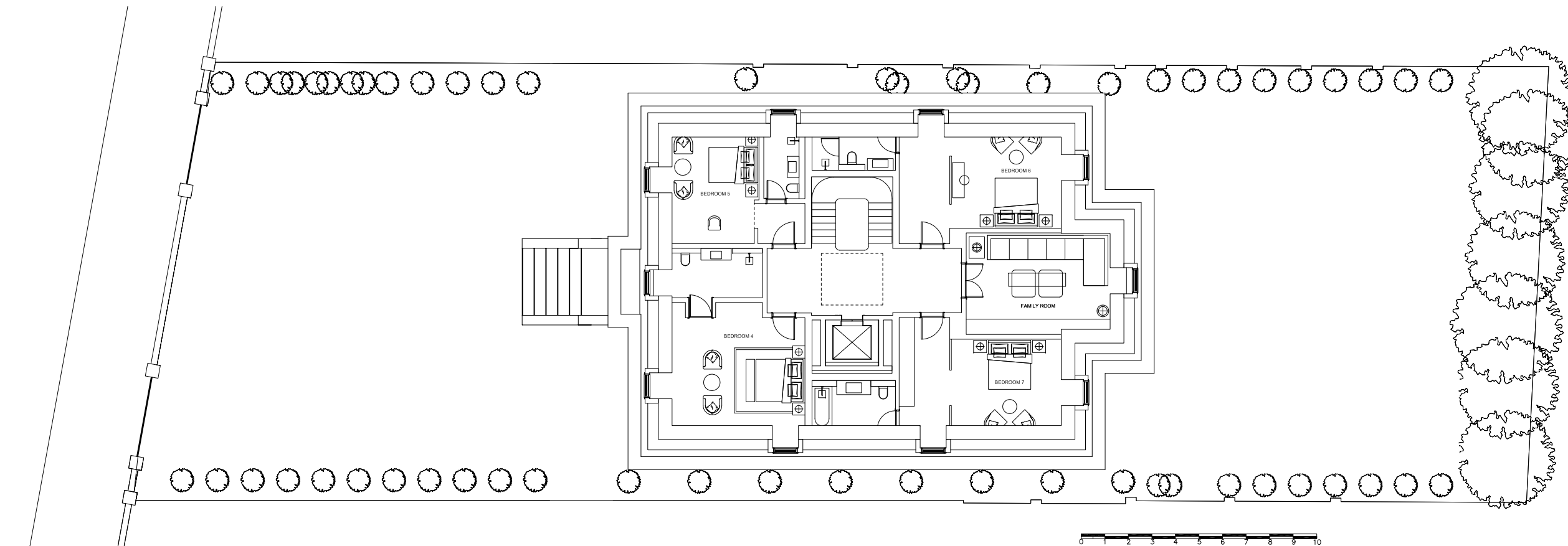
KSRARCHITECTS
 KSR Architects LLP
 14 Gresham Street
 London EC2A 3DF
 t +44 (0)20 7892 5000
 www.ksrarchitects.com

Project:
 62 Avenue Road
 NW8 6HT

Title:
 First Floor Plan-
 As proposed

Date:	Drawn By:	Checked:
-------	-----------	----------

Scale: 1:100 @ A1 - 1:200 @ A3		
Project Ref: 19021	Drawing No: EZR-035	Revision: A



General notes:
 This drawing is copyright of KSR architects. This drawing must be read in conjunction with the Designer's Risk Assessment, specification and all other relevant documentation and drawings. KSR architects accept no liability for any expense, loss or damage of whatsoever nature and however arising from any variation made to this drawing or in the execution of the work to which it relates which has not been referred to them and their approval obtained.
 Do not scale from this drawing or the digital data, only figured dimensions are to be used. For Planning refer to linear scale.
 Check all dimensions on site prior to carrying out any works - advise any discrepancy

A	MIA APPLICATION	17.05.19	By: CHD
Rev	Notes	05.05.19	By: CHD

©KSR architects

KSRARCHITECTS
 KSR Architects LLP
 14 Grosvenor Street
 London W1W 0GD
 Email: info@ksrarchitects.com
 Tel: +44 (0)20 7662 5000
 Website: www.ksrarchitects.com

Project:
 62 Avenue Road
 NW8 6HT

Title:
 Second Floor Plan- Roof
 Plan- As Proposed

Date:	Drawn By:	Checked:
-------	-----------	----------

Scale: 1:100 @ A1 - 1:200 @ A3		
Project Ref: 19021	Drawing No: EZR-036	Revision: A



General notes:
 This drawing is copyright of KSR architects. This drawing must be read in conjunction with the Designer's Risk Assessment, specification and all other relevant documentation and drawings. KSR architects accept no liability for any expense, loss or damage of whatsoever nature and however arising from any variation made to this drawing or in the execution of the work to which it relates which has not been referred to them and their approval obtained.
 Do not scale from this drawing or the digital data, only figured dimensions are to be used. For Planning refer to linear scale.
 Check all dimensions on site prior to carrying out any works - advise any discrepancy

A	MMA Application	17.05.19	By	Chid
Rev	Notes	06.06.19	By	Chid

© KSR architects

KSRARCHITECTS
 KSR Architects LLP
 14 Greenhead Street
 London NW1 0AQ
 info@ksrarchitects.com
 t: +44 (0)20 7682 5000
 www.ksrarchitects.com

Project:
 62 Avenue Road
 NW8 6HT

Title:
 Front Elevation-
 As Proposed

Date:	Drawn By:	Checked:
Scale: 1:100 @ A1 - 1:200 @ A3		
Project Ref: 19021	Drawing No: EZR-037	Revision: A



General notes:

This drawing is copyright of KSR architects. This drawing must be read in conjunction with the Designer's Risk Assessment, specification and all other relevant documentation and drawings. KSR architects accept no liability for any expense, loss or damage of whatsoever nature and however arising from any variation made to this drawing or in the execution of the work to which it relates which has not been referred to them and their approval obtained.
Do not scale from this drawing or the digital data, only figured dimensions are to be used. For Planning refer to linear scale.
Check all dimensions on site prior to carrying out any works – advise any discrepancy

A	MMA APPLICATION	17.05.19	By	Chkd
Rev	Notes	05.06.19	By	Chkd

©KSR architects

KSRARCHITECTS
KSR Architects LLP
 14 Greathead Street
 London NW8 6HT
 mail@ksrarchitects.com
 t +44 (0)20 7982 5000
 www.ksrarchitects.com

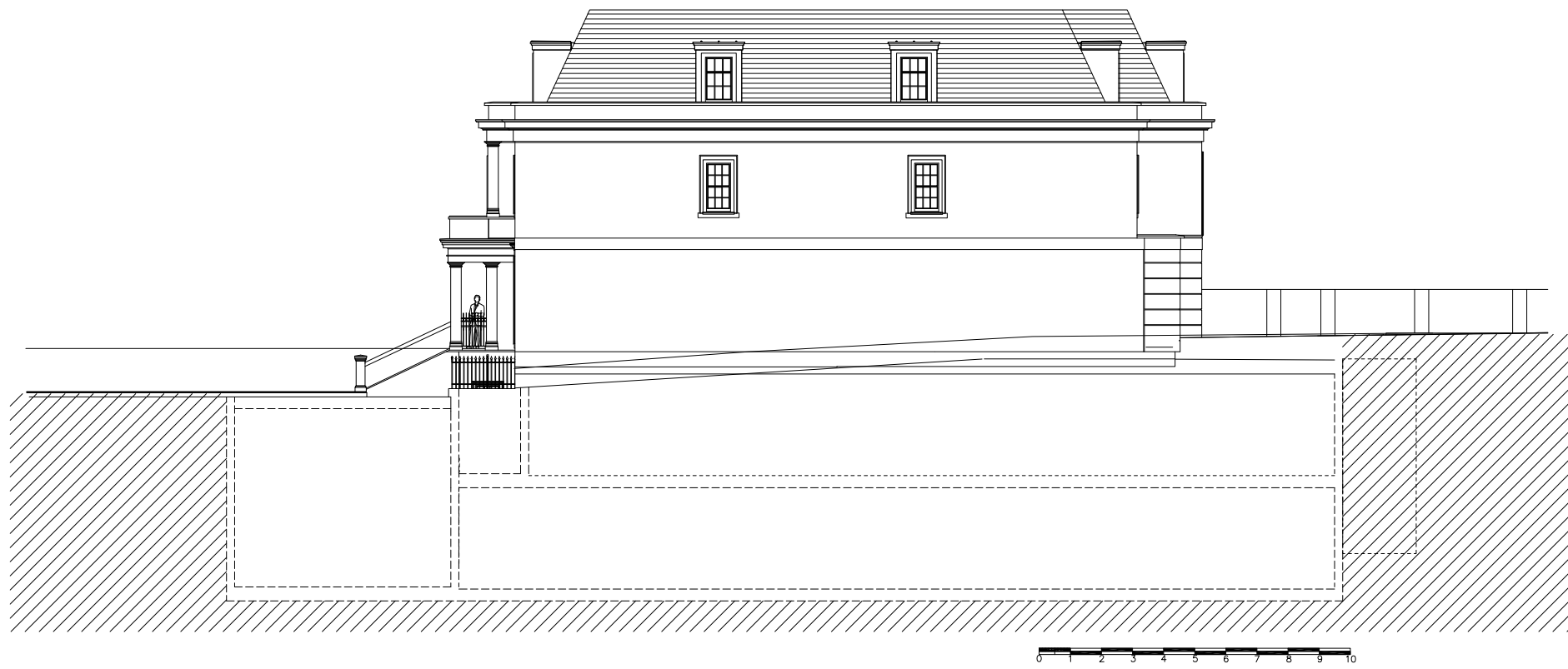
Project:
 62 Avenue Road
 NW8 6HT

Title:
 Rear Elevation-
 As Proposed

Date:	Drawn By:	Checked:
-------	-----------	----------

Scale: 1:100 @ A1 - 1:200 @ A3

Project Ref:	Drawing No:	Revisions:
19021	EZR-038	A



General notes:
 This drawing is copyright of KSR architects. This drawing must be read in conjunction with the Designer's Risk Assessment, specification and all other relevant documentation and drawings. KSR architects accept no liability for any expense, loss or damage of whatsoever nature and however arising from any variation made to this drawing or in the execution of the work to which it relates which has not been referred to them and their approval obtained.
 Do not scale from this drawing or the digital data, only figured dimensions are to be used. For Planning refer to linear scale.
 Check all dimensions on site prior to carrying out any works – advise any discrepancy

A	MMA APPLICATION	17.05.19	By	Chid
Rev	Notes	05.05.19	By	Chid

©KSR architects

KSRARCHITECTS
 KSR Architects LLP
 14 Grosvenor Street
 London W1W 0AQ
 email@ksrarchitects.com
 t +44 (0)20 7992 5000
 www.ksrarchitects.com

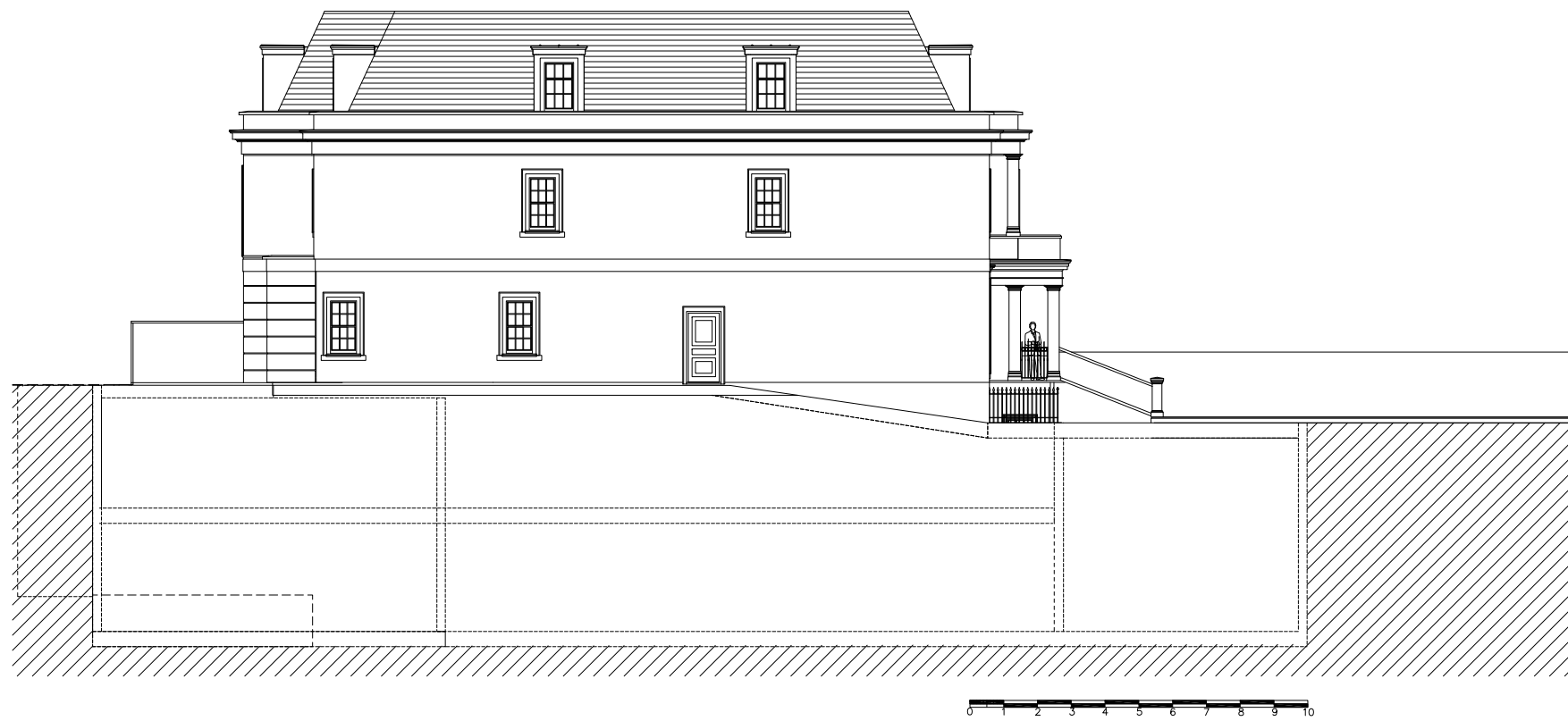
Project:
 62 Avenue Road
 NW8 6HT

Title:
 Side Elevation-As
 Proposed

Date:	Drawn By:	Checked:
-------	-----------	----------

Scale: 1:100 @ A1 - 1:200 @ A3

Project Ref:	Drawing No:	Revision:
19021	EZR-039	A



General notes:
 This drawing is copyright of KSR architects. This drawing must be read in conjunction with the Designer's Risk Assessment, specification and all other relevant documentation and drawings. KSR architects accept no liability for any expense, loss or damage of whatsoever nature and however arising from any variation made to this drawing or in the execution of the work to which it relates which has not been referred to them and their approval obtained.
 Do not scale from this drawing or the digital data, only figured dimensions are to be used. For Planning refer to linear scale.
 Check all dimensions on site prior to carrying out any works - advise any discrepancy

A	MIA Application	17.05.19	By	Chid
Rev	Notes	05.05.19	By	Chid

©KSR architects

KSRARCHITECTS
 KSR Architects LLP
 14 Greenfield Street
 London NW1 0ND
 email@ksrarchitects.com
 t +44 (0)20 7992 0000
 www.ksrarchitects.com

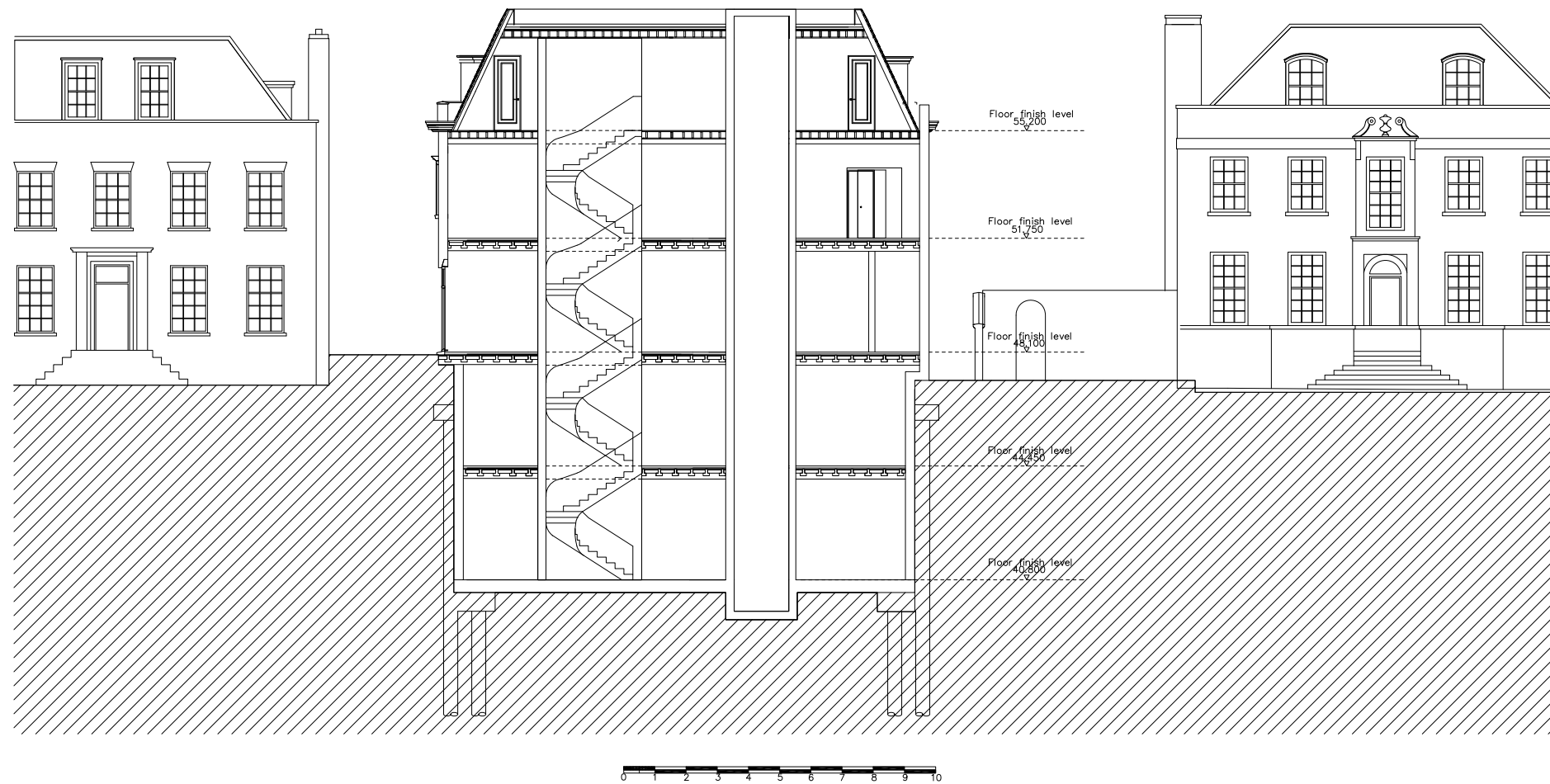
Project:
 62 Avenue Road
 NW8 6HT

Title:
 Side Elevation- As
 Proposed

Date:	Drawn By:	Checked:
-------	-----------	----------

Scale: 1:100 @ A1 - 1:200 @ A3

Project Ref:	Drawing No:	Revision:
19021	EZR-040	A



General notes:
 This drawing is copyright of KSR architects. This drawing must be read in conjunction with the Designer's Risk Assessment, specification and all other relevant documentation and drawings. KSR architects accept no liability for any expense, loss or damage of whatsoever nature and however arising from any variation made to this drawing or in the execution of the work to which it relates which has not been referred to them and their approval obtained.
 Do not scale from this drawing or the digital data, only figured dimensions are to be used. For Planning refer to linear scale.
 Check all dimensions on site prior to carrying out any works – advise any discrepancy

A	MIA APPLICATION	21.05.19	By: CHd
Rev	Notes	05.05.19	By: CHd

©KSR architects

KSRARCHITECTS
 KSR Architects LLP
 14 Greenhead Street
 London NW1 0ND
 email@ksrarchitects.com
 t +44 (0)20 7952 5000
 www.ksrarchitects.com

Project:
 62 Avenue Road
 NW8 6HT

Title:
 Section A-A-
 As Proposed

Date:	Drawn By:	Checked:
-------	-----------	----------

Scale: 1:100 @ A1 - 1:200 @ A3		
Project Ref: 19021	Drawing No: EZR-041	Revision: A