

INSTALL NEW 990 x 990MM ILLUMINATED LIDL FASCIA SIGN. CONTRACTOR TO PROVIDE ADDITIONAL SUPPORT FIXINGS FOR SIGNAGE INSTALLATION AS NECESSARY. MAKE CONNECTIONS TO BMS AND DISTRIBUTION BOARD.

LIDL TO INSTALL PIGEON SPIKES TO TOP OF SIGNAGE.

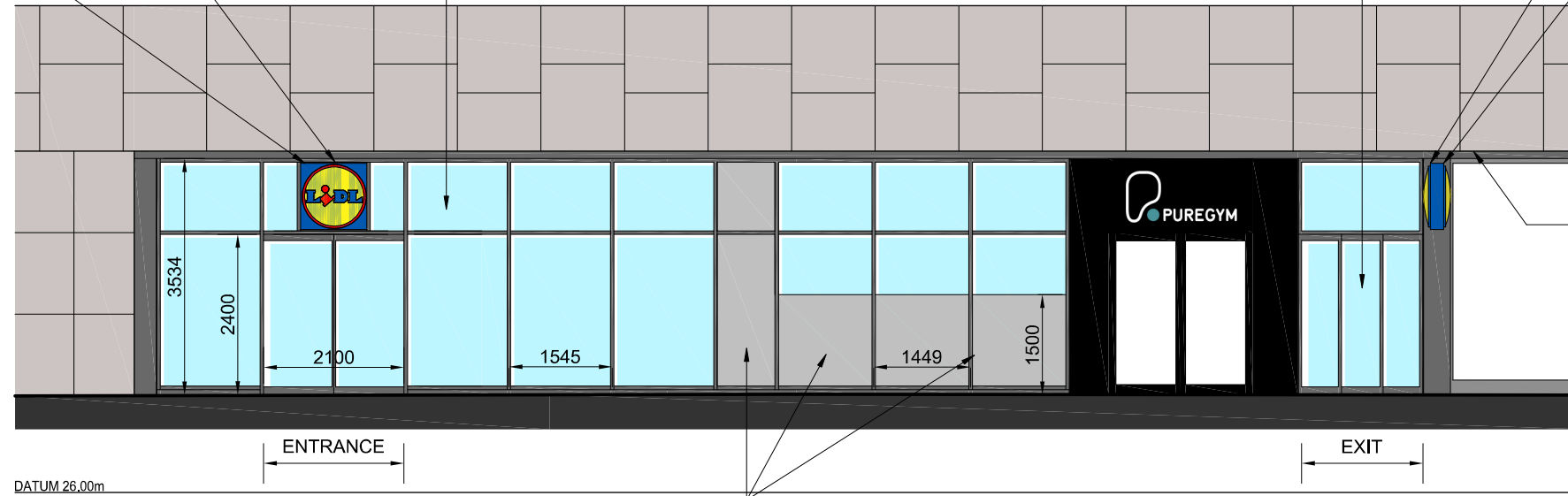
CAREFULLY REMOVE EXISTING SHOPFRONT GLAZING. INSTALL NEW FULL HEIGHT SHOPFRONT GLAZING AND ENTRANCE SCREENS WITH AUTOMATED SLIDING DOORS TO LIDL CORPORATE SPECIFICATION. FRAME COLOUR: GRAPHITE GREY, RAL 7024. REFER TO LIDL DRAWINGS LD(13)-SG-01, LD(13)-SG-02 AND LD(13)-EL-01 FOR DETAILS. SHOPFRONT GLAZING TO INCLUDE MATCHING CLADDING TO STRUCTURAL POSTS.

CAREFULLY REMOVE EXISTING SHOPFRONT GLAZING. INSTALL NEW FULL HEIGHT SHOPFRONT GLAZING AND EXIT SCREENS WITH AUTOMATED SLIDING DOORS TO LIDL CORPORATE SPECIFICATION. AUTO DOORS TO BE DIVIDED INTO THREE LEAVES, AND TO ACHIEVE MINIMUM CLEAR OPENING WIDTH OF 1165MM. FRAME COLOUR: GRAPHITE GREY, RAL 7024. REFER TO LIDL DRAWINGS LD(13)-SG-01, LD(13)-SG-02 AND LD(13)-EL-01 FOR DETAILS.

INSTALL NEW 990 x 990MM ILLUMINATED LIDL PROJECTING SIGN. CONTRACTOR TO PROVIDE ADDITIONAL SUPPORT FIXINGS FOR SIGNAGE INSTALLATION AS NECESSARY. MAKE CONNECTIONS TO BMS AND DISTRIBUTION BOARD.

LIDL TO INSTALL PIGEON SPIKES TO TOP OF SIGNAGE.

SOFFIT TO BE PAINTED PURE WHITE, RAL 9010 BY LIDL



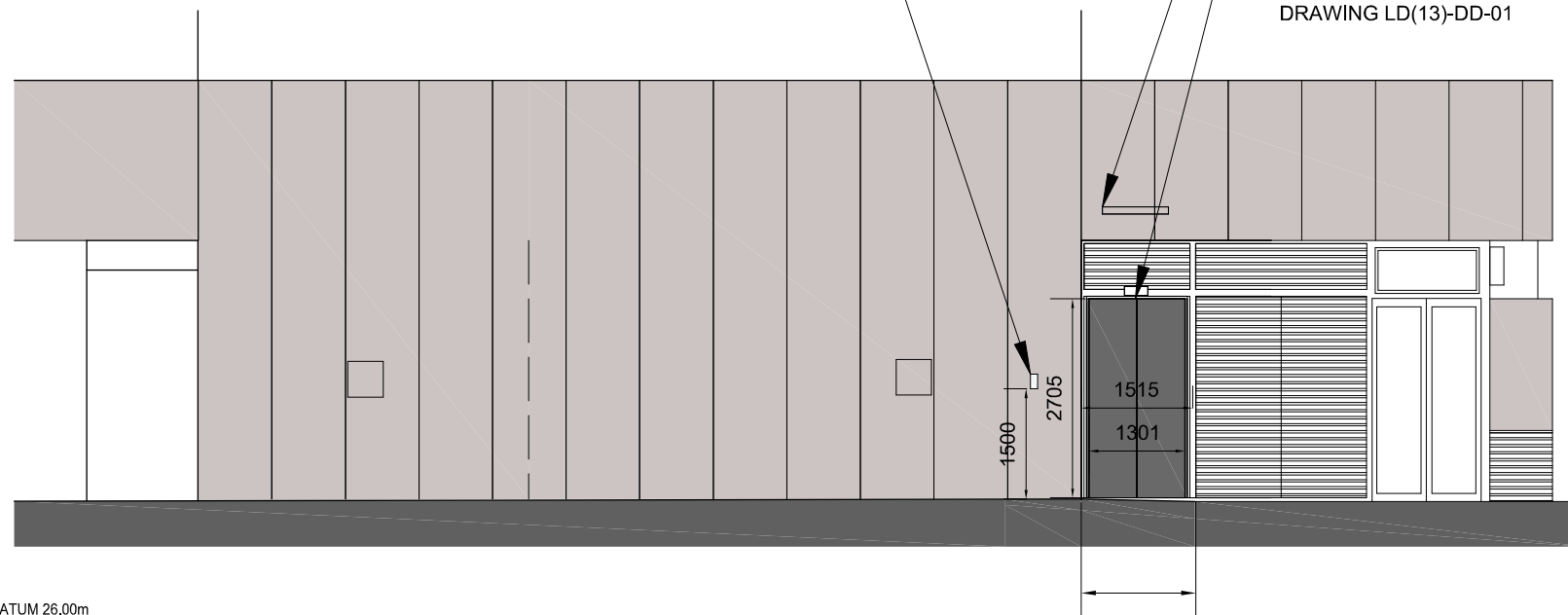
ELEVATION TO TOTTENHAM COURT ROAD

FROSTED GLASS BY LIDL TO GREY SHADED AREAS

LIDL TO SUPPLY AND INSTALL STAINLESS STEEL RECESSED DRIVER'S ALARM FOB BOX TO LIDL SPECIFICATION. FORM WALL RECESS AND SUPPLY DUCTING. RECESSED CONDUIT TO BE PROVIDED FROM BOX POSITION TO LIDL DEMISE CEILING VOID, NO SURFACE MOUNTED CONDUIT WILL BE ACCEPTED. REFER TO LIDL DRAWING LD(13)-CD-01 FOR DETAILS.

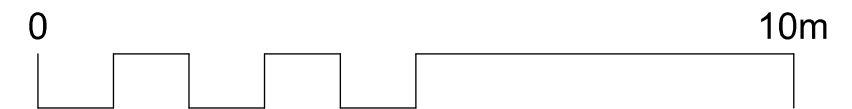
LIDL TO INSTALL NEW WALL MOUNTED LIGHTING ABOVE DOOR OPENING.

LIDL TO REMOVE EXISTING EXTERNAL DOORS AND FRAME. LIDL TO INSTALL NEW DOORSET TO LIDL SPEC TYPE A (DOUBLE) - NON STANDARD WIDTH TO SUIT EXISTING OPENING. REFER TO LIDL SPEC DRAWING LD(13)-DD-01



ELEVATION TO BEAUMONT PLACE (REAR)

LIDL PROPOSED REAR ACCESS



**& POOLE PATTLE** chartered architects  
Tel: 01473 230500 Fax: 01473 231949 E-Mail: [enquiries@poolepattle.co.uk](mailto:enquiries@poolepattle.co.uk)  
 5 OBSERVATION COURT, 64 PRINCES STREET, IPSWICH, SUFFOLK, IP1 1RY

|          |                                   |      |          |       |            |
|----------|-----------------------------------|------|----------|-------|------------|
| Project  | LIDL, 145 TOTTENHAM COURT ROAD W1 | Date | DEC 2018 | Scale | 1:100 @ A3 |
| Drawings | ELEVATIONS CONSTRAINTS 1          | 3854 | 110      | K     |            |

WORKING WITH

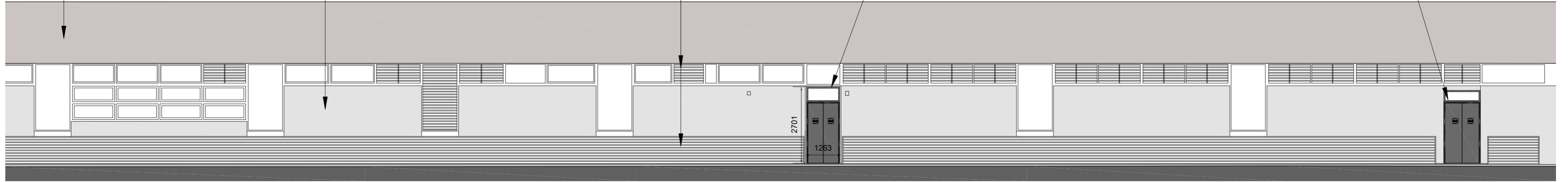
**KLH** architects  
 The Old Steelyard, Poplar Lane  
 Sproughton, Ipswich, IP8 3HL  
 t.01473 689532  
[klh@klharchitects.com](mailto:klh@klharchitects.com)  
[www.klharchitects.com](http://www.klharchitects.com)

EXISTING MARBLE CLADDING

EXISTING SMALL FORMAT CERAMIC TILES

EXISTING LOUVRES

LIDL TO REMOVE EXISTING EXTERNAL DOORS AND FRAME. LIDL TO INSTALL NEW DOORSET TO LIDL SPEC TYPE A (DOUBLE) - NON STANDARD WIDTH TO SUIT EXISTING OPENING. REFER TO LIDL SPEC DRAWING LD(13)-DD-01 WITH GLAZED FANLIGHT OVER

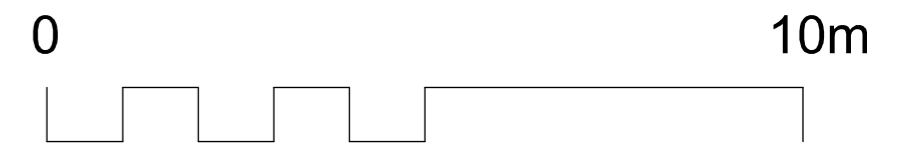


DATUM 26.00m

ELEVATION TO BEAUMONT PLACE (SIDE)

LIDL ALTERNATIVE SERVICE ACCESS

LIDL PROPOSED ESCAPE DOORS



& POOLE chartered architects  
PATTLE

|         |                                   |      |          |       |            |
|---------|-----------------------------------|------|----------|-------|------------|
| Project | LIDL, 145 TOTTENHAM COURT ROAD W1 | Date | DEC 2018 | Scale | 1:100 @ A2 |
| Drawing | ELEVATIONS CONSTRAINTS 2          | 3854 | 111      | C     |            |

WORKING WITH

**KLH** architects  
The Old Steelyard, Poplar Lane  
Sproughton, Ipswich, IP8 3HL  
t.01473 689532  
klh@klharchitects.com  
www.klharchitects.com