
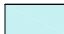
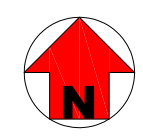




### AREA SCHEDULE

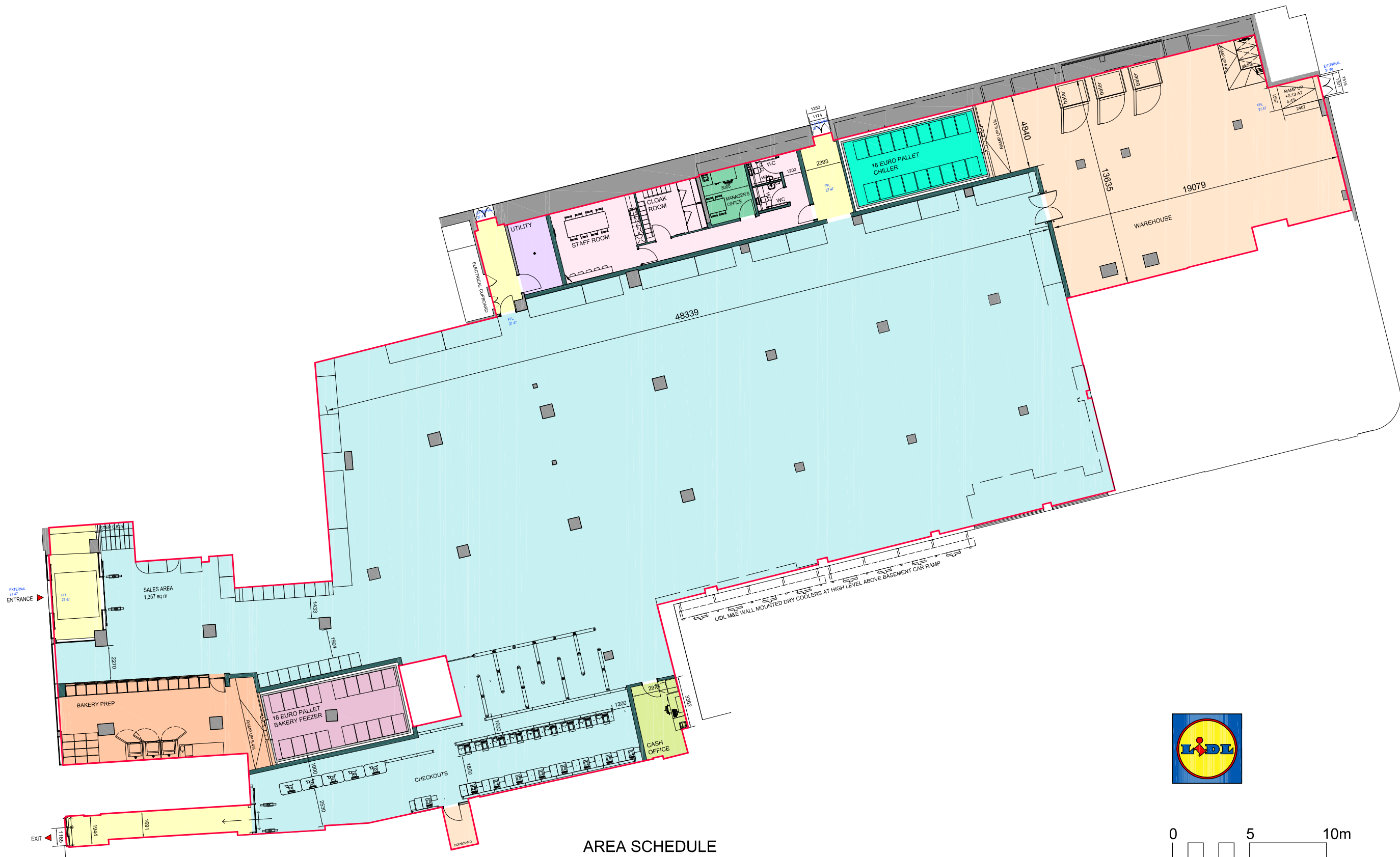
	Footprint at street level of Landlord's ownership		
	GIA	1,977	sq m
	Sales area	1,357	sq m
<b>WAREHOUSE</b>			
	Warehouse	260	sq m
	Bakery warehouse	37	sq m
	Additional chillers	37	sq m
	<b>Total Warehouse</b>	<b>334</b>	<b>sq m</b>
<b>ANCILLARY AREA</b>			
	Bakery prep	70	sq m
	Cash office	14	sq m
	Welfare	66	sq m
	Manager's office	10	sq m
	Utility	12	sq m
	Circulation / plant	67	sq m
	<b>Total Ancillary</b>	<b>239</b>	<b>sq m</b>
	Internal partitions	47	sq m
	Public highway		approximate extent



**& POOLE** chartered architects  
**PATTLE**

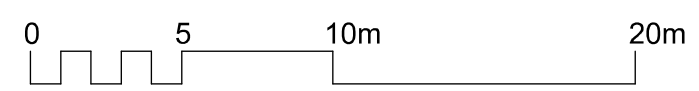
LIDL, 145 TOTTENHAM COURT ROAD W1		DATE: AUG 2018	SCALE: 1:500 @ A3
DRAWN BY: SITE PLAN AS PROPOSED		CHECKED BY: 3854	DATE: 102

WORKING WITH  
**KLH** architects  
The Old Steelyard, Poplar Lane  
Sproughton, Ipswich, IP8 3HL  
t.01473 689532  
klh@klharchitects.com  
www.klharchitects.com



**AREA SCHEDULE**

GIA	1,977	sq m	ANCILLARY AREA		
Sales area	1,357	sq m	Bakery prep	70	sq m
WAREHOUSE			Cash office	14	sq m
Warehouse	260	sq m	Welfare	66	sq m
Bakery warehouse	37	sq m	Manager's office	10	sq m
Additional chillers	37	sq m	Utility	12	sq m
Total Warehouse	334	sq m	Circulation / plant	67	sq m
			Total Ancillary	239	sq m
			Internal partitions, voids etc	47	sq m



**& POOLE PATTLE** chartered architects  
 TEL: 01473 23090 FAX: 01473 23150 EMAIL: info@poolepattle.co.uk  
 5 OBSERVATION COURT, 84 PRINGES STREET, BRIMINGHAM, SUFFOLK, IP1 1YU

Project	LIDL, 145 TOTTENHAM COURT ROAD W1	Date	AUG 2018	Scale	1:250 @ A3
Drawing	GROUND FLOOR PLAN AS PROPOSED	3854	101	S	

WORKING WITH  
**KLH architects**  
 The Old Steelyard, Poplar Lane  
 Sroughton, Ipswich, IP8 3HL  
 t.01473 689532  
 klh@klharchitects.com  
 www.klharchitects.com