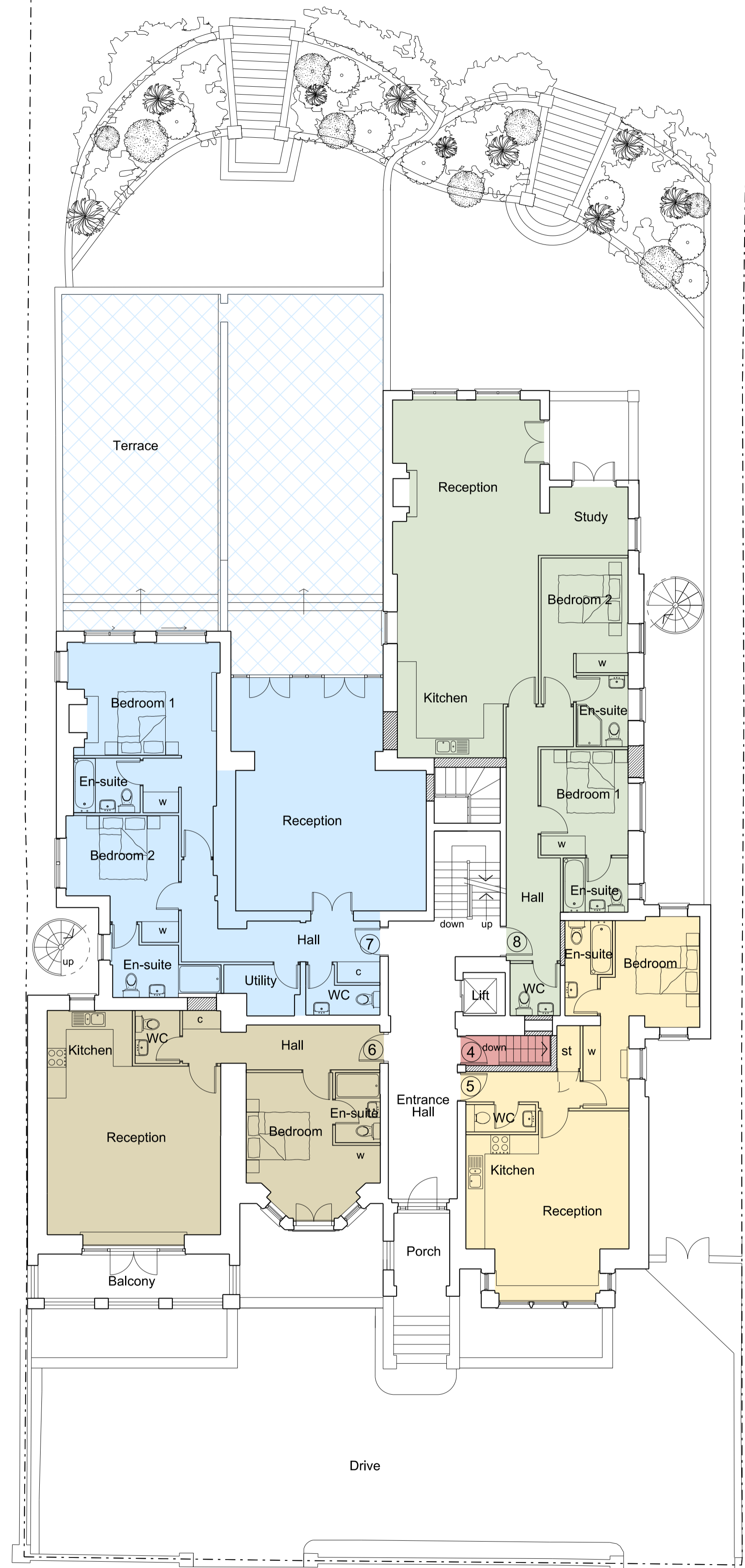


Proposed Lower Ground Floor Plan



Proposed Ground Floor Plan

Notes:

Do not scale from this drawing except for Planning purposes.
Work from figured dimensions only.
All dimensions to be checked on site prior to commencement of work.

Schedule of Gross Internal Areas:

Apartment 1 - 1 Bedroom	= 109.0 s.m.	(1,173 s.f.)
Apartment 2 - 1 Bedroom	= 125.8 s.m.	(1,354 s.f.)
Terrace	= 36.7 s.m.	(395 s.f.)
Apartment 3 - 2 Bedroom	= 106.5 s.m.	(1,146 s.f.)
Apartment 4 - 1 Bedroom	= 57.9 s.m.	(623 s.f.)
Apartment 5 - 1 Bedroom	= 51.8 s.m.	(557 s.f.)
Apartment 6 - 1 Bedroom	= 65.0 s.m.	(700 s.f.)
Apartment 7 - 2 Bedroom	= 106.4 s.m.	(1,145 s.f.)
Terrace	= 112.0 s.m.	(1,205 s.f.)
Apartment 8 - 2 Bedroom	= 99.2 s.m.	(1,067 s.f.)

Revisions:

- B: (02.11.13) Window to Bed 1, Appt. 8 increased to 1600 wide
- A: (22.10.13) Apartment 3 layout and area amended & escape staircase revised accordingly

Project:

Proposed Basement Extension and Internal Alterations and Refurbishment of
51 Fitzjohn's Avenue
London NW3 6PH

Title: Proposed Lower Ground & Ground Floor Plans

Scale: 1:100 @ A1

Date: April 2013

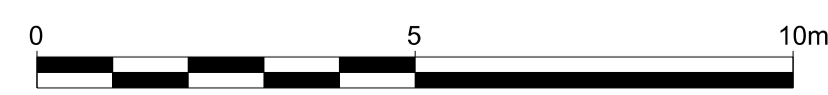
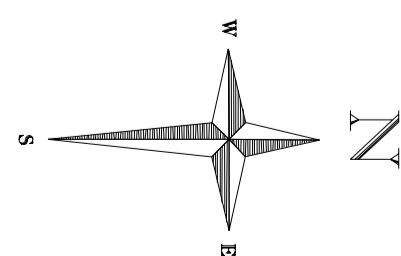
Oakley Hough.

The Barn, Stebbing Farm
Fishers Green, Stevenage,
Hertfordshire SG1 2JB

Tel: 01438 745288
Mobile: 07710 549 270
e-mail: john@oakleyhough.co.uk

Drawing Number.

885/11 B



Scale 1:100 @ A1