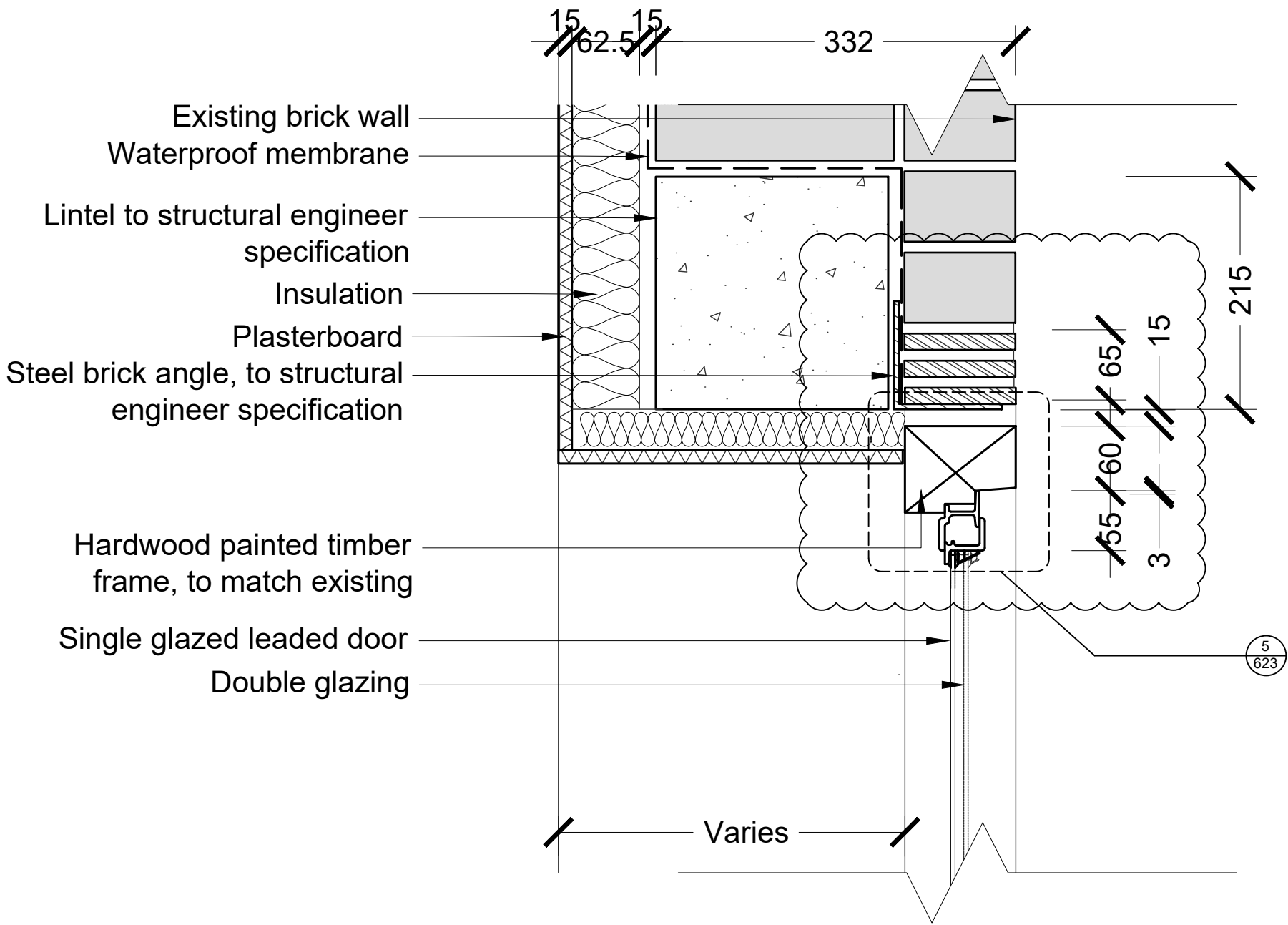
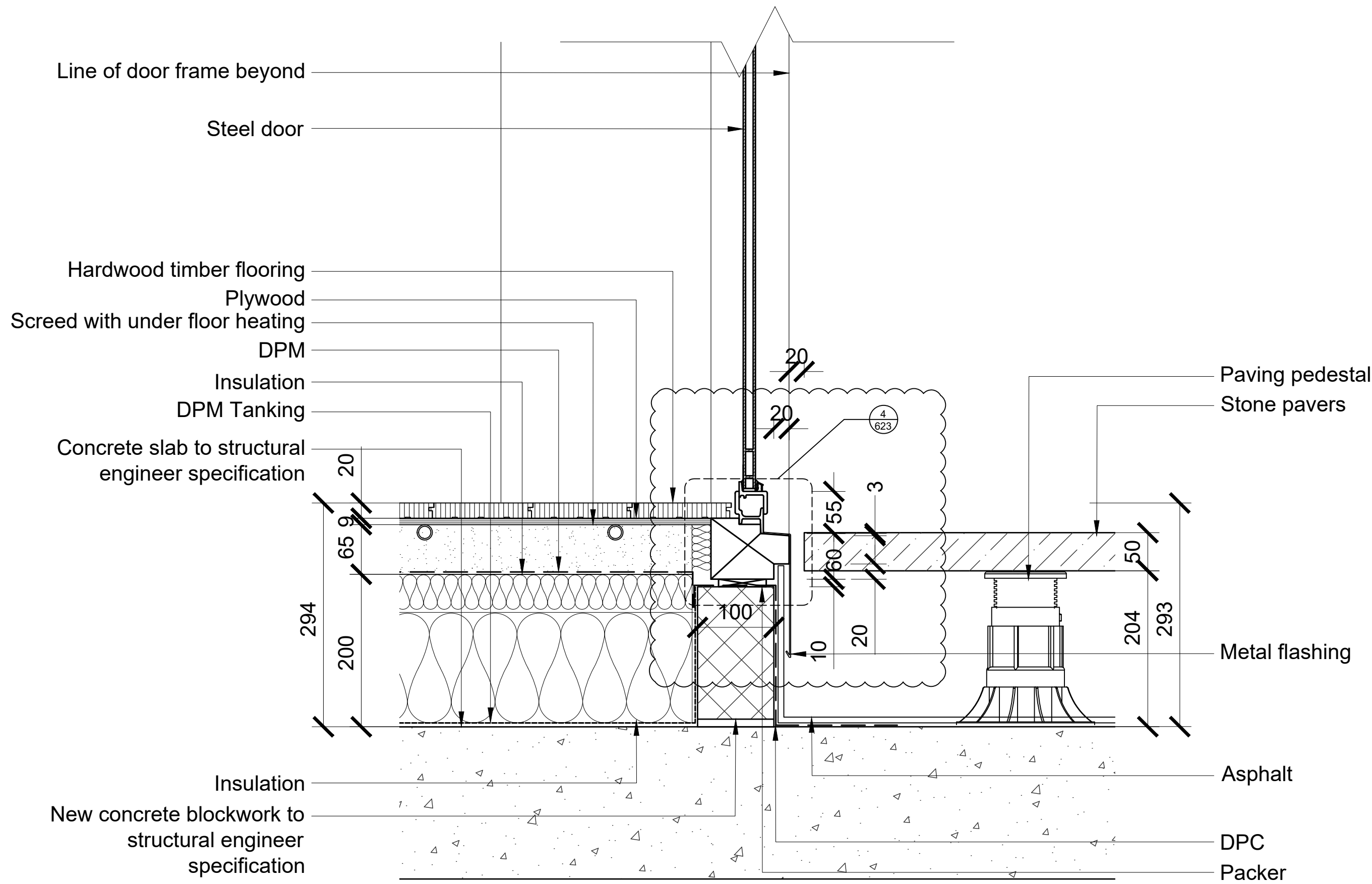


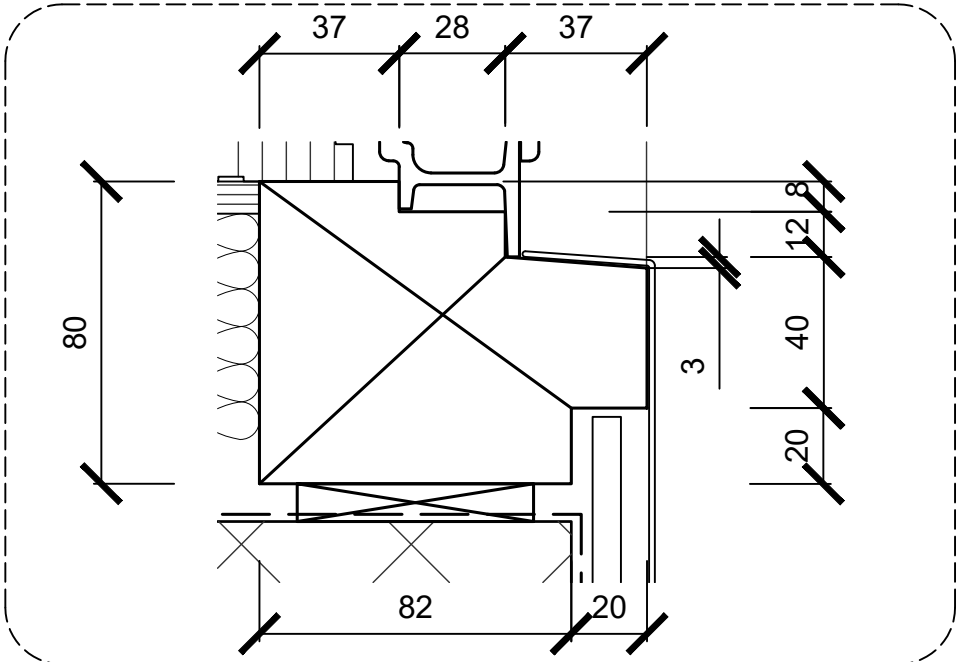
1 - DOOR HEAD DETAIL
PROPOSED BUILDING CONDITIONS



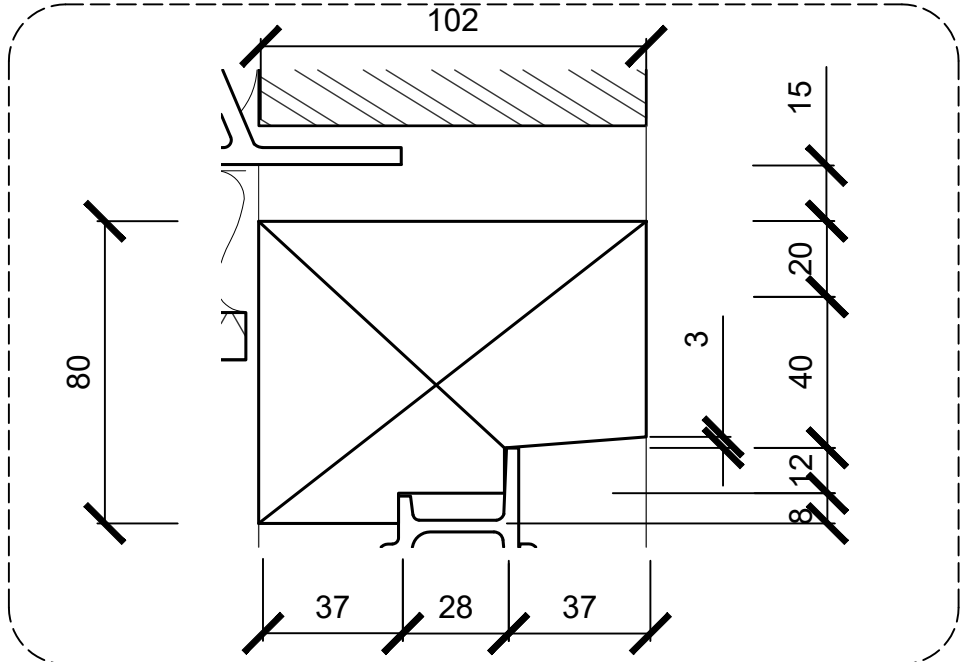
2 - DOOR HEAD DETAIL
EXISTING BUILDING CONDITIONS



3 - DOOR SILL DETAIL
EXISTING/NEW BUILD CONDITIONS



4 - SILL PROFILE DIMENSIONS
1:2 @ A1



5 - HEAD PROFILE DIMENSIONS
1:2 @ A1

List of changes:

- Door frame profile update

Revisions		Revisions		Revisions		Revisions		Revisions	
Rev	Date	By	Description	Checked	Approved	Rev	Date	By	Description
P1	23.03.18	RB	Planning Conditions Discharge	JM	RH				
P2	21.08.18	RB	Planning Amendments	JM	RH				
P3	12.08.18	TS	Planning Amendments	JM	RH				
P4	04.10.18	TS	Window Glazing Amendment	JM	RH				
P5	27.02.19	TS	Sill and Frame Amendment	JM	RH				
P6	06.06.19	QJ	NMA Re-Issue	ABF	RH				

Architect / Originator: Tate Harmer	Unit G182, Stamford Works, 3 Gifford Street, London N16 6JH Tel: +44 (0)207 241 7481 Email: studio@tateharmer.com	Do not scale. All dimensions to be checked on site. This drawing is copyright.
Client: Platinum Land	8 Querpel House, 1 Duke of York Square, Kings Road, London, SW3 4LY	Date of Origin: 28.11.17 Drawn By: TS
Project: Belsize Park Firestation		Scale: 1:5
Drawing Title: TYPICAL DOOR SECTION DETAILS		Drawing Status: Planning
Client Sign Off:	Drawing Number: BFS THA PR AL 623 P6	Revision