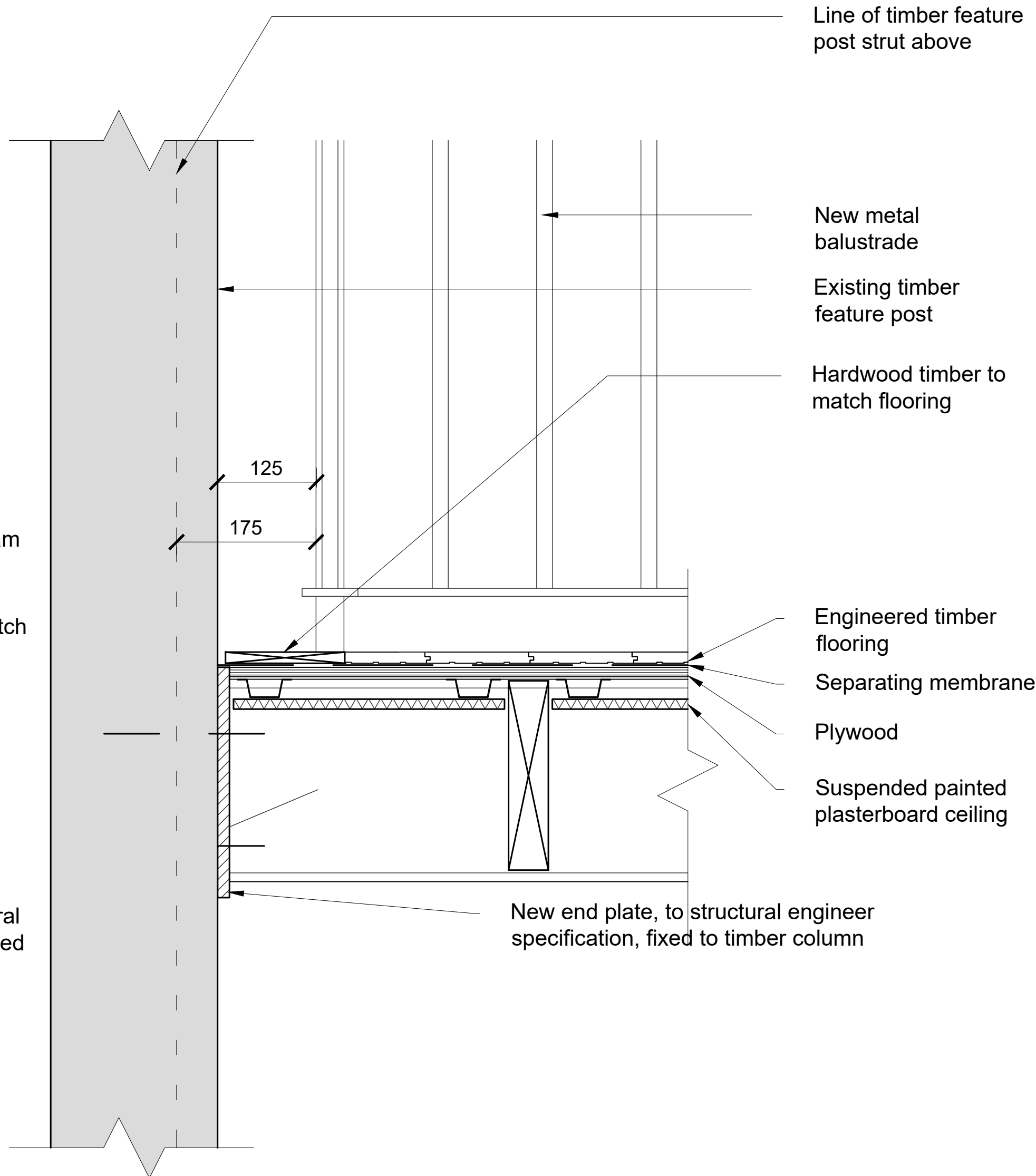
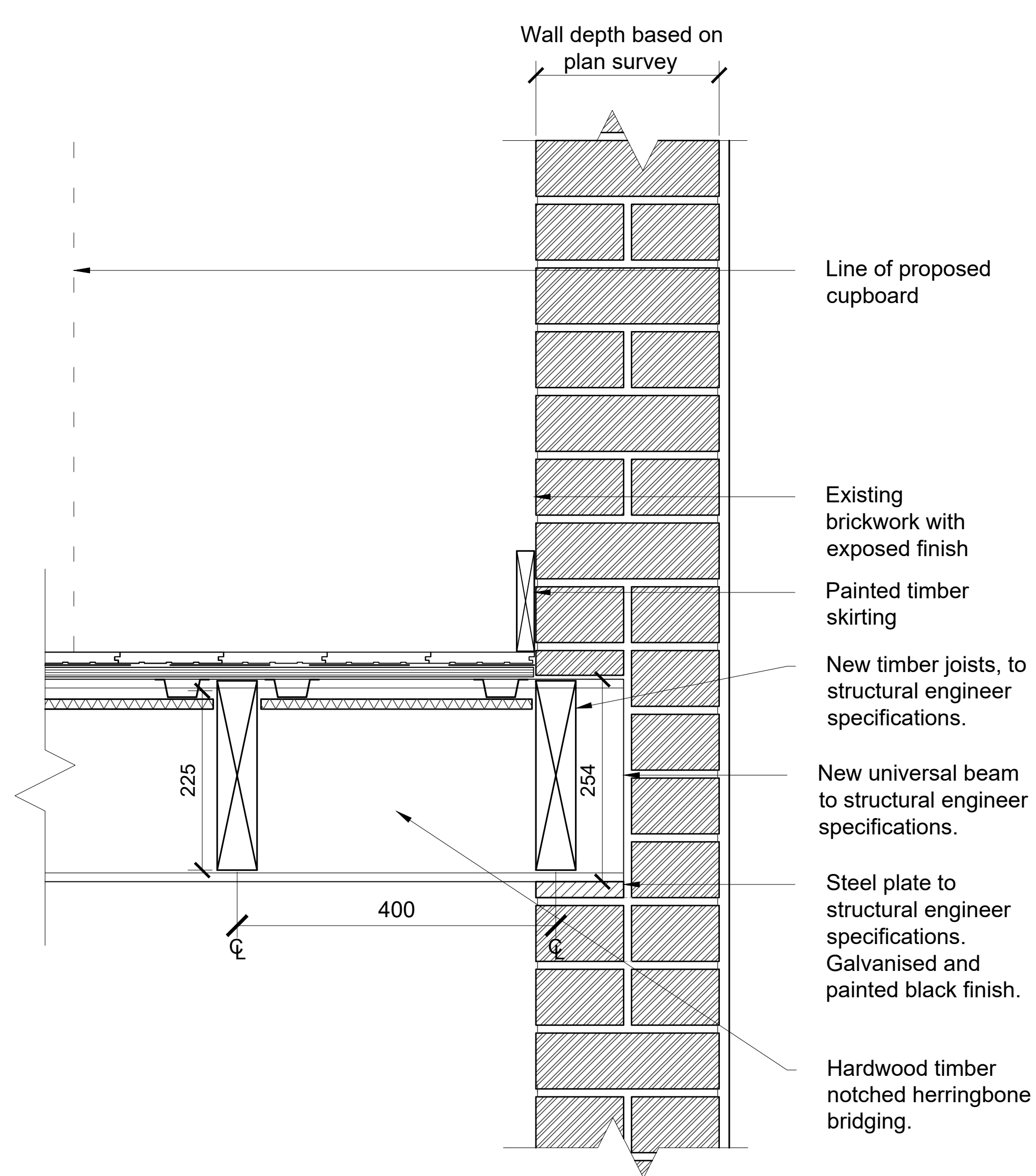


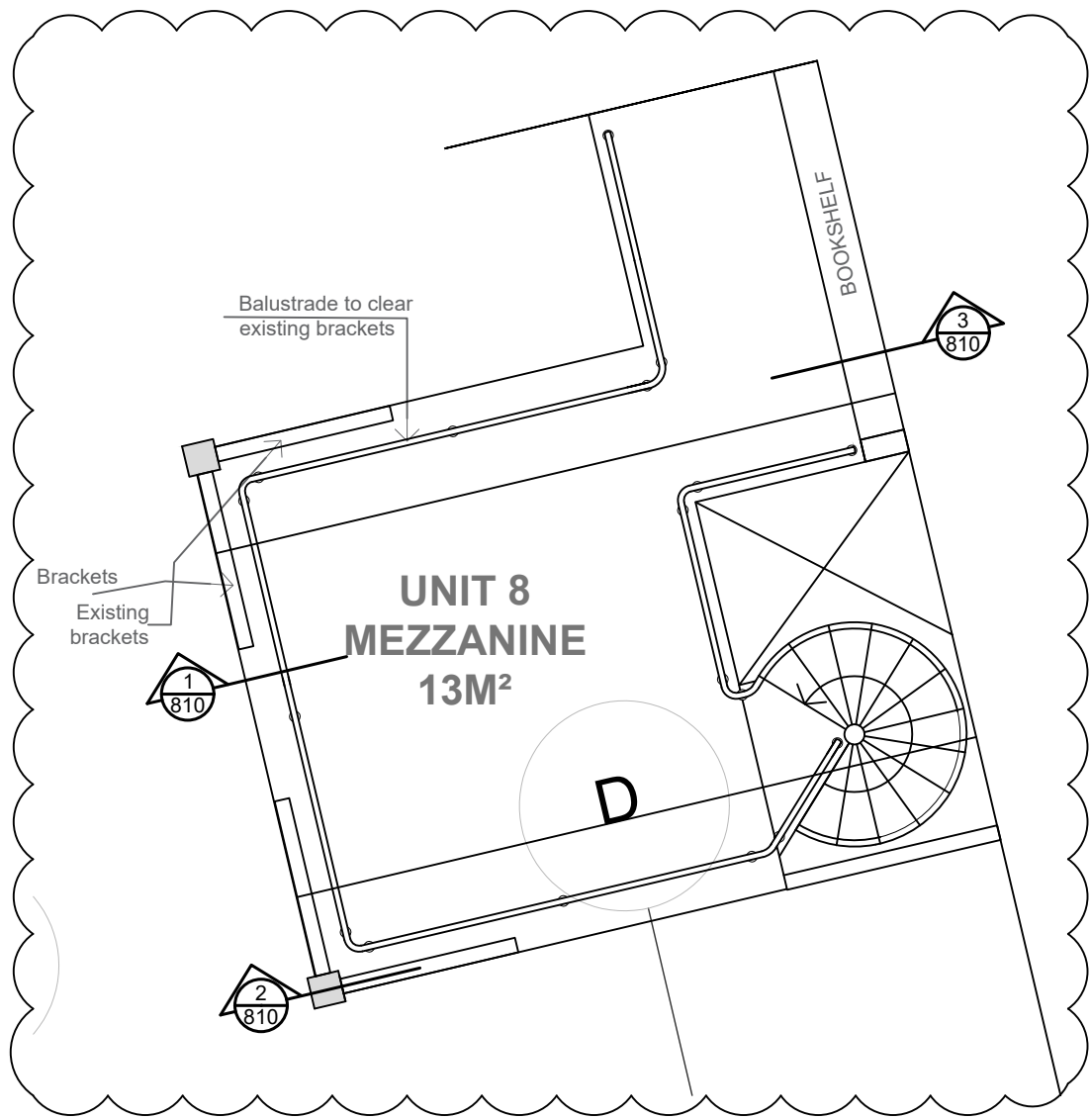
**1 - MEZZANINE SECTION DETAIL:
BALUSTRADE AND MEZZANINE EDGE**



**2 - MEZZANINE SECTION DETAIL:
EXISTING TIMBER COLUMN**



**3 - MEZZANINE SECTION DETAIL:
EXISTING WALL**



MEZZANINE KEY PLAN 1:50

List of changes from consented scheme:

- Mezzanine layout amendments

Revisions		Revisions		Revisions		Revisions		Revisions		Revisions	
Rev	Date	By	Description	Checked	Approved	Rev	Date	By	Description	Checked	Approved
P1	01.03.18	RB	Planning Conditions Discharge	JM	RH						
P2	08.03.18	RB	Planning Conditions Discharge	JM	RH						
P3	06.06.19	QJ	NMA Issue	ABF	RH						

A1
A3

Architect / Originator: Tate Harmer		Unit G182, Standard Works, 3 Gillet Street, London N16 5JH Tel: +44 (0)207 241 7481 Email: studio@tateharmer.com		Do not scale. All dimensions to be checked on site. This drawing is copyright.	
Client: Platinum Land		8 Querpel House, 1 Duke of York Square, Kings Road, London, SW3 4LY		Date of Origin: 28.11.17	
Project: Belsize Park Firestation		Drawing Title: Apartment 8 Mezzanine Floor Detail		Drawn By: TS	
Drawing Number: BFS THA PR AL 810 P3		Revision: P3		Scale: 1:5	
Client Sign Off		Drawing Status: Planning			