

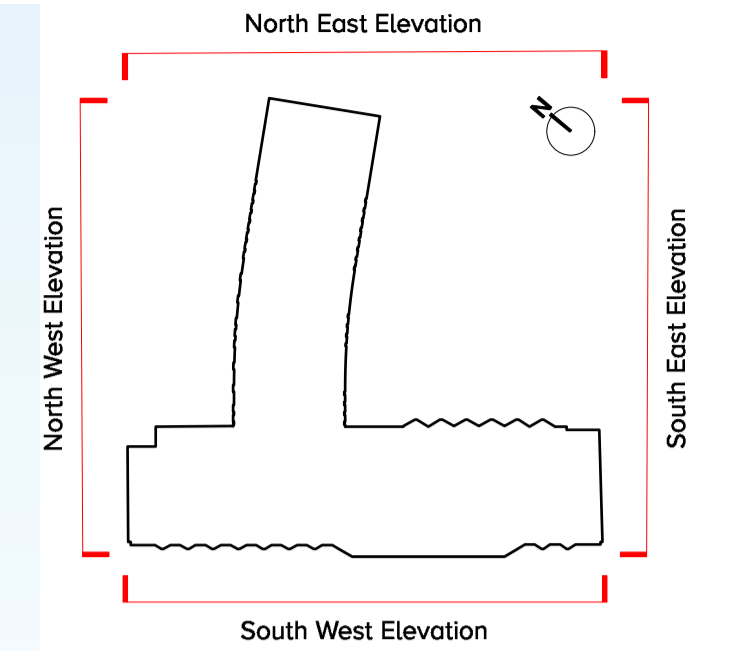
EXISTING MATERIALS KEY	
(A)	CONCRETE BAND WITH INSET MOSAIC
(B)	GLAZING
(C)	CONCRETE BAND
(D)	BRICKWORK
(E)	SINGLE GLAZED BEDROOM WINDOWS
(F)	METAL LOUVRES

Flues to be removed under separate application - 2019/2464/P

Existing Telephone Masts

Railing Level +62.59

Roof Level +61.64



Parapet Level +57.81

Tenth Floor Level +56.98

Ninth Floor Level +54.26

Eighth Floor Level +51.02

Seventh Floor Level +48.20

Sixth Floor Level +45.38

Fifth Floor Level +42.56

Fourth Floor Level +39.74

Third Floor Level +36.92

Second Floor Level +34.10

Mezzanine Floor Level +32.07

First Floor Level +29.68

Ground Floor Level +24.71

IMPERIAL HOTEL



Sources:
Survey supplied by Maltby Surveys. Original elevation data received April 2018, with updates October 2018 and March 2019.



Revisions: A LGB JLS 26/04/19 Planning Issue.

scale 1:100 @ A1 date 15/03/2019
drawn LGB checked JLS

1289 - P1031 - A

www.cube-designltd.co.uk T: 01425 481 999

cube_design ©