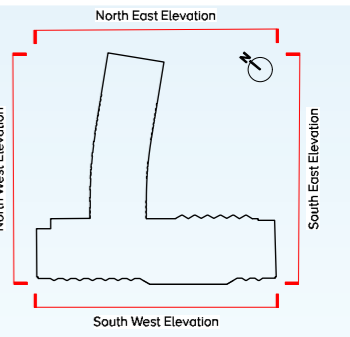
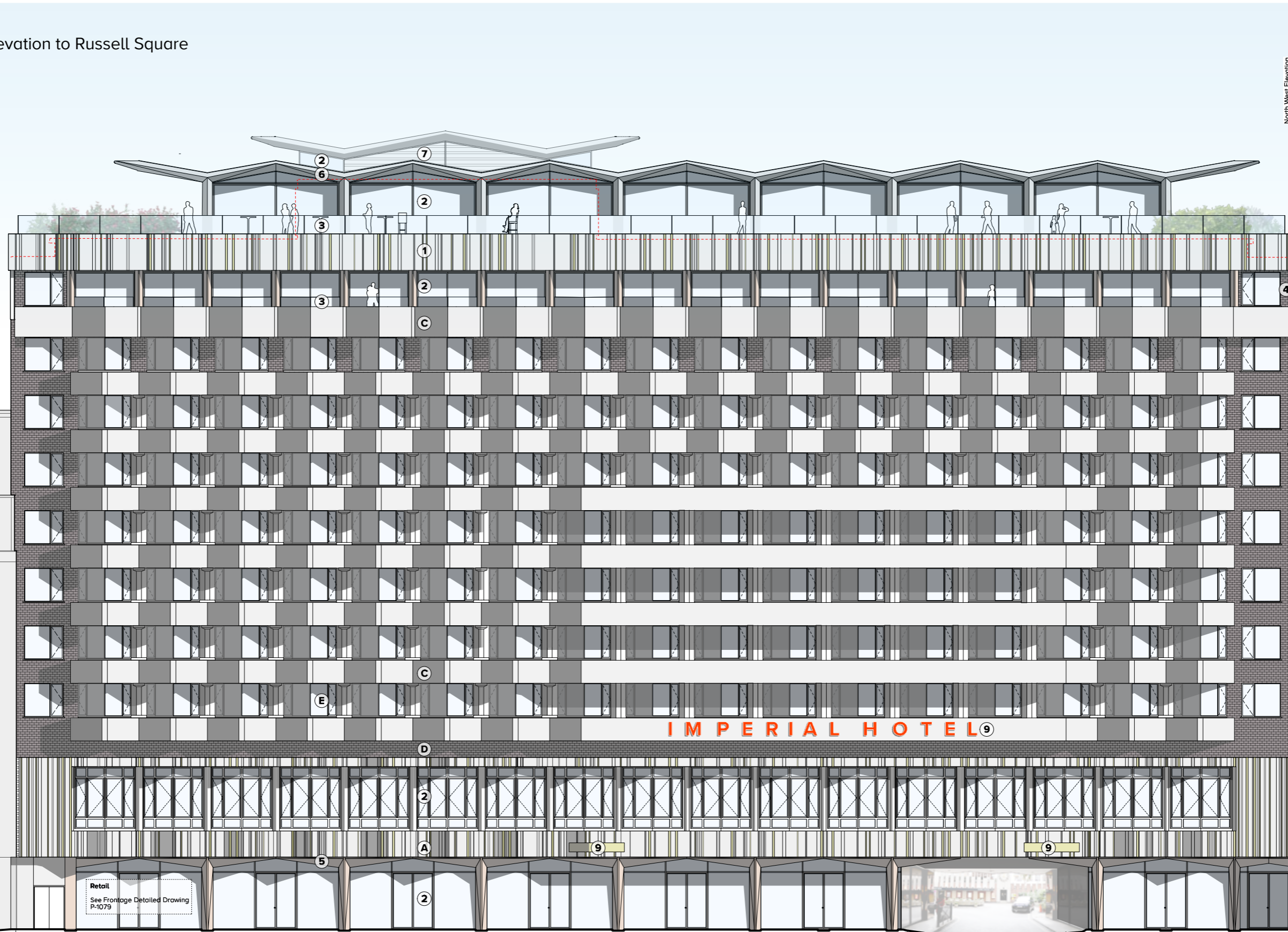


Elevation to Russell Square

- Proposed Rear Roofline
+ 63.97
- Proposed Front Roofline
+ 62.49
- Existing Roof Level/ Plant
+ 61.64
- Proposed Tenth Floor Level
+ 58.71
- Existing Level Raised Service Area
+ 58.70
- Proposed Ninth Floor Level
+ 54.26
- Eighth Floor Level
+ 51.02
- Seventh Floor Level
+ 48.20
- Sixth Floor Level
+ 45.38
- Fifth Floor Level
+ 42.56
- Fourth Floor Level
+ 39.74
- Third Floor Level
+ 36.92
- Second Floor Level
+ 34.10
- Mezzanine Floor Level
+ 32.07
- First Floor Level
+ 29.68
- Ground Floor Level
+ 24.71



EXISTING MATERIALS KEY

- (A) CONCRETE BAND WITH INSET MOSAIC
- (B) GLAZING
- (C) CONCRETE BAND
- (D) BRICKWORK
- (E) DOUBLE GLAZED ALUMINIUM WINDOWS (PART OF SEPARATE PLANNING APPLICATION 2019/2400/P)

PROPOSED MATERIALS KEY

- (1) GRC CLADDING PANELS WITH INSET MOSAIC
- (2) GLAZED PANELS
- (3) GLAZED BALUSTRADE
- (4) BRICKWORK
- (5) COPPER COLOURED CLADDING
- (6) CONCRETE CLADDING
- (7) METAL LOUVRES
- (8) ALUMINIUM BRISE SOLEIL
- (9) ILLUMINATED SIGNAGE

Retail
 See Frontage Detailed Drawing P-1079

IMPERIAL HOTEL 9

PRESIDENT HOTEL IMPERIAL HOTEL ENTRANCE WAY TO COURTYARD IMPERIAL HOTEL ST GILES INTERNATIONAL

Appendix 9.3
 Waste strategy

President Imperial Hotel

Material	Task	Item Description	Size	Quantity	Collections per week	Annual lifts
Dry Mixed Recyclables	Tip and return	Bespoke Compaction	24 yard	1	1	52
Cardboard	Tailift collection	Bale collection and Rebate - Monthly collection on moffet vehicle	400kg	1	1	52
Food Composting	Exchange	Wheeled Containers	120 litre	8	5	260
Fem Hygiene	Exchange	25 litre containers	25 litre	25	0	26
Glass	Exchange	Wheeled Containers	240 litre	6	3	156
Non Recycling	Empty on Site	Wheeled Containers	1100 litre	8	4	364

President Imperial Hotel

Department	Task	Item Description	Size	Quantity	Deliveries per week
Bars and restaurants	Delivery	Beer	Kegs	15	5
Bars and restaurants	Delivery	Bottles	Crates	25	5
Kitchen	Delivery	Various food	Pallet	3-5	25