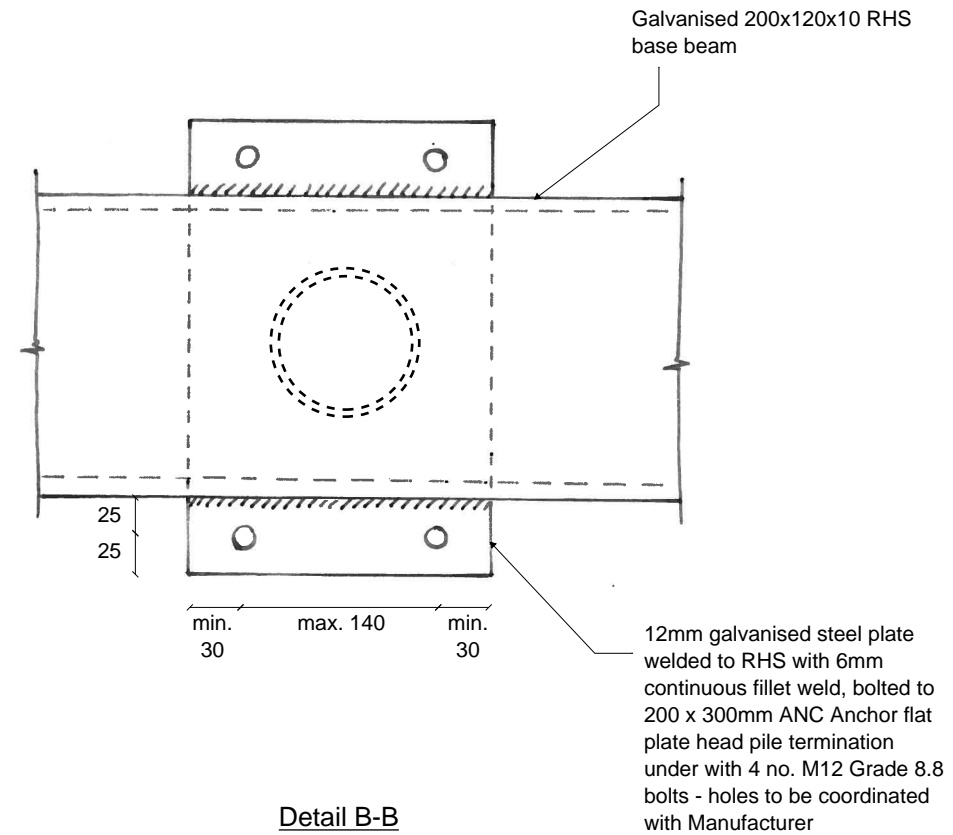
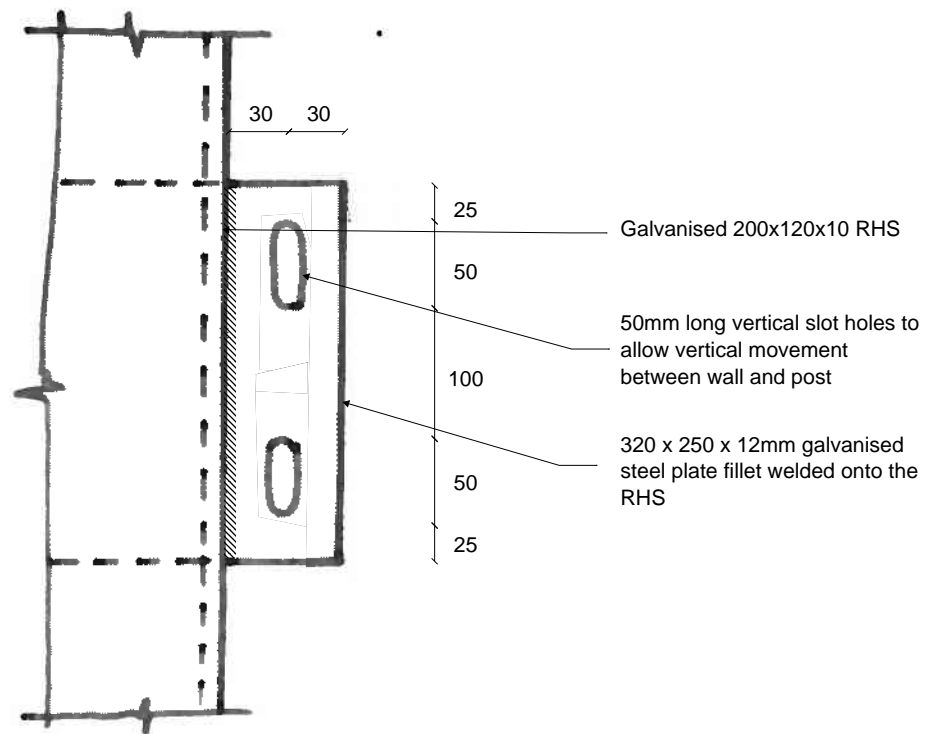


Detail A-A  
Scale 1:5



Detail B-B  
Scale 1:5



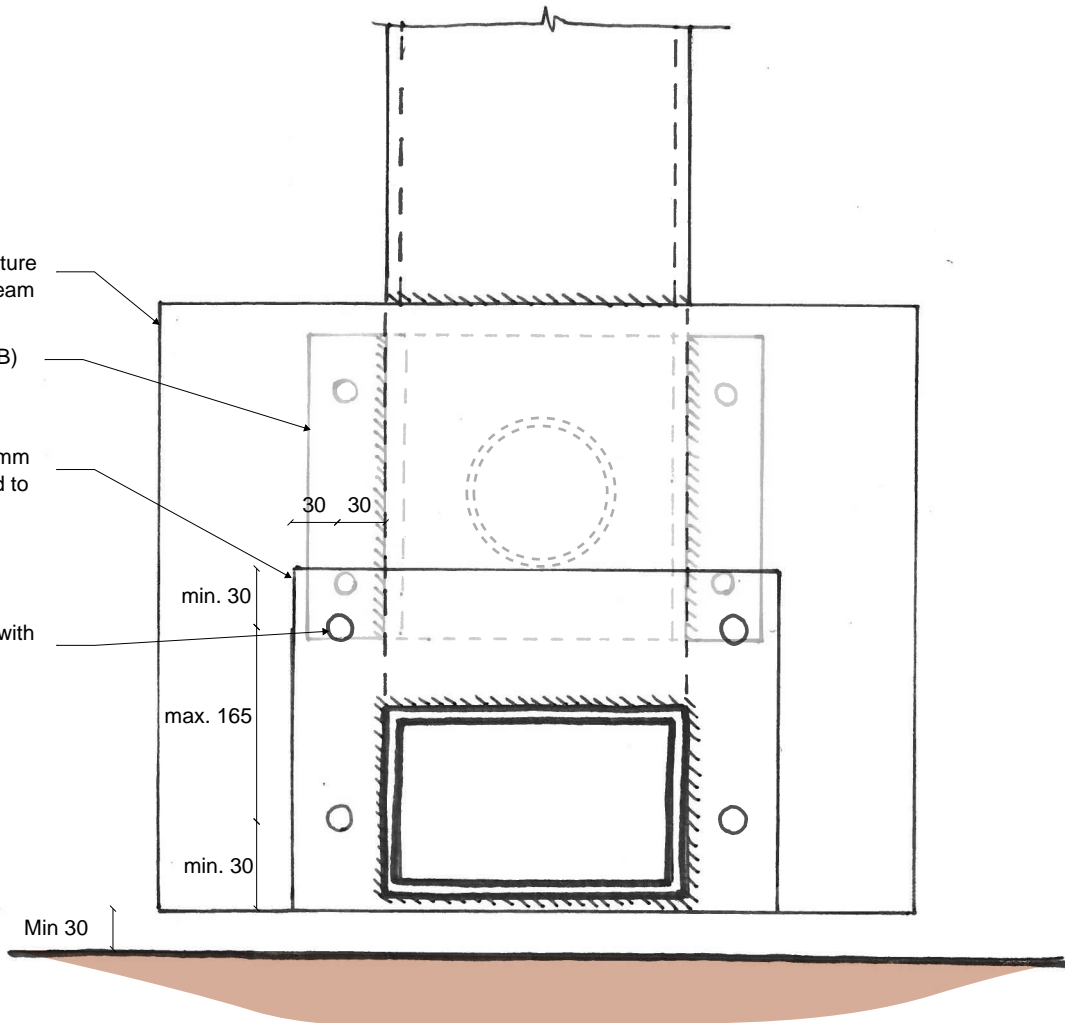
Detail C-C  
Scale 1:5

15mm oversized plate (500x400) to suit potential future brick skin, welded to base beam

Connection to pile (Detail B-B) below

Base of steel post cut to suit angle of wall locally, with 15mm base plate (325x225) welded to base of post

Steel plates bolted together with 4 no. M16 Grade 8.8 bolts



Detail D-D  
Scale 1:5

#### Standard Notes

1. This drawing is to be read in conjunction with all relevant Architect's and Engineer's drawings and the specification.
2. This drawing should not be scaled.
3. All dimensions are to be verified by the contractor on site.
4. All discrepancies should be reported to the C.A. prior to the commencement of the works.

© CIVICENGINEERS

#### Notes and Keys

1. See drawing 893-07-(GA)100 for General Notes.
3. For the existing and proposed elevations, refer to drawing 893-07-(GA)004.

Date	Rev	Description	Drawn	Chkd
04.04.19	C02	Detail D-D added	DP	RW
15.03.19	C01	Construction	DP	RW



MANCHESTER Carver's Warehouse, 77 Dale Street, Manchester, M1 2HG. Tel: 0161 228 6757  
LONDON Beeth Wharf, 33 Mill Street, London SE1 2AX. Tel: 020 7253 2977  
LEEDS Tower Works, Unit 02-01, Globe Road, Leeds, LS11 5QG. Tel: 0113 2025 130  
GLASGOW Graham Chambers, 45 West Nile Street, Glasgow, G1 2PT. Tel: 0141 370 1829  
[www.civicingineers.com](http://www.civicingineers.com)

Project  
Fenton House  
National Trust

Title  
Leaning Boundary Wall  
New Posts  
Proposed Details

Status  
CONSTRUCTION

Scale	Date Created	Drawn	Checked
Scale @ A3	Feb' 19	DP	RW
Project Number	Drawing Number	Revision	
893/07	(DE)005	C02	