

Ceilings Strategy - Colour Key

- Type 1**
Retain and paint existing ceilings, cornices and ceiling mouldings. Restore and make good to missing parts.
- Type 2**
Make good existing ceilings and paint
- Type 3**
New plasterboard ceiling (FR 60min)
- Type 4**
New suspended plasterboard ceiling (FR 60min)
- Type 5**
Insulated plasterboard to provide thermal upgrade.
- Type 6**
Mass barrier acoustic ceiling (FR 60min)
- Class A Acoustic absorption

Ceilings Strategy - Cornices Code

- Existing Cornice and Rose-Original-Type A
- Existing Cornice - Original - Type B
- Existing Cornice - Not Original
- New Cornice - to match existing
- Not original Cornice to be omitted

Ceilings Strategy - Symbols Key

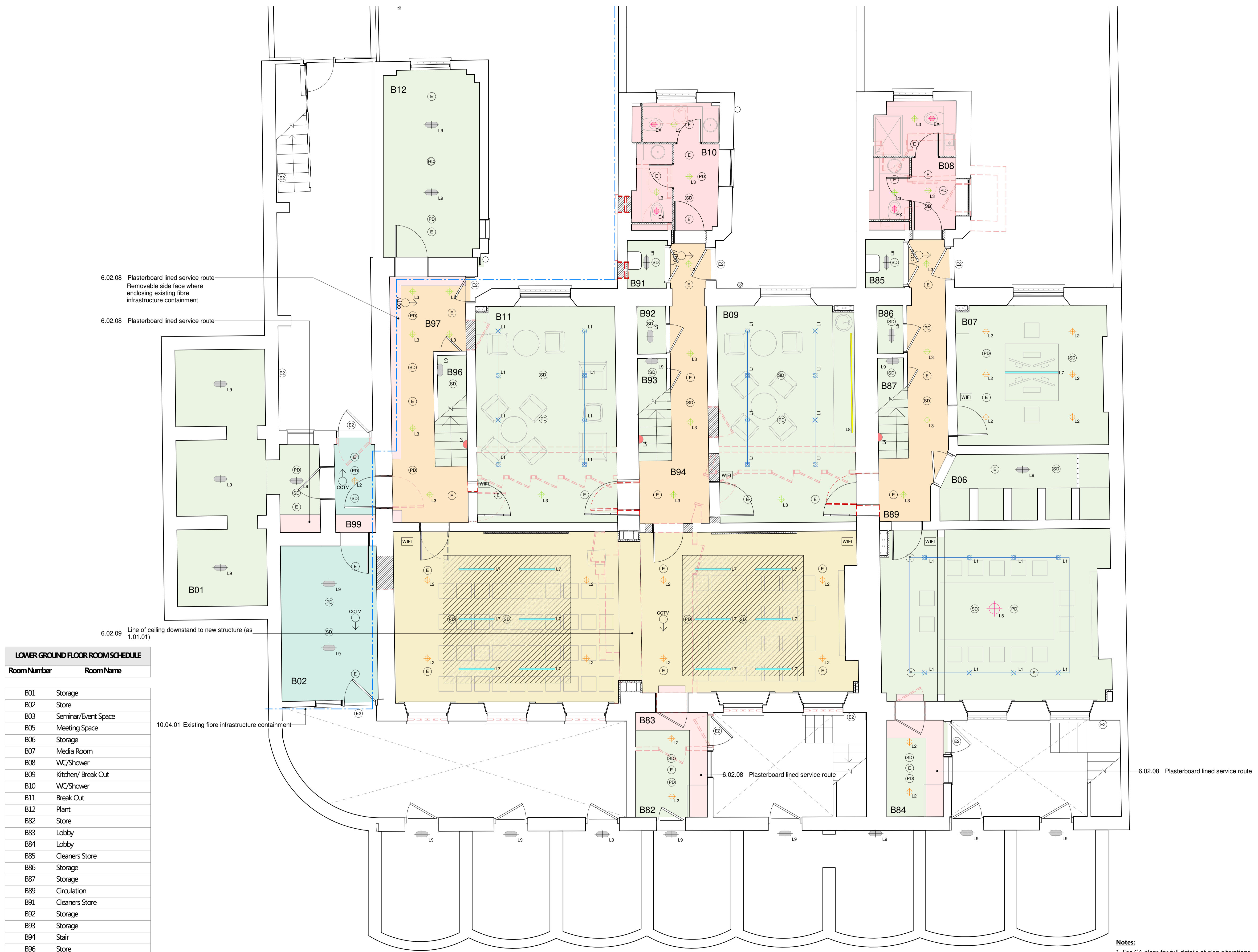
- ✕ L1 Adjustable downlights on track.
 - + L2 Surface mounted LED downlight
 - + L3 Recessed LED downlight (including IP rated fittings to required areas)
 - ▲ L4 Wall mounted light (uplight and downlight)
 - ⊕ L5 Decorative pendant downlight type 1 (with uplight component)
 - ⊕ L6 Decorative pendant downlight type 2
 - L7 Suspended linear light
 - L8 Concealed LED strip
 - L9 Surface mounted light (stores and plant rooms)
 - ⊕ E1 External surface mounted light (uplight and downlight)
 - ⊕ SD Smoke Detector
 - ⊕ PD Presence Detector
 - ⊕ E Emergency Light Type 1 (internal)
 - ⊕ E2 Emergency Light Type 2 (external)
 - ⊕ WIFI WIFI point
 - ⊕ EX WC Extract system
- For detailed MEP layouts refer to Fowler Martin drawings
- Final setting out of all fittings to be confirmed

Nicholas Hare Architects

3 Barnsbury Square London N1 1JL
 telephone +44 (0)20 7619 1670
 fax +44 (0)20 7619 1671
 e-mail info@nicholashare.co.uk

project UCL SEPP Gordon Square
 for UCL
 title RCP Plans-Lower Ground Floor

scale 1:50
 size A1
 drawing number SEPP-NHA-XX-B1-PL-A-35050
 rev. 00



6.02.08 Plasterboard lined service route
 Removable side face where enclosing existing fibre infrastructure containment

6.02.08 Plasterboard lined service route

6.02.09 Line of ceiling downstand to new structure (as 1.01.01)

10.04.01 Existing fibre infrastructure containment

6.02.08 Plasterboard lined service route

6.02.08 Plasterboard lined service route

LOWER GROUND FLOOR ROOM SCHEDULE

Room Number	Room Name
B01	Storage
B02	Store
B03	Seminar/Event Space
B05	Meeting Space
B06	Storage
B07	Media Room
B08	WC/Shower
B09	Kitchen/ Break Out
B10	WC/Shower
B11	Break Out
B12	Plant
B82	Store
B83	Lobby
B84	Lobby
B85	Cleaners Store
B86	Storage
B87	Storage
B89	Circulation
B91	Cleaners Store
B92	Storage
B93	Storage
B94	Stair
B96	Store
B97	Stair
B99	Lobby

Notes:
 1. See GA plans for full details of plan alterations.
 2. Read in conjunction with SEPP-NHA-XX-XX-SH-A-42030 Outline Schedule of Works.