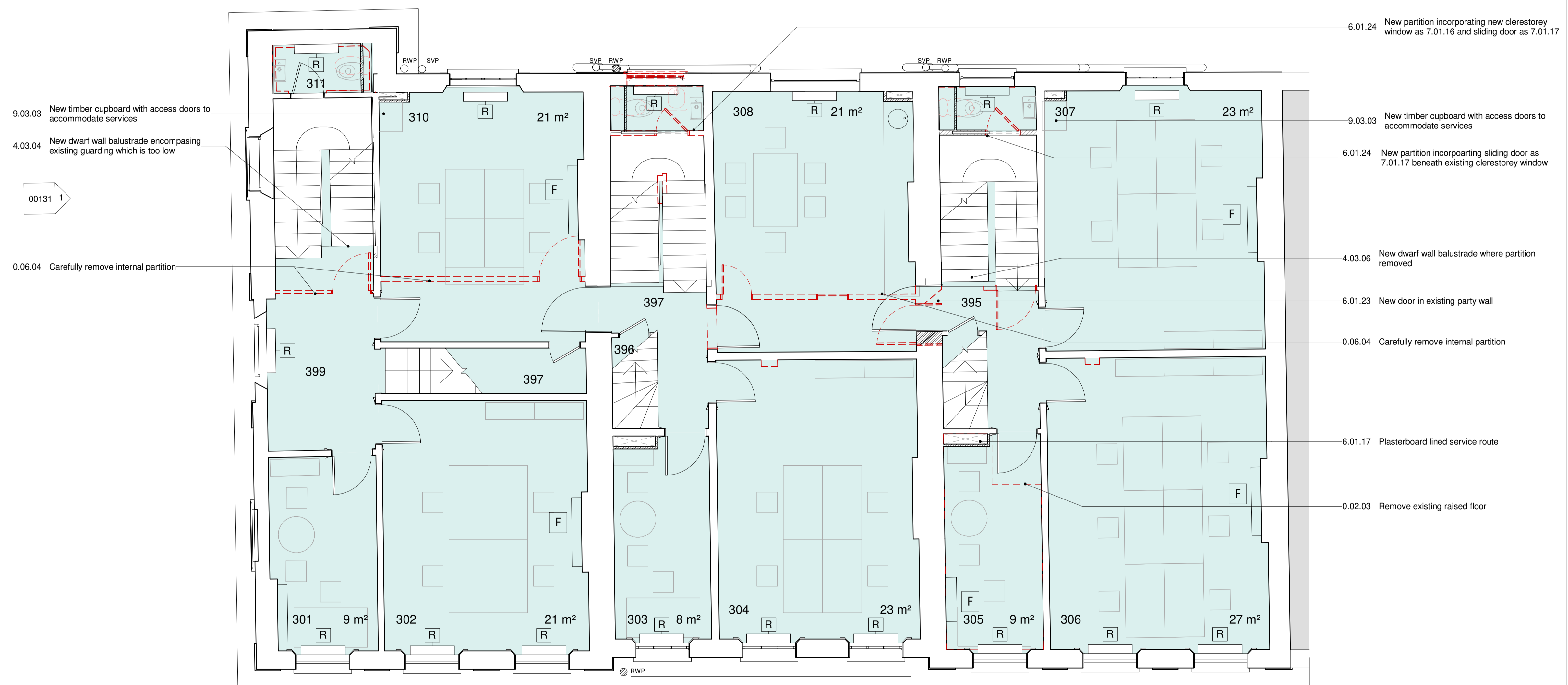


00132
1



- 9.03.03 New timber cupboard with access doors to accommodate services
- 4.03.04 New dwarf wall balustrade encompassing existing guarding which is too low
- 00131 1
- 0.06.04 Carefully remove internal partition

- 6.01.24 New partition incorporating new clerestory window as 7.01.16 and sliding door as 7.01.17
- 9.03.03 New timber cupboard with access doors to accommodate services
- 6.01.24 New partition incorporating sliding door as 7.01.17 beneath existing clerestory window
- 4.03.06 New dwarf wall balustrade where partition removed
- 6.01.23 New door in existing party wall
- 0.06.04 Carefully remove internal partition
- 6.01.17 Plasterboard lined service route
- 0.02.03 Remove existing raised floor

KEY LEGEND

- Demolition Works
- New Construction

Read in conjunction with SEPP-NHA-XX-XX-SH-A-42030 Outline schedule of works for full details

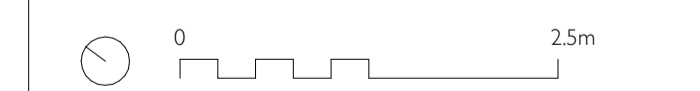
- R Radiator F Fireplace

OCCUPANCY = 31 (28)
21 Academic Workspaces
4 PGR Workspaces
6 Social Spaces (3)

**Fire Occupancy in brackets based on 50% capacity to non-workspace areas*

THIRD FLOOR ROOM SCHEDULE

Room Number	Room Name
301	Academic/PGR workspace
302	Academic/PGR workspace
303	Academic/PGR workspace
304	Academic/PGR workspace
305	Academic/PGR workspace
306	Academic/PGR workspace
307	Academic/PGR workspace
308	Kitchen / Social Space
310	Academic/PGR workspace
395	Stair
396	Storage
397	Storage
397	Stair
398	Stair
399	Stair



Nicholas Hare Architects
3 Bamsbury Square London NI 1JL
telephone +44 (0)20 7619 1670
fax +44 (0)20 7619 1671
e-mail info@nicholashare.co.uk

project UCL SEPP Gordon Square
for UCL
title GA Plan-Proposed-Third Floor

scale	size	drawing number	rev.
1:50	A1	SEPP-NHA-XX-03-PL-A-00034	00

00130
1