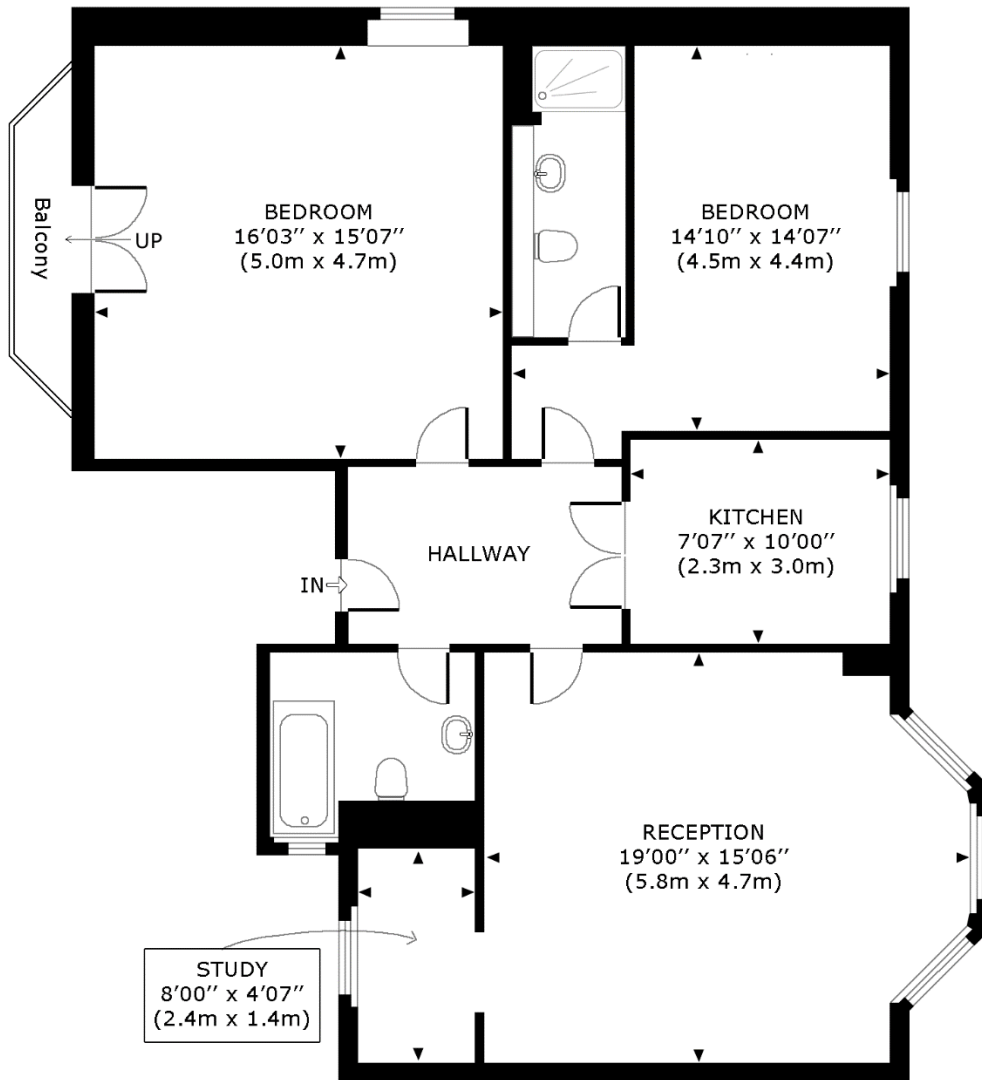


## Existing Floor Plans

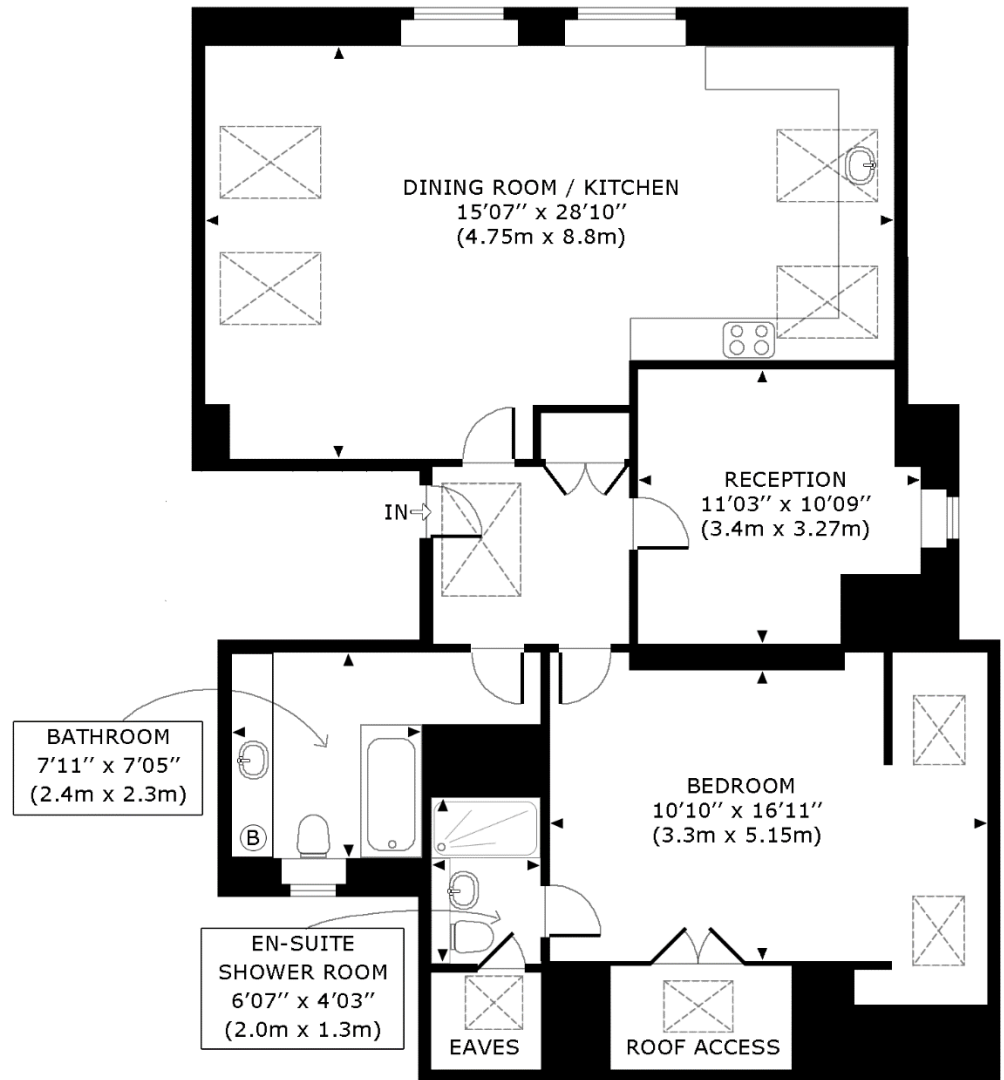
Flat 5, 6 Strathray Gardens, London, NW3 4NY



**SECOND FLOOR (FLAT 5)**  
**936 SQ FT / 87 SQ M**

APPROXIMATE GROSS INTERNAL FLOOR AREA = 936 SQ FT / 87 SQ M

Flat 6, 6 Strathray Gardens, London, NW3 4NY



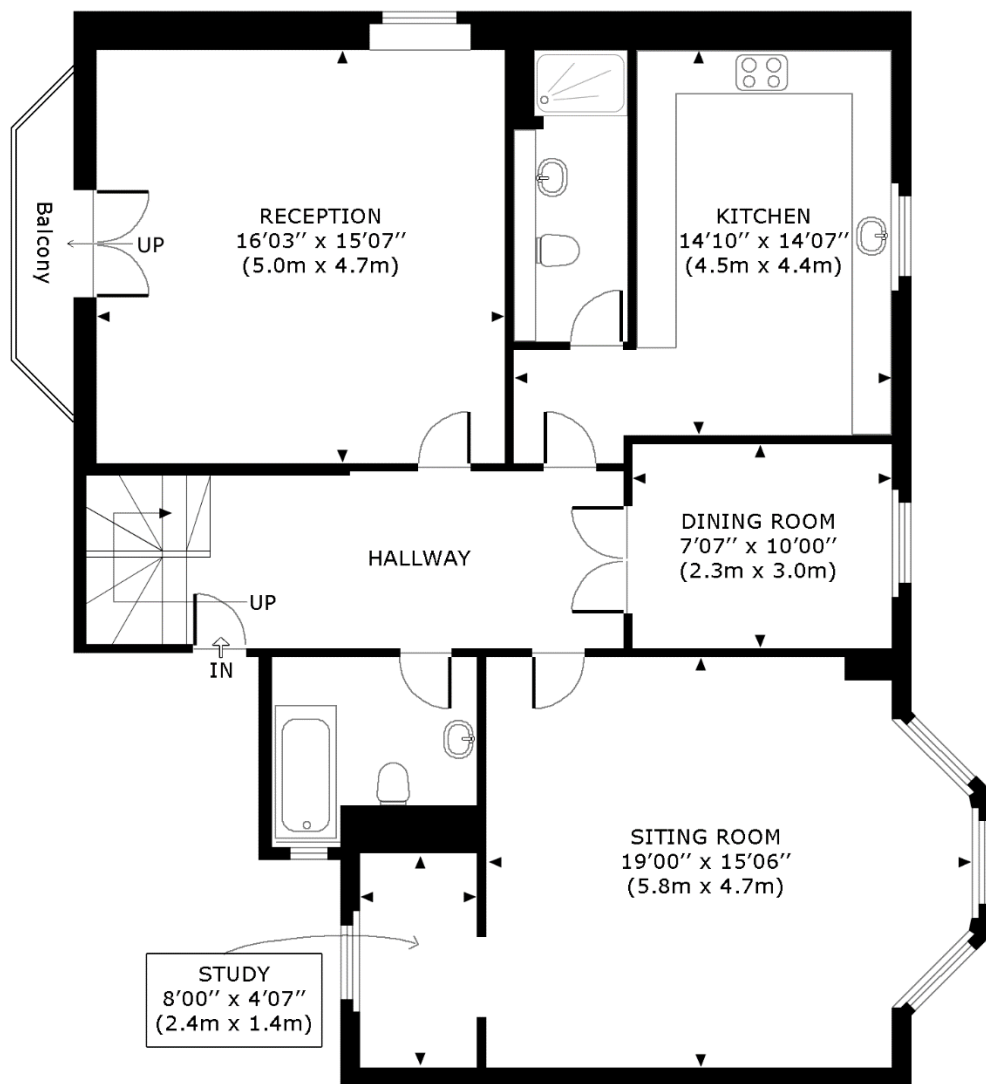
**THIRD FLOOR (FLAT 6)**  
**1006 SQ FT / 93 SQ M**

APPROXIMATE GROSS INTERNAL FLOOR AREA = 1006 SQ FT / 93 SQ M

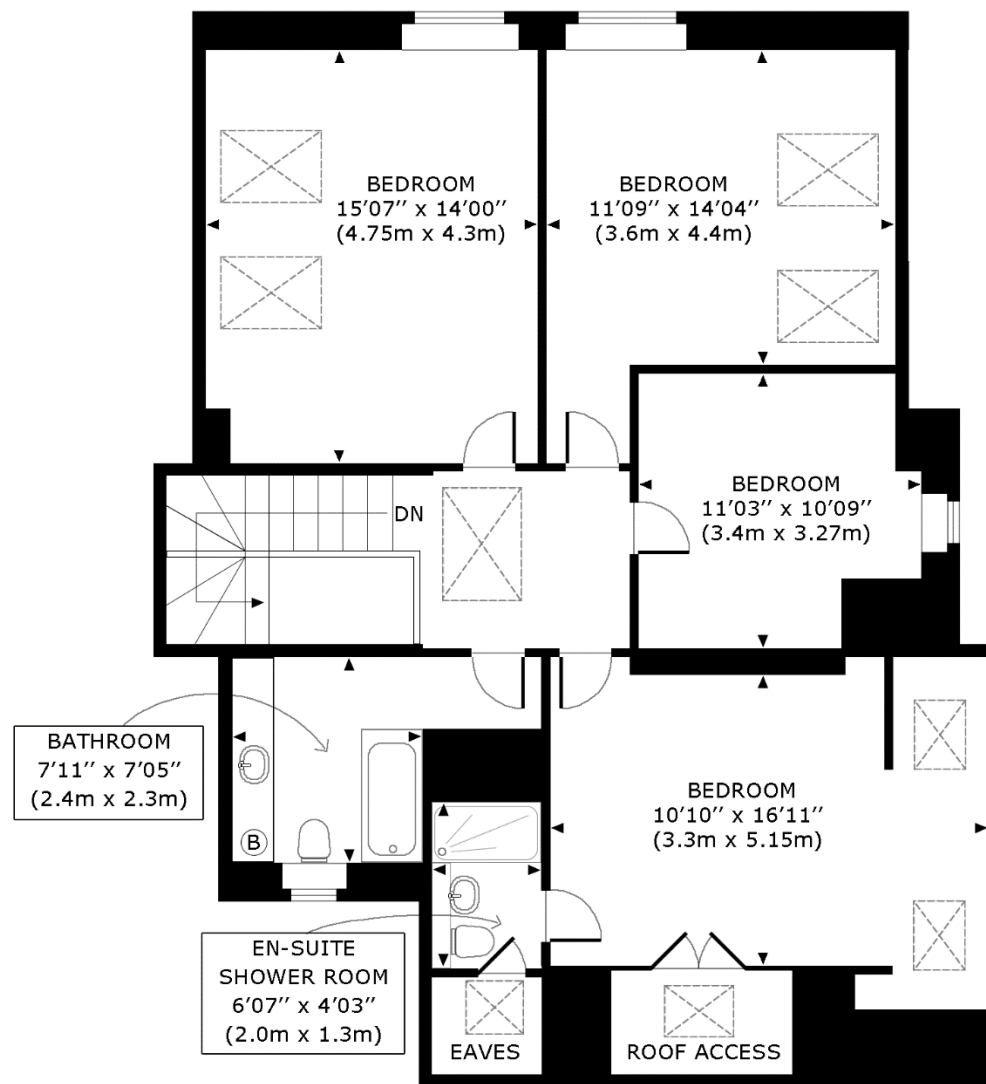
**FOR IDENTIFICATION PURPOSES ONLY - NOT TO SCALE**

## New Floor Plans

Combined Flat at 6 Strathray Gardens, London, NW3 4NY



**SECOND FLOOR (FLAT 5)**  
**986 SQ FT / 92 SQ M**



**THIRD FLOOR (FLAT 6)**  
**1056 SQ FT / 98 SQ M**

APPROXIMATE GROSS INTERNAL FLOOR AREA = 2042 SQ FT / 189 SQ M

**FOR IDENTIFICATION PURPOSES ONLY - NOT TO SCALE**