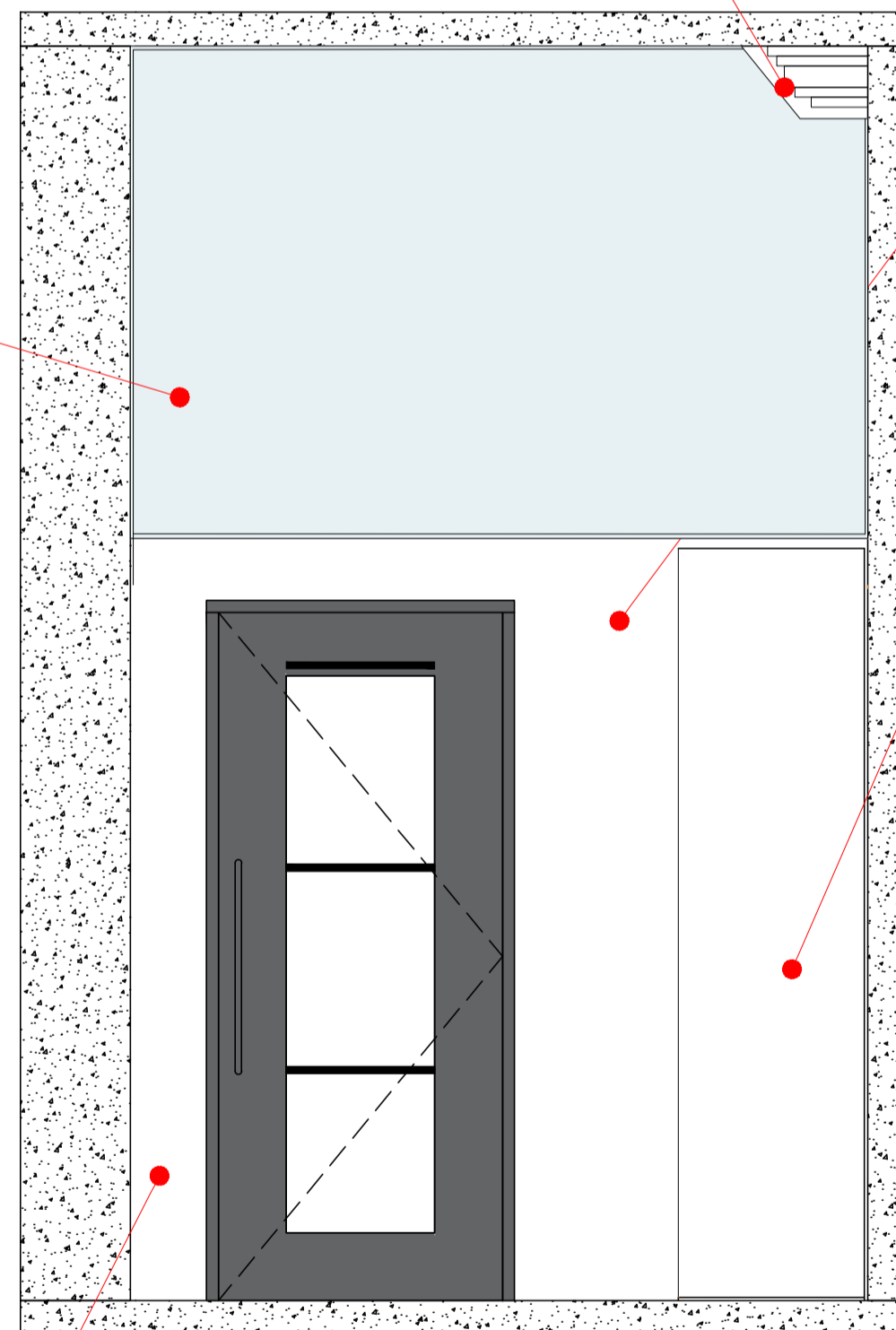


Frameless glass to be cut in straight lines around the cornice so the glass can go all the way up to the top of the ceiling leaving a small gap around the cornice

Glazing at the top of the wall to allow visibility of ceiling details and allow light through

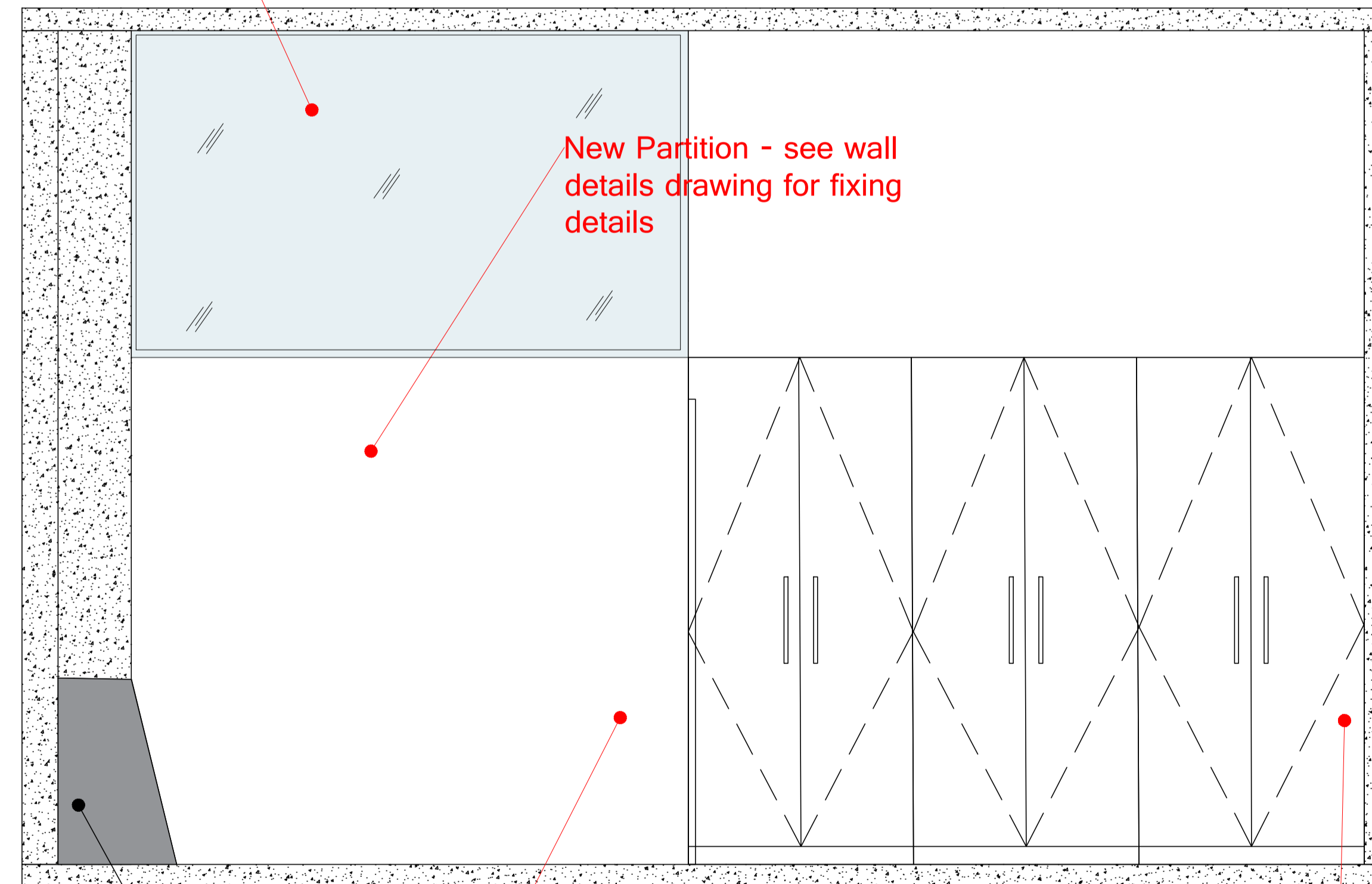
Glazing track around the perimeter of the glazing excluding the cut out around the cornice



New Partition - see wall details drawing for fixing details

Storewall fixed to a floor and ceiling track for stability- no requirement to fix to walls

Height of the new partition determined by the height of the main entrance door so it all matches through.



Existing radiators

Height of the new partition determined by the height of the main entrance door so it all matches through.

Storewall fixed to a floor and ceiling track for stability- no requirement to fix to walls - height to match the new partition height

NOTES

THIRDWAY INTERIORS DO NOT ACCEPT LIABILITY FOR ANY ERRORS AND OMISSIONS ARISING FROM THE PREPARATION OF BASE BUILD DRAWINGS WHICH ARE DERIVED FROM ORIGINAL MATERIAL PROVIDED BY OTHERS.
 ALL DISCREPANCIES ARE TO BE REPORTED TO THIRDWAY INTERIORS.
 GRID LINES ARE FOR REFERENCE PURPOSES ONLY. ALL DIMENSIONS TO BE VERIFIED BY CONTRACTOR ON SITE PRIOR TO ANY WORKS COMMENCING. DO NOT SCALE FROM THIS DRAWING.
 THIS DOCUMENT IS THE PROPERTY OF THIRDWAY INTERIORS.
 COPYRIGHT IS RESERVED BY THEM, AND THE DRAWING IS ISSUED ON THE CONDITION THAT IT IS NOT COPIED, REPRODUCED OR RETAINED BY, NOR DISCLOSED TO ANY UNAUTHORISED PERSON, EITHER WHOLLY OR IN PART, WITHOUT THE CONSENT IN WRITING FROM THIRDWAY INTERIORS.

© THIRDWAY INTERIORS

STATUS

- Concept / Information
- Building Control
- Approval / Comment
- Contract
- Construction
- As-Built

REVISION DETAIL

REV	DETAIL	BY	DATE
-	-	-	DD/MM
-	-	-	-
-	-	-	-
-	-	-	-
-	-	-	-
-	-	-	-
-	-	-	-
-	-	-	-

CLIENT

COINCRAFT

PROJECT ADDRESS

**26 PARKER ST
LONDON
WC2B 5PH**

DRAWING TITLE

**PROPOSED GF LOBBY
ELEVATIONS**

DWG NO: **18834-GF-E01 - B**

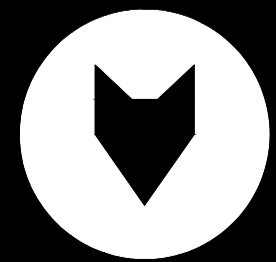
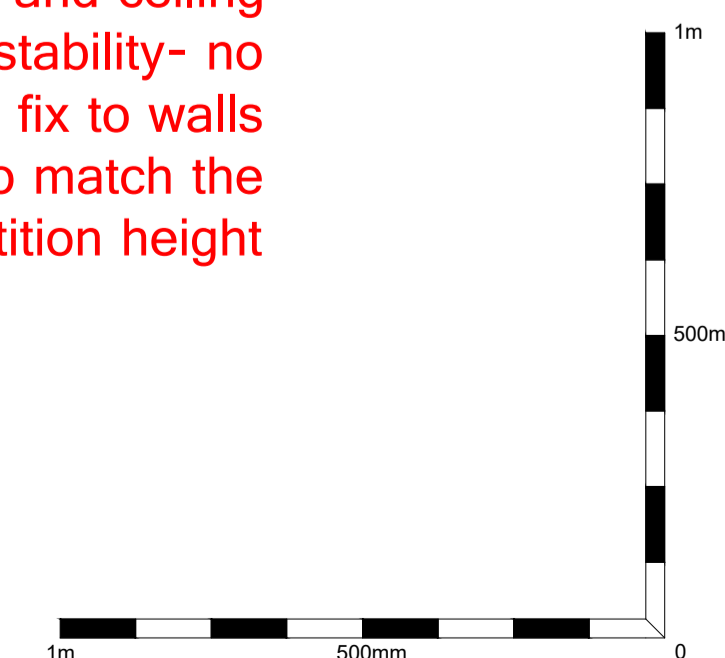
REVISION: **A**

SCALE @A1: **1:20** @ A3: **1:40**

DATE: **07.06.19**

DRAWN BY: **ECW**

CHECKED BY: **ECW**



THIRDWAY