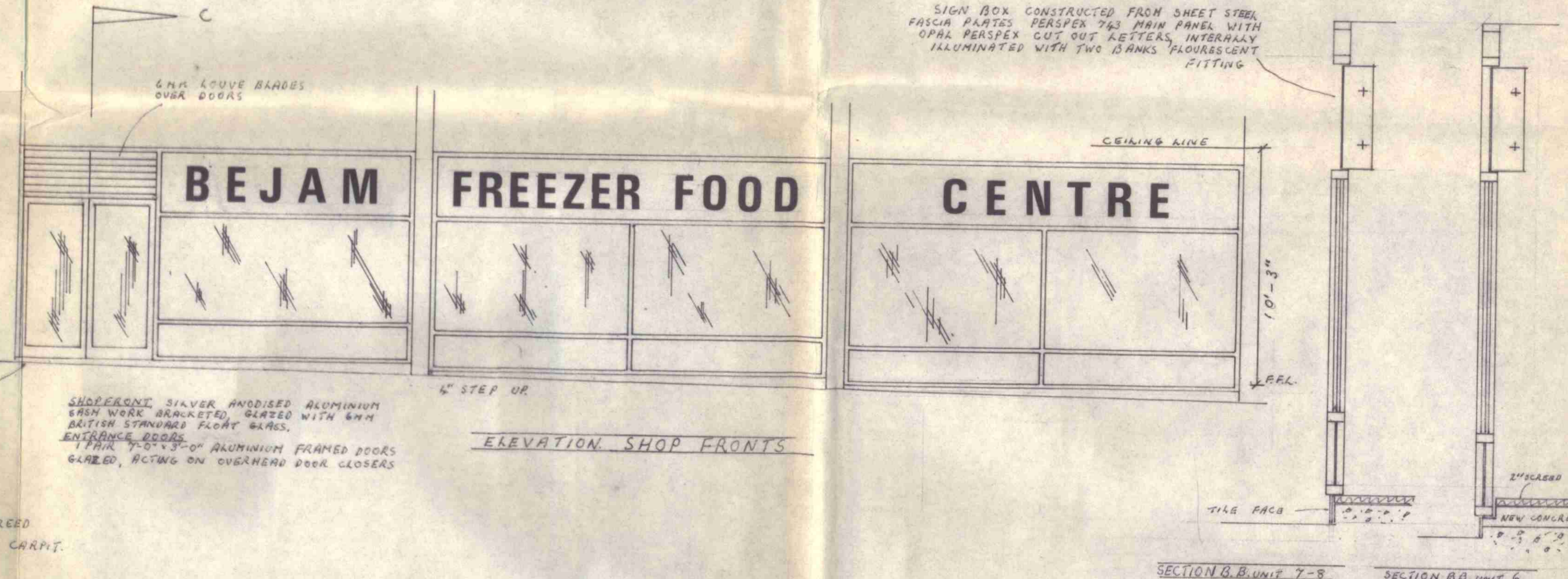
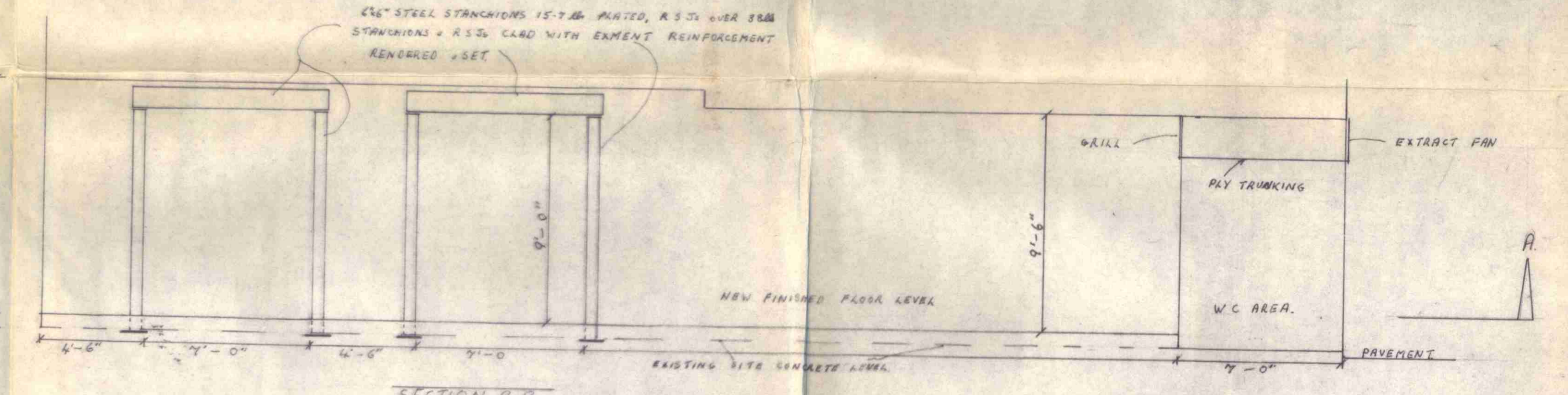


PLAN

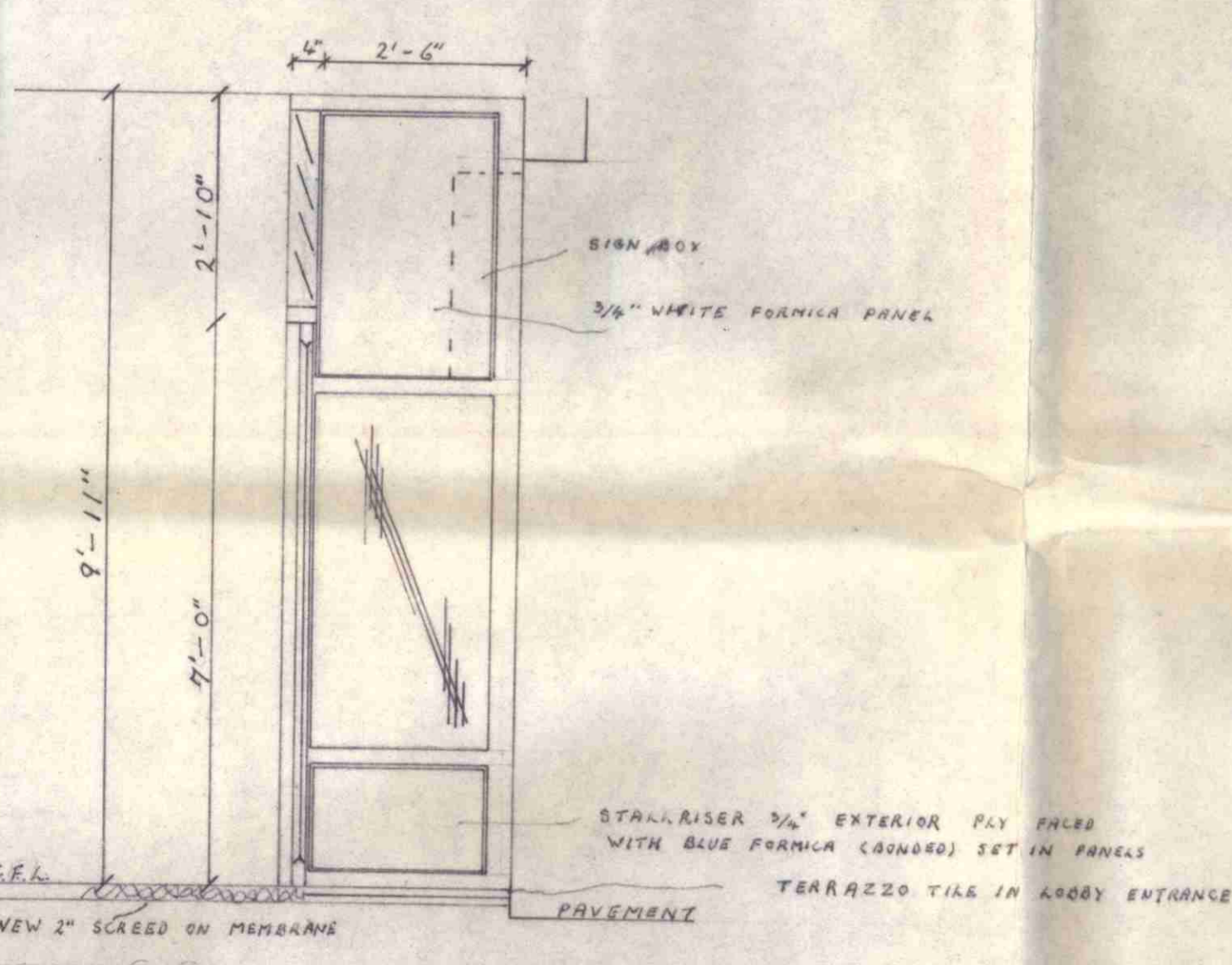


ELEVATION SHOP FRONTS

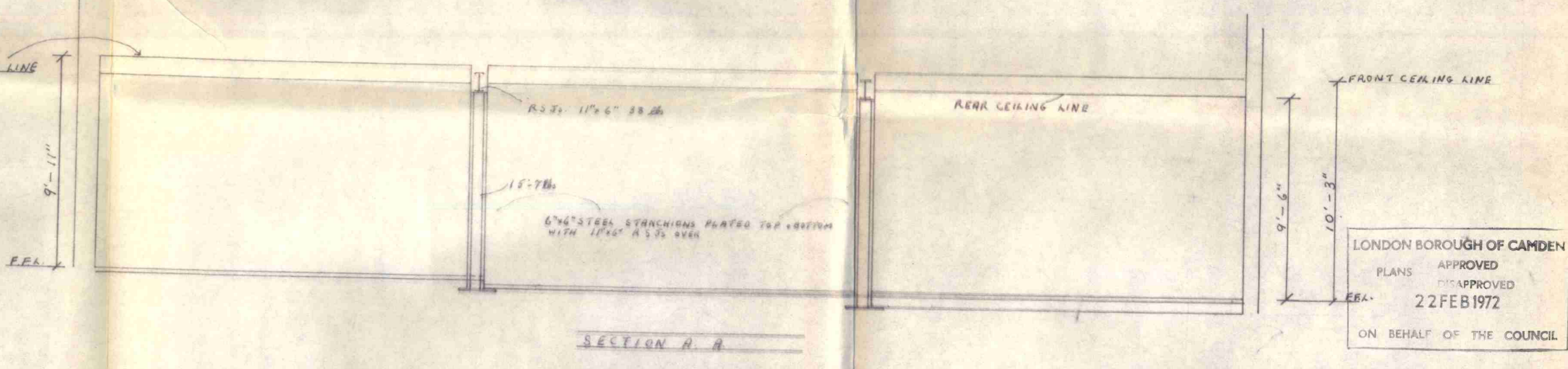
WALLS PLASTER + SET  
 FLOORS CONCRETE 2" SCREED  
 COVERED WITH FLOATEX CARPET  
 DECORATIONS, CEILING & WALLS  
 TWO COAT EMULSION,  
 CEILING WHITE  
 WALLS SUMMER BLUE  
 ELECTRICAL 3 PHASE SUPPLY  
 100 AMPS PER PHASE



SECTION B.B



SECTION C.C



SECTION A.A

LONDON BOROUGH OF CAMDEN  
 PLANS APPROVED  
 22 FEB 1972  
 ON BEHALF OF THE COUNCIL

SCALE 1/4" = 1'-0"

P/47/7/A/1278

PROPOSED SHOPFRONTS + INTERIOR ALTERATIONS FOR BEJAM BULK BUYING LTD.  
 AT UNITS 6-7-8 WINCHESTER RD, DEVELOPMENT SWISS COTTAGE.

REVISION	DRAWN	DATE
	44P	20-1-72
	No 81082	

**CITYSCAPE LTD.**  
 38 - 38 BEACONSFIELD ROAD  
 ST. GEORGE, BRISTOL BS5 8ER  
 Telephone: 558404