

6 Lyndhurst Gardens



Existing Front Elevation

DESIGN AND ACCESS STATEMENT

LBMVarchitects

27 Elizabeth Mews, NW3 4UH
T +44(0) 207 483 3880
M +44(0)78 37344073
info@lbmvarchitects.com
www.lbmvarchitects.com

REF 0071
DATE 04/06/2019
CLIENT 06 Lyndhurst Gardens Ltd
PROJECT AT 6 Lyndhurst Gardens, NW3 5NR
PROJECT Rear and Side extension, Basement excavation, Internal Alterations

Proposed Development in Brief

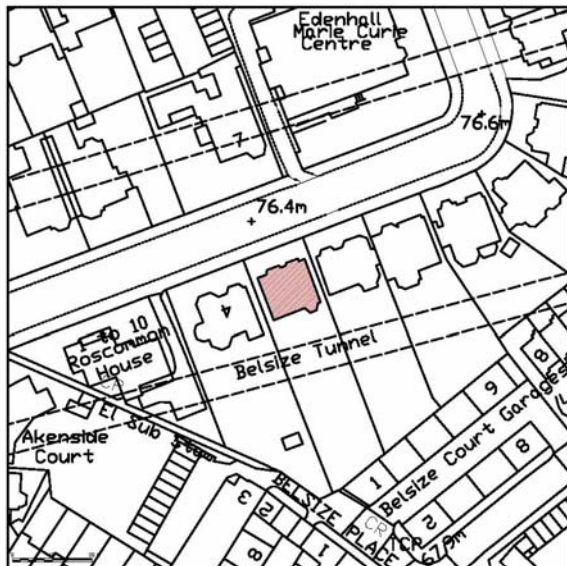
The enclosed full planning application relates to the following works

- Proposed bespoke store bins
- New stone flooring for front garden area

Application Site

6 Lyndhurst Gardens is an apartment block of late '800, originally designed as single dwelling , currently divided in flats.

Location Map

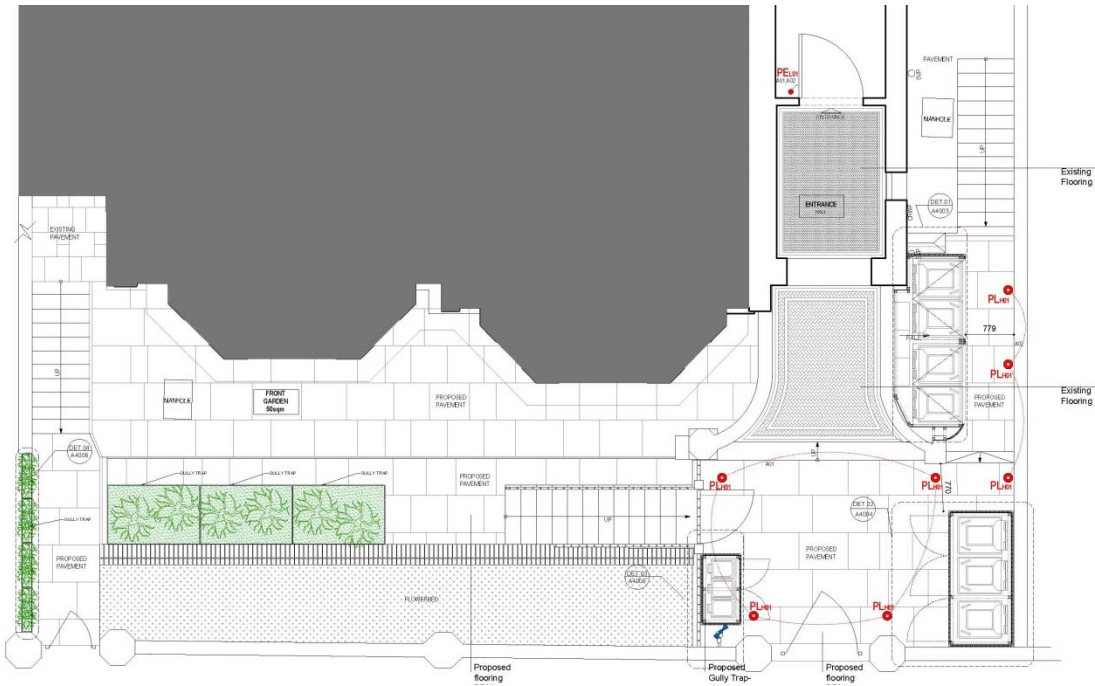


Design

Bin Stores

The proposed new bin stores are made of timber painted black to blend armoniously with the black railings of the gates and balustrades.

They will also incorporate a flower bed to minimize the visual impact



Stone floor

A new stone floor with Grey yorkstone , flamed finished with random length , a sample stone will be provided for approval

**Access Statement**

The enclosed proposal does not adversely affect current conditions of parking and access to the property.

