

CROGSLAND ROAD

Ground Floor Plan
 1:100

DRAWING REFERENCES:

AA4796C-4000 series
 AA4796C-4001 - Ground Floor Key Plan
 AA4796C-4002 - First Floor Key Plan
 AA4796C-4003 - Second Floor Key Plan
 AA4796C-4004 - Third Floor Key Plan
 AA4796C-4005 - Fourth Key Plan
 AA4796C-4006 - Fifth Key Plan
 AA4796C-4007 - Roof Key Plan
 AA4796C-4010 - 4012 - Ground Floor Plans
 AA4796C-4014 - 4016 - First Floor Plans
 AA4796C-4018 - 4020 - Second Floor Plans
 AA4796C-4022 - 4024 - Third Floor Plans
 AA4796C-4026 - 4028 - Fourth Floor Plans
 AA4796C-4030 - 4032 - Fifth Floor Plans
 AA4796C-4037 - 4039 - Elevations
 AA4796C-4040 - 4042 - Building Sections
 AA4796C-4045 - Flat Type A
 AA4796C-4046 - Flat Type B
 AA4796C-4047 - Flat Type C
 AA4796C-4048 - Flat Type D
 AA4796C-4049 - Flat Type E
 AA4796C-4050 - Axonometrics of Building

AA4796C-5000 series
 AA4796C-5001 - Fire Strategy Ground Floor
 AA4796C-5002 - Fire Strategy First & Second Floor
 AA4796C-5003 - Fire Strategy Third & Fourth Floor
 AA4796C-5004 - Fire Strategy Fifth & Roof Plan
 AA4796C-5005 - Access & Security Strategy
 AA4796C-5007 - Reflective Ceiling Plan Ground & First Floor
 AA4796C-5008 - Reflective Ceiling Plan Second & Third Floor
 AA4796C-5009 - Reflective Ceiling Plan Fourth & Fifth Floor

AA4796C-6000 series - Details
 AA4796C-7001 - External Opening Type Elevations
 AA4796C-7003 - External Opening, Rooflight and Curtain Wall Schedules

AA4796C-8000 series
 AA4796C-8001 - 8002 - Stairs and Lifts
 AA4796C-8007 - 8010 - Internal Doors and Screens

Rev	Date	Description	Drawn	Chk
G	16-01-19	Updated to contractors comments. General update	PJ	JB
F	16-12-18	Revisions as clouded, door no added, cycle stands adjusted for planning	PJ	JB
E	03-12-18	Drawing updated to clients comments	MA	JB
D	27-11-18	Main kitchen layout revised	MA	PJ
C	08-11-18	Drawing updated as clouded	PJ	MA
B	25-10-18	Main kitchen layout revised to re-gen kitchen and damage updated accordingly	PJ	JB
A	17-10-18	Updated to recent comments	MA	PJ
	17-09-18	First issue		

Charlie Ratchford, Extra Care
 Ground Floor Plan

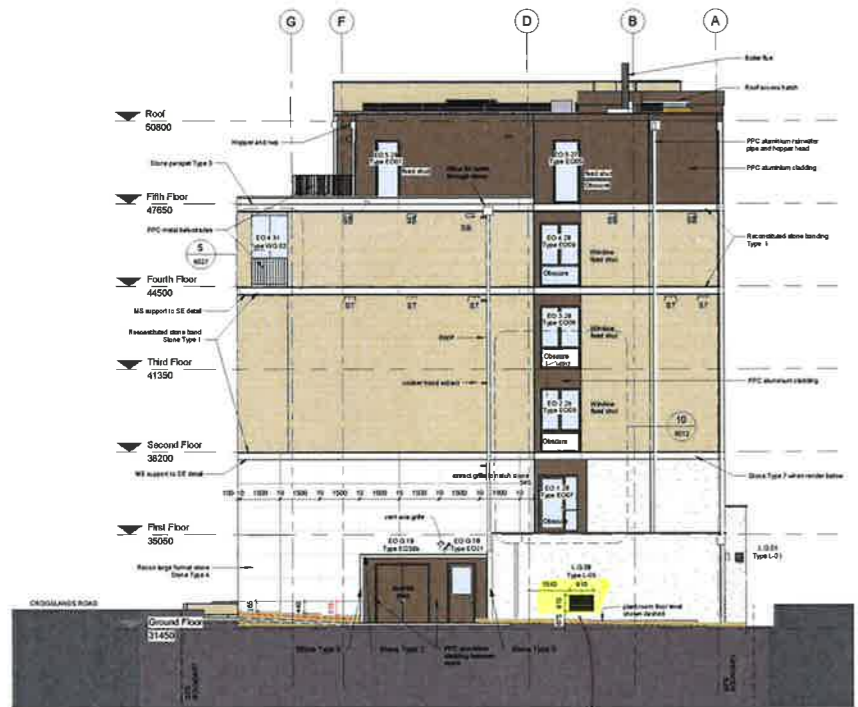
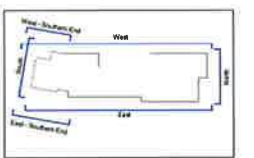
AA4796C-4001 **REV G**
 FOR COMMENTS

Drawn MA Checked PJ Date Sept 18 Scale @ A1 As indicated

REVISIONS

1. Rev. 01: Structural Changes
 2. Rev. 02: Structural Changes
 3. Rev. 03: Structural Changes
 4. Rev. 04: Structural Changes
 5. Rev. 05: Structural Changes
 6. Rev. 06: Structural Changes
 7. Rev. 07: Structural Changes
 8. Rev. 08: Structural Changes
 9. Rev. 09: Structural Changes
 10. Rev. 10: Structural Changes
 11. Rev. 11: Structural Changes
 12. Rev. 12: Structural Changes
 13. Rev. 13: Structural Changes
 14. Rev. 14: Structural Changes
 15. Rev. 15: Structural Changes
 16. Rev. 16: Structural Changes
 17. Rev. 17: Structural Changes
 18. Rev. 18: Structural Changes
 19. Rev. 19: Structural Changes
 20. Rev. 20: Structural Changes

The contractor is responsible for checking dimensions, levels and references. Any discrepancy is to be notified with the Architect before proceeding with the work. Where no conflict is covered by drawings, the Architect retains the right to issue a variation order. All current drawings and specifications for the project must be read in conjunction with the Designer's Hazard and Environmental Assessment Report. All intellectual property rights reserved.



1 | North Main Elevation
1:100

LOWES



2 | East Elevation taken through Wintergarden
1:100

DRAWING REFERENCES:

- AA4796C-4037 - Ground Floor Plan
- AA4796C-4037 - First Floor Plan
- AA4796C-4037 - Second Floor Plan
- AA4796C-4037 - Third Floor Plan
- AA4796C-4037 - Fourth Floor Plan
- AA4796C-4037 - Roof Plan
- AA4796C-4037 - Section 1-1
- AA4796C-4037 - Section 2-2
- AA4796C-4037 - Section 3-3
- AA4796C-4037 - Section 4-4
- AA4796C-4037 - Section 5-5
- AA4796C-4037 - Section 6-6
- AA4796C-4037 - Section 7-7
- AA4796C-4037 - Section 8-8
- AA4796C-4037 - Section 9-9
- AA4796C-4037 - Section 10-10
- AA4796C-4037 - Section 11-11
- AA4796C-4037 - Section 12-12
- AA4796C-4037 - Section 13-13
- AA4796C-4037 - Section 14-14
- AA4796C-4037 - Section 15-15
- AA4796C-4037 - Section 16-16
- AA4796C-4037 - Section 17-17
- AA4796C-4037 - Section 18-18
- AA4796C-4037 - Section 19-19
- AA4796C-4037 - Section 20-20

Horizontal movement joints located
 - second floor
 - fourth floor
 - tall brick parapet south elevation
 - stone parapet
 Refer to SE drawing for full detail



3 | East Main Elevation
1:100

Rev	Date	Description	Drawn	Checked
1	24-09-18	Issue for construction	AS	PJ
2	24-09-18	Issue for construction	AS	PJ
3	24-09-18	Issue for construction	AS	PJ
4	24-09-18	Issue for construction	AS	PJ
5	24-09-18	Issue for construction	AS	PJ
6	24-09-18	Issue for construction	AS	PJ
7	24-09-18	Issue for construction	AS	PJ
8	24-09-18	Issue for construction	AS	PJ
9	24-09-18	Issue for construction	AS	PJ
10	24-09-18	Issue for construction	AS	PJ
11	24-09-18	Issue for construction	AS	PJ
12	24-09-18	Issue for construction	AS	PJ
13	24-09-18	Issue for construction	AS	PJ
14	24-09-18	Issue for construction	AS	PJ
15	24-09-18	Issue for construction	AS	PJ
16	24-09-18	Issue for construction	AS	PJ
17	24-09-18	Issue for construction	AS	PJ
18	24-09-18	Issue for construction	AS	PJ
19	24-09-18	Issue for construction	AS	PJ
20	24-09-18	Issue for construction	AS	PJ

Charlie Ratchford, Extra Care Elevations Sheet 1

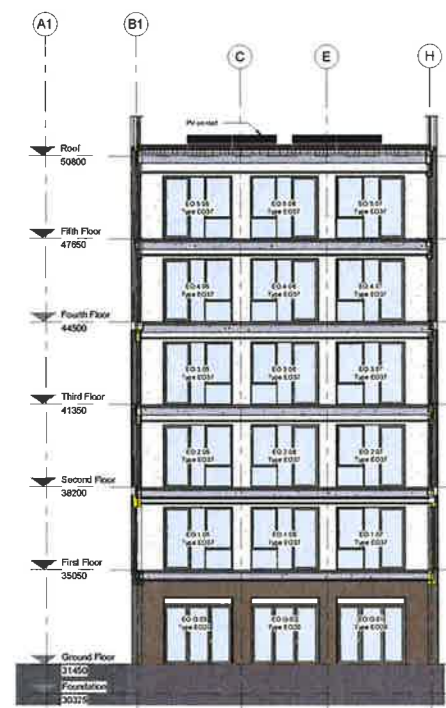
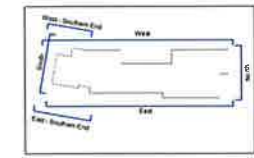
AA4796C-4037 REV 1
 Construction
 Drawn: MA, Checked: PJ, Date: Sept 18, Scale: @ A4, Author: edward

PRP
 020 3339 3600

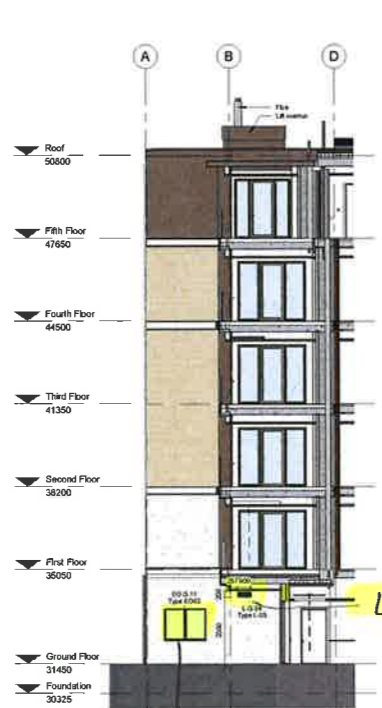
REVISIONS

1 No. 01 - Revised Elevation
 2 No. 02 - Revised Elevation
 3 No. 03 - Revised Elevation
 4 No. 04 - Revised Elevation
 5 No. 05 - Revised Elevation
 6 No. 06 - Revised Elevation
 7 No. 07 - Revised Elevation
 8 No. 08 - Revised Elevation
 9 No. 09 - Revised Elevation
 10 No. 10 - Revised Elevation
 11 No. 11 - Revised Elevation

The contractor is responsible for checking dimensions, tolerances and references. Any discrepancy is to be notified with the Architect before proceeding with the work. Where an error is identified it is to be corrected at the contractor's expense. The contractor shall be responsible for obtaining all necessary permits and approvals. The contractor shall be responsible for obtaining all necessary permits and approvals. The contractor shall be responsible for obtaining all necessary permits and approvals.



1 | South Elevation taken through Wintergarden
1:100



6 | South Elevation - rear side through middle
1:100

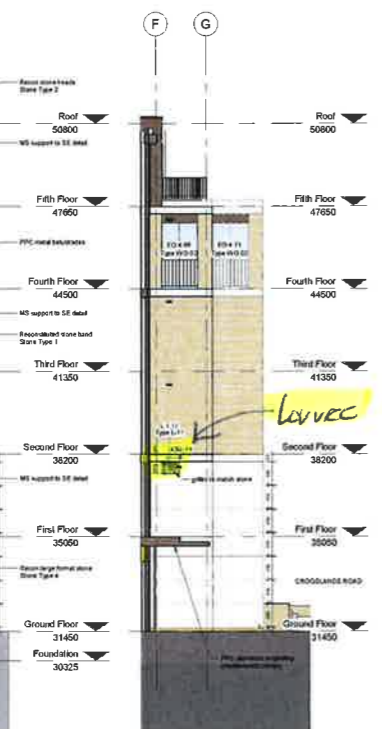
NEW WINDOW



2 | Internal West Elevation
1:100



3 | South Main Elevation
1:100



4 | South Elevation at Stagger
1:100



5 | West Main Elevation
1:100

NEW WINDOW

LOWEE

LOWEE

Horizontal movement joints located
 - second floor
 - fourth floor
 - tall brick parapet south elevation
 - stone parapet
 Refer to SE drawing for full detail

WALKWAY GLAZINGS (GUARDINGS) WAS 1800 HIGH.
 NOW ITS 1100 HIGH. BUILDINGS CONTROL REQUIREMENT
 TO CLEAR SMOKE IN A FIRE SITUATION.

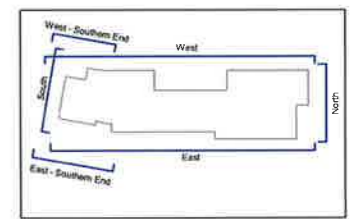
DRAWING REFERENCES:

- AA4796C-001 - General Notes
- AA4796C-002 - Structural Frame Key Plan
- AA4796C-003 - Second Floor Key Plan
- AA4796C-004 - Third Floor Key Plan
- AA4796C-005 - Fourth Floor Key Plan
- AA4796C-006 - Fifth Floor Key Plan
- AA4796C-007 - Ground Floor Key Plan
- AA4796C-008 - Sectional Elevation
- AA4796C-009 - Sectional Elevation
- AA4796C-010 - Sectional Elevation
- AA4796C-011 - Sectional Elevation
- AA4796C-012 - Sectional Elevation
- AA4796C-013 - Sectional Elevation
- AA4796C-014 - Sectional Elevation
- AA4796C-015 - Sectional Elevation
- AA4796C-016 - Sectional Elevation
- AA4796C-017 - Sectional Elevation
- AA4796C-018 - Sectional Elevation
- AA4796C-019 - Sectional Elevation
- AA4796C-020 - Sectional Elevation
- AA4796C-021 - Sectional Elevation
- AA4796C-022 - Sectional Elevation
- AA4796C-023 - Sectional Elevation
- AA4796C-024 - Sectional Elevation
- AA4796C-025 - Sectional Elevation
- AA4796C-026 - Sectional Elevation
- AA4796C-027 - Sectional Elevation
- AA4796C-028 - Sectional Elevation
- AA4796C-029 - Sectional Elevation
- AA4796C-030 - Sectional Elevation
- AA4796C-031 - Sectional Elevation
- AA4796C-032 - Sectional Elevation
- AA4796C-033 - Sectional Elevation
- AA4796C-034 - Sectional Elevation
- AA4796C-035 - Sectional Elevation
- AA4796C-036 - Sectional Elevation
- AA4796C-037 - Sectional Elevation
- AA4796C-038 - Sectional Elevation
- AA4796C-039 - Sectional Elevation
- AA4796C-040 - Sectional Elevation
- AA4796C-041 - Sectional Elevation
- AA4796C-042 - Sectional Elevation
- AA4796C-043 - Sectional Elevation
- AA4796C-044 - Sectional Elevation
- AA4796C-045 - Sectional Elevation
- AA4796C-046 - Sectional Elevation
- AA4796C-047 - Sectional Elevation
- AA4796C-048 - Sectional Elevation
- AA4796C-049 - Sectional Elevation
- AA4796C-050 - Sectional Elevation
- AA4796C-051 - Sectional Elevation
- AA4796C-052 - Sectional Elevation
- AA4796C-053 - Sectional Elevation
- AA4796C-054 - Sectional Elevation
- AA4796C-055 - Sectional Elevation
- AA4796C-056 - Sectional Elevation
- AA4796C-057 - Sectional Elevation
- AA4796C-058 - Sectional Elevation
- AA4796C-059 - Sectional Elevation
- AA4796C-060 - Sectional Elevation
- AA4796C-061 - Sectional Elevation
- AA4796C-062 - Sectional Elevation
- AA4796C-063 - Sectional Elevation
- AA4796C-064 - Sectional Elevation
- AA4796C-065 - Sectional Elevation
- AA4796C-066 - Sectional Elevation
- AA4796C-067 - Sectional Elevation
- AA4796C-068 - Sectional Elevation
- AA4796C-069 - Sectional Elevation
- AA4796C-070 - Sectional Elevation
- AA4796C-071 - Sectional Elevation
- AA4796C-072 - Sectional Elevation
- AA4796C-073 - Sectional Elevation
- AA4796C-074 - Sectional Elevation
- AA4796C-075 - Sectional Elevation
- AA4796C-076 - Sectional Elevation
- AA4796C-077 - Sectional Elevation
- AA4796C-078 - Sectional Elevation
- AA4796C-079 - Sectional Elevation
- AA4796C-080 - Sectional Elevation
- AA4796C-081 - Sectional Elevation
- AA4796C-082 - Sectional Elevation
- AA4796C-083 - Sectional Elevation
- AA4796C-084 - Sectional Elevation
- AA4796C-085 - Sectional Elevation
- AA4796C-086 - Sectional Elevation
- AA4796C-087 - Sectional Elevation
- AA4796C-088 - Sectional Elevation
- AA4796C-089 - Sectional Elevation
- AA4796C-090 - Sectional Elevation
- AA4796C-091 - Sectional Elevation
- AA4796C-092 - Sectional Elevation
- AA4796C-093 - Sectional Elevation
- AA4796C-094 - Sectional Elevation
- AA4796C-095 - Sectional Elevation
- AA4796C-096 - Sectional Elevation
- AA4796C-097 - Sectional Elevation
- AA4796C-098 - Sectional Elevation
- AA4796C-099 - Sectional Elevation
- AA4796C-100 - Sectional Elevation

Charlie Ratchford, Extra Care
 Elevations Sheet 2
 Construction
 AA4796C-4038 REV J
 Construction
 Drawn: MA Checked: PJ Date: 5 Sep 15 Scale: A0 As required

PRP
 020 8330 3000

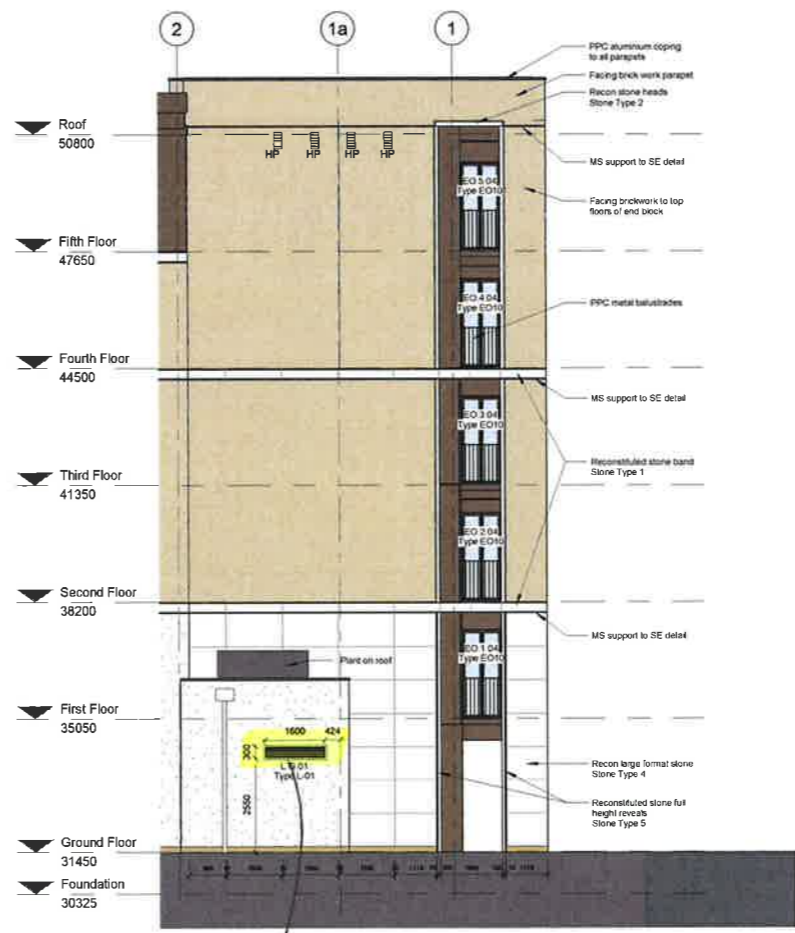
Lowves added to metal cladding system



Key Plan Elevation
1 : 1000



East Elevation (Southern End)
1 : 100



West Elevation (Southern End)
1 : 100

LOWVES

Rev	Date	Description	PU	JB	DM	CKD
C	24-05-18	Lowves updated, notes added	KS	PU		
B	24-04-19	Non material Amendment for Planning	PU	JB		
A	15-04-19	Roof screens removed and updated to contractors comments. Revisions to stone - dims. updated to meet contractor's drawing. PVs indicated	KS	PU		
	18-01-19	First issue	PU	JB		

Charlie Ratchford, Extra Care
Elevations Sheet 3

AA4796C-4039 REV C
Construction
Drawn Author Checked Date 11/21/18 Scale @ A1 As Indicated