

- NOTES
1.

DO NOT SCALE FROM THIS DRAWING.
2.

THIS DRAWING IS TO BE READ IN CONJUNCTION WITH ALL OTHER RELEVANT DRAWINGS AND SPECIFICATIONS ISSUED BY THE ENGINEER.
3.

ALL DIMENSIONS TO BE CHECKED ON SITE AND THE ENGINEER NOTIFIED OF ANY DISCREPANCIES PRIOR TO COMMENCEMENT OF WORK.
4.

THE POSITION OF ALL EQUIPMENT INDICATED ON THIS DRAWING IS APPROXIMATE. THE EXACT POSITION OF ALL EQUIPMENT TO BE AGREED WITH THE ENGINEER PRIOR TO COMMENCING WORKS.

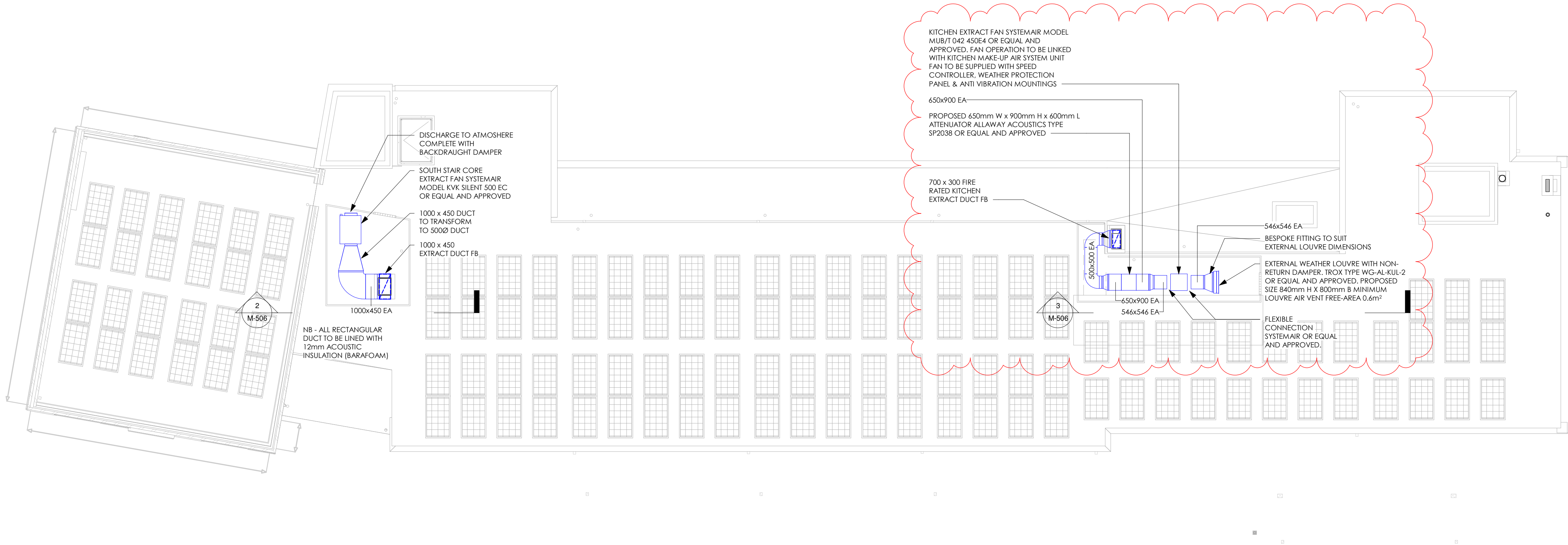
- VENTILATION NOTES
1.

AIR VALVES AND GRILLES ARE TO BE COORDINATED WITH LIGHTS AND OTHER CEILING ACCESSORIES.
2.

WHERE RIGID CONNECTIONS BETWEEN AIR VALVES AND DUCTS CANNOT BE USED DUE TO MOUNTING RESTRICTIONS PROPRIETARY FLEXIBLE DUCT MAY BE USED PROVIDED IT IS MANUFACTURED AND INSTALLED SO AS TO PRODUCE MINIMAL PRESSURE LOSS ACROSS ITS LENGTH. THE FLEXIBLE CONNECTION LENGTH SHOULD NOT EXCEED 500mm. ON AIR SUPPLY SYSTEMS FLEXIBLE DUCTS TO BE THERMALLY INSULATED.
3.

COOKER EXTRACT HOOD TO BE SPECIFIED BY OTHERS.
4.

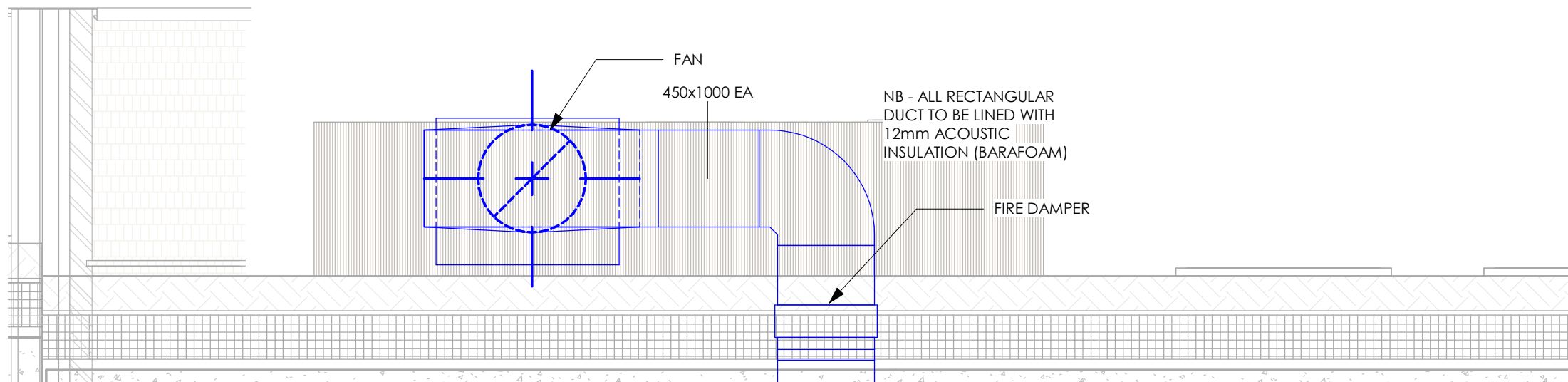
ALL DUCTWORK PASSING THROUGH FIRE BARRIERS TO HAVE INTUMESCENT FIRE COLLARS INSTALLED.



1

Roof Ventilation Layout

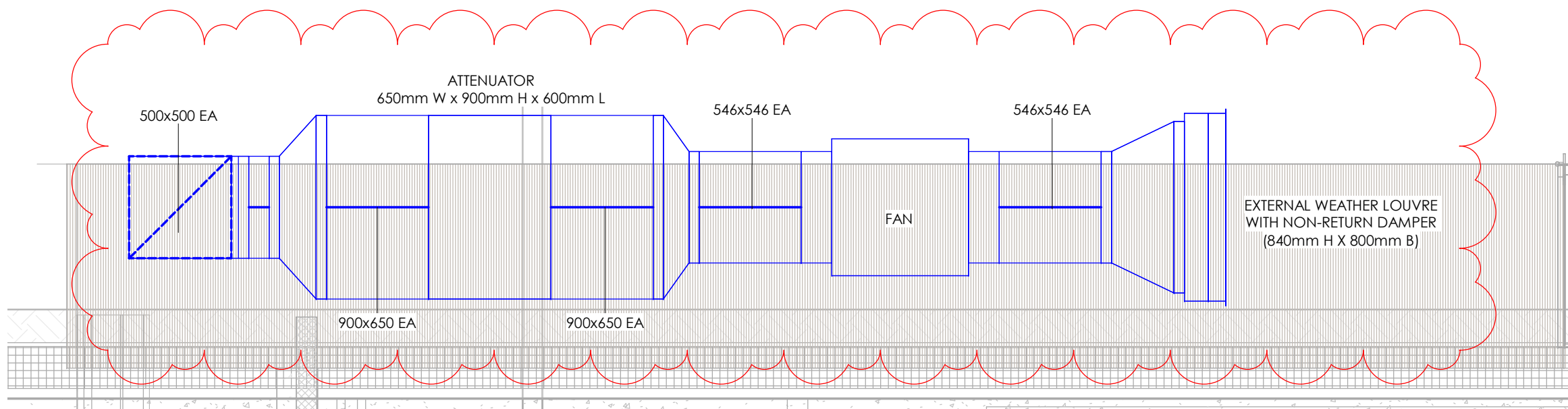
1 : 100



2

South Stair Core Extract Arrangement

1 : 25



3

Kitchen Extract Arrangement

1 : 25

T2	A.C.	SEE REVISION CLOUDS	J.R.	MAR. 2019
T1	A.C.	TENDER ISSUE	J.R.	JAN. 2019
REV	BY	AMENDMENT DESCRIPTION	CHEK	DATE
CLIENT				
GALLIFORD TRY PARTNERSHIPS				
PROJECT				
CHARLIE RATCHFORD, EXTRA CARE CROGSLAND ROAD CAMDEN, LONDON				
TITLE				
ROOF LEVEL VENTILATION SERVICES				
<div><div> nifes Consulting Group</div></div>				
<div><div><input type="checkbox"/> Glasgow 0141 332 2453</div><div><input type="checkbox"/> London 0207 953 0202</div><div><input checked="" type="checkbox"/> Manchester 0161 969 4901</div></div>				
DRAWN		M.P./D.S.	CAD	
CHECKED		D.S.	APPROVED	
SCALE		1:100, 1:25 @ A1	DATE	
			JAN. 2019	
DRAWING No.			20552- M-506	
			T2	
TENDER				