

PREFABRICATED RECONSTITUTED STONE SILL BY LONSDALE STONE LTD.

TO ALIGN WITH SHOP FRONT FASCIA

44MM x 44MM PLANED KILN DRIED TIMBER BATTEN, CLAD ON ALL SIDE IN NORDIC BROWN LIGHT COPPER CLADDING BY AURUBIS. ALL IMPORTED TIMBER TO COMPLY WITH BS EN 350-2.

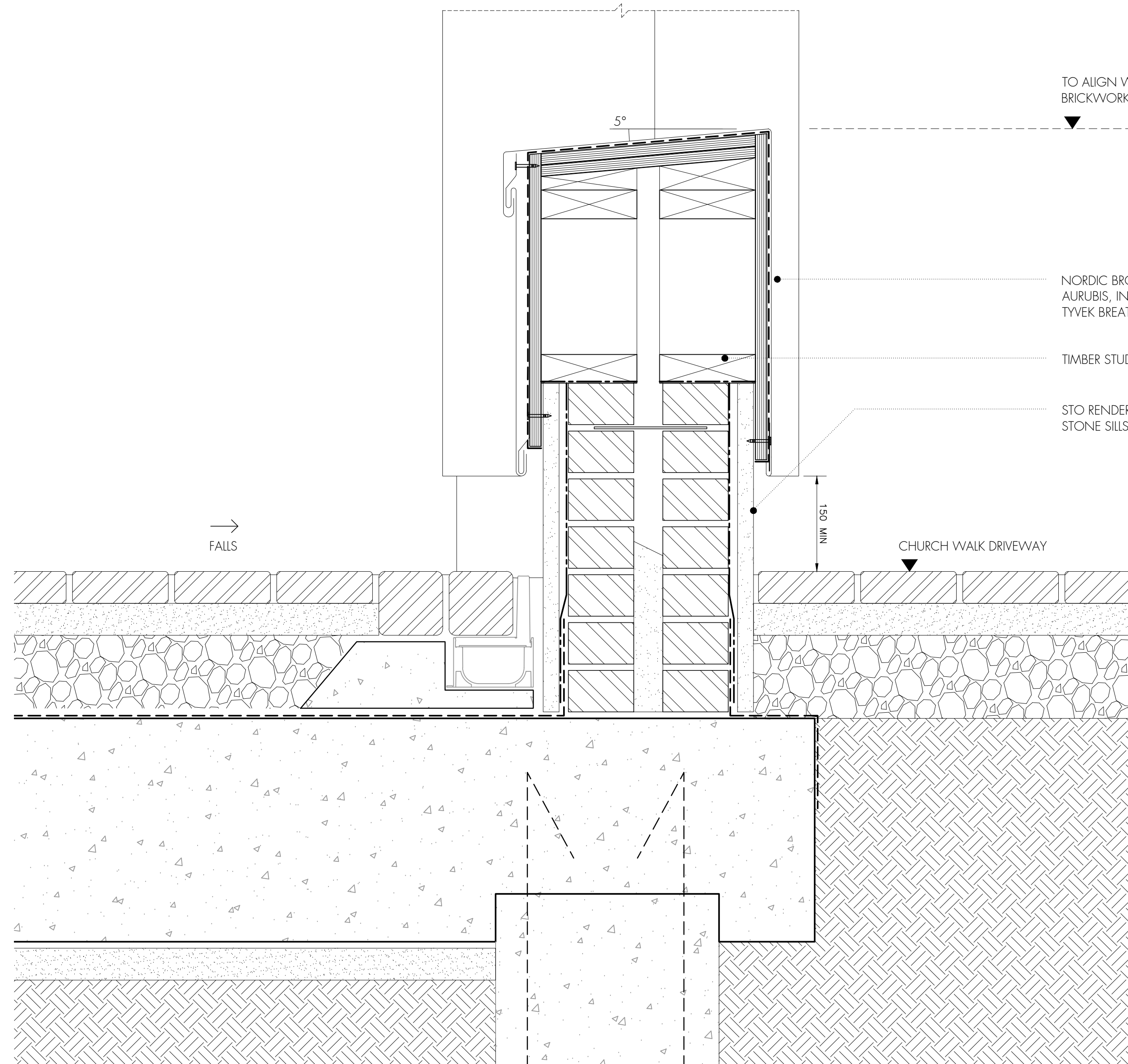
METAL SUPPORT ANGLE FOR TIMBER FIN TO S.E. DETAILS.

75MM RIGID INSULATION FIXED BACK TO RC FRAME, ENCLOSED IN 18MM WBP PLY. NOT TO BE REMOVED WHEN TIMBER SHOP FASCIAS ARE INSTALLED.

NORDIC BROWN LIGHT COPPER CLADDING BY AURUBIS, INSTALLED BY SPECIALIST SUB CONTRACTOR, ON TYVEK BREATHER MEMBRANE.

TO ALIGN WITH THE ADJACENT PERFORATED BRICKWORK

44MM x 219MM REDWOOD PLANED KILN DRIED TIMBER FIN, CLAD ON ALL SIDE IN NORDIC BROWN LIGHT COPPER CLADDING BY AURUBIS. ALL IMPORTED TIMBER TO COMPLY WITH BS EN 350-2.



TO ALIGN WITH THE ADJACENT PERFORATED BRICKWORK DETAIL

NORDIC BROWN LIGHT COPPER CLADDING BY AURUBIS, INSTALLED BY SPECIALIST SUB CONTRACTOR, TYVEK BREATHER MEMBRANE, ON PLY FACE.

TIMBER STUD WALL ON ENGINEERING BRICKS.

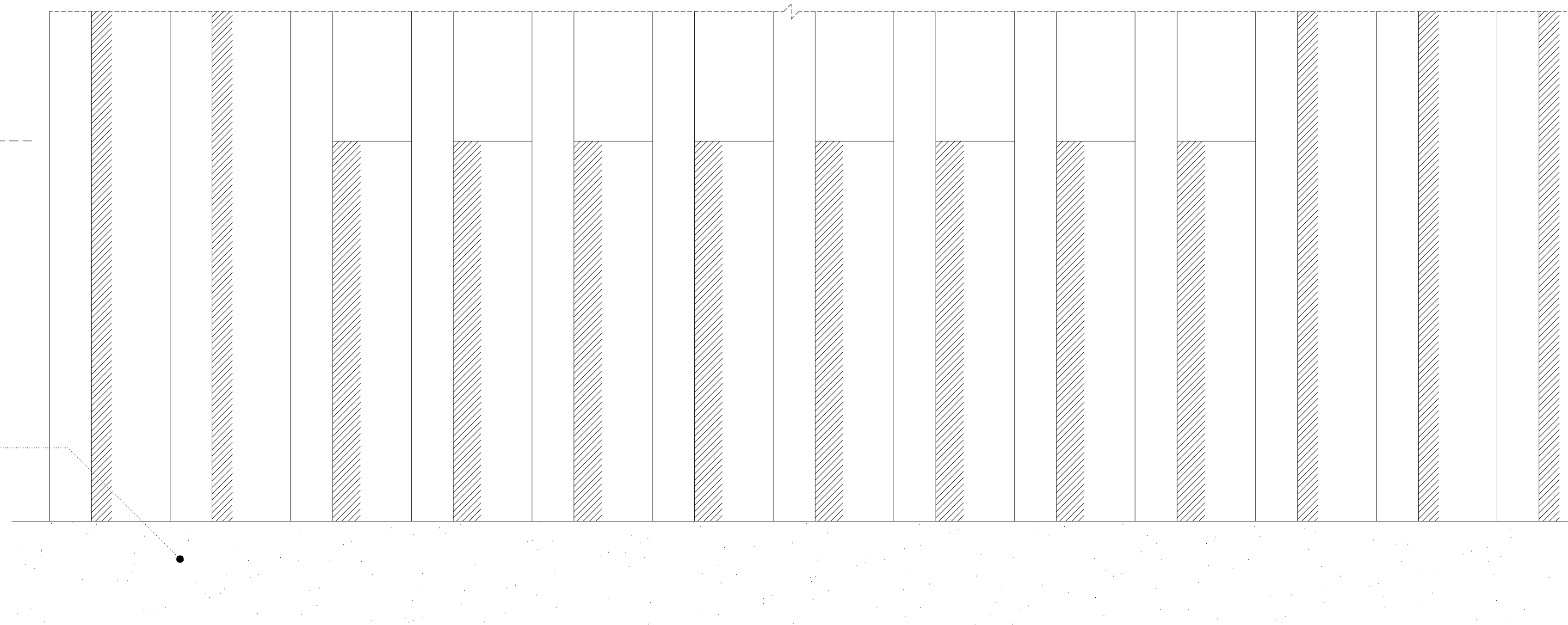
STO RENDER SYSTEM OR SIMILAR, COLOR TO MATCH STONE SILLS.

FALLS

CHURCH WALK DRIVEWAY

DETAIL DD-145

SECTION AA



DETAIL DD-145

ELEVATION

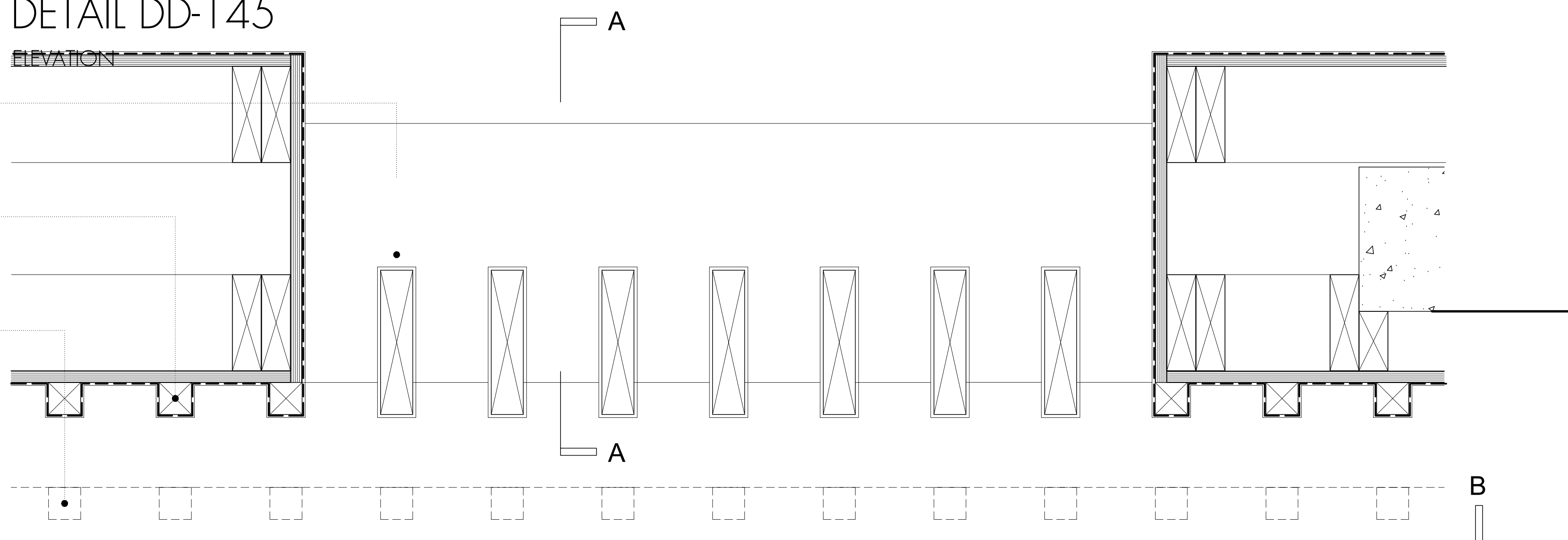
44MM x 219MM REDWOOD PLANED KILN DRIED TIMBER FIN, CLAD ON ALL SIDE IN NORDIC BROWN LIGHT COPPER CLADDING BY AURUBIS. ALL IMPORTED TIMBER TO COMPLY WITH BS EN 350-2.

44MM x 44MM PLANED KILN DRIED TIMBER BATTENS, CLAD IN NORDIC BROWN LIGHT COPPER CLADDING BY AURUBIS. ALL IMPORTED TIMBER TO COMPLY WITH BS EN 350-2.

COPPER CLAD TIMBER BATTENS OVERHEAD

DETAIL DD-145

PLAN



Do not scale off this drawing.

All indicated dimensions to be checked and verified on site by the Main Contractor before commencement of any fabrication drawings or work whatsoever on site.

Report all discrepancies to the Architect immediately. This drawing is to be read in conjunction with all the related Architect's and Structural Engineer's drawings, details and all relevant information.

CONSTRUCTION ISSUE

rev.	rev. date	rev. description

tasou
associates
architects + structural engineers

4 Amwell Street, London, EC1R 1UG T: 020 7713 7070 F: 020 7713 7071 E: tasou@tasou.co.uk		
project Swain's Lane London N6 6QX		
drwg title East Building Ground Floor Fin Details PLANNING		
date May 2019	drwg no. DD-145	rev.
scale @ A0 1:10 @ A1 1:5 @ A0	job no. 1658	
© copyright of tasou associates		