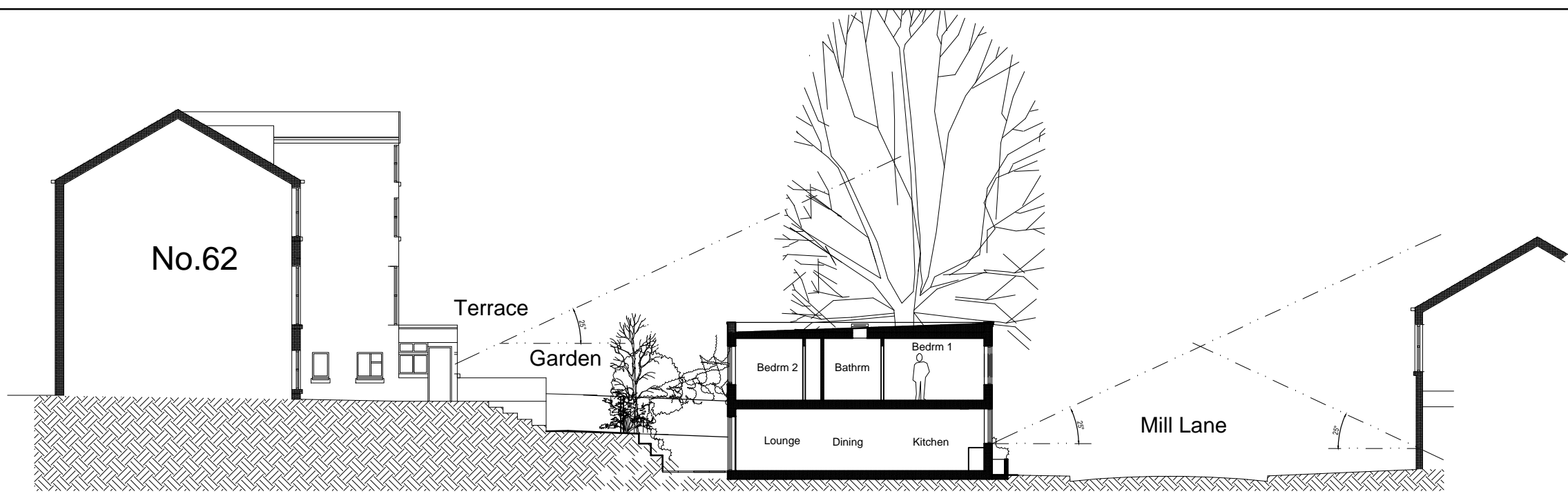


Site Section as Existing



Site Section as Proposed

Planning

- NOTES:
- E. Revised in response to planners comments LNW 20-5-19
 - C. Revised in response to planners meeting LNW 29-4-19
 - B. Revised in response to planners comments LNW 19-3-19

REV	AMENDMENTS	BY	DATE
<div><div><div>BFA</div><div>ARCHITECTS</div></div><div><div>24a Sedley Taylor Rd</div><div>Cambridge CB2 8PN</div><div>tel: +44 1223 413 064</div><div>leon.w@bfa-ltd.co.uk</div><div>www.bfa-ltd.co.uk</div></div></div>			
<div>All dimensions to be checked on site. Any discrepancies to be reported to the Architect immediately.</div> <div>The drawing is not to be scaled.</div> <div>THIS DRAWING IS COPYRIGHT</div>			
Drawn By		Checked By	
BFA		LNW	
Date		Scale	
Sept '18		1:100 @ A1 1:200 @ A3	
Drw Title			
Site Section as Existing & Proposed			
Project			
Proposed Dwelling at 62 Hillfield Road, West Hampstead London NW6 1QA			
Drawing No.		Rev	
918-P-04		E	