

DIRECTORS: R. A. BAILEY, J. T. BETT, G. E. BOURKELL-WADE, F. D. S. JERRARD, T. JOHNSTONE, W. E. THORNE



SYNCHRO TIME SYSTEMS LTD

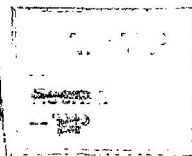
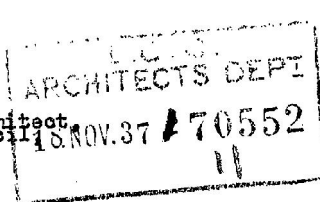
MEXICAN HOUSE, 17 ALBION STREET
KINGS CROSS, LONDON, N.1
TERMINUS 2133-4

TJ/GMS.

Ext. 7.

17th November, 1957.

The Superintending Architect,
The London County Council,
Architects Dept.,
The County Hall,
London, S. E. 1.



Dear Sir,

We beg to give you notice of our intention to erect an
Outside Electric Clock Sign at No. 31 Argyle St., W.C.1.
for

COSMO HOTEL

of the same address, and in accordance with the usual practice we are submitting herewith a set of drawings, comprising a tracing and two blue prints for approval.

This clock operates direct from the mains 230 volts 50 cycles controlled frequency, and the illumination of the clock and panels is controlled by an ordinary time switch (non intermittent lighting). The fixing and installation would be carried out by us and would conform with the L. C. C. regulations.

As we are under contract to complete the installation within a limited period, we shall consider it a favour if you will kindly inform us whether the work could be proceeded with at once.

Kindly note we have forwarded copy of the plans to the St. Pancras Borough Council.

Yours faithfully,
SYNCHRO TIME SYSTEMS LTD.

ENCS.

