

For the attn of Jonathan McClue

Regeneration and Planning Development Management
London Borough of Camden
Tower Hall
Judd Street
London
WC1H9JE

29th May 2019

Dear Mr. McClue,

52, Holmes Road, London, NW5 3AB – Application for Discharge of Condition 3

In reference to planning decision: 2018/3318/P from parent application: 2016/1986/P

List of material and external finishing:

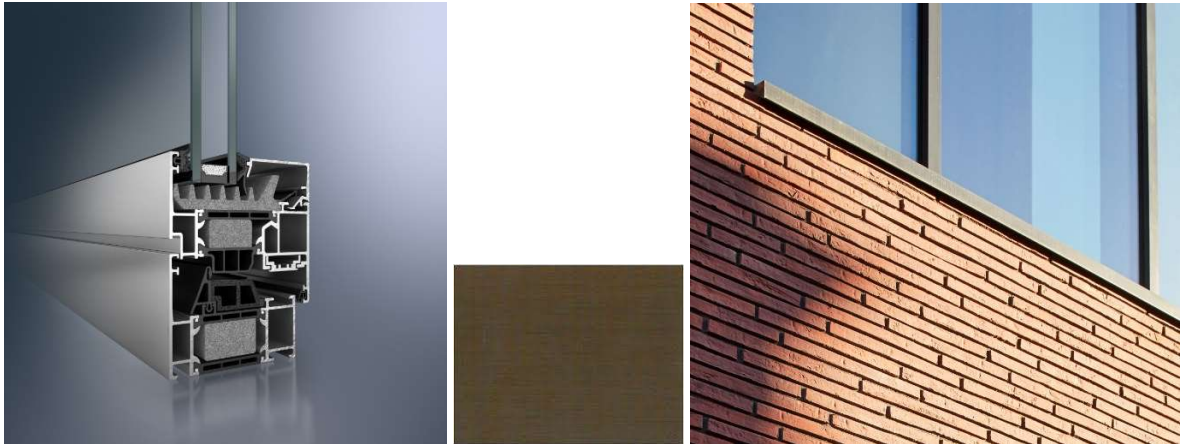
Please refer to drawings 1816/PC/910, 1816/PC/911 and 1816/PC/912 for technical details and general finishing, etc.

Also, please see proposed location and type of external lights in the entrances and around the planter box shown in the drawing 1816/PC/911 for your approval.

A) WINDOWS

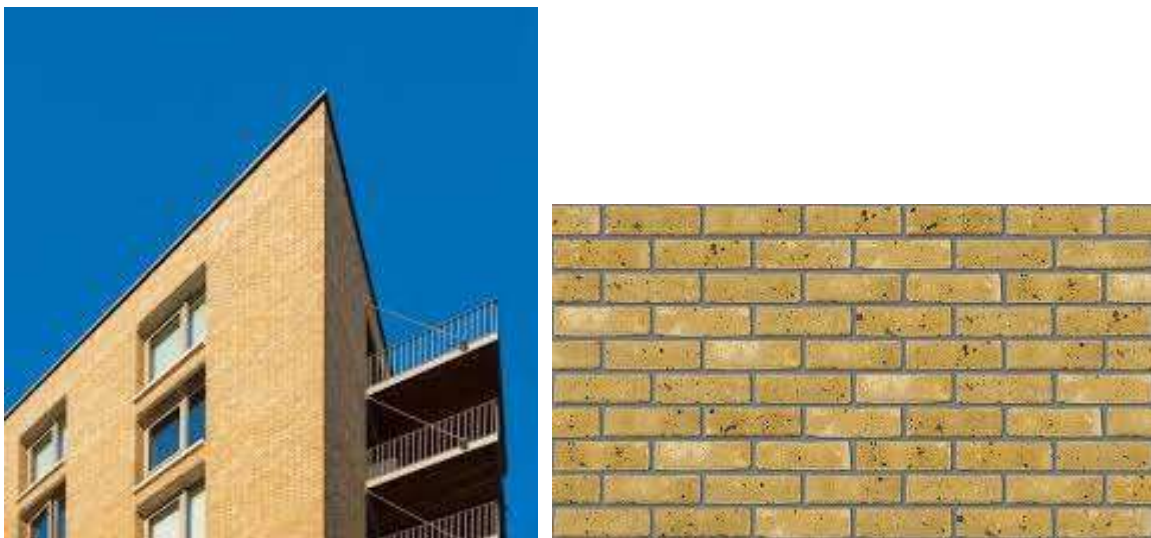
Please refer to drawing 1816/PC/912.

Schuco AWS 75.SI aluminium double frame colour anodised bronze (external) RAL 9010 (CLASSIC WHITE -INTERNAL) or s.a.



B) BRICKWORK, RENDERING & BIN ENCLOSURES

Bricks for the external façade: Smeed Dean London stock bricks



Render finishing: Light sandstone colour



Bin Store: FSC Hardwood panels (see drawing 1816/PC/911).



C) PLANTER – EXTERNAL Position close to front door.

Please refer to drawing 1816/PC/911

D) BALUSTRADE



Stainless steel handrail, set back from balustrade to prevent climbing, powder coated green as shown in the design access statement. Please refer to drawing 1816/PC/910.

E) OBSCURED GLASS



White Frosted Glass

F) MANUFACTUER'S SPECIFICATION DETAILS OF METAL GRILL OVER FRONT LIGHTWELL

Please refer to drawing 1816/PC/911