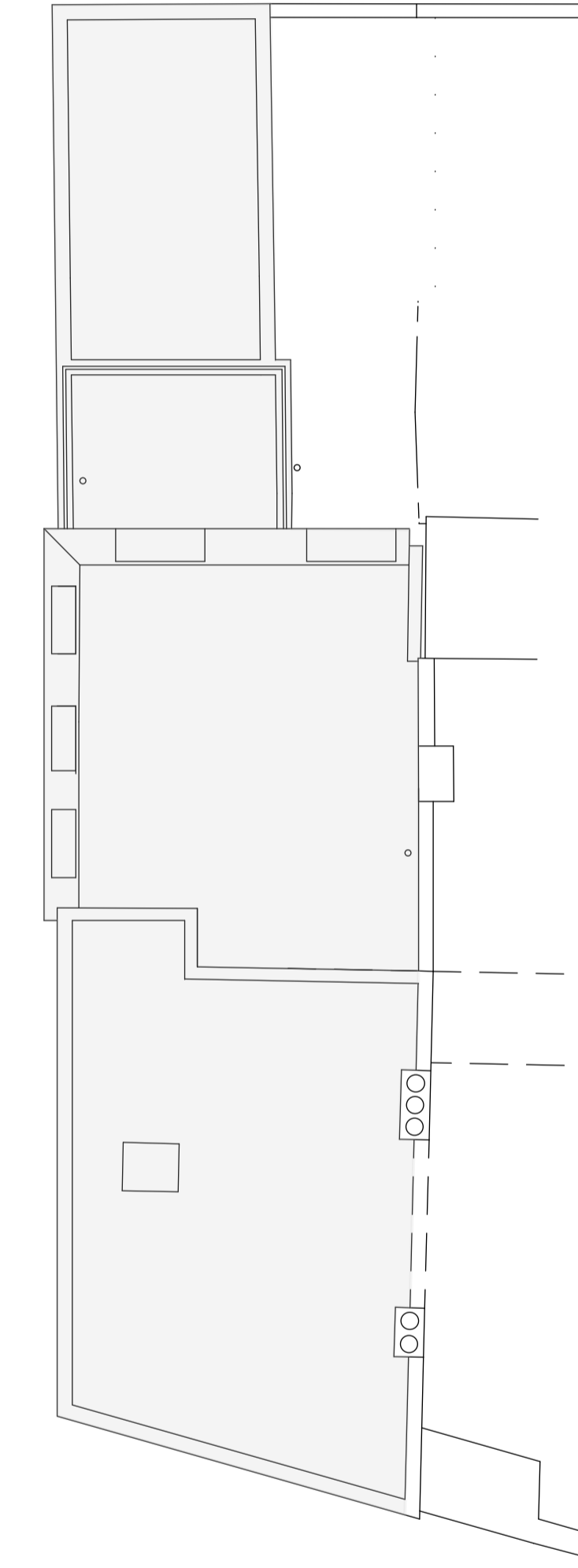
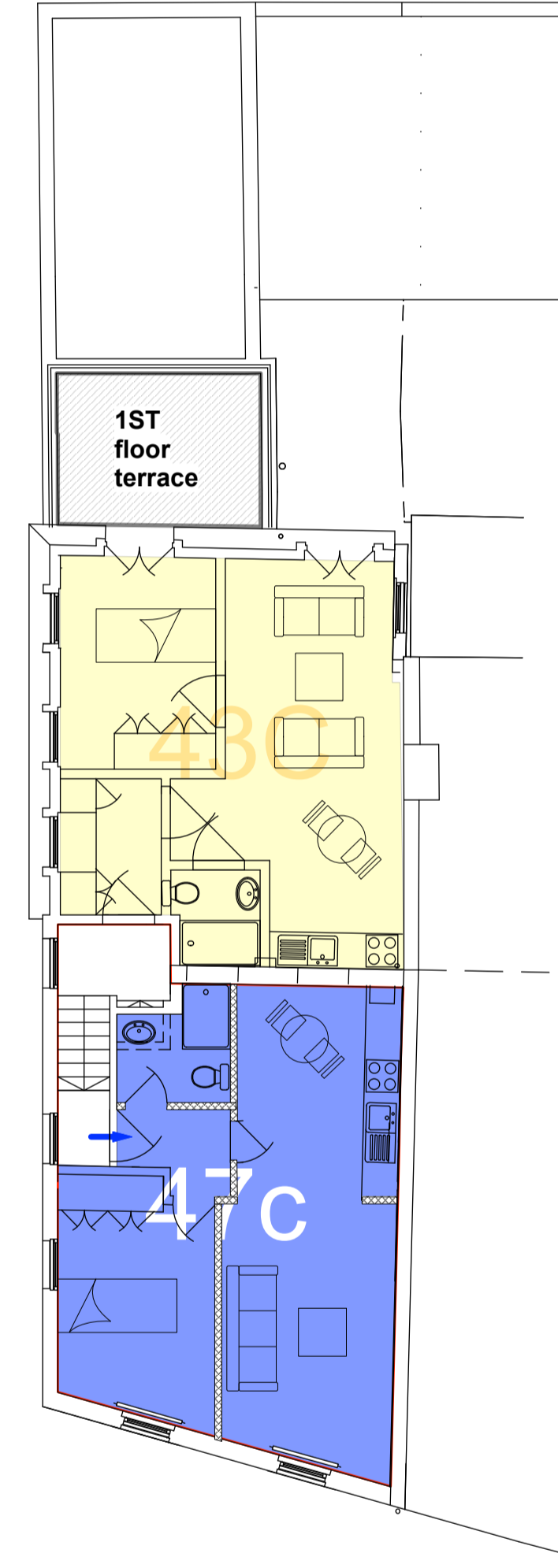
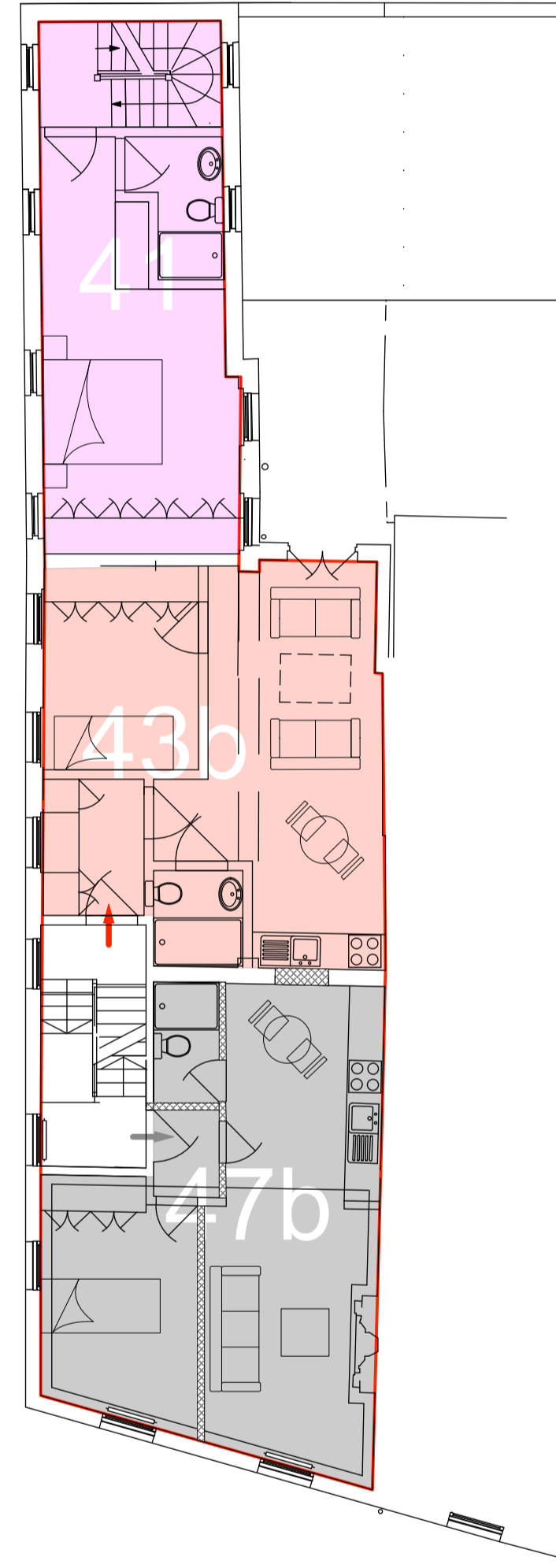
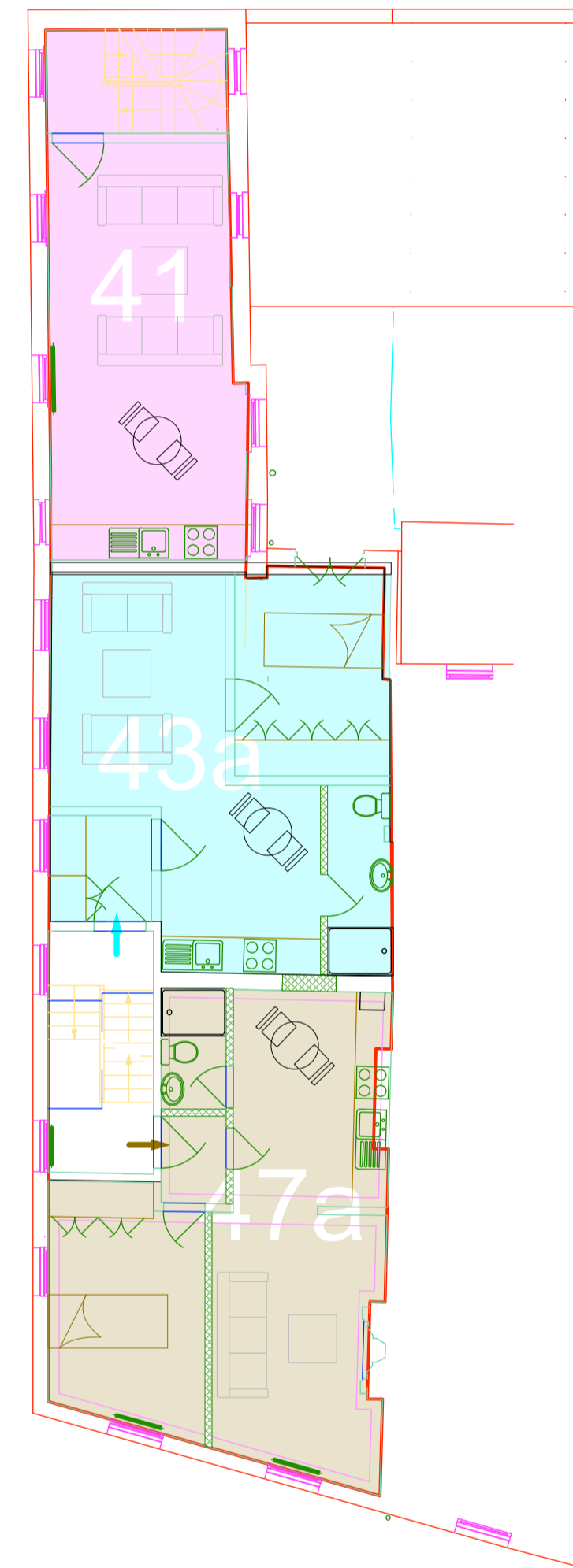
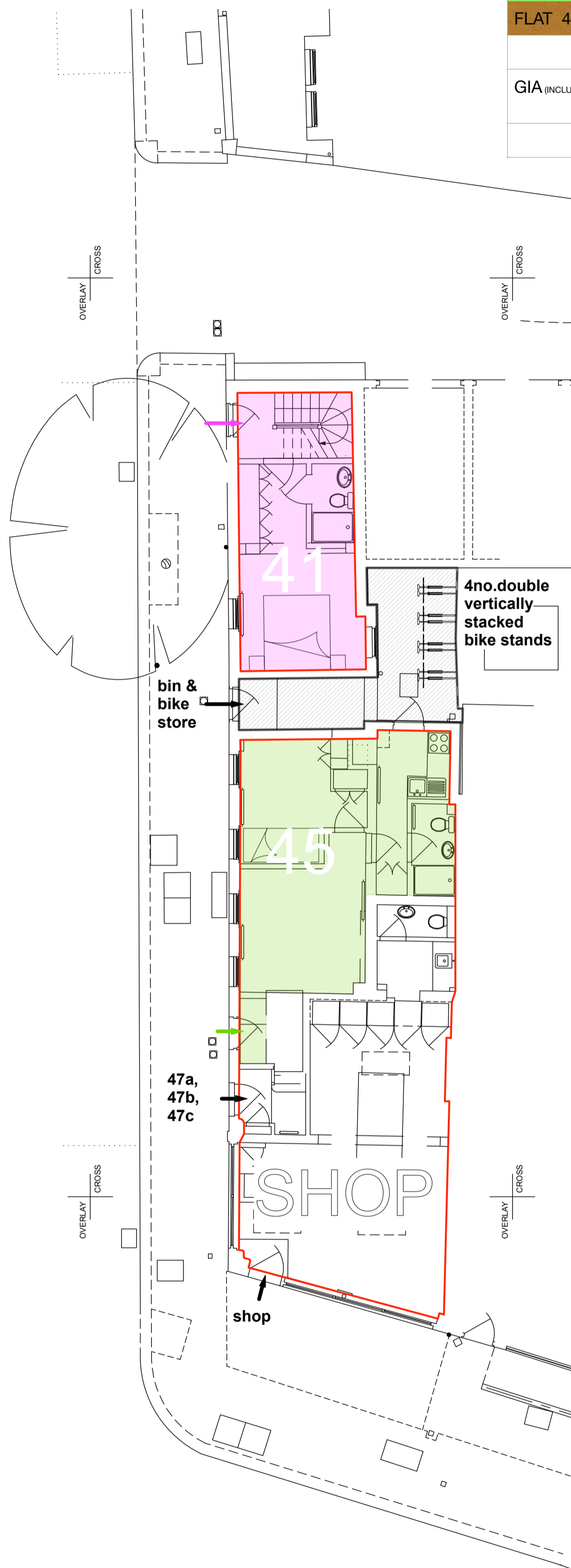


EXISTING FLOOR AREAS				
	AREA SQM	AREA SQFT	No. of beds	RESIDENTIAL STANDARDS
FLAT 41	35	376.6	1D/C	39(37)
FLAT 43	53	570.28	1(2 person)	50
FLAT 45	33	355.08	1D/C	39(37)
FLAT 47	90	968.4	3(4 person)	90(3 storeys)
GIA (INCLUDING SHOP)	260	2797.6		4no. existing flats

PROPOSED FLOOR AREAS - NIA				
	AREA SQM	AREA SQFT	No. of beds	RESIDENTIAL STANDARDS
FLAT 41	79	850.04	2(4 person)	79
FLAT 43a	37	398.12	1(1 person)	37
FLAT 43b	37	398.12	1(1 person)	37
FLAT 43c	37	398.12	1(1 person)	37
FLAT 45	33	355.08	1(1 person)	37
FLAT 47a	37	398.12	1(1 person)	37
FLAT 47b	37	398.12	1(1 person)	37
FLAT 47c	40	430.40	1(1 person)	37
TOTAL	337	3626.12		
EXTERNAL AMENITY SPACE	24	258.24	4 FLATS (+4 person)	24 SQM
GIA (INCLUDING SHOP)	374	4024.24	3no. new flats	4no. existing flats

Notes

THIS SURVEY HAS BEEN PREPARED WITH A SCALE AND ACCURACY ALL LEVELS ARE IN METRES DERIVED FROM GPS TRANSFORMATION THE COORDINATES ARE DERIVED FROM THE ORDNANCE SURVEY ACTIVE SPOT NETWORK (OSDBASE GRID COORDS 470)



1:100 GROUND FLOOR PLAN

1:100 FIRST FLOOR PLAN

1:100 SECOND FLOOR PLAN

1:100 THIRD FLOOR PLAN

1:100 ROOF PLAN

