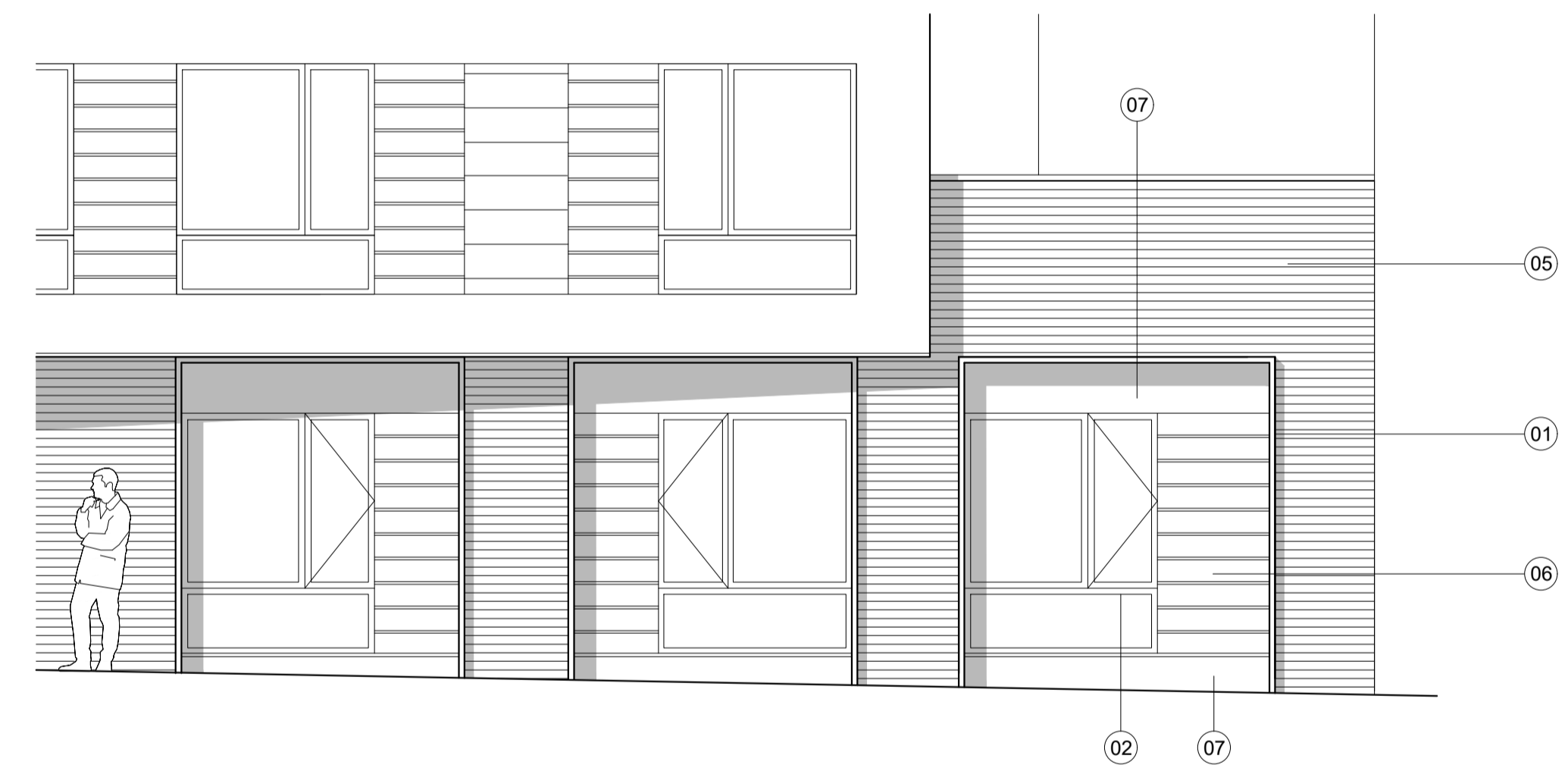


notes
 Copyright : the copyright of this drawing is vested in Fraser Brown MacKenna Architects Ltd. It shall not be used without permission by anyone for any purpose. Do not scale drawings - use figured dimensions only. All dimensions to be verified and checked on site. Read the drawing in conjunction with all related drawings and specifications. Notify architect immediately of any discrepancy found therein.

drawing notes

Materials Key:

- 01 - 50mm thk. projecting aluminium window surround. Colour to match extg. windows. RAL 7012 (mid/dark grey)
- 02 - Aluminium double glazed windows. Colour to match extg. windows. RAL 7012 (mid/dark grey)
- 03 - Render finish to be made good where required and whole elevation repainted to match extg. colour. RAL 1014 (pale cream/green)
- 04 - Glazed aluminium door. Colour to match extg. RAL 7012 (mid/dark grey)
- 05 - Extg. green glazed bricks to be retained.
- 06 - Timber side panelling to match existing.
- 07 - Aluminium fascia at top and bottom of window assembly. Colour: RAL 7012 (mid/dark grey)




Front Elevation Detail

Scale: 1:50 at A1

REV | BY | CHKD | DATE | AMENDMENT DETAILS

project
111-113 Bartholomew Road
Kentish Town, London.
 NW5 2BJ
 client
Axo Student Living

 **FraserBrownMacKennaArchitects**
 15-18 Featherstone St. London EC1Y 8SL. www.fbmaarchitects.com
 T:020 7251 0543

drawing title
Front Elevation Detail

Planning

scale
 1:50 & 1:100@A1
 drawn by
 JSN
 checked by
 FBM
 date
 © 03.05.2019

DRAWING NUMBER
 project status revision
1051 P 2002