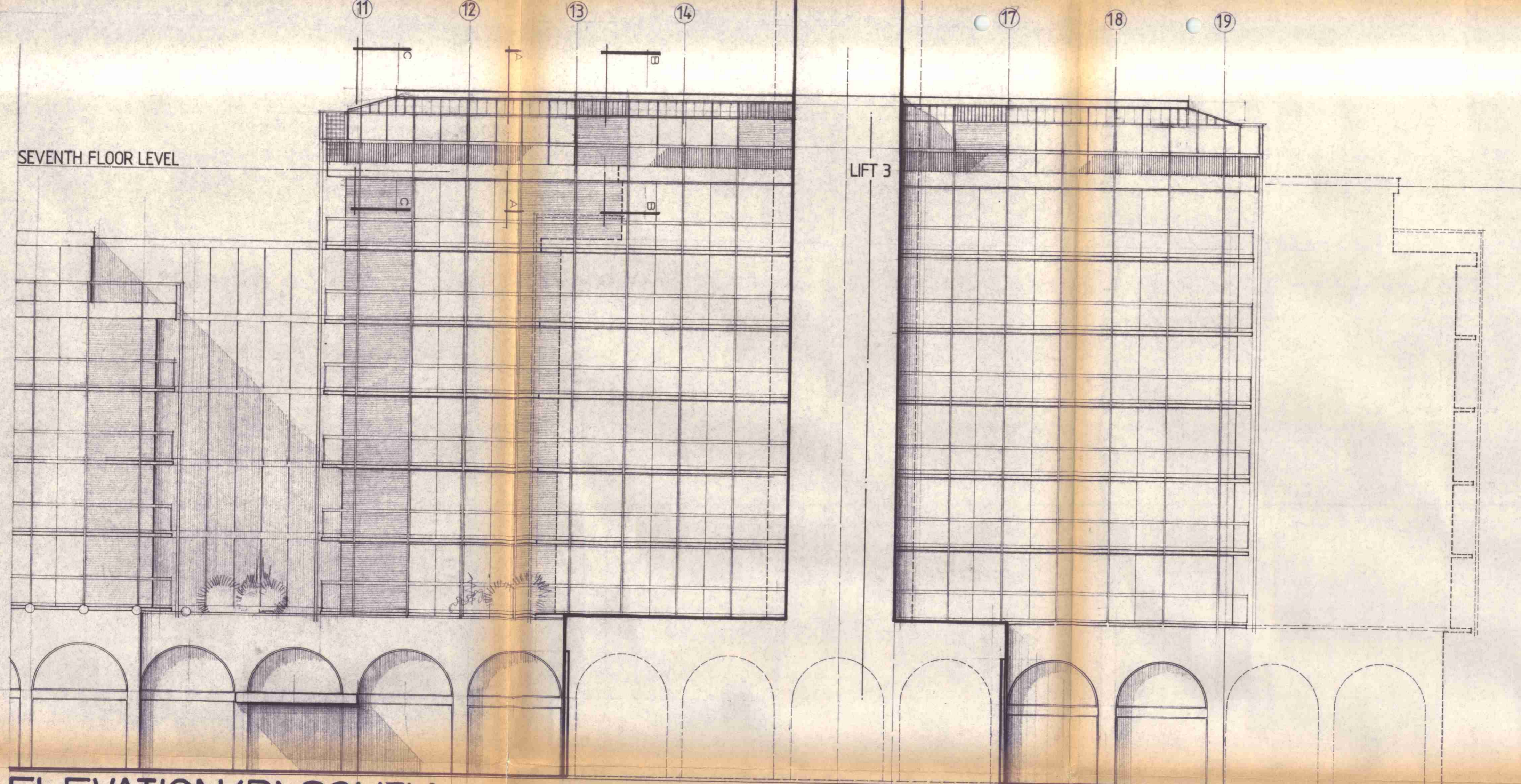
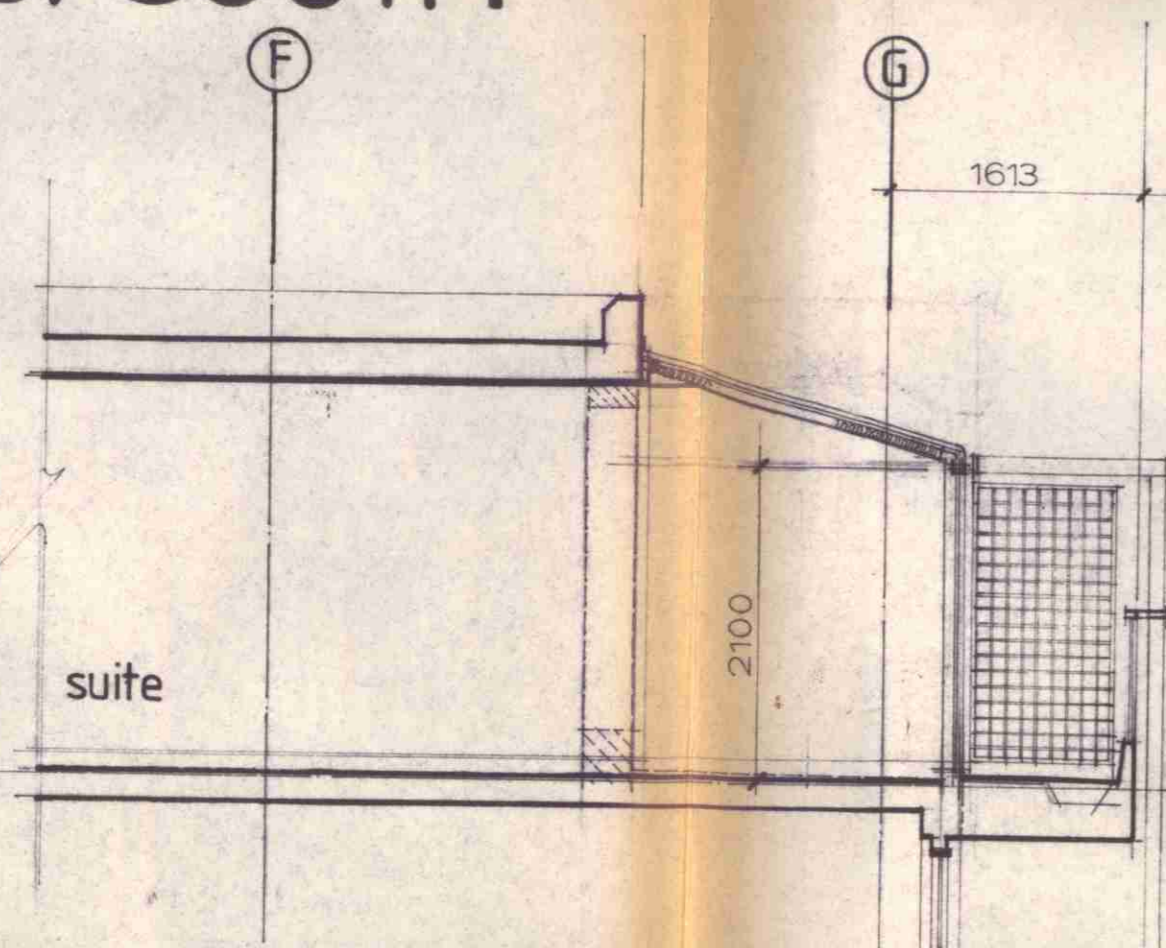


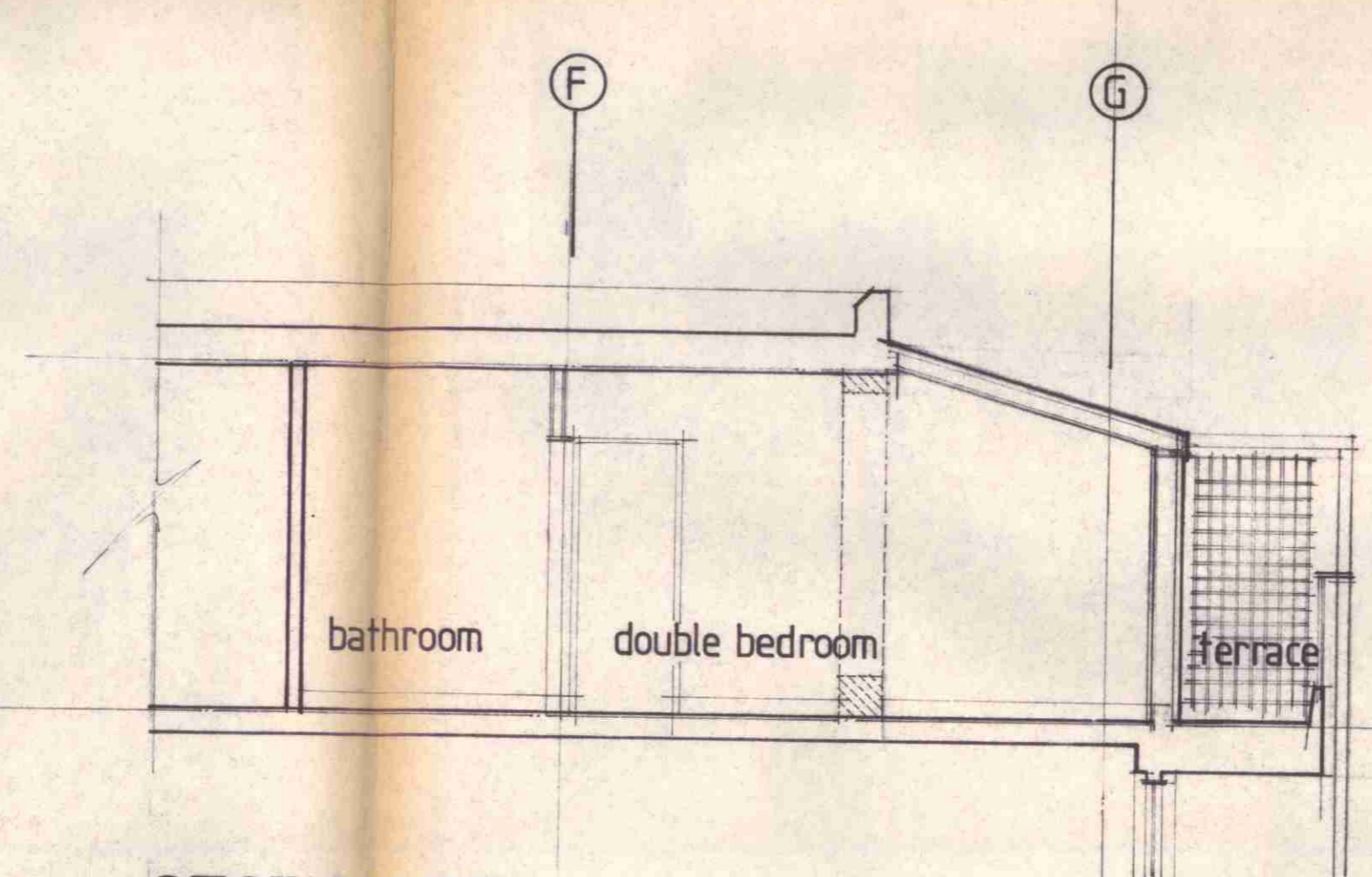
SEVENTH FLOOR LEVEL



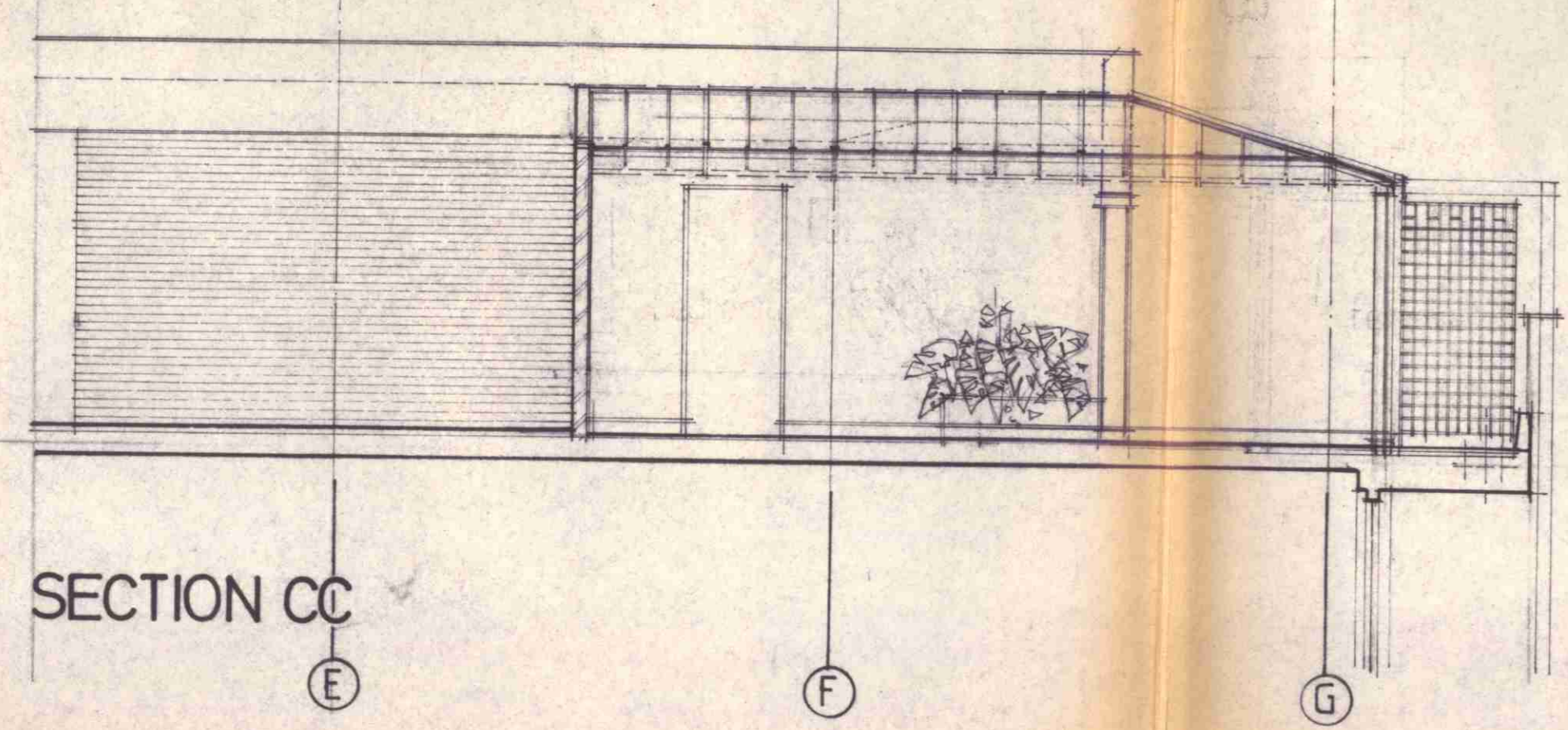
ELEVATION (D) SOUTH



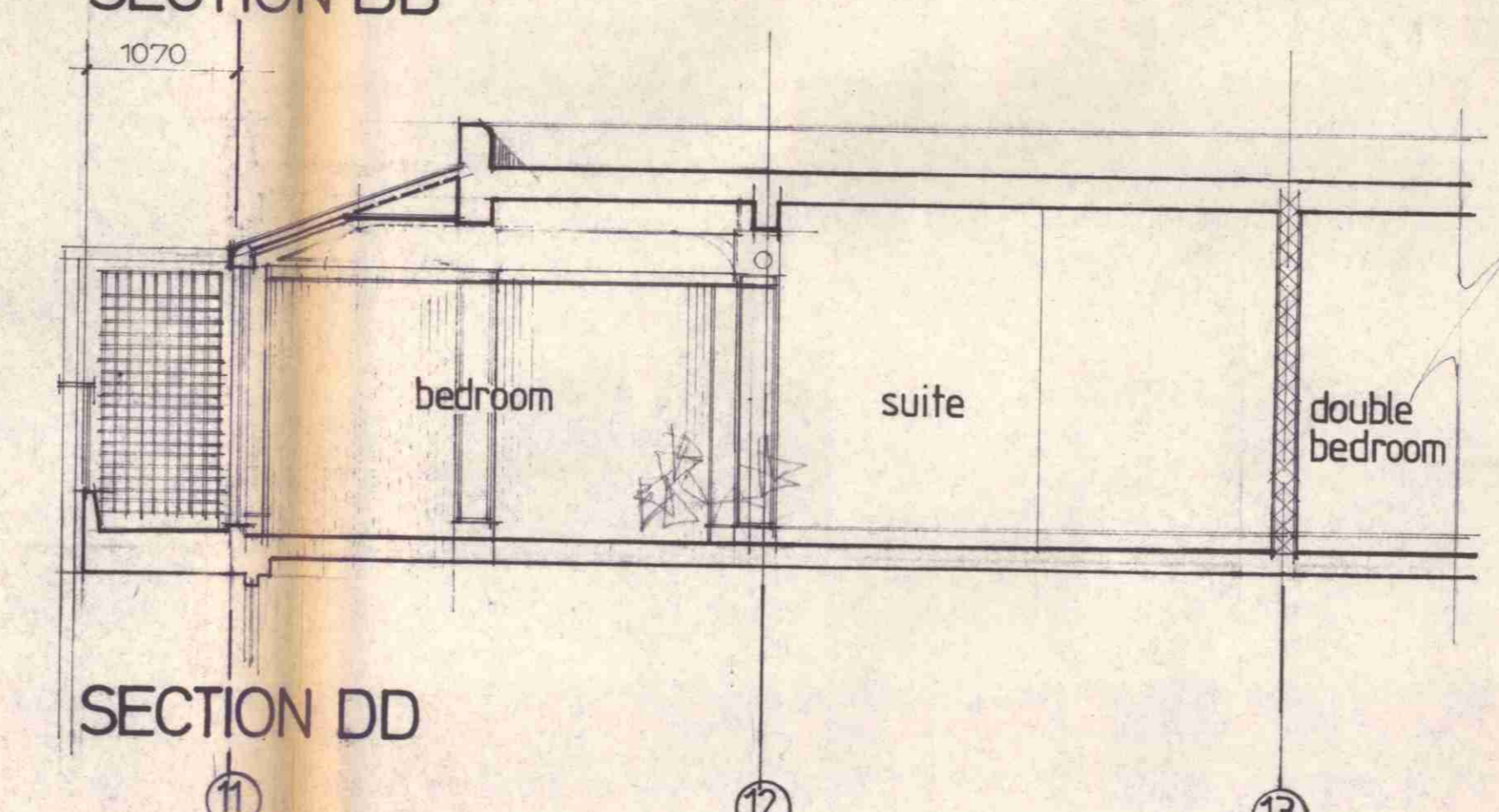
SECTION AA



SECTION BB



SECTION CC



SECTION DD

REVISION A: REVISED SUITE LAYOUTS EFFECTIVE ELEVATIONAL & SECTIONAL ARCHITECTURE

COBBAN & LIRONI
architects & planning consultants
PARK HOUSE, PARK CIRCUS PLACE, GLASGOW G36AN
telephone 041-333 9466 telex 779640

project
Holiday Inn

client
SWISS COTTAGE LONDON
PROPOSED ALTERATIONS & EXTENSIONS

detail
ELEVATION TO SOUTH
SECTIONS AT 7TH FLOOR EXTENSION
TP 8501291

drawing number
872/15/A

scale
1:100
1:50

drawn
JB

date
MAY 1985

LONDON BOROUGH OF CAMDEN
TOWN AND COUNTRY PLANNING ACTS
29 OCT 1985
APPROVED
PLANS NOT APPROVED
ON BEHALF OF THE COUNCIL