

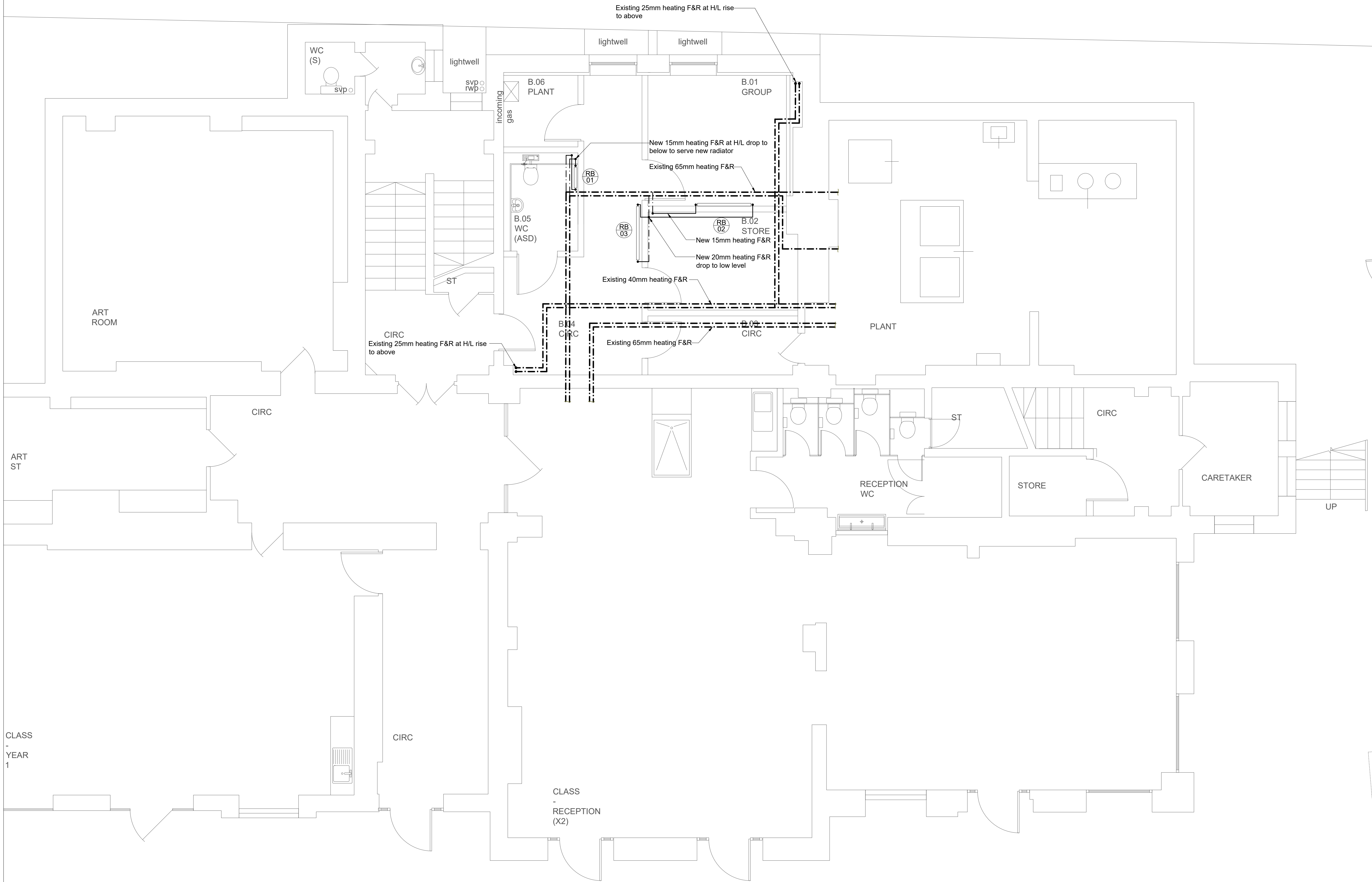
Radiators Schedule									
RAD REF	LOCATION	MANUFACTURER	MODEL	TYPE	HEIGHT (mm)	LENGTH (mm)	OUTPUT (W)	VALVES	NOTES
RB1	WC (ASD)	Stelrad	LST	K2	500	560	348	TRV/LSV	New
RB2	Group	Stelrad	LST	K2	500	1360	1044	TRV/LSV	New
RB3	Circulation	Stelrad	LST	K2	500	1360	1044	TRV/LSV	New

Notes:

- This drawing should be read in conjunction with JSH mechanical services specification ref: EB/CR/5557/M.
- The School has advised that there is asbestos products in the working areas. The Contractor shall communicate with the Main Contractor and the School prior to any works being undertaken.

Legend:

- Pipework run in ceiling void (CV)
- Pipework run at high level (HL)
- Pipework run at low level (LL)
- Pipework run below ground level (UG)
- Pipework drop / rise
- Existing Pipework run in ceiling void (CV)
- Existing Pipework run at high level (HL)
- Existing Pipework run at low level (LL)
- Existing Pipework run below ground level (UG)
- Existing Pipework drop / rise
- Isolating valve (IV)
- Commissioning set (CS)
- Radiator



P01	Tender Issue	CR	EB	05/19
REV	DESCRIPTION	DR'WN	CHK'D	DATE

Johns Slater and Haward
 Chartered Building Services Consultants
 Ardennais House, 6 Sorrel Horse Mews, Grimwade St, Ipswich IP4 1LN
 01473 255965, engineers@jshipswich.co.uk, www.jshipswich.co.uk



CLIENT:

PROJECT:
 Primrose Hill School

DRG TITLE:
 Basement
 Proposed Heating Layout

SCALE: 1:50 @ A1	STATUS: D2 - Tender	PROJECT: 5557.00	ORIGINATOR: JSH
ZONE: XX	LEVEL: B1	TYPE: DR	DRG No. REV M-0200 P01

CLASS
-
YEAR
1

CLASS
-
RECEPTION
(X2)