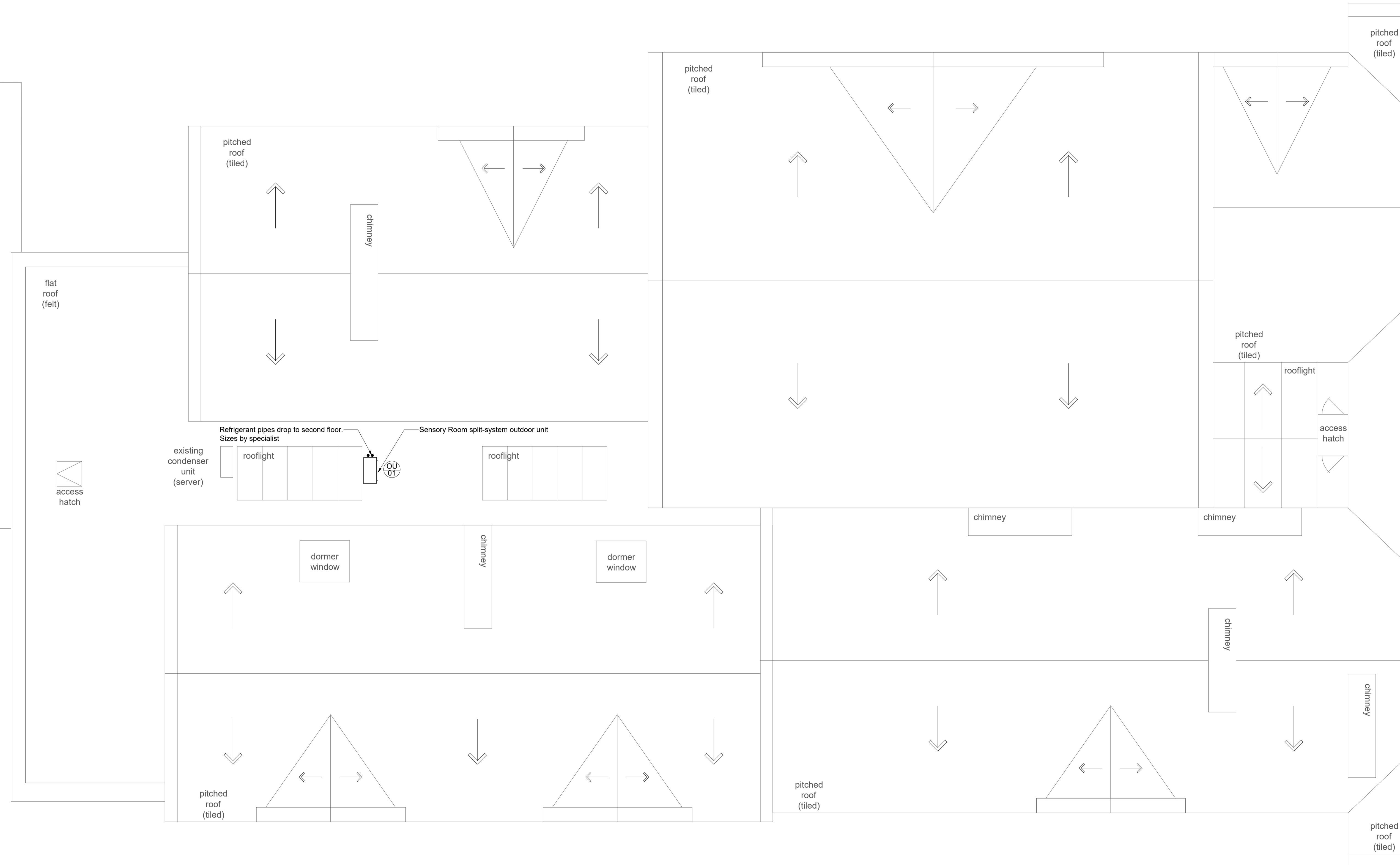
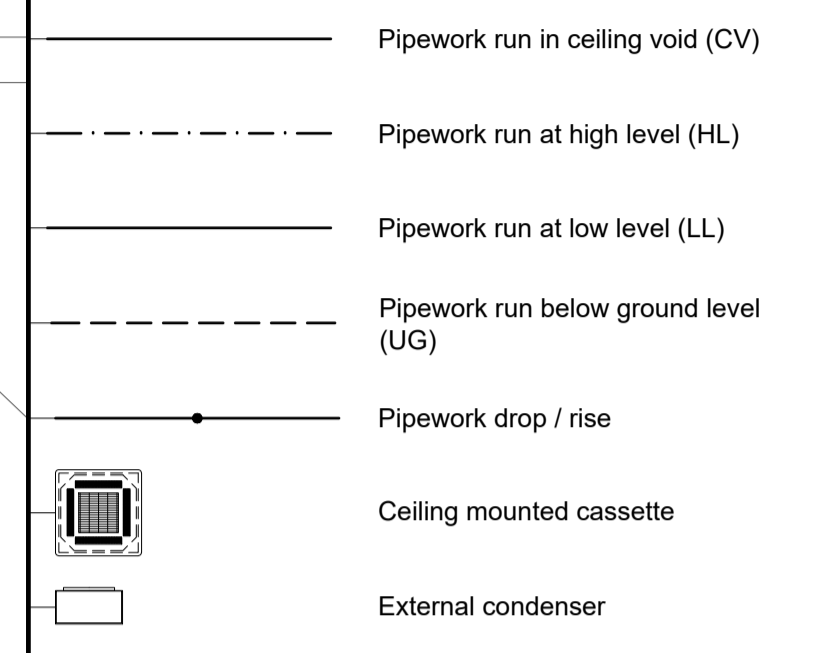


Notes:

1. This drawing should be read in conjunction with JSH mechanical services specification ref: EB/CR/5557/M.
2. The School has advised that there is asbestos products in the working areas. The Contractor shall communicate with the Main Contractor and the School prior to any works being undertaken.

Legend:



P01	Tender Issue	CR	EB	05/19
REV	DESCRIPTION	DR'WN	CHK'D	DATE

Johns Slater and Haward
 Chartered Building Services Consultants
Ardemans House, 6 Sorrel Horse Mews, Grimwade St., Ipswich IP4 1LN
 01473 255965, engineers@jshipswich.co.uk, www.jshipswich.co.uk

CLIENT:

PROJECT:
 Primrose Hill School

DRG TITLE:
 Roof Level
 Proposed Air Conditioning Layout

SCALE: 1:50 @ A1	STATUS: D2 - Tender	PROJECT: 5557.00	ORIGINATOR: JSH
ZONE: XX	LEVEL: 02	TYPE: DR	DRG No. REV M-0501 P01

AIR CONDITIONING OUTDOOR UNITS SCHEDULE										
REF	LOCATION	TYPE	MANUFACTURER	MODEL	DEPTH(mm)	WIDTH(mm)	HEIGHT(mm)	WEIGHT(kg)	ELECTRICAL	CONTROLS
OU 01	Sensory Room	DX	Mitsubishi	SUZ-M35VA	285	800	550	35	230V 50Hz Single-Phase	-