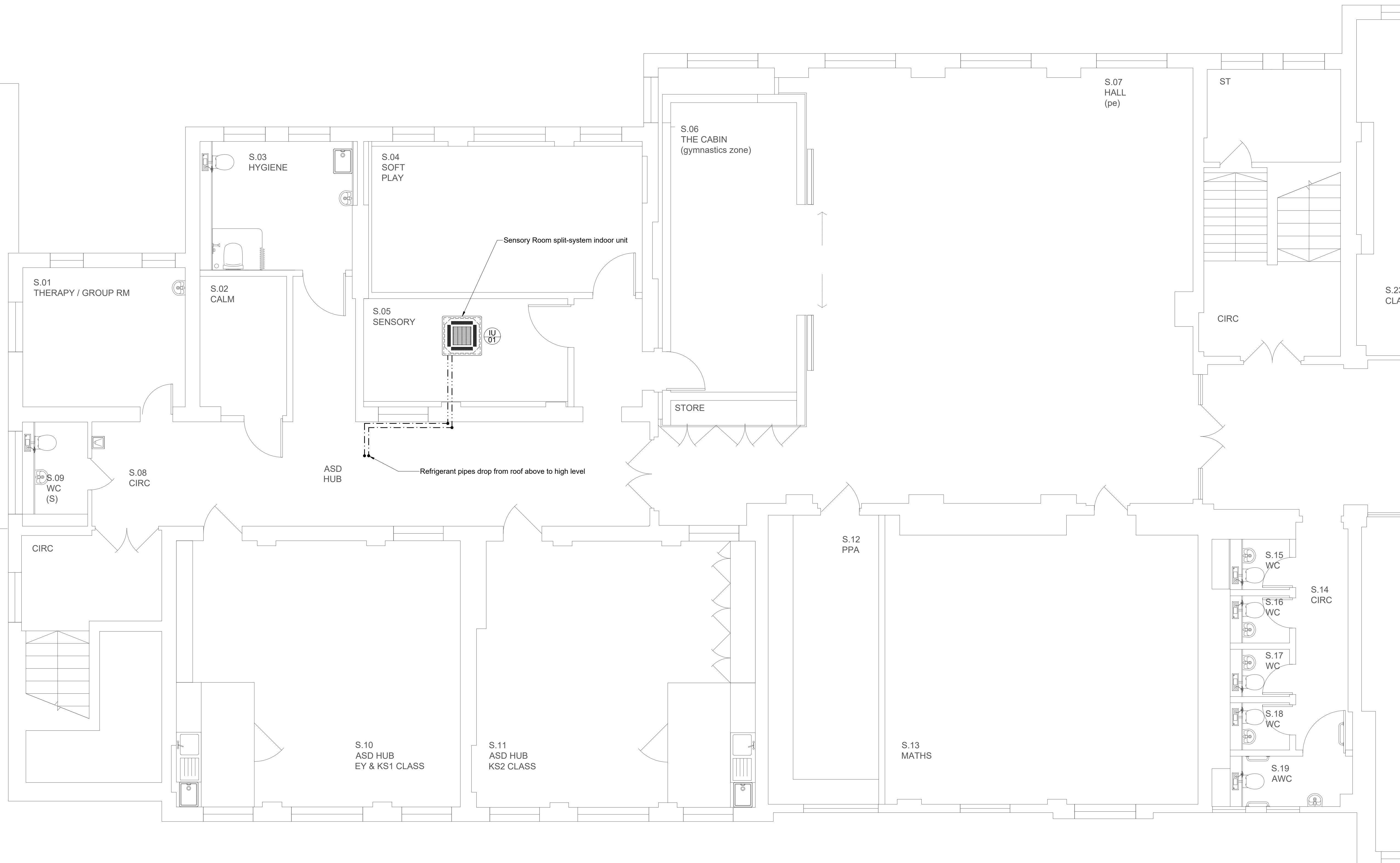
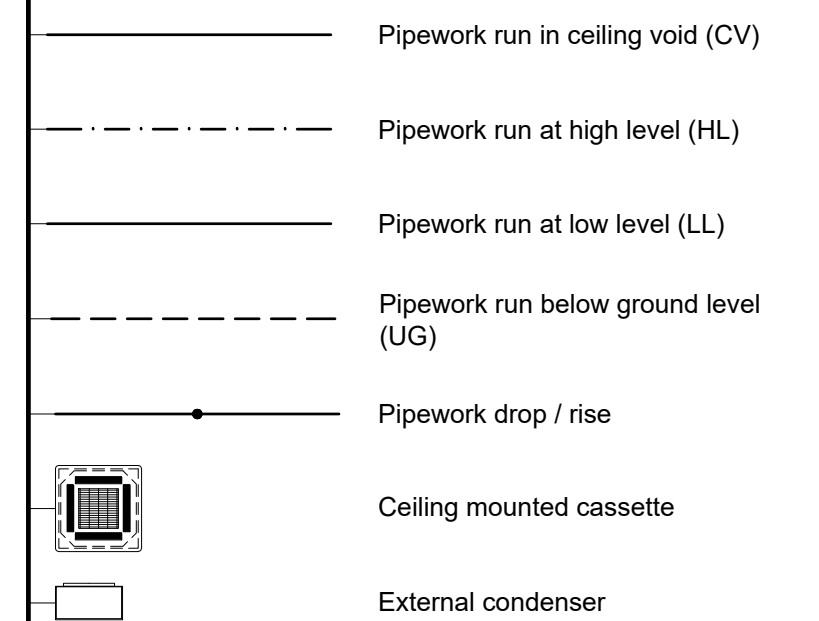


COPYRIGHT
This drawing is copyright and may not be altered, reproduced or used other than for the Contract Works for which it is issued without written permission.
© : Johns Slater and Haward Ltd.

Notes:

1. This drawing should be read in conjunction with JSH mechanical services specification ref: EB/CR/5557/M.
2. The School has advised that there is asbestos products in the working areas. The Contractor shall communicate with the Main Contractor and the School prior to any works being undertaken.

Legend:



AIR CONDITIONING INDOOR UNITS SCHEDULE												
REF	LOCATION	TYPE	MANUFACTURER	MODEL	LENGTH(mm)	WIDTH(mm)	HEIGHT(mm)	WEIGHT(kg)	HEATING (kW)	COOLING (kW)	ELECTRICAL	CONTROLS
IU 01	Sensory Room	Ceiling cassette	Mitsubishi	PLA-M35EA	950	950	298	24	3.5	3.3	230V 50Hz Single-Phase	-

S	P01	Tender Issue	CR	EB	05/19
Q	REV	DESCRIPTION	DR'WN	CHK'D	DATE

Johns Slater and Haward
Chartered Building Services Consultants
Ardennais House, 6 Sorrel Horse Mews, Grimwade St, Ipswich IP4 1LN
01473 255965, engineers@jshipswich.co.uk, www.jshipswich.co.uk

JSH

CLIENT:



PROJECT:

Primrose Hill School

DRG TITLE:
Second Floor
Proposed Air Conditioning Layout

SCALE: 1:50 @ A1	STATUS: D2 - Tender	PROJECT: 5557.00	ORIGINATOR: JSH	
ZONE: XX	LEVEL: 02	TYPE: DR	DRG No. M-0500	REV P01