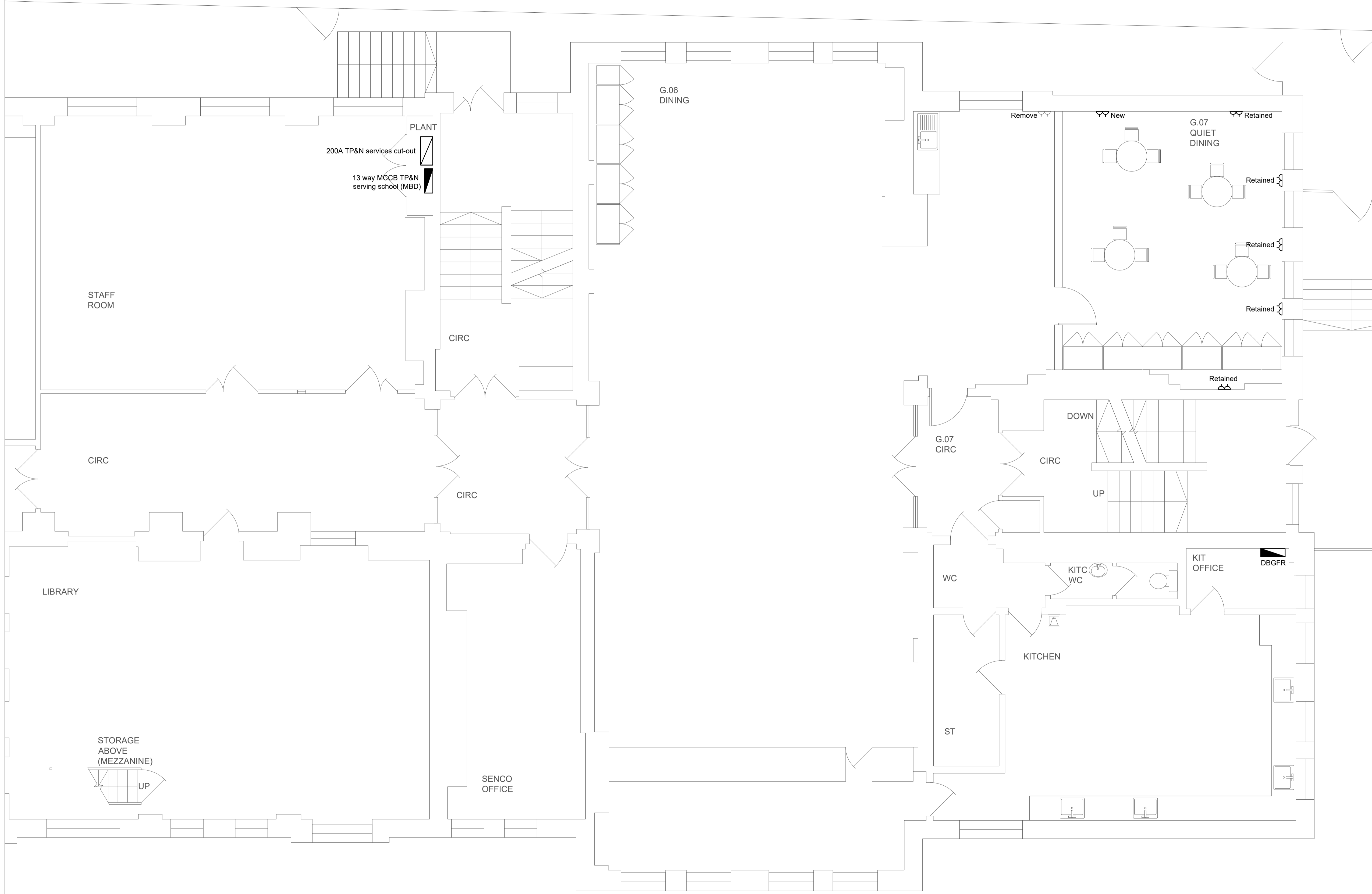


FOR CONTINUATION SEE DRAWING No. 5557-JSH-XX-ZZ-DR-E-0301



COPYRIGHT
 This drawing is copyright and may not be altered, reproduced or used other than for the Contract Works for which it is issued without written permission.
 © : Johns Slater and Haward Ltd.

- Notes:**
1. This drawing should be read in conjunction with JSH electrical services specification ref: EB/CR/5557/E.
 2. The School has advised that there is asbestos products in the working areas. The Contractor shall communicate with the Main Contractor and the School prior to any works being undertaken.

- Legend:**
- Main distribution panel
 - Local distribution board
 - Single switched socket outlet
 - Double switched socket outlet
 - Switched fused connection unit
 - Spur connection unit and triple pole switch for extract fan
 - Spur connection unit and triple pole switch for extract fan
 - Spur connection unit and triple pole switch for macerator
 - Spur connection unit and triple pole switch for fridge
 - Spur connection unit and triple pole switch for sensor taps
 - Single phase isolator
 - Hair dryer
 - 3 compartment dado trunking
 - Telephone outlet
 - Speaker
 - Single phase isolator
 - Three phase isolator

P01	Tender Issue	JH	EB	05/19
REV	DESCRIPTION	DR'WN	CHK'D	DATE

Johns Slater and Haward
 Chartered Building Services Consultants
Ardemans House, 6 Sorrel Horse Mews, Grimwade St, Ipswich IP4 1LN
 01473 255965, engineers@jshipswich.co.uk, www.jshipswich.co.uk



CLIENT:

PROJECT:
 Primrose Hill Primary School ARP

DRG TITLE:
 Ground Floor
 Proposed Small Power Layout
 Sheet 2 of 2

SCALE: 1:50 @ A1	STATUS: D2 - Tender	PROJECT: 5557.00	ORIGINATOR: JSH
ZONE: XX	LEVEL: 00	TYPE: DR	DRG No. REV E-0302 P01