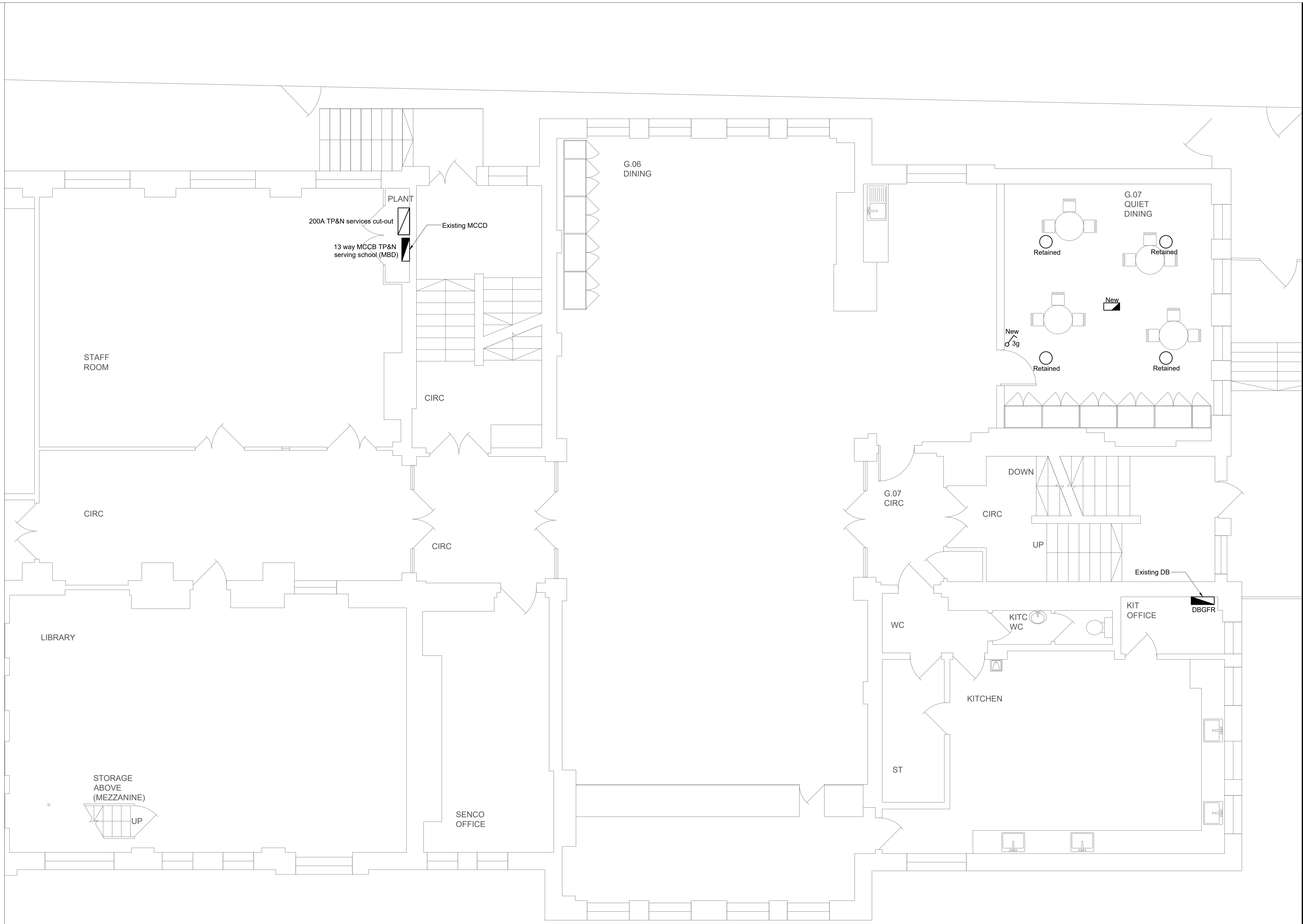


FOR CONTINUATION SEE DRAWING No. 5557-JSH-XX-ZZ-DR-E-0201



**COPYRIGHT**  
This drawing is copyright and may not be altered, reproduced or used other than for the Contract Works for which it is issued without written permission.  
© : Johns Slater and Haward Ltd.

- Notes:**
1. This drawing should be read in conjunction with JSH electrical services specification ref: EB/CR/5557/E.
  2. The School has advised that there is asbestos products in the working areas. The Contractor shall communicate with the Main Contractor and the School prior to any works being undertaken.

- Legend:**
- REF Surface mounted linear fluorescent
  - REF Recessed downlighter
  - Internally illuminated emergency bulk head
  - REF Surface mounted round luminaire
  - N Lighting switch one way (n=no of gangs)
  - N Lighting switch two way (n=no of gangs)
  - Pull cord switch
  - Typical circuit line
  - Typical switch line
  - Typical switch link
  - EM Denotes emergency

REV	DESCRIPTION	JH	EB	05/19
P01	Tender Issue			

**Johns Slater and Haward**  
Chartered Building Services Consultants  
Ardemians House, 6 Sorrel Horse Mews, Grimwade St, Ipswich IP4 1LN  
01473 255965, engineers@jshipswich.co.uk, www.jshipswich.co.uk



CLIENT:  
 Camden

PROJECT:  
Primrose Hill Primary School ARP

DRG TITLE:  
Ground Floor  
Proposed Lighting Layout  
Sheet 2 of 2

SCALE: 1:50 @ A1	STATUS: D2 - Tender	PROJECT: 5557.00	ORIGINATOR: JSH
ZONE: XX	LEVEL: 00	TYPE: DR	DRG No. REV E-0202 P01



Ref: "A" - College LED4200-840 HF L1500



Ref: "B" - Cetus LED 2000 HF 830



Ref: "C" - Voyager Solid L MS E3D-S WH



Ref: "Z" - I LumoS Luxury White Glass Panel LED Dimmer