

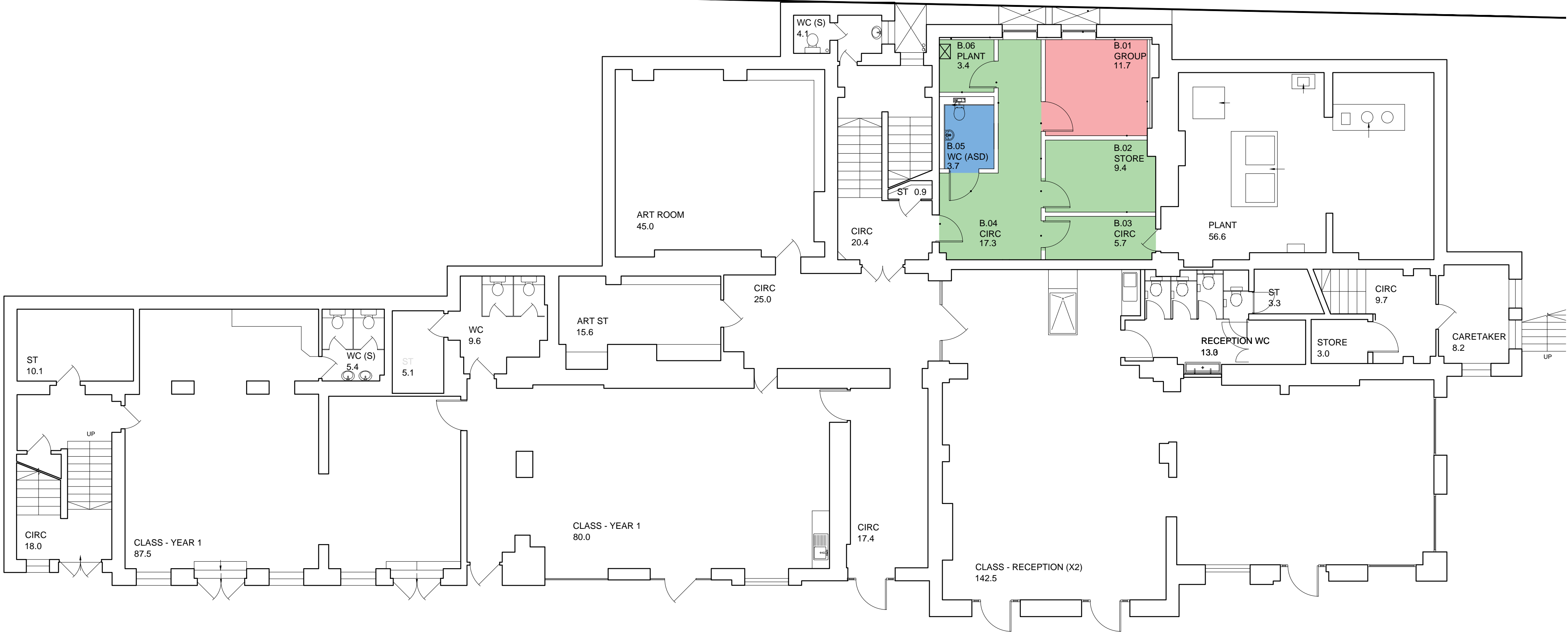
Rev.	Date	By:	Chk:	Appr:	Description:
P1	26.02.19	KR	KM	DG	First issue
P2	12.04.19	NW	KM	DG	Draft tender
T1	07.05.19	NW	KM	DG	Tender Issue

General Notes

This drawing should be read in conjunction with all relevant GA drawings, specification and detail drawings.

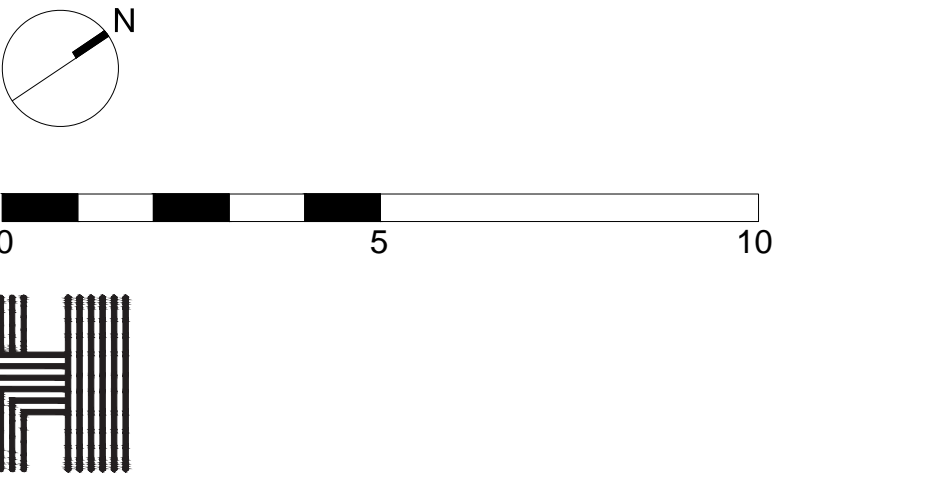
Floor gullies and drains not shown refer to detail room layout drawings for details.

Allow for threshold strips at change in flooring as M50/740



Floor Finishes Legend

- M50/130** Carpet Tiles
Including covered skirting
- M50/151** R9 Linoleum
Including covered skirting
- M50/152** R10 Linoleum
Including covered skirting
- M50/153** R10 Wet Room Vinyl
Including covered skirting
- M42/110A** Existing Parquet
Including covered skirting
- Spec TBC** Transition Strip



Haverstock LLP
Studio 10, Cliff Road Studios
Cliff Road, London NW1 9AN

tel +44 (0)20 7267 7676
info@haverstock.com
www.haverstock.com

Client:
London Borough of Camden

Job Title:
Primrose Hill Primary School ARP

Drawing Title:
Proposed Floor Finishes Scope
Basement (playground level)

Job/Dwg No/Rev:	1161	1100	T1
------------------------	------	------	----

Drawn:	Checked:	APPR:	Date:
KR	KM	DG	26.02.19

Drawing status: Tender
Do not scale from this drawing. Check all dimensions on site before ordering.

Scale(s):
1:100 @ A1