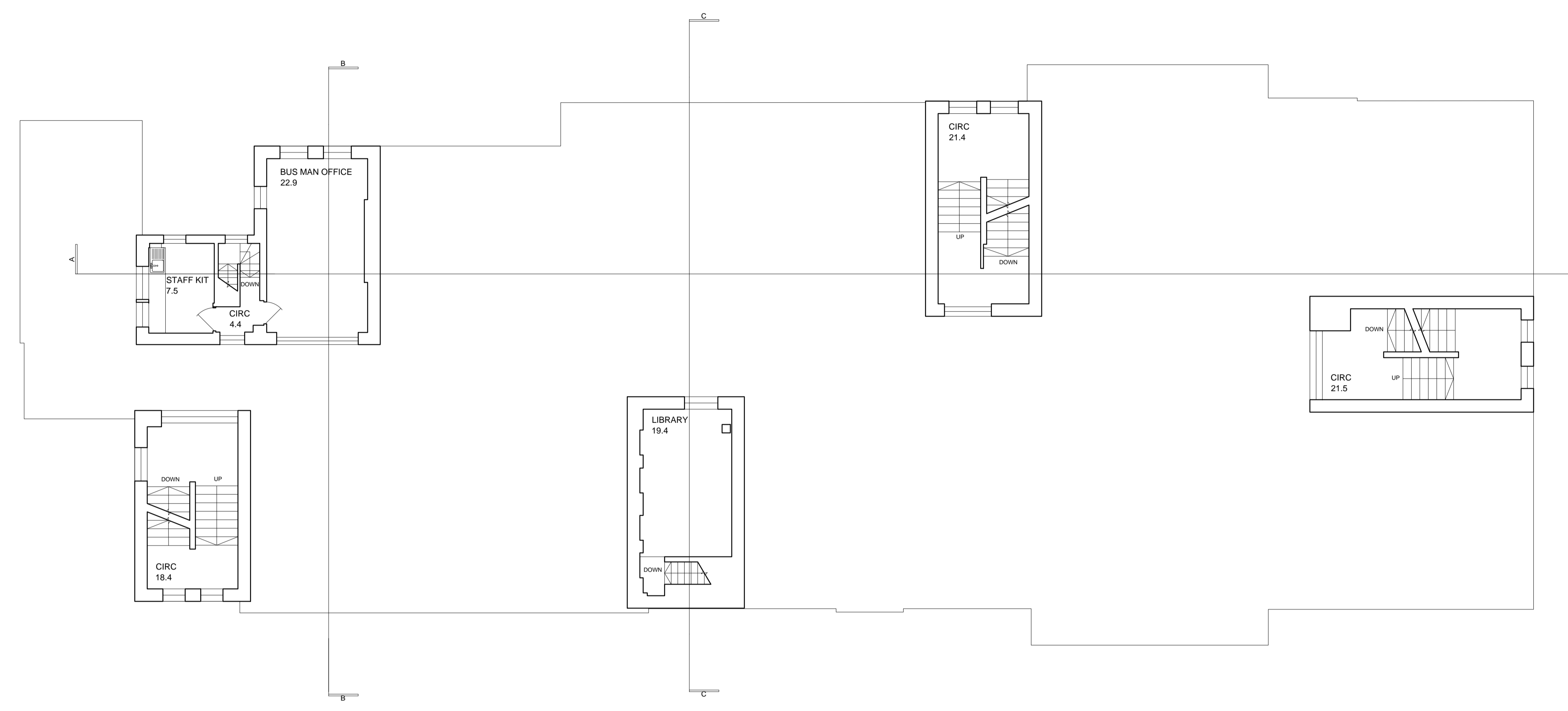


Rev.	Date	By	Chk.	Appr.	Description
P1	17.01.19	KM	KM	DG	First issue
P2	12.04.19	NW	KM	DG	Draft tender
T1	07.05.19	NW	KM	DG	Tender Issue

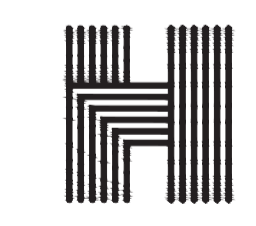
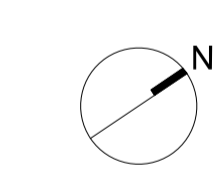
**General Notes**

Based on plan provided by LBC as part of feasibility study.  
Detailed survey plans of existing required.



**Key**

-  Circulation
-  Classrooms
-  Learning resource
-  Staff
-  Hall / dining
-  Store
-  Plant / kitchen
-  Sanitary



**Haverstock LLP** tel +44 (0)20 7267 7676  
 Studio 10, Cliff Road Studios info@haverstock.com  
 Cliff Road, London NW1 9AN www.haverstock.com

**Client:**  
London Borough of Camden

**Job Title:**  
Primrose Hill Primary School ARP

**Drawing Title:**  
Proposed Plan - Ground Mezzanine

Job / Dwg No / Rev.	1161	1012	T1
<b>Drawn:</b>	KM	KM	DG
<b>Checked:</b>	KM	DG	
<b>APPR:</b>			
<b>Date:</b>			17.01.2018

**Drawing status:** Tender  
Do not scale from this drawing. Check all dimensions on site before ordering. **Scale:** 1:100 @ A1