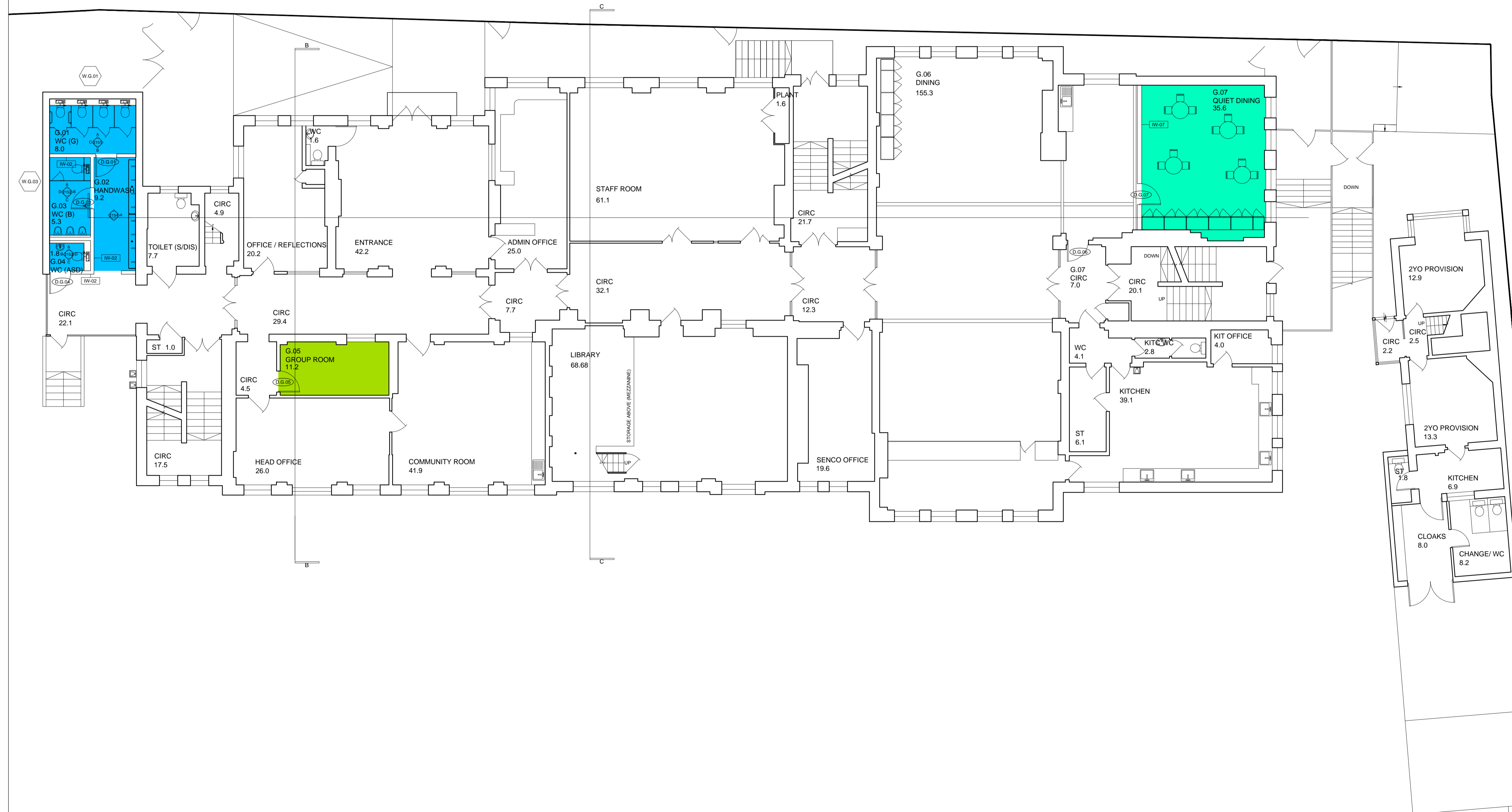


Rev:	Date:	By:	Chk:	Appr:	Description:
P1	17.01.19	KM	KM	DG	First issue
P2	06.02.19	KM	KM	DG	General updates as clouded
P3	26.02.19	KR	KM	DG	Folding screen omitted, replaced with full height partition
P4	12.04.19	NW	KM	DG	Draft tender
T1	07.05.19	NW	KM	DG	Tender Issue

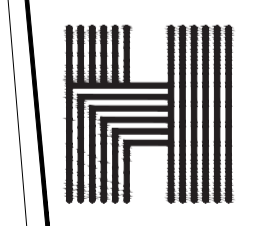
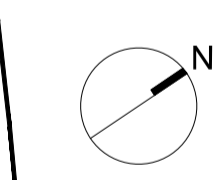
**General Notes**

Based on plan provided by LBC as part of feasibility study. Detailed survey plans of existing required.



**Key**

- Circulation
- Classrooms
- Learning resource
- Staff
- Hall / dining
- Store
- Plant / kitchen
- Sanitary



**Haverstock LLP**  
 Studio 10, Cliff Road Studios  
 Cliff Road, London NW1 9AN  
 tel +44 (0)20 7267 7676  
 info@haverstock.com  
 www.haverstock.com

**Client:**  
 London Borough of Camden

**Job Title:**  
 Primrose Hill Primary School ARP

**Drawing Title:**  
 Proposed Plan - Ground (street level)

Job/Dwg No/Rev:	1161	1011	T1
Drawn:	Checked:	APPR:	Date:
KM	KM	DG	17.01.2018

**Drawing status:** Tender  
 Do not scale from this drawing. Check all dimensions on site before ordering.  
**Scale:**  
 1:100@A1