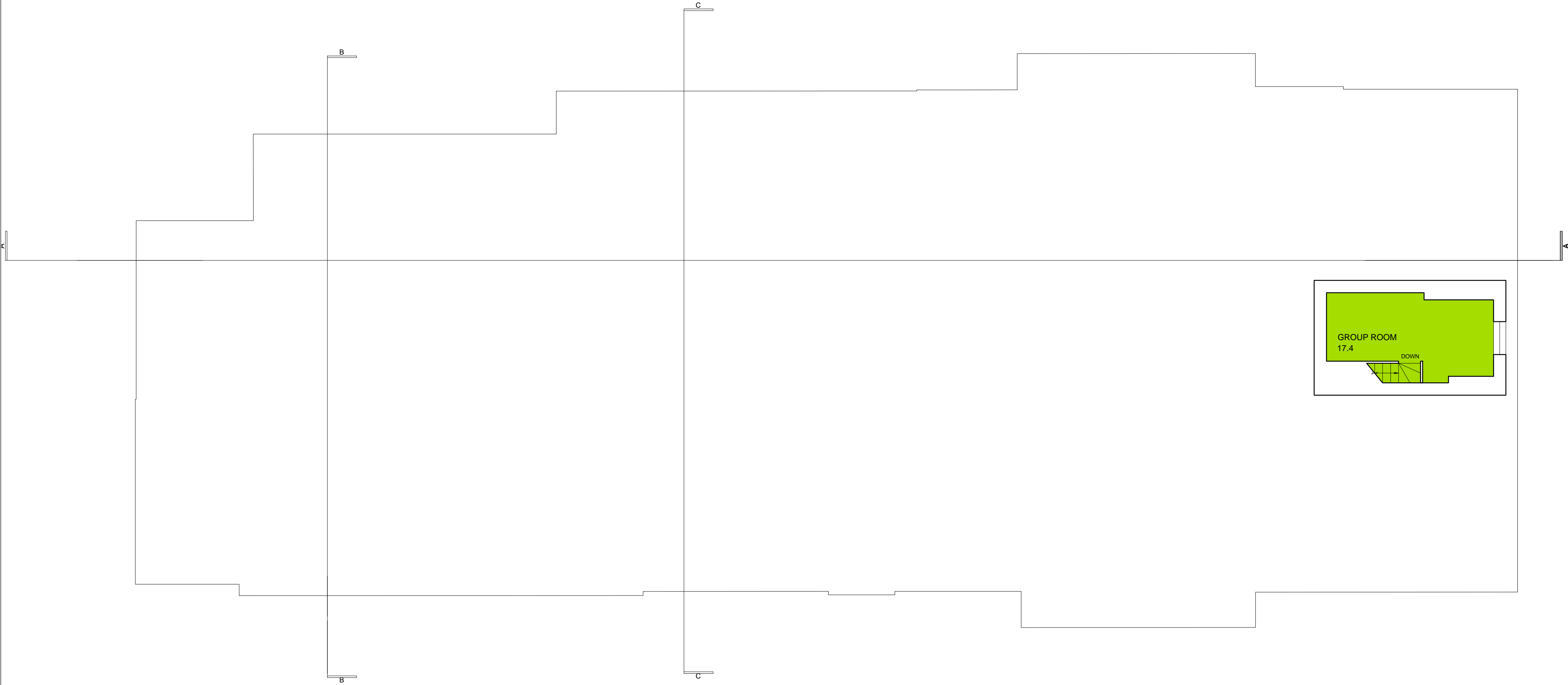


| Rev: | Date: | By: | Chk: | Appr: | Description: |
|------|----------|-----|------|-------|--------------|
| P1 | 17.01.19 | KM | KM | DG | First issue |
| P2 | 12.04.19 | NW | KM | DG | Draft tender |
| T1 | 07.05.19 | NW | KM | DG | Tender Issue |
| | | | | | |
| | | | | | |

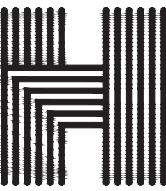
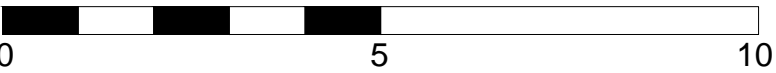
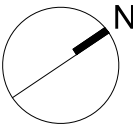
General Notes

Based on plan provided by LBC as part of feasibility study.
Detailed survey plans of existing required.



Key

- Circulation
- Classrooms
- Learning resource
- Staff
- Hall / dining
- Store
- Plant / kitchen
- Sanitary



Haverstock LLP
Studio 10, Cliff Road Studios
Cliff Road, London NW1 9AN

tel +44 (0)20 7267 7676
info@haverstock.com
www.haverstock.com

Client:
London Borough of Camden

Job Title:
Primrose Hill Primary School ARP

Drawing Title:
Existing Plan - Second Mezz

| Job / Dwg No / Rev: | 1161 | 1009 | T1 |
|---------------------|----------|-------|------------|
| Drawn: | Checked: | APPR: | Date: |
| KM | KM | DG | 17.01.2018 |

Drawing status: Tender
Do not scale from this drawing. Check all dimensions on site before ordering.

Scale:
1:100 @ A1