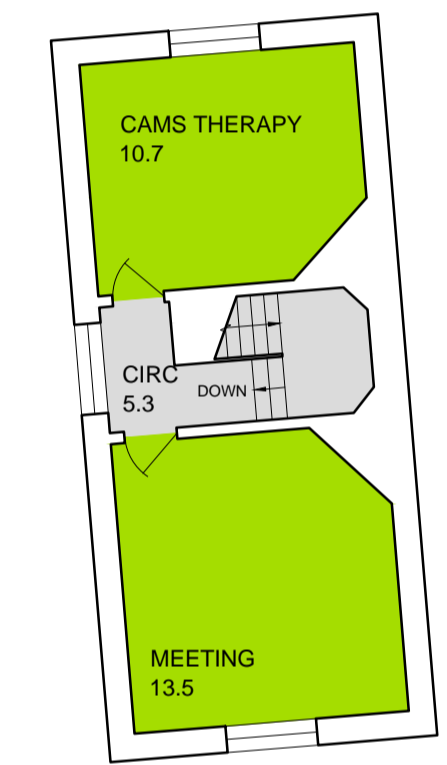


Rev.	Date	By	Chk	Appr	Description
P1	17.01.19	KM	KM	DG	First issue
P2	12.04.19	NW	KM	DG	Draft tender
T1	07.05.19	NW	KM	DG	Tender Issue

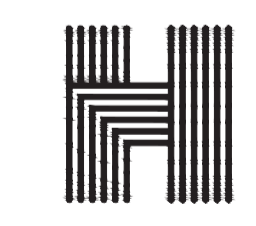
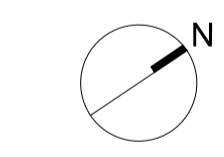
General Notes

Based on plan provided by LBC as part of feasibility study.
Detailed survey plans of existing required.



Key

- Circulation
- Classrooms
- Learning resource
- Staff
- Hall / dining
- Store
- Plant / kitchen
- Sanitary



Haverstock LLP tel +44 (0)20 7267 7676
Studio 10, Cliff Road Studios info@haverstock.com
Cliff Road, London NW1 9AN www.haverstock.com

Client:
London Borough of Camden

Job Title:
Primrose Hill Primary School ARP

Drawing Title:
Existing Plan - Second

Job/Dwg No/Rev.	1161	1008	T1
Drawn:	Checked:	APPR:	Date:
P2	KM	DG	17.01.2018

Drawing status: Tender
Do not scale from this drawing. Check all dimensions on site before ordering. **Scale:** 1:100@A1