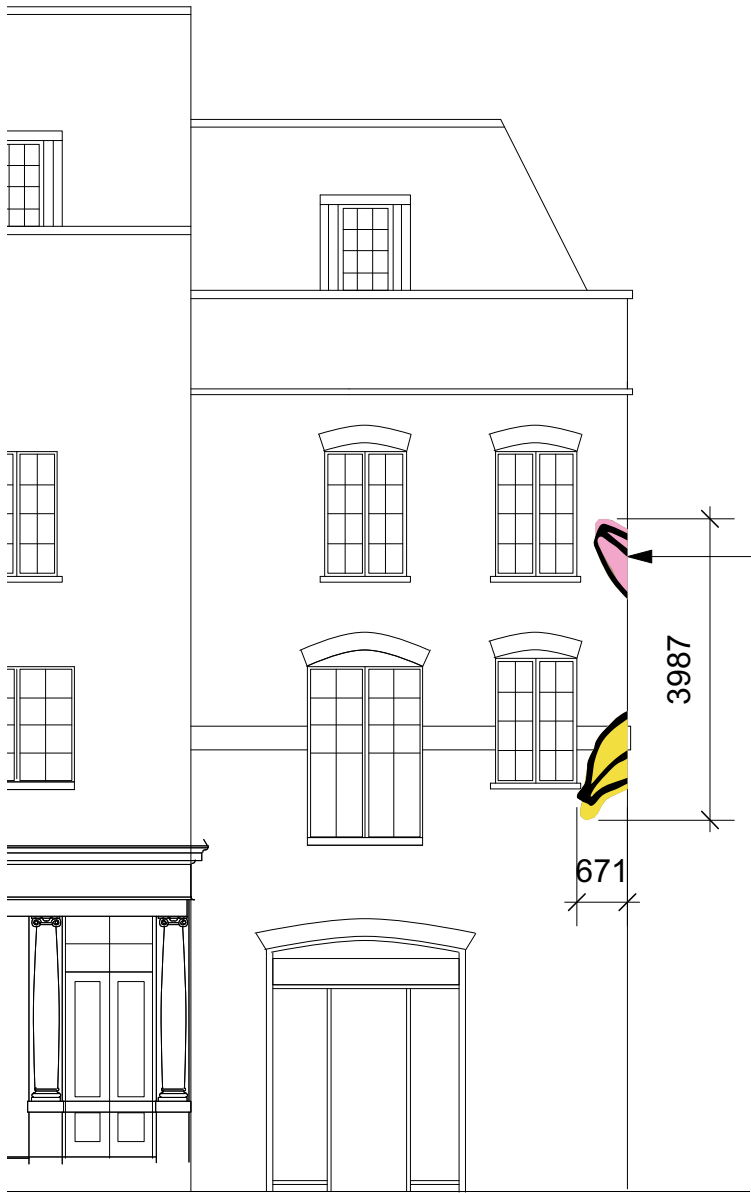
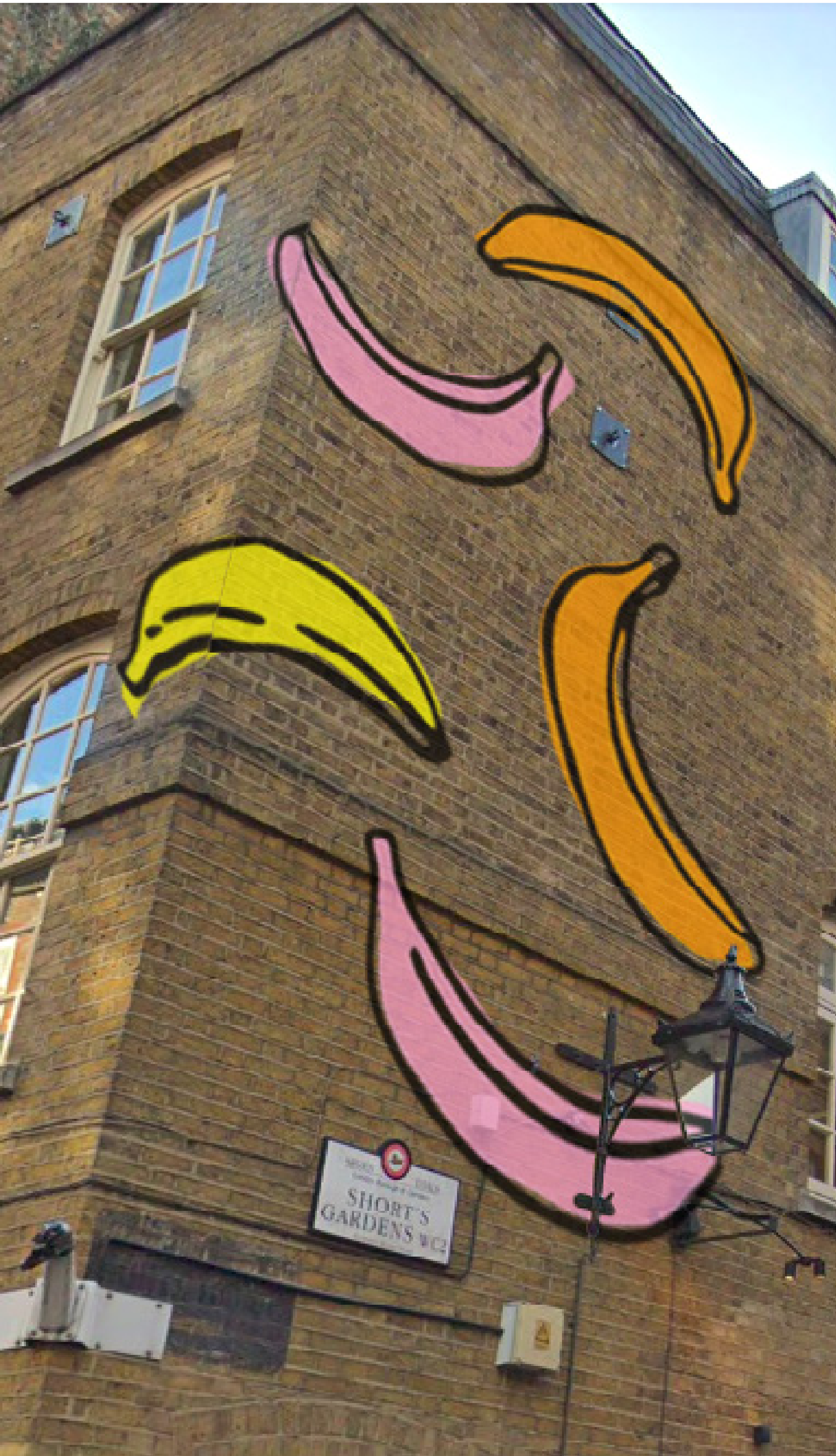




NEAL STREET ELEVATION / EXISTING
ST-[12]-200 Scale: 1:100

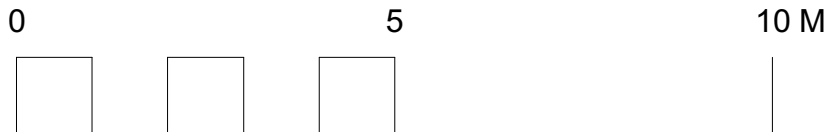


1 NEAL STREET ELEVATION / PROPOSED
ST-[12]-200 Scale: 1:100

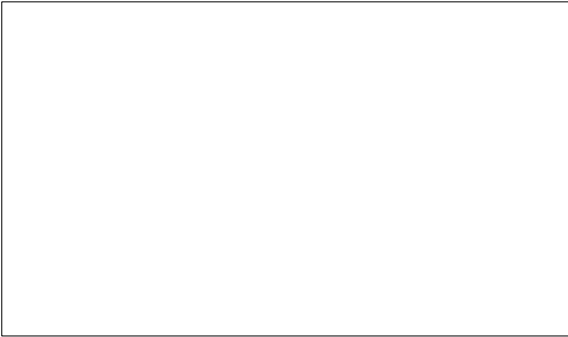


GENERAL NOTES:
Do not scale from this drawing.
Check drawing on receipt and immediately report any discrepancies to the Architect.
Verify all dimensions and levels on site prior to construction.
The contents of this drawing are Stiff + Trevillion Architects Ltd copyright and shall not be re-used without their written permission.

Revisions			Approved
Rev.	Date	Note	



Key Plan



Stiff + Trevillion

Stiff + Trevillion Architects Ltd
16 Woodfield Road
London W9 2BE

T +44(0)20 8960 5550
mail@stiffandtrevillion.com
www.stiffandtrevillion.com

Client
KERB
SEVEN DIALS MARKET

Project No. 4256
Project THOMAS NEAL'S WAREHOUSE
35 EARLAM STREET WC2H 9LD

Drawing Title
NEAL STREET
ELEVATION

Drawing Status
PLANNING

Date
26.04.19

Scale @ A1
1:100

Scale @ A3
1:XXX

Drawing No.
ST-[12]-200

Revision
-