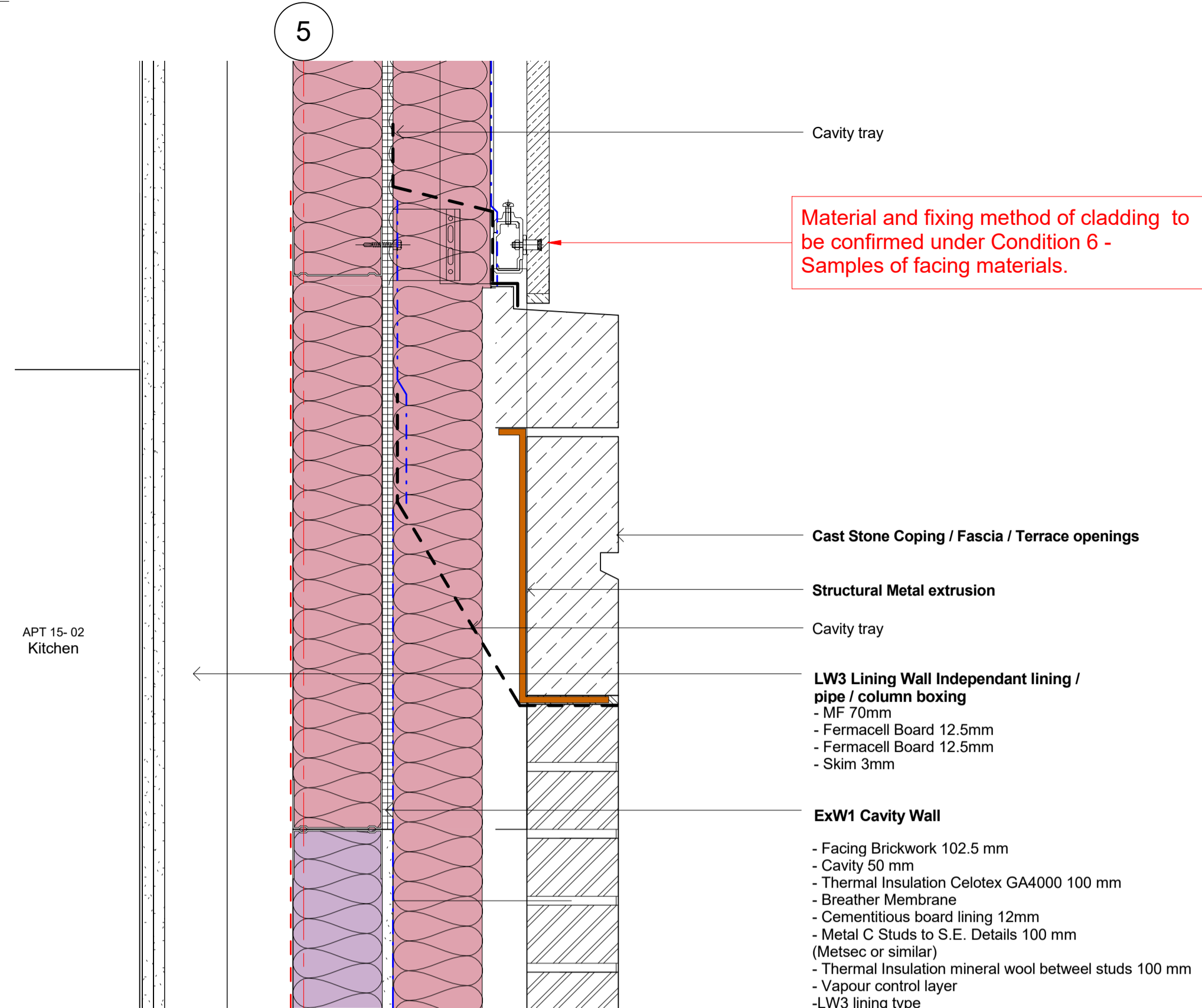
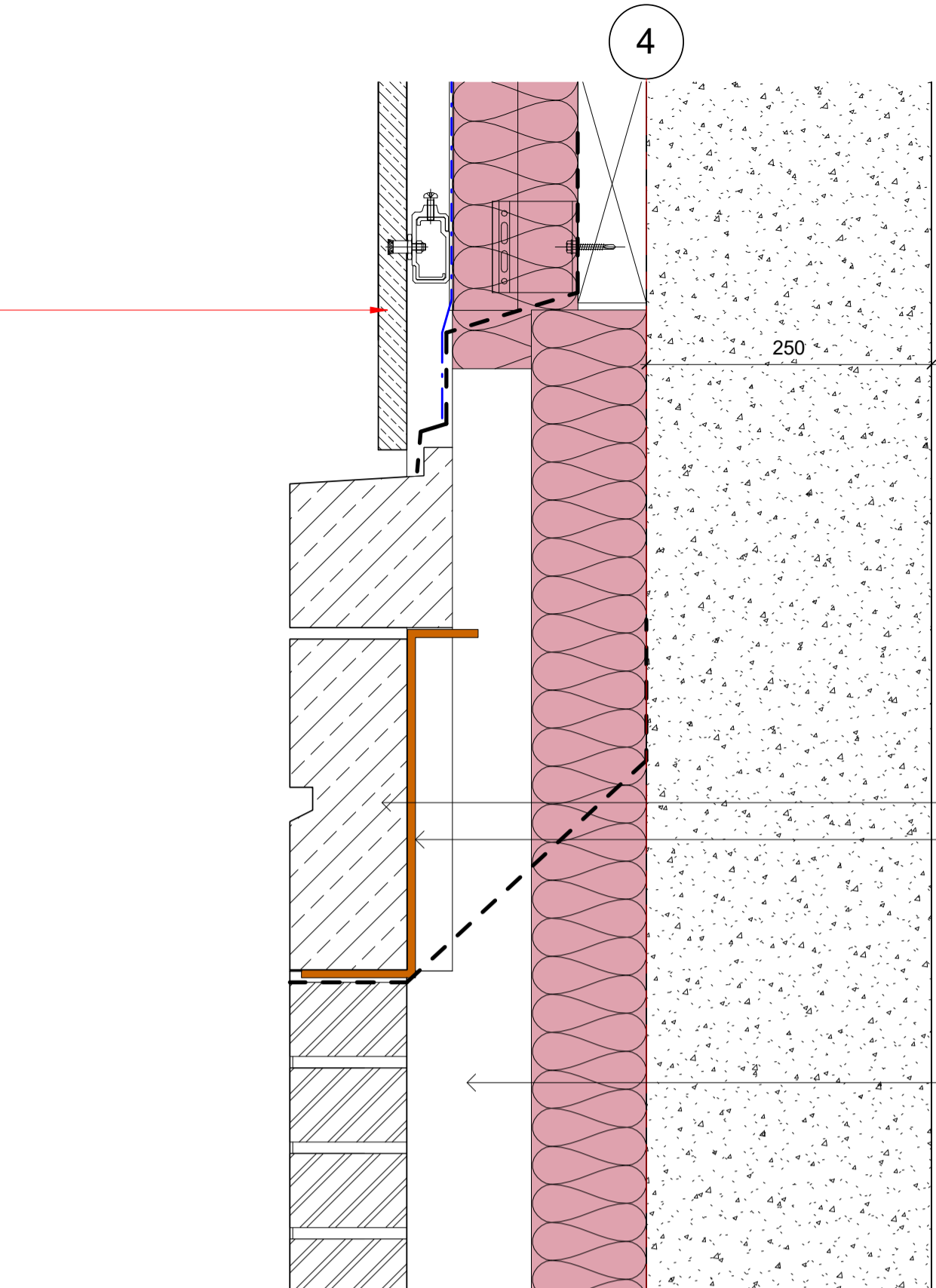


General notes:
 This drawing is copyright of KSR architects. This drawing must be read in conjunction with the Designer's Risk Assessment, specification and all other relevant documentation and drawings. KSR architects accept no liability for any expense, loss or damage of whatsoever nature and however arising from any variation made to this drawing or in the execution of the work to which it relates which has not been referred to them and their approval obtained.
 Do not scale from this drawing or the digital data, only figured dimensions are to be used. For Planning refer to linear scale. Check all dimensions on site prior to carrying out any works - advise of any discrepancy.

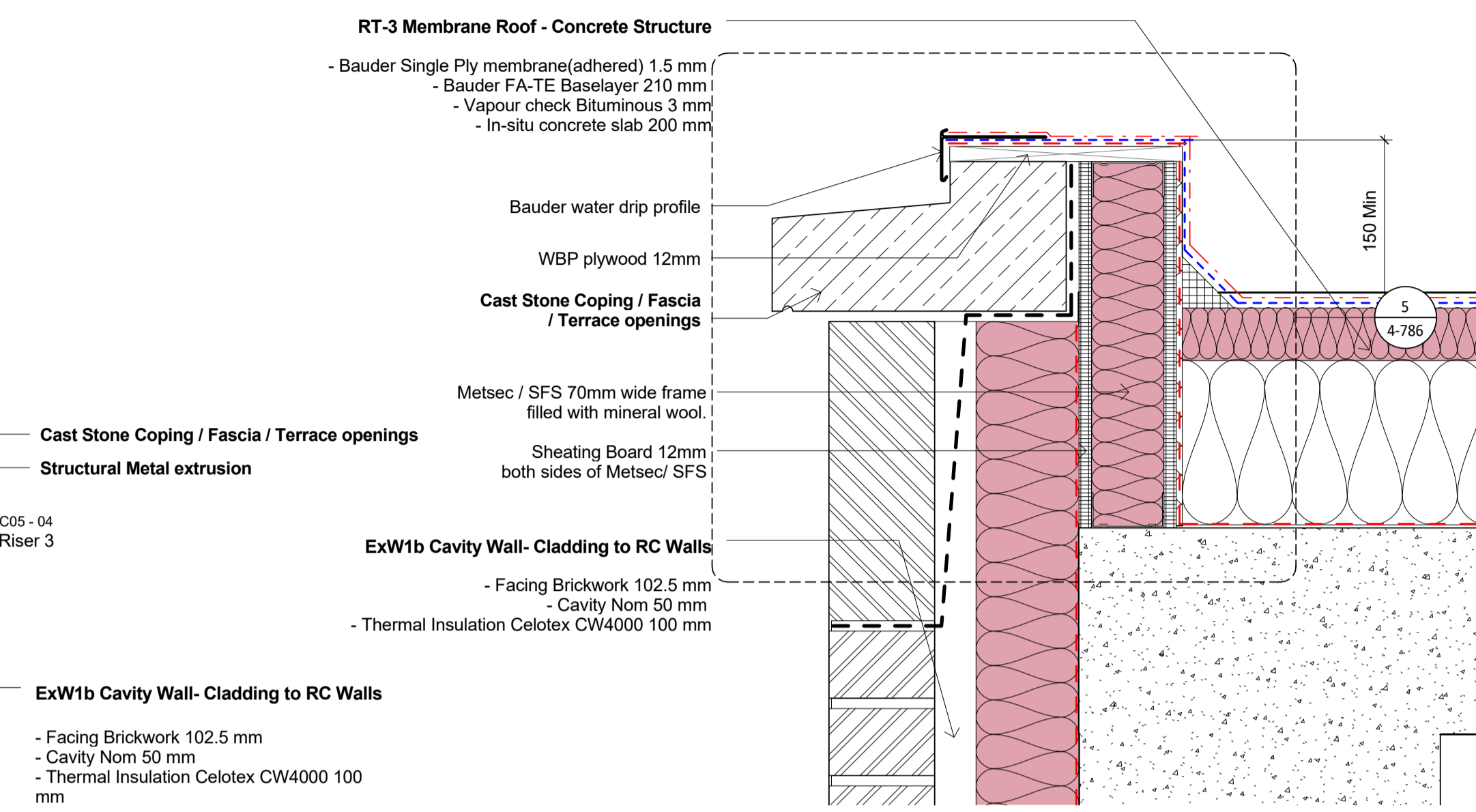
Notes/Legends



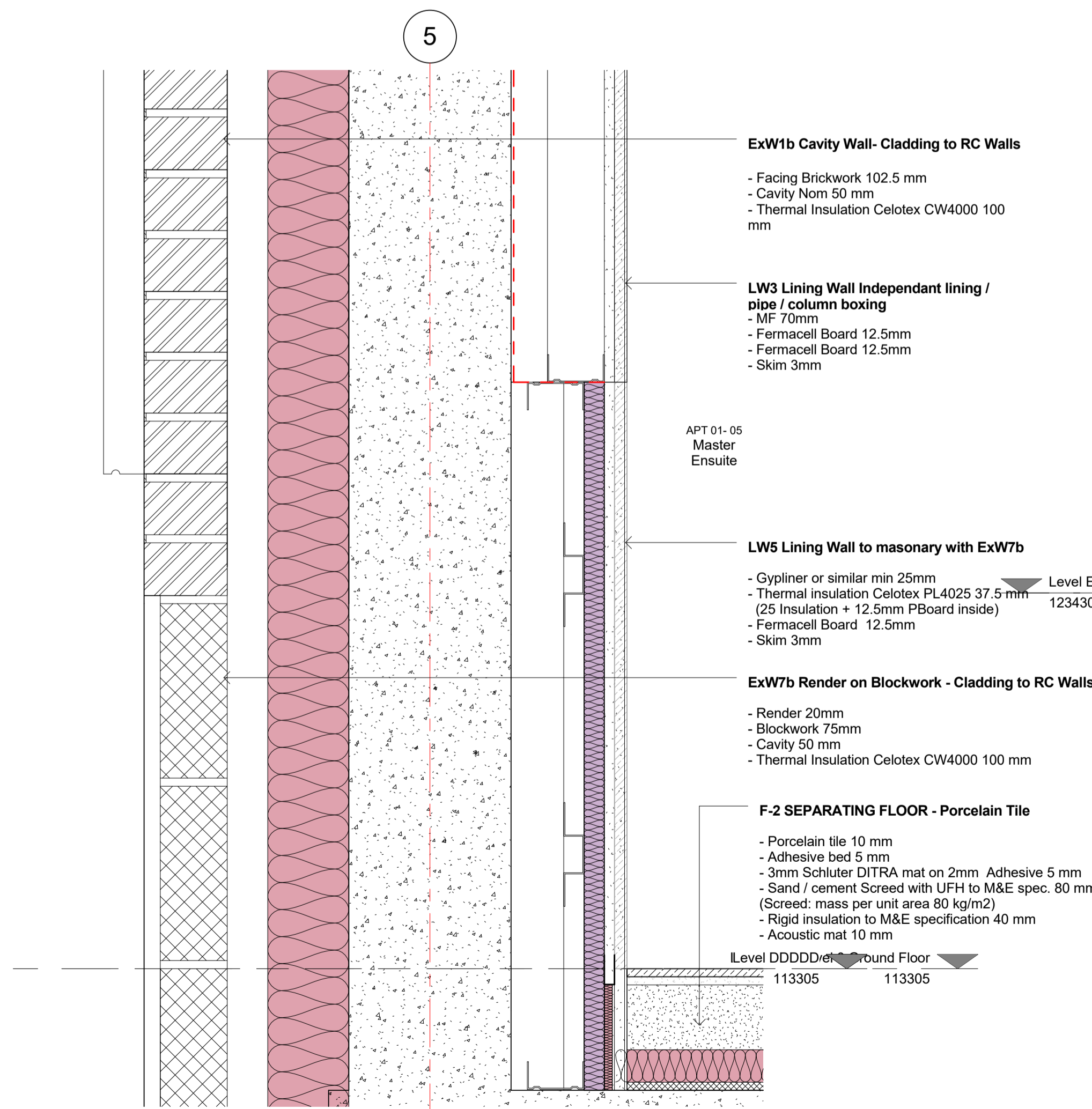
1 Brick - Stone - Slate Detail 1
 1 : 5



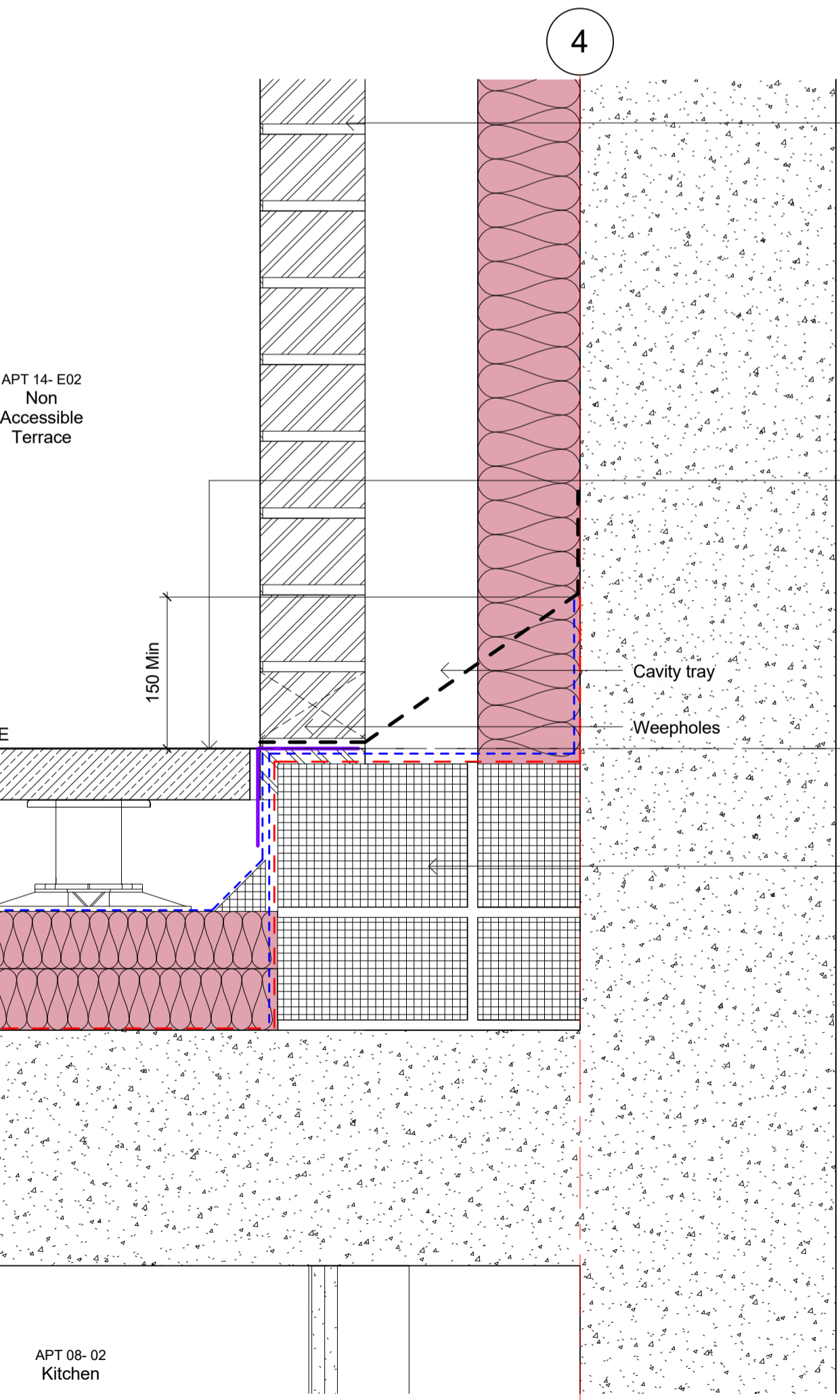
2 Brick - Stone - Slate Detail 2
 1 : 5



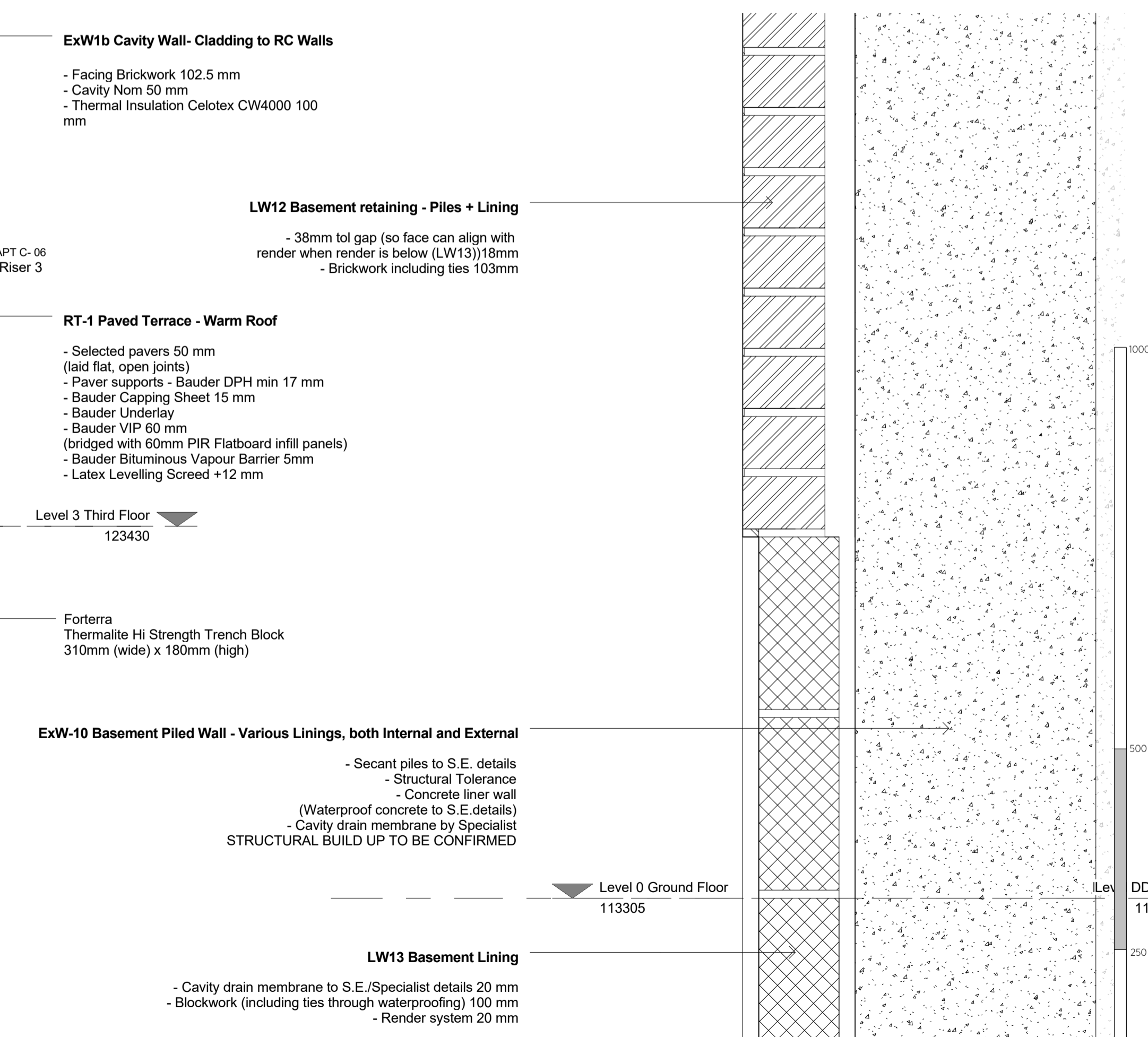
3 Brick - Stone - Lifshaft Head
 1 : 5



4 Brick - Render Detail 1
 1 : 5



5 Brick - Terrace Detail
 1 : 5



6 Brick - Render Detail 2
 1 : 5

C	Rolling and coping details revised	30 Apr 19	BS
B	Planning conditions	28 Feb 19	SAS
A	Final Planning Details Sign-off	09 Jan 19	SE
Rev	Description	Date	Chkd
© KSR architects			
Stamp: Planning			
Key Plan			
Project: 29 NEW END			
Title: Brickwork Details			
Date:	12/2018	Drawn By:	Author
Scale:	1:5 @ A1	Status:	Planning
Project Ref:	NEN	Drawing No:	NEN - PL-4-616
		Revision:	C

