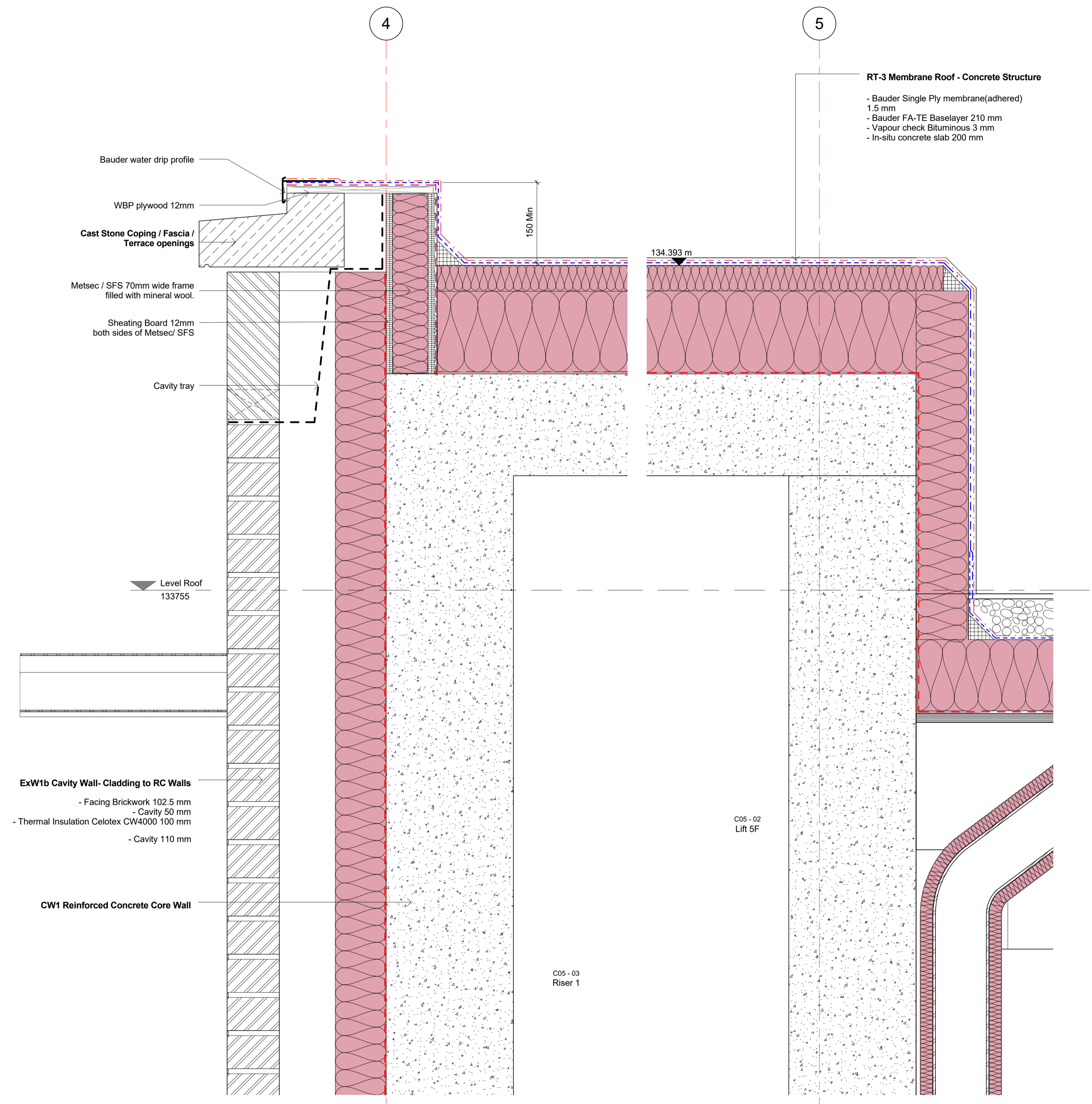
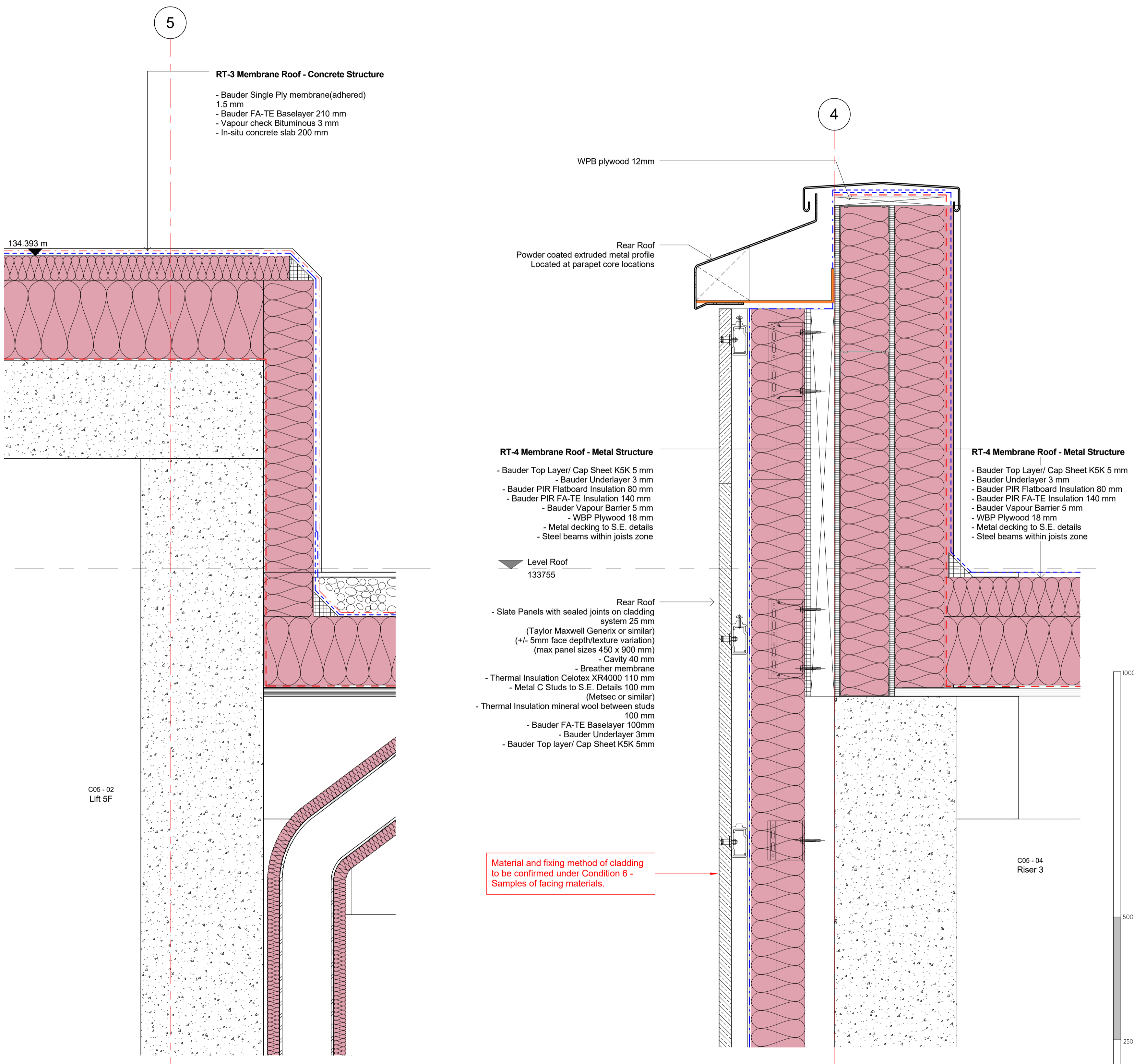


General notes:
 This drawing is copyright of KSR architects. This drawing must be read in conjunction with the Designer's Risk Assessment, specification and all other relevant documentation and drawings. KSR architects accept no liability for any expense, loss or damage of whatsoever nature and however arising from any variation made to this drawing or in the execution of the work to which it relates which has not been referred to them and their approval obtained.
 Do not scale from this drawing or the digital data, only figured dimensions are to be used. For Planning refer to linear scale. Check all dimensions on site prior to carrying out any works - advise of any discrepancy.

Notes/Legends

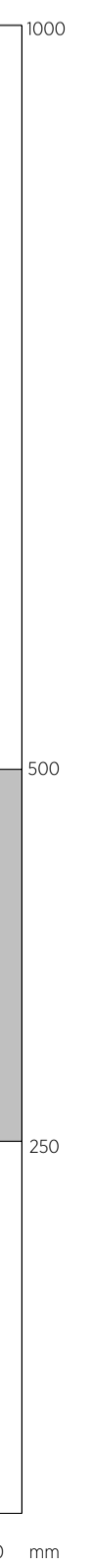


1 PARAPET - LIFT OVERRUN - DRAINAGE DETAIL
 1 : 5



2 FACADE DETAIL
 1 : 5

Material and fixing method of cladding to be confirmed under Condition 6 - Samples of facing materials.



C	Rolling and coping details revised	30 Apr 19	BS
B	Planning conditions	28 Feb 19	SAS
A	Draft Planning Details Sign-off	09 Jan 19	E
Rev	Description	Date	Check
© KSR architects			
Stamp: Planning			
Key Plan			
KSRARCHITECTS KSR Architects LLP 14 Greenland Street London NW10 0ND Email: info@ksrarchitects.com Tel: +44 (0)20 7692 5000 Website: www.ksrarchitects.com			
Project: 29 NEW END			
Title: Typical Roof Details 1			
Date:	12/2018	Drawn By:	Author
Scale:	1:5 @ A1	1:50 @ A1	Status: Planning
Project Ref:	NEN	Drawing No:	NEN - PL-4-310.1
		Checked:	C